

Arrangements for Inbound Persons



Rapid Antigen Test (RAT)*



PCR-based nucleic acid test*

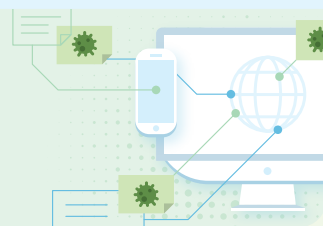
<p>Prior to the scheduled time of departure (for arrivals via the airport) or Before arrival at Hong Kong (for arrivals via other boundary control points)</p>	From the Mainland or Macao:		
	—	—	—
	From Taiwan or places outside China:		
	<p>Conducted within 24 hours with a negative result</p>	<p>OR</p> <p>Conducted within 48 hours with a negative result</p>	<ul style="list-style-type: none"> Must keep the photo showing the RAT result or the PCR test report for 90 days May voluntarily declare the test result via the electronic Health Declaration Form
<p>After arriving at Hong Kong</p>		<p>—</p>	<ul style="list-style-type: none"> The Government recommends all inbound persons to conduct daily RATs using self-arranged rapid antigen test (RAT) kits during the period between the day of arrival (i.e. Day 0) and Day 5 after arrival at Hong Kong May voluntarily report their RAT results and health status via the eCMSS



2019 冠狀病毒病電子醫學監察系統
Electronic COVID-19 Medical Surveillance System (eCMSS)



<https://chp.gov.hk/ecmss>



* except those aged three and below

Centre for Health Protection Hotline : 183 0111 (9 am to 8 pm)

For detailed inbound control measures and other details, you should also refer to the [latest press releases](#), relevant information on the [webpage](#) and [FAQs](#)

Version date: 6 February 2023



更多防疫資訊
For more information on fighting the virus:
www.coronavirus.gov.hk



衛生防護中心Facebook專頁
Centre for Health Protection Facebook Fanpage
fb.com/CentreforHealthProtection



衛生署
Department of Health

衛生署健康教育專線
Health Education Infoline of the Department of Health **2833 0111**