

Directorate General of Customs and Excise (DGCE) - Republic of Indonesia

23 April 2020

DGCE's National Measures in Response to COVID-19 Outbreak

Actions taken by Directorate General of Customs and Excise of Republic of Indonesia (DGCE) in response to the COVID-19 outbreak are as follows:

1. Special policy related to import and export

- a. Ministry of Finance Regulation No. PMK-34/PMK.04/2020 regarding Customs and/or Excise as well as taxation facilities on imported goods used to countermeasure COVID-19.
 - Importation of goods originating from abroad, Bonded Logistic Center (PLB), Bonded Zone/Warehouses, Free Trade Zone/ Special Economic Zones, KITE Facility Receiving Company, used for COVID-19 countermeasure (73 items) for both commercial and non-commercial purposes may be granted the following facilities:
 - exemption on import duties and excise
 - non-imposition of PPN (VAT) and/or PPnBM (Sales Tax on Luxury Goods)
 - exemption of PPh Article 22 (import income tax)
 - These facilities may be given to:
 - Central Government
 - Regional Government
 - Individual
 - Legal entity
 - Non-legal entity
 - Importation of consigned goods and passenger goods will be granted exemption facilities. Requirements:
 - For goods worth less than USD 500 (FOB) no need to submit application for exemption facilities, document used: Consignment Note (consigned goods) and Customs Declaration (passenger goods)
 - For goods worth more than USD 500 (FOB), the importer shall submit application for exemption facilities to the Ministry of Finance through Head of Customs Office.
 - All submission of import applications that are granted exemption facilities can be done through Lembaga National Single Window (LNSW) portal. <https://insw.go.id>
 - Exception on import prohibition/restriction requirements may be given if the imported goods do not exceed the amount set by the ministry / agency and / or National Board of Disaster Relief (BNPB). Otherwise, the importer shall apply for recommendation from BNPB through LNSW.
- b. Exemption of Excise for Ethyl Alcohol used for social purposes and raw / supporting materials to produce non-excisable final product.

In the context of prevention and control of COVID-19 outbreak, exemption of excise duties for ethyl alcohol shall be given to manufacturers or storage companies based

on orders from government agencies or non-governmental organizations related to Covid-19 countermeasures.

- c. Monitoring of temporary restrictions on exports of antiseptics, raw materials for masks, personal protective equipment (PPE) and masks. According to Minister of Trade Regulation No. 23 of 2020, exporters are prohibited from exporting antiseptics, mask raw materials, personal protective equipment and masks until 30 June 2020. This regulation was issued because the government needs to maintain the availability of these goods for health services and the self-protection of Indonesian people during the COVID-19 outbreak.

2. Cooperation with other government agencies

- a. The government relaxed various import and export restrictions (Lartas), especially for reputable traders (companies with high level compliance). Reduction of import restrictions is aimed to accelerate imports of raw and semi-finished materials for local manufactures. On the other hand, the government hopes to increase exports and competitiveness by reducing export restrictions. In order to support this policy, DGCE has submitted import realization report to related ministries and agencies, as well as shared data on reputable traders to Ministry of Trade.
- b. Strengthen cooperation and synergy with other government agencies including National Single Window Agency, Ministry of Health, National Agency of Drug and Food Control (Badan POM), and National Board of Disaster Relief (BNPB) through optimization of National Single Window Agency (LNSW) platform. Starting March 30, application of BNPB recommendation to obtain trade facilities in the context of COVID-19 countermeasures can be done through LNSW.
- c. Development of National Logistics Ecosystem (NLE). NLE is a platform that facilitates collaboration of information systems between government and private sector to simplify and synchronize the flow of information and documents in export / import activities at ports, as well as domestics trade through data sharing, simplification business process, elimination of repetition and duplication.

3. Working Policies for Officers

- a. To prevent and reduce the spread of COVID-19 and provide protection to the health and safety of officials / officers of DGCE, officials / officers required to:
 - avoid physical contact (for example shaking hands);
 - avoid public places / crowds / public spaces if there are no urgent interests; and
 - postpone / cancel meetings or events that mobilize or gather a large number of officers at one location simultaneously, such as workshops, seminar, conference, etc.
- b. For most officers, especially those working for back office or administration, a work from home policy has been adopted. Meanwhile, for service offices such as international ports and airports, we have implemented a work shift system and reduced the number of front-line officer. We also provide adequate personal protection equipment such as masks and gloves for front-line officer.
- c. Officers shall submit their work progress periodically to their superiors. If a meeting is needed, it will be done virtually using Zoom, Skype or other virtual meeting application.



DIRECTORATE GENERAL OF
CUSTOMS AND EXCISE (DJBC)



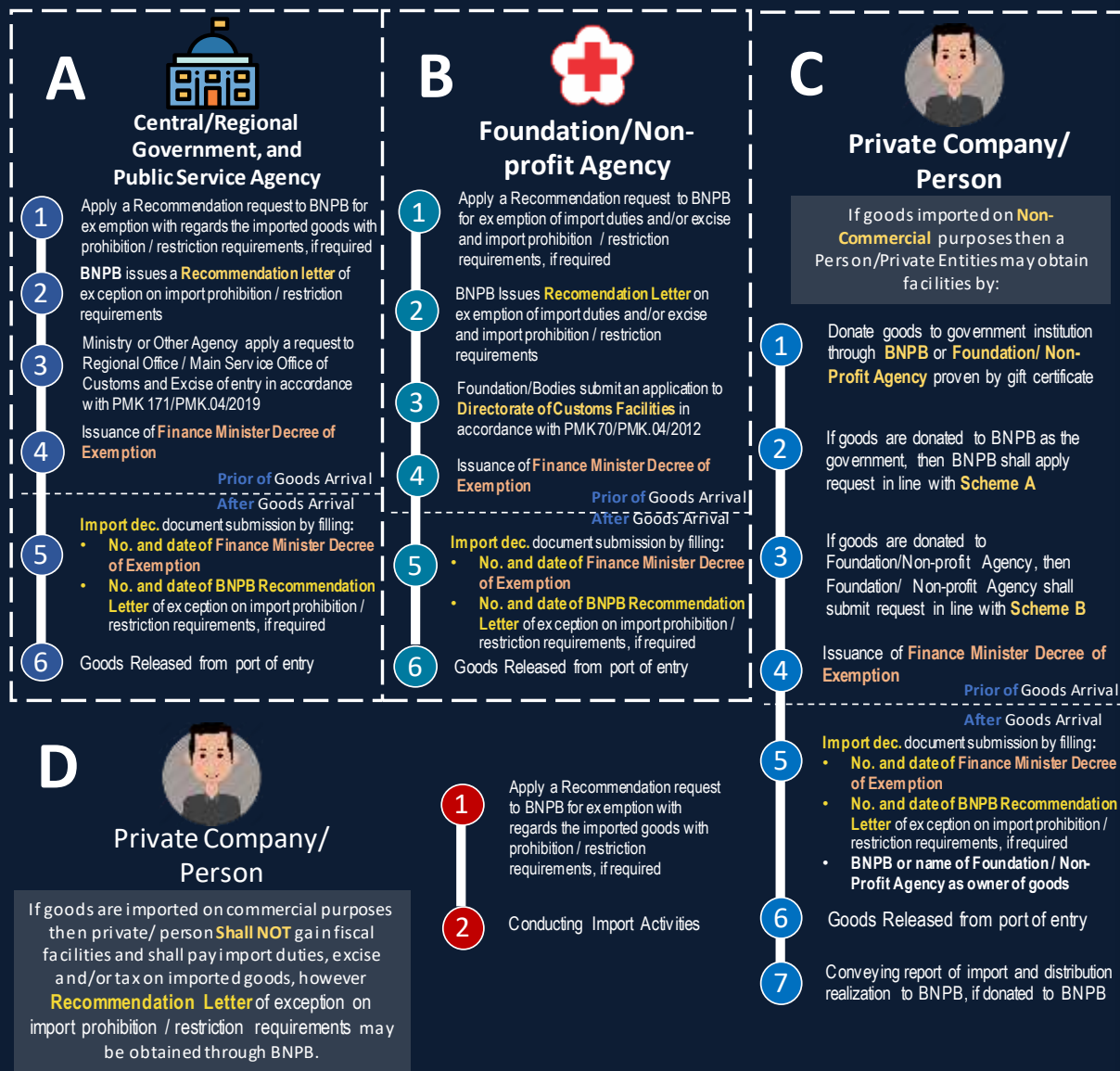
NATIONAL BOARD FOR
DISASTER RELIEF (BNPB)

SERVICE ACCELERATION IMPORT GOODS FOR COVID- 19 COUNTER MEASURES

FACILITIES PROVIDED

- Exemption on import duties and excise
- Unimposition of PPN and/or PPnBM
- Uncollected of PPh Import Article 22
- Exception on Import Prohibition / Restriction requirements

Who and how can a Person obtain fiscal and/or non fiscal facilities??



BNPB conducts bookkeeping on donated goods from Person or Private Legal Agencies that has distributed to the society as stock and conduct Hand Over Event Report (BAST) to the beneficiary to nullify stock accounts from balance sheet

ALUR PROSES PENGAJUAN REKOMENDASI BNPB MELALUI SISTEM INSW



Dalam rangka Gugus Tugas Percepatan Penanggulangan virus COVID-19 di Indonesia, **KINI Pengajuan Rekomendasi BNPB** dapat dilakukan secara *online* melalui Sistem INSW yang merupakan sinergi antara **LNSW, BNPB, DJBC, Kementerian Kesehatan dan Badan POM**. Alur pengajuannya adalah sebagai berikut:



Lingkup komoditi:
Hand Sanitizer, Bahan Baku Hand Sanitizer dan Produk Mengandung Desinfektan; Test Kit dan Reagent Laboratorium; Virus Transfer Media; Obat dan Vitamin; Peralatan Medis; dan Alat Pelindung Diri.
(Sumber: BTKI)

PEMOHON



Pemerintah Pusat,
Pemda, dan BLU



Yayasan/Lembaga
Non Profit



Perseorangan/Swasta
untuk Kegiatan
Non Komersial



Perseorangan/Swasta
untuk Kegiatan
Komersial

SISTEM INSW



www.insw.go.id



LNSWKemenkeu



officialinsw



Call Center
1500-679



info@insw.go.id

List of Items Granted Customs Facilities

No.	Item Categories	Tariff Code
Hand Sanitizer and Products containing disinfectants		
1	Hand Sanitizer	Ex.3004.90.30
2		Ex.3808.94.10
3		Ex.3808.94.20
4		Ex.3808.94.90
5	Disinfectant substances	3808.59.60
6	Products containing disinfectants (ready to use)	3401.11.40
7		3401.11.50
8		3401.30.00
Test Kit and laboratory reagents		
9	Rapid Test	Ex.3002.15.00
10		Ex.3822.00.10
11		Ex.3822.00.20
12	PCR Test	Ex.3822.00.90
13		9027.80.30
Virus Transfer Media		
14	Virus Transfer Media	Ex.3821.00.10
15		Ex.3821.00.90
Drugs and Vitamins		
16	Drugs dan Vitamins	Ex.2924.29.30
17		Ex.2924.29.90
18		Ex.2933.49.90
19		Ex.2933.99.90
20		Ex.2941.90.00
21		Ex.2941.90.00
22		Ex.3003.20.00
23		Ex.3003.60.00
24		Ex.3004.20.91
25		Ex.3004.20.99
26		Ex.3004.50.10
27		3004.50.21
28		3004.50.29
29		3004.50.91
30		Ex.3004.60.20
31		Ex.3004.90.51
32		Ex.3004.90.69
33		Ex.3004.90.89
Medical equipment		
34	Thermometer	9025.19.19
35	Ventilator	Ex.9019.20.00
36	Swab	Ex.3005.90.90
37		Ex.9018.90.90
38	Thermal Imaging/Scanning Equipment	Ex.9027.50.10
39	In vitro diagnostic equipment, including PCR test	Ex.9027.80.30
40		Ex.9027.80.40
41	Syringe	9018.31.10
42		9018.31.90
43	Syringe and infusion pump	Ex.9018.90.30

44	High flow oxygen	Ex.9019.20.00
45	Bronchoscopy Portable	Ex.9018.90.30
46	Power air purifying respirator	Ex.9020.00.00
47	CPAP-Mask	Ex.9019.20.00
48	CPAP Machine Pediatric	Ex.9019.20.00
49	ECMO (Extracorporeal Membrane Oxygenation)	Ex.9019.20.00
50	Breathing Circuit for Ventilator and CPAP	Ex.9019.20.00
51	Baby Incubator	Ex.9018.90.30
52	Baby Incubator transport	Ex.9018.90.30
Personal protective equipment		
53	Mask	6307.90.40
54		Ex.6307.90.90
55		9020.00.00
56	Protective clothes	Ex.6210.10.19
57		6210.10.11
58		Ex.6210.10.19
59		6210.20.30
60		6210.20.40
61		6210.30.30
62		6210.30.40
63		6210.40.20
64		6210.40.90
65		6210.50.20
66		6210.50.90
67		6211.43.10
68	Gloves	Ex.4015.11.00
69		Ex.4015.19.00
70	Foot protective gear	6406.90.91
71	Face Shield	3926.90.49
72	Protective glasses	9004.90.90
73	Head protector	6505.00.20