

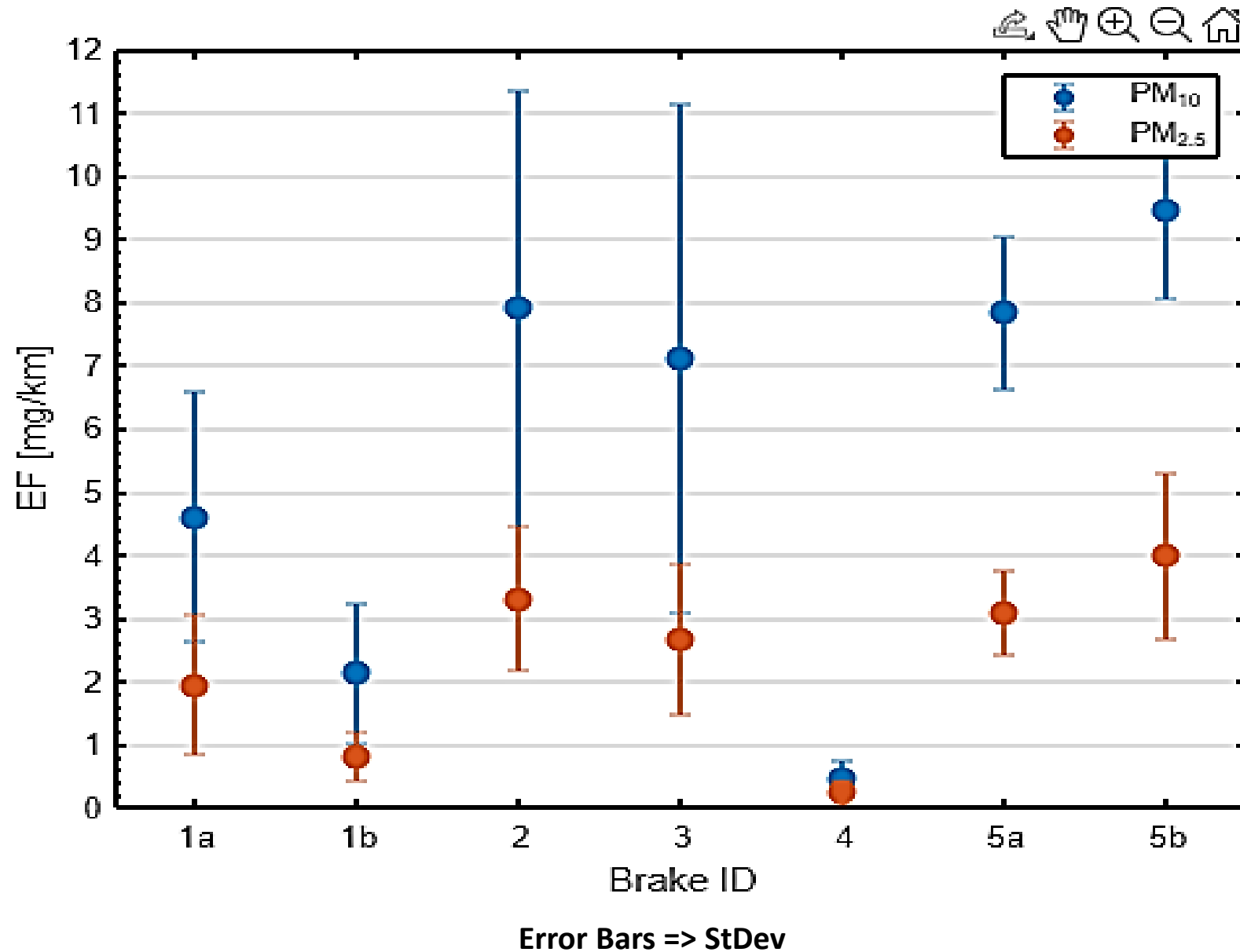
# **TASK FORCE 2 – BRAKE EMISSIONS**

## **HIGH-LEVEL RESULTS ON PM DATA FROM THE ILS**

**Marcel Mathissen and Theo Grigoratos**

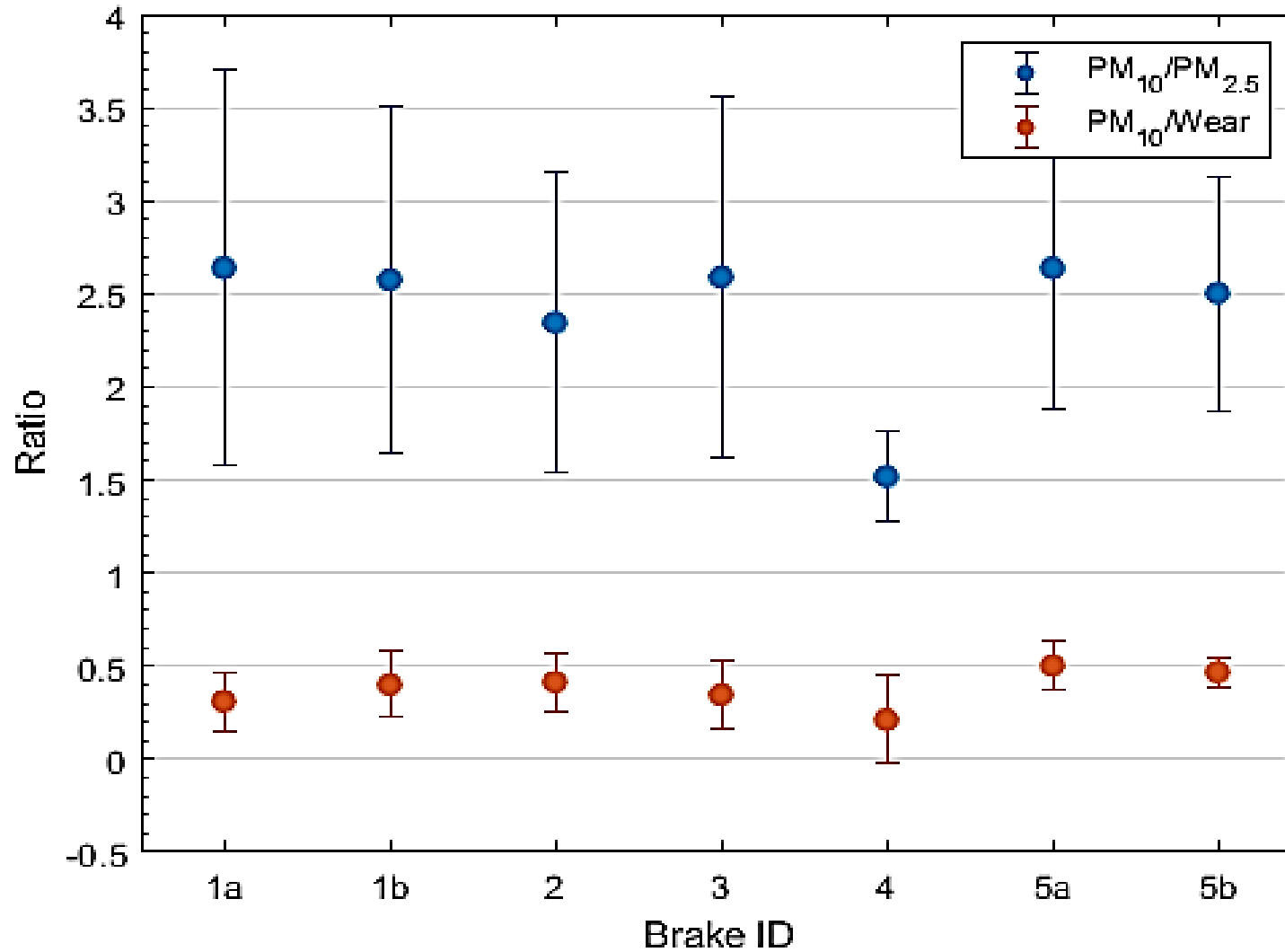


# PM DATA BRAKE LEVEL – OVERVIEW



Brake	Tests #
Br1a	16
Br1b	14
Br2	13
Br3	7
Br4	5
Br5a	4
Br5b	4

# PM DATA – PM<sub>10</sub>/PM<sub>2.5</sub> & PM<sub>10</sub>/WEAR RATIO

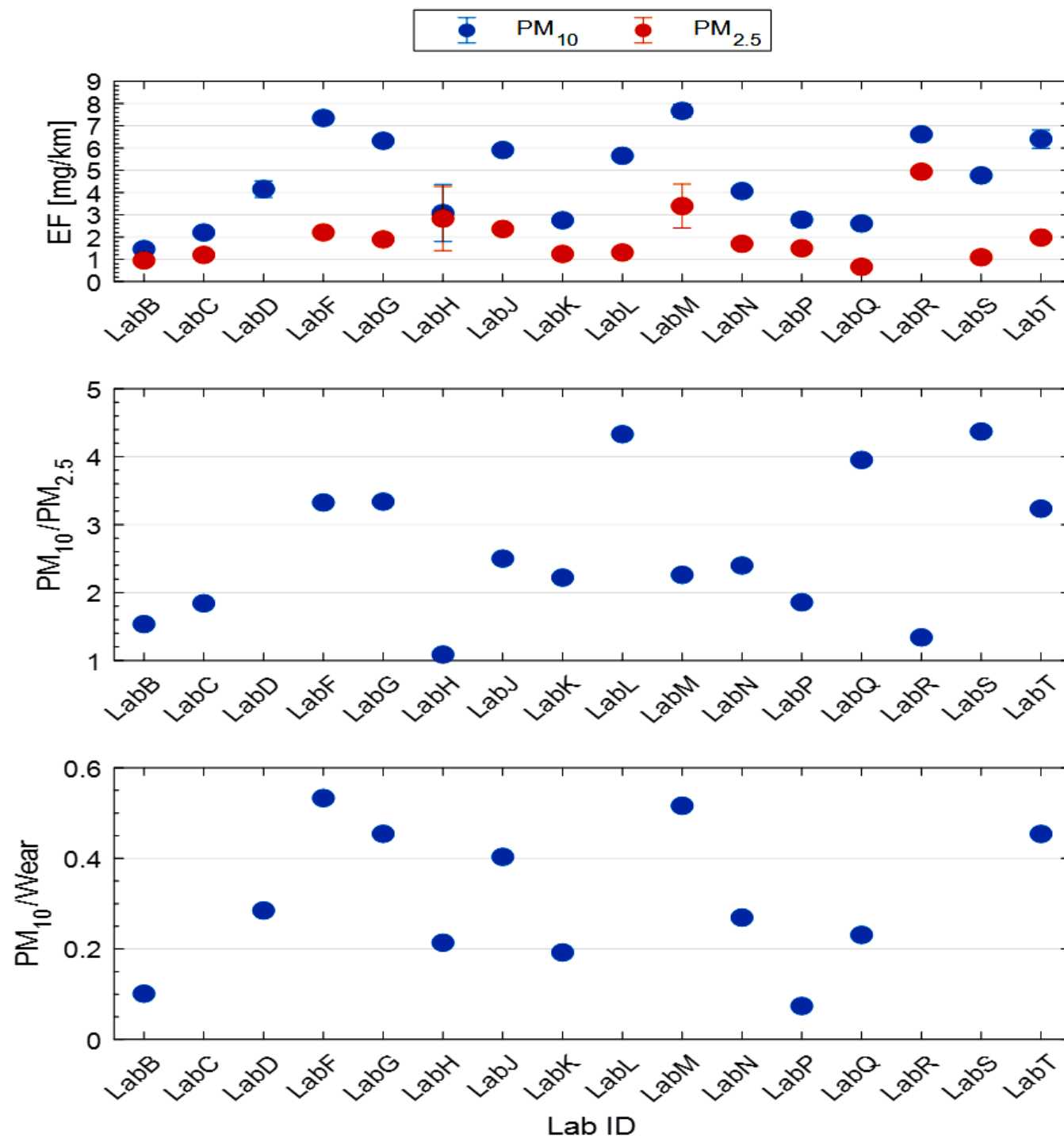


Error Bars => StDev

Brake	Tests #
Br1a	16
Br1b	14
Br2	13
Br3	7
Br4	5
Br5a	4
Br5b	4

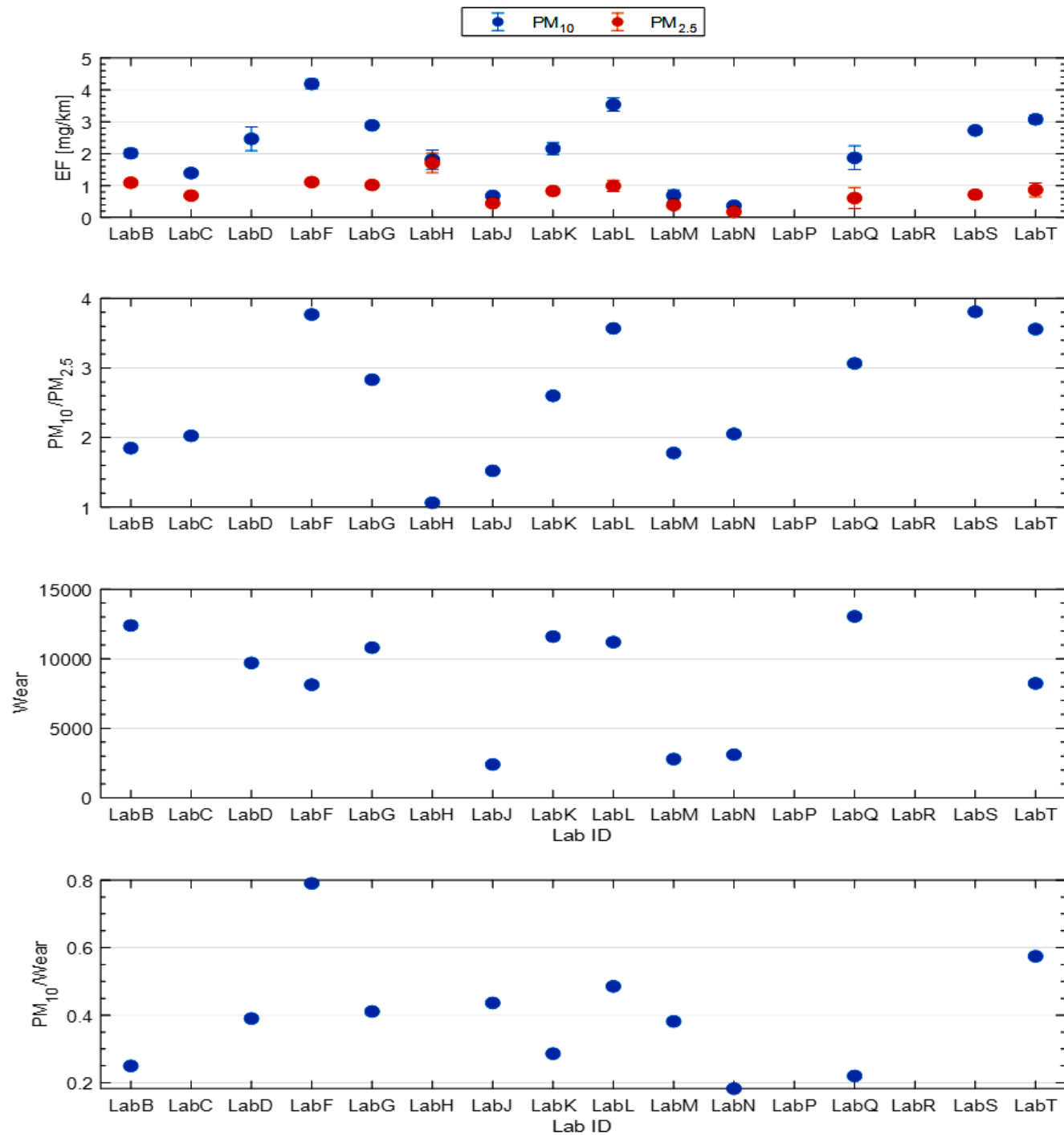
# PM DATA – Br1a

Error Bars => StDev



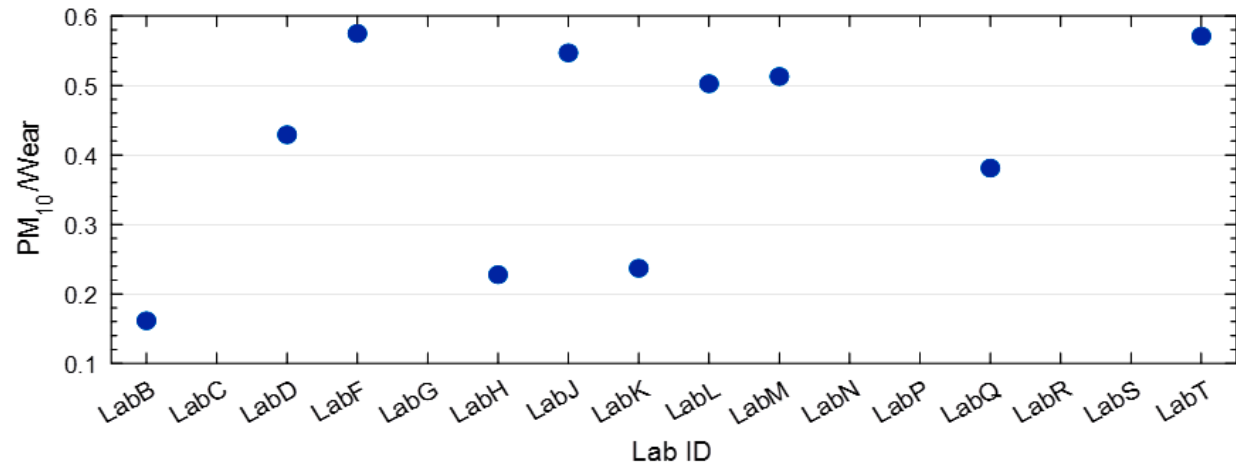
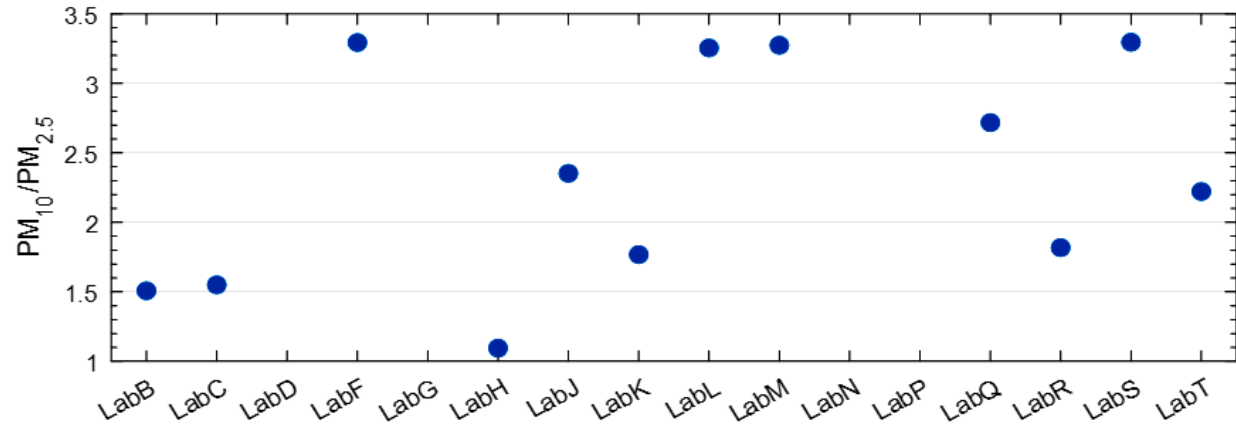
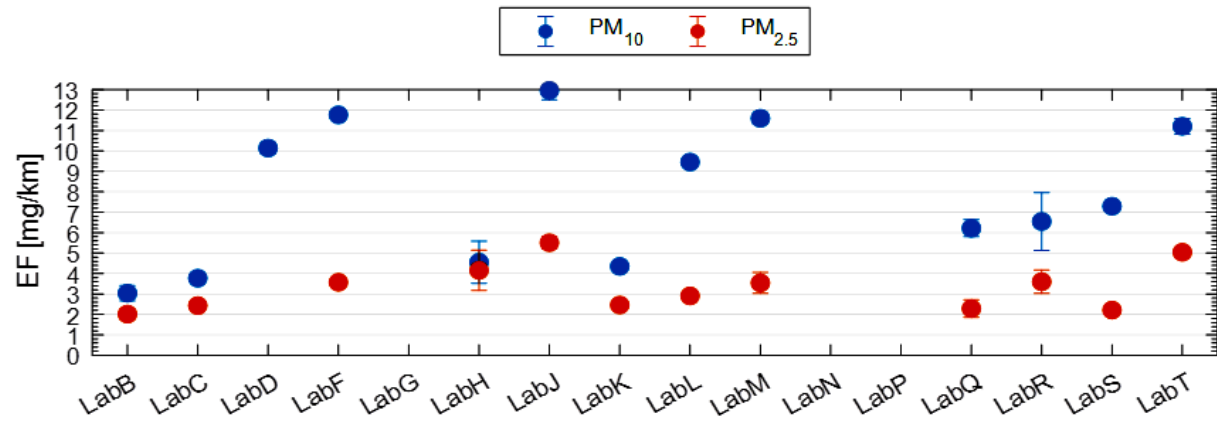
# PM DATA – Br1b

Error Bars => StDev



# PM DATA – Br2

Error Bars => StDev



# PM10 DATA BRAKE LEVEL – REPEATABILITY

