

eTIR web services - Messages E11-E12

E11 - Advance amendment data / E12 - Advance amendment data results



Table of Contents

1. Document revision note	1
2. Related documents	1
3. Purpose	2
4. Target audience	2
5. Prerequisites	2
6. "E11 - Advance amendment data" / "E12 - Advance amendment data results" messages	4
6.1. Sequence diagram	4
6.1.1. Departure	4
6.1.2. Transit	5
6.1.3. Destination	5
6.2. Message context	5
6.2.1. Message forwarding mechanism in the eTIR international system	6
6.2.2. Message prerequisites	7
6.2.3. Update of the Advance TIR/amendment data	7
6.2.4. Communication of advance TIR data for a TIR transport with multiple loading points	7
6.2.5. How to build the E11 - Advance amendment data message	8
6.2.6. Endpoint URL and SOAP Action	10
6.3. "E11 - Advance amendment data" request message	11
6.3.1. Description	11
6.3.2. Field details	11
6.3.3. Field descriptions & usages	17
6.3.4. Referred code lists	29
6.3.5. Conditions and rules	29
6.3.6. How the national customs system should process the information received in the advance amendment data	29
6.3.7. Example	30
6.4. "E12 - Advance amendment data results" response message	33
6.4.1. Description	33
6.4.2. Field details	33
6.4.3. Field descriptions & usages	34
6.4.4. Referred code lists	36
6.4.5. Conditions and rules	36
6.4.6. How to use response data in the TIR Carnet holder information systems	36
6.4.7. Applicable error codes	36
6.4.8. Example	39
7. Fallback procedures	41
8. Support and contact	41
9. Annexes	42
9.1. Version history	42
9.2. More examples	42
9.2.1. Example 1: Itinerary change	42

1. Document revision note



This document has been published on **06/09/2021**, and is valid for the **eTIR international system version 1.0** based on the **eTIR specifications version 4.3.0**.

Please ensure you get the latest version of this document from the [eTIR documentation portal](#) or contact the eTIR service desk ([Support and contact](#)).

2. Related documents

Project documents and collaboration platform

- eTIR documentation portal: <https://etir.org/documentation>
- Project guidelines for customs to connect to the eTIR international system : <https://etir.org/documentation/project-guidelines-customs>
- eTIR web services - Introduction document: <https://etir.org/documentation/introduction>
- eTIR web services - Messages I1-I2: I1 - Accept guarantee / I2 - Acceptance results <https://etir.org/documentation/i1-i2>
- eTIR web services - Messages I3-I4: I3 - Get holder information / I4 - Holder information <https://etir.org/documentation/i3-i4>
- eTIR web services - Messages I5-I6: I5 - Query guarantee / I6 - Query results <https://etir.org/documentation/i5-i6>
- eTIR web services - Messages I7-I8: I7 - Record declaration data / I8 - Record declaration data results <https://etir.org/documentation/i7-i8>
- eTIR web services - Messages I9-I10: I9 - Start TIR operation / I10 - Start results <https://etir.org/documentation/i9-i10>
- eTIR web services - Messages I11-I12: I11 - Terminate TIR operation / I12 - Termination results <https://etir.org/documentation/i11-i12>
- eTIR web services - Messages I13-I14: I13 - Discharge TIR operation / I14 - Discharge results <https://etir.org/documentation/i13-i14>
- eTIR web services - Messages I15-I16: I15 - Notify customs / I16 - Notification confirmation <https://etir.org/documentation/i15-i16>
- eTIR web services - Messages I17-I18: I17 - Refusal to start TIR operation / I18 - Refusal results <https://etir.org/documentation/i17-i18>
- eTIR web services - Messages I19-I20: I19 - Check customs offices / I20 - Customs offices validation <https://etir.org/documentation/i19-i20>
- eTIR web services - Messages E1-E2: E1 - Register guarantee / E2 - Registration results <https://etir.org/documentation/e1-e2>
- eTIR web services - Messages E3-E4: E3 - Cancel guarantee / E4 - Cancellation results <https://etir.org/documentation/e3-e4>
- eTIR web services - Messages E5-E6: E5 - Query guarantee / E6 - Query results <https://etir.org/documentation/e5-e6>
- eTIR web services - Messages E7-E8: E7 - Notify guarantee chain / E8 - Notification confirmation <https://etir.org/documentation/e7-e8>
- eTIR web services - Messages E9-E10: E9 - Advance TIR data / E10 - Advance TIR data results <https://etir.org/documentation/e9-e10>

- eTIR web services - Messages E13-E14: E13 - Cancel advance data / E14 - Cancel advance data results <https://etir.org/documentation/e13-e14>

Legal framework

- TIR Convention handbook: <https://unece.org/fileadmin/DAM/tir/handbook/english/newtirhand/TIR-6Rev11e.pdf>
- Annex 11 to the TIR Convention: <https://etir.org/documentation/annex-11>

eTIR specifications

- Introduction to the eTIR conceptual, functional and technical v4.3: <https://etir.org/etir-introduction>
- eTIR concepts v4.3: <https://etir.org/etir-concepts>
- eTIR functional specifications v4.3: <https://etir.org/etir-functional-specifications>
- eTIR technical specifications v4.3: <https://etir.org/etir-technical-specifications>

Additional resources

- eTIR XML schemas: <https://etir.org/documentation/xsd-files>
- eTIR code lists: <https://etir.org/documentation/code-lists>
- List of eTIR focal points: <https://unece.org/list-etir-focal-points>

3. Purpose

This document describes the **E11 - Advance amendment data** request message, and the **E12 - Advance amendment data results** response message of the eTIR international system web services. It provides all the specifics required to use them (prepare or receive), explains how and when they should be used and explains the error codes that may be returned. It also contains examples and fallback procedures, if applicable.

4. Target audience

This guide is intended for three kinds of ICT teams:

- the ICT teams of the TIR Carnet holders who would wish to connect their information systems to the eTIR international system;
- the ICT teams of the customs authorities in charge of interconnecting their national customs systems to the eTIR international system;
- the ICT teams of the guarantee chains in charge of interconnecting their guarantee chain systems to the eTIR international system.

In this guide, the original sender of the advance TIR data (the TIR Carnet holder), is taken as the main example.

5. Prerequisites



In order to ensure an implementation that delivers the best value and services to the TIR Carnet holders, we recommend the ICT team in charge of establishing the connection to the eTIR international system web services to be accompanied by a subject-matter expert on the TIR Convention.

This document is to be read after having an understanding of the [eTIR concepts](#) and having read the [eTIR functional specifications](#) as well as the [eTIR web services introduction document](#). It is highly recommended keeping the eTIR web services introduction document at hand as this document refers to many elements and diagrams that will be necessary and referred to when reading this document.

From a technical perspective, the following steps should have been completed at this point:

- the secured connection to one of the User Acceptance Testing (UAT) environments of the eTIR international system is established;
- the endpoint URL to the UAT environment is clearly identified and properly configured on the client side;
- all the tools required to connect, test and troubleshoot the messages are ready;
- eTIR web services - Messages E9-E10 should have been implemented and tested.



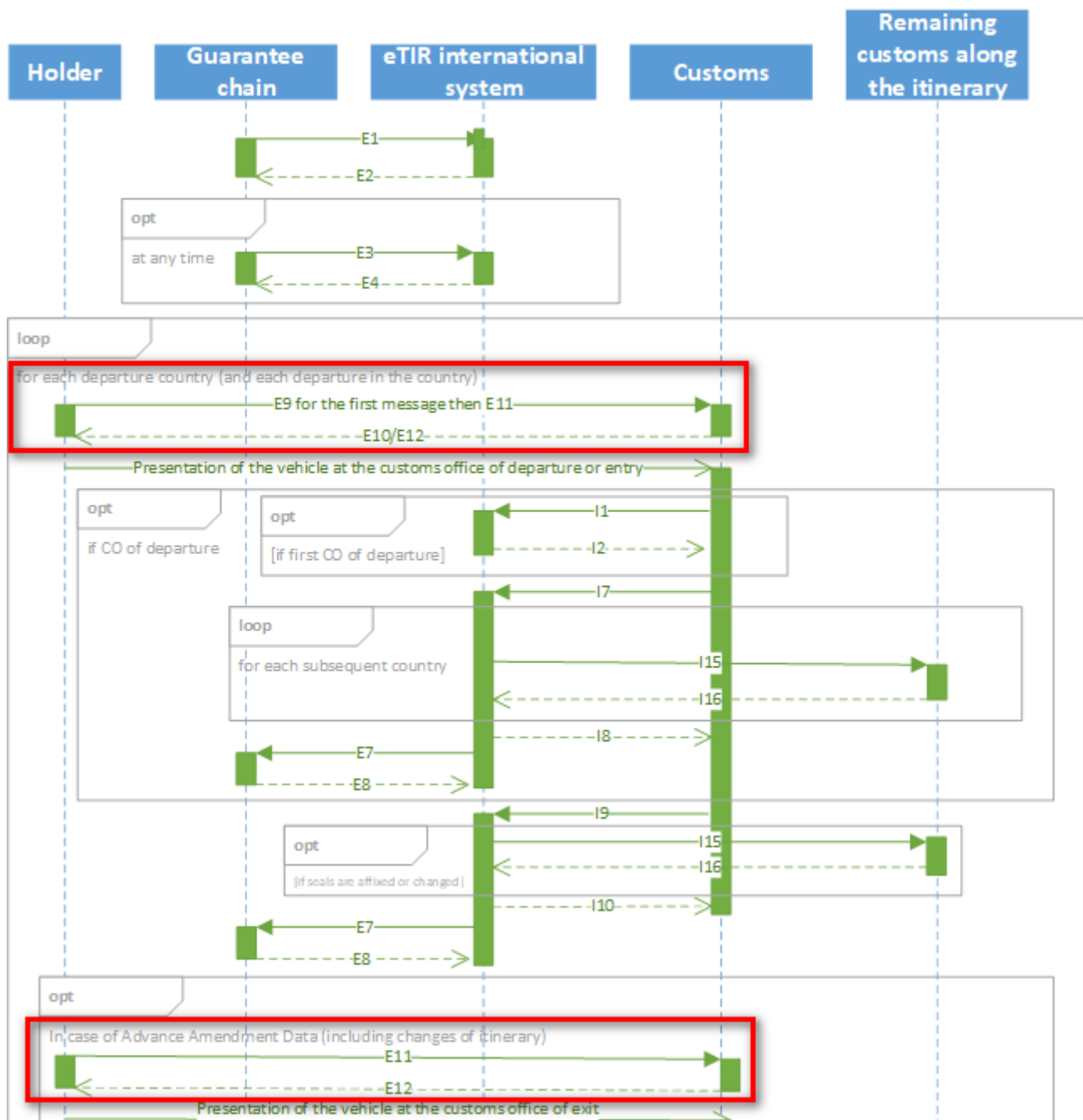
All eTIR messages are identified and belong to a flow described in the [eTIR web services introduction document](#) (see dedicated section). It is key to respect this sequencing else the eTIR international system will return errors due to invalid sequencing of the message as described in the [dedicated eTIR error code web page](#).

6. "E11 - Advance amendment data" / "E12 - Advance amendment data results" messages

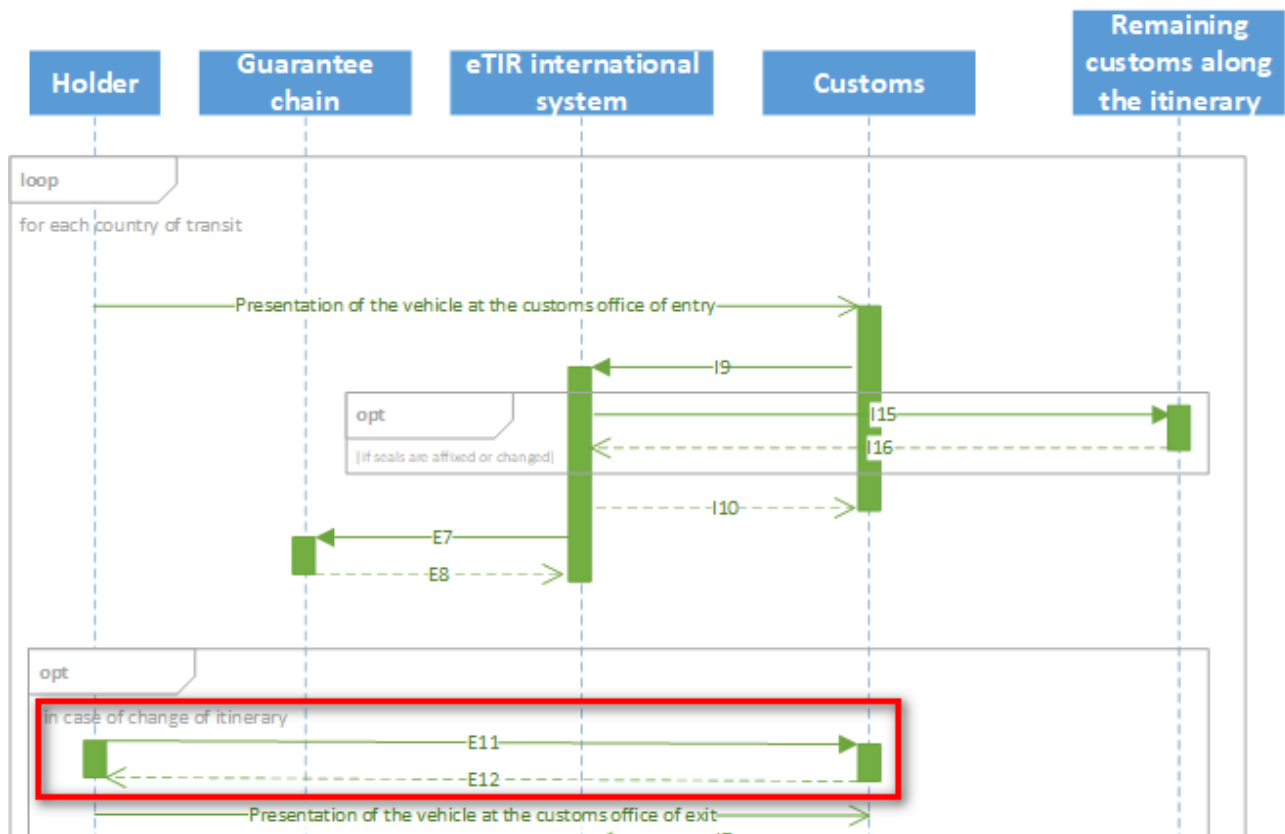
6.1. Sequence diagram

The following sequence diagrams highlight the role and sequence position of the **E11 - Advance amendment data** and **E12 - Advance amendment data results** messages in the context of TIR departure, transit and destination operations.

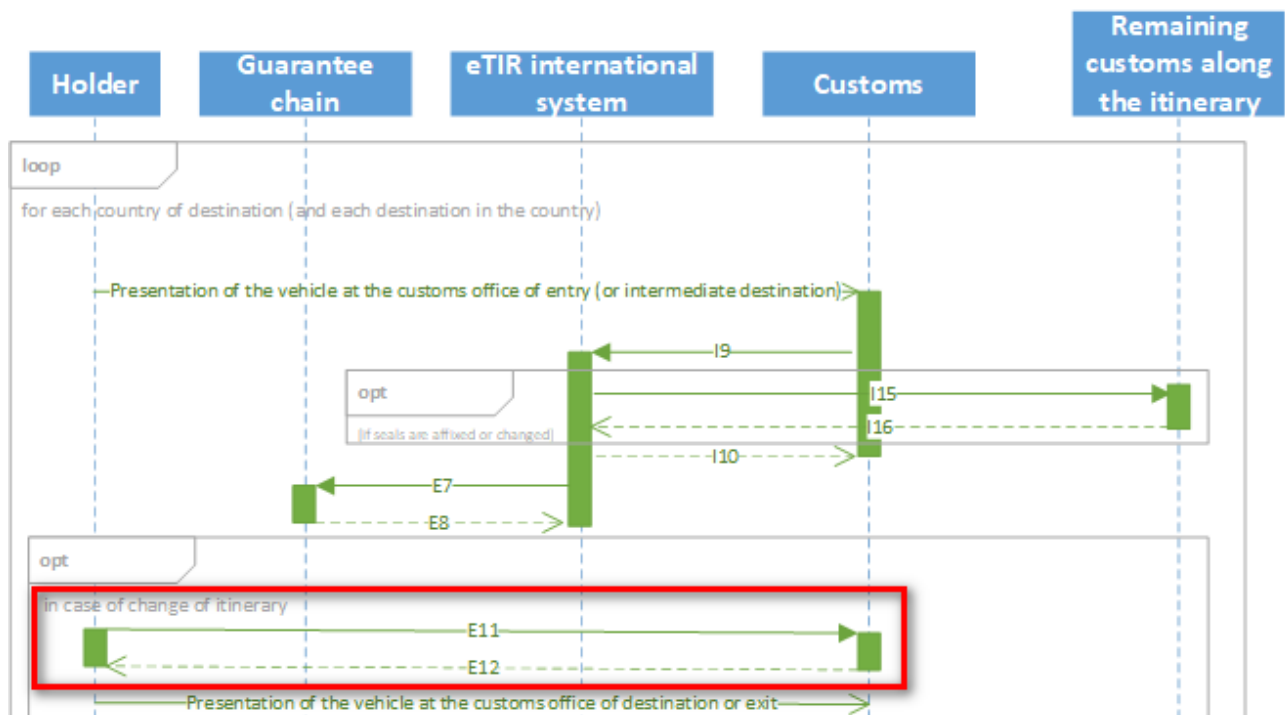
6.1.1. Departure



6.1.2. Transit



6.1.3. Destination



6.2. Message context

This message allows for the TIR Carnet holder to request an amendment to the declaration by sending

advance amendment data to the relevant customs authorities. This amendment can be adding a loading point, an unloading point, changing the itinerary, changing the tractor unit of the TIR transport... all kinds of changes that are already possible in the context of the TIR procedure.



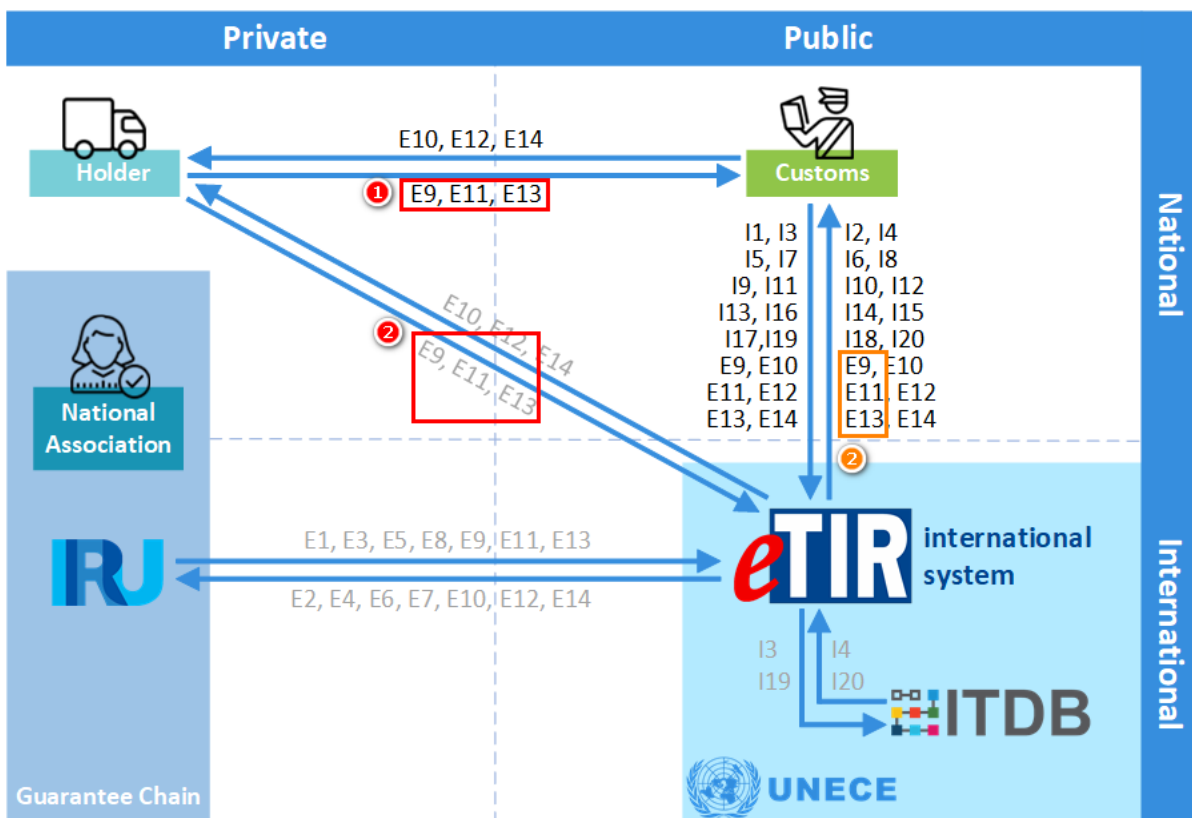
This document applies in particular to the TIR Carnet holder who decides to send **E11 - Advance amendment data** messages via the eTIR international system.

6.2.1. Message forwarding mechanism in the eTIR international system

All eTIR messages sent by the TIR Carnet holder to customs authorities can be communicated either:

1. Directly to the relevant national customs system using the electronic means published by the competent authorities;
2. Via the eTIR international system that will then forward the messages to the relevant national customs systems using its internal "forwarding mechanism".

The following diagram illustrates both options, shown as (1) and (2):



It is important to note that the choice of the electronic means, for the TIR Carnet holder, to send the advance TIR data to the national customs system is defined in [Annex 11](#) of the TIR Convention. In Article 6, it is described that the option (2) (to send it via the eTIR international system) should always exist, whereas the option (1) (to communicate it using other electronic means) depends on the relevant customs authorities as each of them publishes a list of authorized mechanisms. It is also important to note that, in the case of a **TIR Carnet holder to national customs systems** direct communication (or using a third party tool), the format of the messages doesn't have to be exactly as described in the eTIR specifications, but the content must at least contain all the fields and values described in it to ensure all relevant information are available for the subsequent eTIR messages, in particular the **I7 - Record declaration data** message.

The eTIR international system forwarding mechanism performs the following 2 functions:

- Validation of inbound request eTIR messages from TIR Carnet holders, and possibly return errors, if any;
- Forward of inbound request/response eTIR messages to the relevant recipient (the TIR Carnet holder or the national customs system).



As opposed to the notifications, the forwarding mechanism only has one (final) recipient per message.

6.2.2. Message prerequisites

In order for this message to be properly interpreted by the eTIR international system, the following message(s) should have been exchanged before this one:

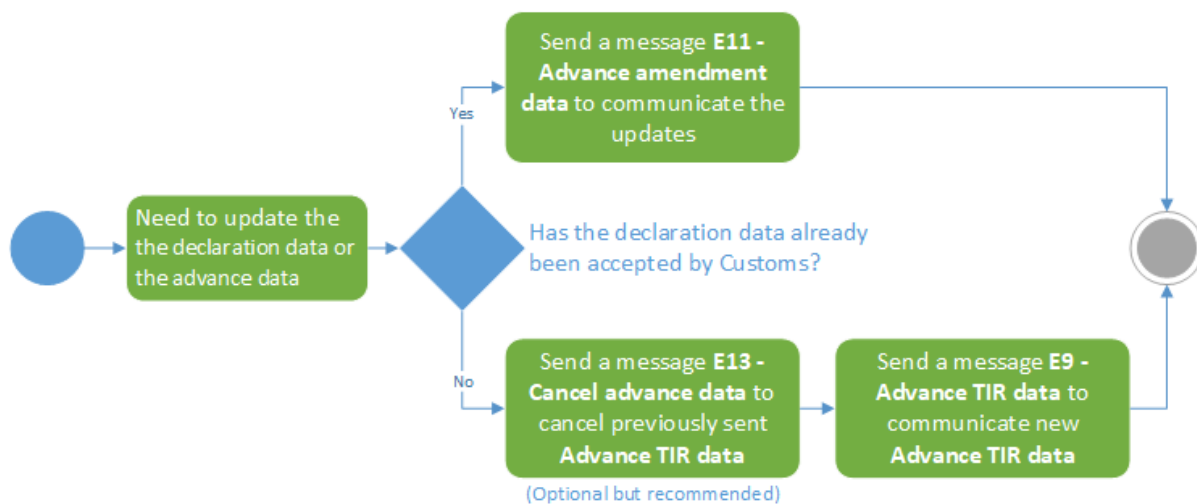
- **E9 - Advance TIR data** and **E10 - Advance TIR data results** (between the TIR Carnet holder and the national customs system): the holder will send to the customs office of departure the advance TIR data that acts as the pre-declaration for the transport.

6.2.3. Update of the Advance TIR/amendment data

In case a TIR Carnet holder has already sent an **E9 - Advance TIR data** message and needs to update its content, it will be required to send either:

- Another **E9 - Advance TIR data** message **if the TIR transport has not started yet**. It is recommended to send an **E13 - Cancel advance data** to cancel the previously sent advance TIR data;
- Or an **E11 - Advance amendment data** message **if the TIR transport has started already**.

The diagram below summarizes this logic, that must be implemented in the TIR Carnet holder information systems, for any need to update the advance data or the declaration data, to be properly processed by the national customs system.

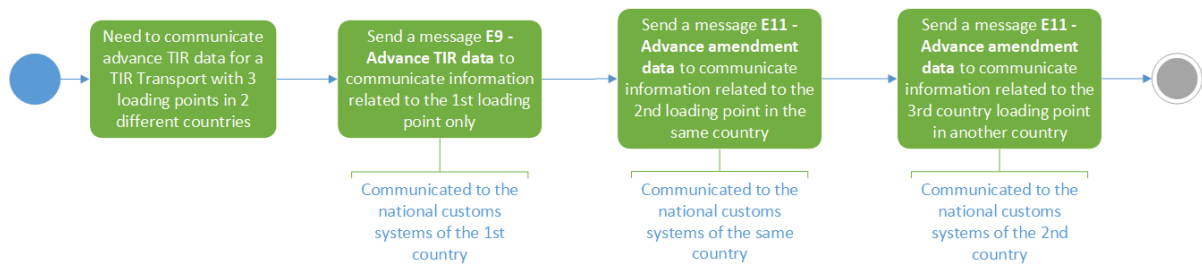


6.2.4. Communication of advance TIR data for a TIR transport with multiple loading points

In case a TIR Carnet holder plans to execute a TIR transport with multiple loading points, possibly in multiple customs territories (countries), advance TIR data must be communicated using an eTIR message to each and every of the customs authorities of the countries where goods will be loaded.

It is important to note that the **E9 - Advance TIR data** message is intended only for the initial customs office of departure and that this message should only contain consignments loaded within that first loading point. Consequently, the TIR Carnet holder must then send an **E11 - Advance amendment data** message to each customs authority where additional loading points are located (possibly in the end contracting party or not), to communicate the advance amendment data related to the consignments to be loaded in the corresponding additional loading points.

The diagram below illustrates the example of a TIR transport with three loading points in two different customs territories and the **E9 - Advance TIR data** and **E11 - Advance amendment data** messages required:



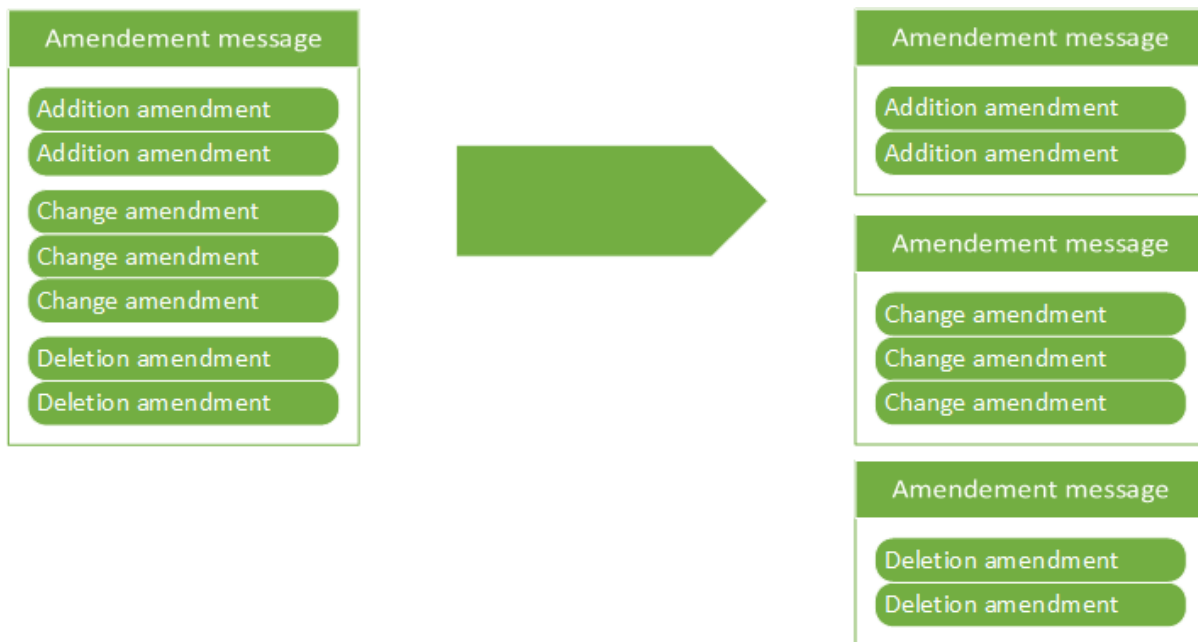
It's important to note that in such case, the **E9 - Advance TIR data** and **E11 - Advance amendment data** messages can be sent all before presenting the transport vehicle to the first departure customs office.

6.2.5. How to build the E11 - Advance amendment data message

In the **E11 - Advance amendment data** message, the amendment list represents all the amendments that the user wants to perform, aggregated by **type of amendment** (addition, update, deletion). For each of these types, we need to specify a list of **pointers** referring to each of the elements to be amended.

For example: if the holder wishes to modify the **agent** class and the **heavy or bulky goods indicator** attribute, it can be done through a single **E11 - Advance amendment data** message. This message shall have one **amendment** element containing 2 pointers **/DocumentMetadata/Declaration/Agent** and **/DocumentMetadata/Declaration/Consignment**.

An **E11 - Advance amendment data** message may contain more than one amendment, however when communicating multiple amendments of different types (addition, update, deletion), it is recommended to use separate **E11 - Advance amendment data** messages for each amendment type.



Guidelines regarding amendments:

General guidelines:

- There are only two use cases for the **E11 - Advance amendment data** message: amending the declaration data of an ongoing TIR transport, or adding a new consignment to a TIR transport.
- The eTIR international system only forwards **E11 - Advance amendment data** messages to a single recipient. Therefore, since adding a consignment to the TIR transport must be sent to the customs office where the loading point should occur, a dedicated **E11 - Advance amendment data** message should be sent.
- The amendment pointer should never be set to `"/DocumentMetadata/Declaration"` else the eTIR international system cannot determine the recipient to whom the message should be forwarded to.
- How to determine the recipient of the **E11 - Advance amendment data** message?
 - If the **E11 - Advance amendment data** message is using to add a new consignment to a TIR transport, then the recipient is the national customs system of the country of loading.
 - Else, the recipient is the national customs system of the ongoing TIR operation.

Addition amendments (code 01 from the code list: [Amendment type code \(eTIR\)](#)):

- The **addition** amendment can only be used on non-existing XML elements or empty XML attributes (else, if the element/attribute already exists, please use a **change** amendment to update it).
- When using the amendment type **addition**, the new elements defined in the pointer list **must** be provided in the message content.
- When adding an element to a list, the sequence number must be properly set (and must be equal to the last sequence number of the current list plus one). Furthermore, it is important to note that the pointer should be set to the list and not to the new item in this list (e.g.: the value should be `/DocumentMetadata/Declaration/Consignment` when adding a consignment).

Change amendments (code 02 from the code list: [Amendment type code \(eTIR\)](#)):

- The **change** amendment can only be used on existing and non-empty XML elements/attributes (else, if the element/attribute doesn't exist, please use an **addition** amendment to add it).
- When using the amendment type **change**, the elements defined in the pointer list **must** be provided in the message content. If a non-empty element/attribute needs to be replaced by an empty one, please use a **deletion** amendment.

- When setting the pointer to a class (non-final element), all child elements will be overwritten. This means that missing elements will be deleted and that new elements will be added.
- When modifying multiple elements of the same class, it is recommended setting the pointer to the class, and resending all of its data instead of sending multiple amendments.
- If a list needs to be reordered, the **change** amendment type must be used, the list element is set to the pointer and the entire list needs to be resent.
- When changing an element in a list, the pointer is set to the specific element of the list (note that the list indexing is 1-based in XPath). E.g.: to change the second consignment information, the pointer is set to **/DocumentMetadata/Declaration/Consignment[2]**.



Amendments shall not invalidate conditions. In order to allow for easier message validation by the recipient, we recommend the senders of the **E11 - Advance amendment data** message to use **change** amendments on parent elements rather than using combined **deletion/addition** amendments.

Deletion amendments (code 03 from the code list: [Amendment type code \(eTIR\)](#)):

- It is not possible to delete a required element.
- When deleting an element in a list, the pointer should be set to the specific element of the list. If the pointer is set to the list, then all the elements of the list will be deleted.

Special case: change of itinerary amendment

As for the other types of amendments, in case of a change of itinerary, the TIR Carnet holder should send an **E11 - Advance amendment data** message before customs authorities can actually change the itinerary by sending an **(amendment) I7 - Record declaration data** message to the eTIR international system. Therefore, when entering the newly added country to the initial itinerary, its customs authorities will be capable to query the eTIR international system to get information about this TIR transport (using the **I5 - Query guarantee** message). In case of a change of itinerary during the TIR transport, and before entering the country newly added to the itinerary, the TIR Carnet holder should send the **E11 - Advance amendment data** to the customs authorities of the country it is currently in. Doing so will allow for the itinerary to be amended, just before exiting the current country, by the national customs system sending an **(amendment) I7 - Record declaration data** to the eTIR international system.

6.2.6. Endpoint URL and SOAP Action

If the TIR Carnet holder decides to communicate via the eTIR international system, the URL of the endpoint to use when sending the **E11 - Advance amendment data** request message is: [https://etir-
uat-01.unece.org/etir/v4.3/advanceData](https://etir-uat-01.unece.org/etir/v4.3/advanceData)

Also note that the WSDL can be accessed at the following URL: [https://etir-
uat-01.unece.org/etir/
v4.3/advanceData?wsdl](https://etir-uat-01.unece.org/etir/v4.3/advanceData?wsdl)

The SOAP action value to use is: **advanceAmendmentData** (so the WS-Addressing element should be set to *etir:v4.3:advanceData/advanceAmendmentData*)

6.3. "E11 - Advance amendment data" request message

6.3.1. Description

The TIR Carnet holder sends the **E11 - Advance amendment data** request message to the eTIR international system to provide customs authorities of the next TIR operation with advance (declaration) amendment information.

The XSD file related to the **E11 - Advance amendment data** message is available at the following URL: https://wiki.unece.org/download/attachments/106299941/WCO_eTIR_E11_1.xsd.

6.3.2. Field details



Kindly note that the metadata fields have been removed from this table has been removed to improve the readability, as it is part of every eTIR message. You can find the details about metadata in the [eTIR introduction document](#) dedicated section.

eTIR field name	Mapping to the XML element (XPath)	Status	Cardinality	Format	Code lists	Conditions	Rules
MESSAGE							
└ Message function, coded	Function	R	1..1	n..2	CL16		
└ Message identifier	ID	R	1..1	an..70			
└ Issuing date time	IssueDateTime	R	1..1	an..35			
└ Type, coded	TypeCode	R	1..1	an..3	CL26		
└ Total gross weight	TotalGrossMassMeasure	O	0..1	n..16,6			
└ ADDITIONALINFORMATION	AdditionalInformation	O	0..1				
└ └ Remarks	AdditionalInformation/Content	O	0..1	an..512			
└ AGENT	Agent	O	0..1				
└ └ Name	Agent/Name	D	0..1	an..70		C001	
└ └ Identifier	Agent/ID	D	0..1	an..35		C001	
└ └ Role, coded	Agent/RoleCode	R	1..1	an..3	CL02		
└ └ ADDRESS	Agent/Address	D	0..1			C001	
└ └ └ City name	Agent/Address/CityName	R	1..1	an..35			
└ └ └ Country, coded	Agent/Address/CountryCode	R	1..1	a2	CL04		
└ └ └ Street and number/P.O. Box	Agent/Address/Line	R	1..1	an..256			
└ └ └ Postcode identification	Agent/Address/PostcodeID	O	0..1	an..17			
└ AMENDMENT	Amendment	R	1..*				

eTIR field name	Mapping to the XML element (XPath)	Status	Cardinality	Format	Code lists	Conditions	Rules
Type, coded	Amendment/ChangeReasonCode	R	1..1	an..3	CL17		
POINTER	Amendment/Pointer	R	1..*				
Sequence number	Amendment/Pointer/SequenceNumeric	R	1..1	n..5			
Location	Amendment/Pointer/Location	R	1..1	an..512			
SUBCONTRACTOR	Carrier	O	0..*				
Name	Carrier/Name	D	0..1	an..70		C001	
Identifier	Carrier/ID	D	0..1	an..35		C001	
ADDRESS	Carrier/Address	D	0..1			C001	
City name	Carrier/Address/CityName	R	1..1	an..35			
Country, coded	Carrier/Address/CountryCode	R	1..1	a2	CL04		
Street and number/P.O. Box	Carrier/Address/Line	R	1..1	an..256			
Postcode identification	Carrier/Address/PostcodeID	O	0..1	an..17			
CONSIGNMENT	Consignment	O	0..*				
Sequence number	Consignment/SequenceNumeric	R	1..1	n..5			
Heavy or bulky goods indicator	Consignment/HeavyOrBulkyGoodsIndicator	R	1..1				
ATTACHEDDOCUMENTS	Consignment/AdditionalDocument	O	0..*				
Number	Consignment/AdditionalDocument/ID	R	1..1	an..70			
Issuing date time	Consignment/AdditionalDocument/IssueDateTime	R	1..1	an..35			
Type, coded	Consignment/AdditionalDocument/TypeCode	R	1..1	an..3	CL06		
BINARYFILE	Consignment/AdditionalDocument/BinaryFile	O	0..1				
Identifier	Consignment/AdditionalDocument/BinaryFile/ID	R	1..1	an..256			
Title	Consignment/AdditionalDocument/BinaryFile/Title	R	1..1	an..256			
Author name	Consignment/AdditionalDocument/BinaryFile/AuthorName	O	0..1	an..70			
Version	Consignment/AdditionalDocument/BinaryFile/VersionID	O	0..1	an..17			
File name	Consignment/AdditionalDocument/BinaryFile/FileNameText	O	0..1	an..256			
URI	Consignment/AdditionalDocument/BinaryFile/URIID	O	0..1	an..2048			
MIME	Consignment/AdditionalDocument/BinaryFile/MIMECode	O	0..1	an..70			
Encoding	Consignment/AdditionalDocument/BinaryFile/EncodingCode	O	0..1	an..17			
Character set	Consignment/AdditionalDocument/BinaryFile/CharacterSetCode	O	0..1	n..17			
Include binary object	Consignment/AdditionalDocument/BinaryFile/IncludedBinaryObjectBinaryObject	O	0..1	N/A			
Access	Consignment/AdditionalDocument/BinaryFile/Access	O	0..1	an..256			
Description	Consignment/AdditionalDocument/BinaryFile/Description	O	0..1	an..256			

eTIR field name	Mapping to the XML element (XPath)	Status	Cardinality	Format	Code lists	Conditions	Rules
Size	Consignment/AdditionalDocument/BinaryFile/SizeMeasure	O	0..1	n..16,6			
Hash code	Consignment/AdditionalDocument/BinaryFile/HashCode	O	0..1	an..256			
Hash code algorithm id	Consignment/AdditionalDocument/BinaryFile/HashCodeAlgorithmIDCode	O	0..1	an..6			
CONSIGNMENTITEM	Consignment/ConsignmentItem	R	1..*				
Sequence number	Consignment/ConsignmentItem/SequenceNumeric	R	1..1	n..5			
ADDITIONALINFORMATION	Consignment/ConsignmentItem/AdditionalInformation	O	0..*				
Remarks	Consignment/ConsignmentItem/AdditionalInformation/Content	R	1..1	an..512			
GOODS	Consignment/ConsignmentItem/Commodity	R	1..1				
Description	Consignment/ConsignmentItem/Commodity/CargoDescription	D	0..1	an..256		C004	
CLASSIFICATION	Consignment/ConsignmentItem/Commodity/Classification	O	0..*				R008
Code	Consignment/ConsignmentItem/Commodity/Classification/ID	R	1..1	an..18			
Type, coded	Consignment/ConsignmentItem/Commodity/Classification/IdentificationTypeCode	R	1..1	an..3	CL03		
CONSIGNEE	Consignment/ConsignmentItem/Consignee	O	0..1				
Name	Consignment/ConsignmentItem/Consignee/Name	D	0..1	an..70		C001	
Identifier	Consignment/ConsignmentItem/Consignee/ID	D	0..1	an..35		C001	
ADDRESS	Consignment/ConsignmentItem/Consignee/Address	D	0..1			C001	
City name	Consignment/ConsignmentItem/Consignee/Address/CityName	R	1..1	an..35			
Country, coded	Consignment/ConsignmentItem/Consignee/Address/CountryCode	R	1..1	a2	CL04		
Street and number/P.O. Box	Consignment/ConsignmentItem/Consignee/Address/Line	R	1..1	an..256			
Postcode identification	Consignment/ConsignmentItem/Consignee/Address/PostcodeID	O	0..1	an..17			
CONSIGNOR	Consignment/ConsignmentItem/Consignor	O	0..1				
Name	Consignment/ConsignmentItem/Consignor/Name	D	0..1	an..70		C001	
Identifier	Consignment/ConsignmentItem/Consignor/ID	D	0..1	an..35		C001	
ADDRESS	Consignment/ConsignmentItem/Consignor/Address	D	0..1			C001	
City name	Consignment/ConsignmentItem/Consignor/Address/CityName	R	1..1	an..35			
Country, coded	Consignment/ConsignmentItem/Consignor/Address/CountryCode	R	1..1	a2	CL04		
Street and number/P.O. Box	Consignment/ConsignmentItem/Consignor/Address/Line	R	1..1	an..256			
Postcode identification	Consignment/ConsignmentItem/Consignor/Address/PostcodeID	O	0..1	an..17			

eTIR field name	Mapping to the XML element (XPath)	Status	Cardinality	Format	Code lists	Conditions	Rules
DELIVERYDESTINATION	Consignment/ConsignmentItem/DeliveryDestination	O	0..1				
Name	Consignment/ConsignmentItem/DeliveryDestination/Name	R	1..1	an..70			
ADDRESS	Consignment/ConsignmentItem/DeliveryDestination/Address	R	1..1				
City name	Consignment/ConsignmentItem/DeliveryDestination/Address/ cityName	R	1..1	an..35			
Country, coded	Consignment/ConsignmentItem/DeliveryDestination/Address/ CountryCode	R	1..1	a2	CL04		
Street and number/P.O. Box	Consignment/ConsignmentItem/DeliveryDestination/Address/ Line	R	1..1	an..256			
Postcode identification	Consignment/ConsignmentItem/DeliveryDestination/Address/ PostcodeID	O	0..1	an..17			
GOODSMEASURE	Consignment/ConsignmentItem/GoodsMeasure	R	1..1				
Gross weight	Consignment/ConsignmentItem/GoodsMeasure/GrossMassMeasure	R	1..1	n..16,6			
PACKAGING	Consignment/ConsignmentItem/Packaging	R	1..*				
Sequence number	Consignment/ConsignmentItem/Packaging/SequenceNumeric	R	1..1	n..5			
Marks and numbers	Consignment/ConsignmentItem/Packaging/MarksNumbersID	D	0..1	an..512		C002	
Number of packages	Consignment/ConsignmentItem/Packaging/QuantityQuantity	D	0..1	n..8		C002	
Type, coded	Consignment/ConsignmentItem/Packaging/TypeCode	R	1..1	an..2	CL07		
TRANSPORTEQUIPMENT	Consignment/ConsignmentItem/TransportEquipment	D	0..1			C003	
Identification	Consignment/ConsignmentItem/TransportEquipment/ID	R	1..1	an..17			
UCR	Consignment/ConsignmentItem/UCR	O	0..1				
Identifier	Consignment/ConsignmentItem/UCR/ID	O	0..1	an..35			
LOADINGLOCATION	Consignment/LoadingLocation	O	0..1				
Name	Consignment/LoadingLocation/Name	O	0..1	an..256			
NOTIFYPARTY	Consignment/NotifyParty	O	0..1				
Name	Consignment/NotifyParty/Name	D	0..1	an..70		C001	
Identifier	Consignment/NotifyParty/ID	D	0..1	an..35		C001	
ADDRESS	Consignment/NotifyParty/Address	D	0..1			C001	
City name	Consignment/NotifyParty/Address/ cityName	R	1..1	an..35			
Country, coded	Consignment/NotifyParty/Address/ CountryCode	R	1..1	a2	CL04		
Street and number/P.O. Box	Consignment/NotifyParty/Address/ Line	R	1..1	an..256			
Postcode identification	Consignment/NotifyParty/Address/ PostcodeID	O	0..1	an..17			
CUSTOMSOFFICEOFDEPARTURE	Consignment/TransitDeparture	R	1..1				
Identifier	Consignment/TransitDeparture/ID	R	1..1	an..35			

eTIR field name	Mapping to the XML element (XPath)	Status	Cardinality	Format	Code lists	Conditions	Rules
CUSTOMSOFFICEOFDESTINATION	Consignment/TransitDestination	R	1..1				
Identifier	Consignment/TransitDestination/ID	R	1..1	an..35			
TRANSPORTMEANS	Consignment/TransitTransportMeans	R	1..*				R002
Identifier	Consignment/TransitTransportMeans/ID	R	1..1	an..25			
Type, coded	Consignment/TransitTransportMeans/TypeCode	R	1..1	an..4	CL05		
Nationality, coded	Consignment/TransitTransportMeans/RegistrationNationalityCode	R	1..1	a2	CL04		
Conveyance reference number	Consignment/TransitTransportMeans/JourneyID	O	0..1	an..17			
Sequence number	Consignment/TransitTransportMeans/SequenceNumeric	R	1..1	n..5			
COUNTRYOFROUTING	Consignment/TransitTransportMeans/Itinerary	R	1..*				R001
Sequence number	Consignment/TransitTransportMeans/Itinerary/SequenceNumeric	R	1..1	n..5			
Country, coded	Consignment/TransitTransportMeans/Itinerary/RoutingCountryCode	R	1..1	a2	CL04		
TRANSPORTEQUIPMENT	Consignment/TransportEquipment	D	0..*			C003	
Sequence number	Consignment/TransportEquipment/SequenceNumeric	R	1..1	n..5			
Size and type, coded	Consignment/TransportEquipment/CharacteristicCode	R	1..1	an..4	CL01		
Identifier	Consignment/TransportEquipment/ID	R	1..1	an..17			
CERTIFICATEOFAPPROVAL	Consignment/TransportEquipment/AdditionalDocument	D	0..1			C005	
Number	Consignment/TransportEquipment/AdditionalDocument/ID	R	1..1	an..70			
Issuing date time	Consignment/TransportEquipment/AdditionalDocument/IssueDateTime	R	1..1	an..35			
Type, coded	Consignment/TransportEquipment/AdditionalDocument/TypeCode	R	1..1	an..3	CL06		
BINARYFILE	Consignment/TransportEquipment/AdditionalDocument/BinaryFile	O	0..1				
Identifier	Consignment/TransportEquipment/AdditionalDocument/BinaryFile/ID	R	1..1	an..256			
Title	Consignment/TransportEquipment/AdditionalDocument/BinaryFile/Title	R	1..1	an..256			
Author name	Consignment/TransportEquipment/AdditionalDocument/BinaryFile/AuthorName	O	0..1	an..70			
Version	Consignment/TransportEquipment/AdditionalDocument/BinaryFile/VersionID	O	0..1	an..17			
File name	Consignment/TransportEquipment/AdditionalDocument/BinaryFile/FileNameText	O	0..1	an..256			

eTIR field name	Mapping to the XML element (XPath)	Status	Cardinality	Format	Code lists	Conditions	Rules
URI	Consignment/TransportEquipment/AdditionalDocument/BinaryFile/URIID	O	0..1	an..2048			
MIME	Consignment/TransportEquipment/AdditionalDocument/BinaryFile/MIMECode	O	0..1	an..70			
Encoding	Consignment/TransportEquipment/AdditionalDocument/BinaryFile/EncodingCode	O	0..1	an..17			
Character set	Consignment/TransportEquipment/AdditionalDocument/BinaryFile/CharacterSetCode	O	0..1	n..17			
Include binary object	Consignment/TransportEquipment/AdditionalDocument/BinaryFile/IncludedBinaryObjectBinaryObject	O	0..1	N/A			
Access	Consignment/TransportEquipment/AdditionalDocument/BinaryFile/Access	O	0..1	an..256			
Description	Consignment/TransportEquipment/AdditionalDocument/BinaryFile/Description	O	0..1	an..256			
Size	Consignment/TransportEquipment/AdditionalDocument/BinaryFile/SizeMeasure	O	0..1	n..16,6			
Hash code	Consignment/TransportEquipment/AdditionalDocument/BinaryFile/HashCode	O	0..1	an..256			
Hash code algorithm id	Consignment/TransportEquipment/AdditionalDocument/BinaryFile/HashCodeAlgorithmIDCode	O	0..1	an..6			
SEAL	Consignment/TransportEquipment/Seal	O	0..*				
Sequence number	Consignment/TransportEquipment/Seal/SequenceNumeric	R	1..1	n..5			R003, R004
Seal number	Consignment/TransportEquipment/Seal/ID	R	1..1	an..35			R005
Seal type, coded	Consignment/TransportEquipment/Seal/TypeCode	O	0..1	an..3	CL08		
GUARANTEE	ObligationGuarantee	R	1..1				
Reference	ObligationGuarantee/ReferenceID	R	1..1	an..35			
HOLDER	Principal	R	1..1				
Name	Principal/Name	O	0..1	an..70			
Identifier	Principal/ID	R	1..1	an..35			
ADDRESS	Principal/Address	O	0..1				
City name	Principal/Address/CityName	R	1..1	an..35			
Country, coded	Principal/Address/CountryCode	R	1..1	a2	CL04		
Street and number/P.O. Box	Principal/Address/Line	R	1..1	an..256			
Postcode identification	Principal/Address/PostcodeID	O	0..1	an..17			

6.3.3. Field descriptions & usages



Kindly note that the metadata fields have been removed from this table has been removed to improve the readability, as it is part of every eTIR message. You can find the details about metadata in the [eTIR introduction document](#) dedicated section.

eTIR field name	Mapping to the XML element (XPath)	Description	Usage
MESSAGE		Class representing the declaration data as accepted by customs	
└ Message function, coded	Function	Code describing the function of the message	The value should be set to "4" (Change)
└ Message identifier	ID	Unique identifier of the message	The value should be a Globally Unique Identifier (GUID) as detailed in the dedicated section of the introduction document
└ Issuing date time	IssueDateTime	Date at which the message E11 was issued by the TIR Carnet holder	The value should be a date and time to be provided following the EDIFACT 208 format CCYYMMDDHHMMSSZHHMM (http://www.unece.org/trade/unttdid/d13b/tred/tred2379.htm). For Example: 20200820145600+0100 represents 20 August 2020 at 14:56 UTC+01:00.
└ Type, coded	TypeCode	Code of the message type	The value should be set to "E11"
└ Total gross weight	TotalGrossMassMeasure	Total gross weight of goods (including packaging) of the declaration	The value should be the total gross weight as a decimal number. The unit should be defined in the Measure Unit. Code attribute and should match one of the values listed in the list Measurement unit code (UNECE Recommendation 20)
└ ADDITIONALINFORMATION	AdditionalInformation	Class containing potential additional information at the declaration level	
└ Remarks	AdditionalInformation/Content	Text used to allow for remarks to the declaration from the TIR Carnet holder	The value should be containing the remarks to the declaration from the transporter, or should remain blank if there are none
└ AGENT	Agent	Class representing the potential agent which would declare the goods on behalf of the TIR Carnet holder	
└ Name	Agent/Name	Name of the agent	The value should be the official company name, or the first and last name of the person in case of physical person, to allow for quick identification
└ Identifier	Agent/ID	Unique identifier of the agent	The value should be the unique identifier of the agent

eTIR field name	Mapping to the XML element (XPath)	Description	Usage
⊢ Role, coded	Agent/RoleCode	Code of the role of the agent	The value should be the code matching the role of the agent from the list Party role code (UN/EDIFACT 3035)
⊣ ADDRESS	Agent/Address	Class representing the physical address of the Agent	
⊢ City name	Agent/Address/CityName	City name of the physical address of the agent	The value should be the city name of the physical address of the agent
⊢ Country, coded	Agent/Address/CountryCode	Code of the country of the physical address of the agent	The value should be the code of the country of the physical address of the agent from the list Country name code (ISO 3166-1-alpha-2)
⊢ Street and number/P.O. Box	Agent/Address/Line	Street name of the physical address of the agent	The value should be the street name and number (or equivalent) of the physical address of the agent
⊣ Postcode identification	Agent/Address/PostcodeID	Postal/Zip code of the physical address of the agent	The value should be the postal/ZIP code of the physical address of the agent
┌─ AMENDMENT	Amendment	Class representing the list of potential amendments to the declaration	
⊢ Type, coded	Amendment/ChangeReasonCode	Code describing the type of amendment	The value should be the code matching the type of amendment from the list Amendment type code (eTIR) (https://etir.org/documentation/code-lists#page=121)
⊣ POINTER	Amendment/Pointer	Pointer to the part of the declaration to be amended	
⊢ Sequence number	Amendment/Pointer/SequenceNumeric	Index of the pointer in the list	The value should be the 1-based index of the pointer in the list
⊣ Location	Amendment/Pointer/Location	Location of the class or attribute to be amended	The value should be the location of the class or attribute following the XPath syntax
┌─ SUBCONTRACTOR	Carrier	Class representing the potential agent which undertakes or arranges transport of goods between named points	
⊢ Name	Carrier/Name	Name of the subcontractor	The value should be the official company name, or the first and last name of the person in case of physical person, to allow for quick identification
⊢ Identifier	Carrier/ID	Unique identifier of the subcontractor	The value should be the unique identifier of the subcontractor
⊣ ADDRESS	Carrier/Address	Class representing the physical address of the subcontractor	
⊢ City name	Carrier/Address/CityName	City name of the physical address of the subcontractor	The value should be the city name of the physical address of the subcontractor

eTIR field name	Mapping to the XML element (XPath)	Description	Usage
Country, coded	Carrier/Address/CountryCode	Code of the country of the physical address of the subcontractor	The value should be the code of the country of the physical address of the subcontractor from the list Country name code (ISO 3166-1-alpha-2)
Street and number/P.O. Box	Carrier/Address/Line	Street name of the physical address of the subcontractor	The value should be the street name and number (or equivalent) of the physical address of the subcontractor
Postcode identification	Carrier/Address/PostcodeID	Postal/Zip code of the physical address of the subcontractor	The value should be the postal/ZIP code of the physical address of the subcontractor
CONSIGNMENT	Consignment	Class representing the list of details on the transport of goods between a loading point and an unloading point	
Sequence number	Consignment/SequenceNumeric	Index of the consignment in the list	The value should be the 1-based index of the consignment in the list
Heavy or bulky goods indicator	Consignment/HeavyOrBulkyGoodsIndicator	Code describing whether the goods are considered (according to article 29) as "heavy or bulky", as defined article 1 (p) of the TIR Convention.	The value should be "1" if the goods are considered by the customs as "heavy or bulky" or "0" otherwise (to be filled out for all amendments related to a consignment)
ATTACHEDDOCUMENTS	Consignment/AdditionalDocument	Class representing the list of potential additional documents supplied as part of the declaration and related to the consignment	
Number	Consignment/AdditionalDocument/ID	Identifier of the document	The value should be an ID identifying the document and it should be unique among all other attached documents of the declaration
Issuing date time	Consignment/AdditionalDocument/IssueDateTime	Issuing date of the document	The value should be a date and time to be provided following the EDIFACT 208 format CCYYMMDDHHMMSSZHMM (http://www.unece.org/trade/untid/d13b/tred/tred2379.htm). For Example: 20200820145600+0100 represents 20 August 2020 at 14:56 UTC+01:00
Type, coded	Consignment/AdditionalDocument/TypeCode	Code of the type of the document	The value should be the code of the type of the document from the list Document name code (UN/EDIFACT 1001)
BINARYFILE	Consignment/AdditionalDocument/BinaryFile	The content of the document	
Identifier	Consignment/AdditionalDocument/BinaryFile/ID	Unique identifier of the file representing the document	The value should be an ID identifying the file and it should be unique among all other binary files of the declaration
Title	Consignment/AdditionalDocument/BinaryFile/Title	Title of the document	The value should be the title of the document
Author name	Consignment/AdditionalDocument/BinaryFile/AuthorName	Name of the author of the document	The value should be the first and last name of the author of the document

eTIR field name	Mapping to the XML element (XPath)	Description	Usage
Version	Consignment/AdditionalDocument/BinaryFile/VersionID	Version number of the document	The value should be the version of the document
File name	Consignment/AdditionalDocument/BinaryFile/FileNameText	File name of the document	The value should be the name of the file representing the document, including the extension
URI	Consignment/AdditionalDocument/BinaryFile/URIID	URI of the document	The value should be the Unique Resource Identifier (URI) allowing to access the document instead of relying on a binary object representation
MIME	Consignment/AdditionalDocument/BinaryFile/MIMECode	Code of the MIME type of the file	The value should be one of the MIME types as listed by the IANA organization on the page: http://www.iana.org/assignments/media-types/media-types.xhtml
Encoding	Consignment/AdditionalDocument/BinaryFile/EncodingCode	Code of the encoding algorithm of the file	The value should be the type of encoding algorithm used to encode the file
Character set	Consignment/AdditionalDocument/BinaryFile/CharacterSetCode	Code of the character set of the file	The value should be the character set used in case the file is a text file
Include binary object	Consignment/AdditionalDocument/BinaryFile/IncludedBinaryObjectBinaryObject	Binary representation of the file	The value should be the content of the file represented using the characteristics mentioned in the other attributes (EncodingCode and CharacterSetCode)
Access	Consignment/AdditionalDocument/BinaryFile/Access	Access information of the file	The value should be the information needed to access the file, such as security and download parameters. This is only useful when the file is accessible using the URIID parameter
Description	Consignment/AdditionalDocument/BinaryFile/Description	Description of the document	The value should be the description of the document and explain what it contains
Size	Consignment/AdditionalDocument/BinaryFile/SizeMeasure	Size of the file	The value should be the size of the file. The unit should be defined in the Measure Unit Code attribute and should match one of the values listed in the Measurement unit code (UNECE Recommendation 20)
Hash code	Consignment/AdditionalDocument/BinaryFile/HashCode	Hash value of the file	The value should be the hash code string that resulted from hashing the attached file to be used for file reception validation
Hash code algorithm id	Consignment/AdditionalDocument/BinaryFile/HashCodeAlgorithmIDCode	Code of the hash algorithm	The value should be the short name of the algorithm used to compute the hash value of the file
CONSIGNMENTITEM	Consignment/ConsignmentItem	Class representing the list of details on the items in the consignment	

eTIR field name	Mapping to the XML element (XPath)	Description	Usage
Sequence number	Consignment/ConsignmentItem/SequenceNumeric	Index of the consignment item in the list	The value should be the 1-based index of the consignment item in the list, allowing for quick physical identification upon inspection
ADDITIONALINFORMATION	Consignment/ConsignmentItem/AdditionalInformation	Class representing the list of potential additional information at the consignment item level	
Remarks	Consignment/ConsignmentItem/AdditionalInformation/Content	Remarks on the consignment item	The value should be a text allowing for additional remarks on the consignment item
GOODS	Consignment/ConsignmentItem/Commodity	Class representing the details on the goods	
Description	Consignment/ConsignmentItem/Commodity/CargoDescription	Description of the goods	The value should be a text describing the goods
CLASSIFICATION	Consignment/ConsignmentItem/Commodity/Classification	Class representing the list of classification details of the goods	
Code	Consignment/ConsignmentItem/Commodity/Classification/ID	Identifier of the classification of the goods	The value should be the identifier of the non commercial classification of the goods
Type, coded	Consignment/ConsignmentItem/Commodity/Classification/IdentificationTypeCode	Code of the classification	The value should be the code of the classification from the list Item type identification code (UN/EDIFACT 7143)
CONSIGNEE	Consignment/ConsignmentItem/Consignee	Class representing the potential consignee of the goods	
Name	Consignment/ConsignmentItem/Consignee/Name	Name of the consignee	The value should be the official company name, or the first and last name of the person in case of physical person, to allow for quick identification
Identifier	Consignment/ConsignmentItem/Consignee/ID	Unique identifier of the consignee	The value should be the unique identifier of the consignee
ADDRESS	Consignment/ConsignmentItem/Consignee/Address	Class representing the physical address of the consignee	
City name	Consignment/ConsignmentItem/Consignee/Address/CityName	City name of the physical address of the consignee	The value should be the city name of the physical address of the consignee
Country, coded	Consignment/ConsignmentItem/Consignee/Address/CountryCode	Code of the country of the physical address of the consignee	The value should be the code of the country of the physical address of the consignee from the list Country name code (ISO 3166-1-alpha-2) (https://etir.org/documentation/code-lists#page=38)
Street and number/P.O. Box	Consignment/ConsignmentItem/Consignee/Address/Line	Street name of the physical address of the consignee	The value should be the street name and number (or equivalent) of the physical address of the consignee
Postcode identification	Consignment/ConsignmentItem/Consignee/Address/PostcodeID	Postal/Zip code of the physical address of the consignee	The value should be the postal/ZIP code of the physical address of the consignee

eTIR field name	Mapping to the XML element (XPath)	Description	Usage
└ CONSIGNOR	Consignment/ConsignmentItem/Consignor	Class representing the potential consignor of the goods	
└ Name	Consignment/ConsignmentItem/Consignor/Name	Name of the consignor	The value should be the official company name, or the first and last name of the person in case of physical person, to allow for quick identification
└ Identifier	Consignment/ConsignmentItem/Consignor/ID	Unique identifier of the consignor	The value should be the unique identifier of the consignor
└ ADDRESS	Consignment/ConsignmentItem/Consignor/Address	Class representing the physical address of the consignor	
└ City name	Consignment/ConsignmentItem/Consignor/Address/CityName	City name of the physical address of the consignor	The value should be the city name of the physical address of the consignor
└ Country, coded	Consignment/ConsignmentItem/Consignor/Address/CountryCode	Code of the country of the physical address of the consignor	The value should be the code of the country of the physical address of the consignor from the list (Country name code (ISO 3166-1-alpha-2))
└ Street and number/P.O. Box	Consignment/ConsignmentItem/Consignor/Address/Line	Street name of the physical address of the consignor	The value should be the street name and number (or equivalent) of the physical address of the consignor
└ Postcode identification	Consignment/ConsignmentItem/Consignor/Address/PostcodeID	Postal/Zip code of the physical address of the consignor	The value should be the postal/ZIP code of the physical address of the consignor
└ DELIVERYDESTINATION	Consignment/ConsignmentItem/DeliveryDestination	Class representing the potential party to which the goods should be delivered	
└ Name	Consignment/ConsignmentItem/DeliveryDestination/Name	Name of the delivery destination	The value should be the official company name, or the first and last name of the person in case of physical person, to allow for quick identification.
└ ADDRESS	Consignment/ConsignmentItem/DeliveryDestination/Address	Class representing the physical address of the delivery destination	
└ City name	Consignment/ConsignmentItem/DeliveryDestination/Address/CityName	City name of the physical address of the delivery destination	The value should be the city name of the physical address of the delivery destination
└ Country, coded	Consignment/ConsignmentItem/DeliveryDestination/Address/CountryCode	Code of the country of the physical address of the delivery destination	The value should be the code of the country of the physical address of the delivery destination from the list (Country name code (ISO 3166-1-alpha-2))
└ Street and number/P.O. Box	Consignment/ConsignmentItem/DeliveryDestination/Address/Line	Street name of the physical address of the delivery destination	The value should be the street name and number (or equivalent) of the physical address of the delivery destination
└ Postcode identification	Consignment/ConsignmentItem/DeliveryDestination/Address/PostcodeID	Postal/Zip code of the physical address of the delivery destination	The value should be the postal/ZIP code of the physical address of the delivery destination
└ GOODSMEASURE	Consignment/ConsignmentItem/GoodsMeasure	Class representing the details on the measures of the goods	

eTIR field name	Mapping to the XML element (XPath)	Description	Usage
└ Gross weight	Consignment/ConsignmentItem/GoodsMeasure/GrossMassMeasure	Total gross weight of the goods	The value should be the weight (mass) of goods including packaging but excluding the transport equipment. The unit should be defined in the Measure Unit. Code attribute and should match one of the values listed in the Measurement unit code (UNECE Recommendation 20)
└┐ PACKAGING	Consignment/ConsignmentItem/Packaging	Class representing the list of details on the packaging of the goods	
└ Sequence number	Consignment/ConsignmentItem/Packaging/SequenceNumeric	Index of the packaging in the list	The value should be the 1-based index of the packaging in the list, allowing for quick physical identification upon inspection
└ Marks and numbers	Consignment/ConsignmentItem/Packaging/MarksNumbersID	Packaging marks and numbers	The value should be a text describing the marks and numbers on a transport unit or package
└ Number of packages	Consignment/ConsignmentItem/Packaging/QuantityQuantity	Number of packages	The value should be the number of individual items packaged in such a way that they cannot be divided without first undoing the packing
└ Type, coded	Consignment/ConsignmentItem/Packaging/TypeCode	Code of the packaging type	The value should be the code of the type of packaging from the list Package type description code (UNECE Recommendation 21 Annex VI)
└┐ TRANSPORTEQUIPMENT	Consignment/ConsignmentItem/TransportEquipment	Class representing the transport equipment used for the consignment item	
└ Identification	Consignment/ConsignmentItem/TransportEquipment/ID	Identifier of the transport equipment	The value should be marks (letters and/or numbers) which identify the transport equipment
└┐ UCR	Consignment/ConsignmentItem/UCR	Class representing the Unique Trader Reference	
└┐ Identifier	Consignment/ConsignmentItem/UCR/ID	Unique identifier of the goods	The value should be the unique identifier assigned to goods being subject to cross border transactions
└┐ LOADINGLOCATION	Consignment/LoadingLocation	Class representing the place of loading of the goods	
└ Name	Consignment/LoadingLocation/Name	Name of the loading location	The value should be the name of a seaport, airport, freight terminal, rail station or other place at which goods are loaded onto the means of transport being used for their carriage
└┐ NOTIFYPARTY	Consignment/NotifyParty	Class representing a potential party to be notified	

eTIR field name	Mapping to the XML element (XPath)	Description	Usage
Name	Consignment/NotifyParty/Name	Name of the party to be notified	The value should be the name (first and last name or company) of the party to be notified
Identifier	Consignment/NotifyParty/ID	Unique identifier of the party to be notified	The value should be the unique identifier of the party to be notified
ADDRESS	Consignment/NotifyParty/Address	Class representing the physical address of the party to be notified	
City name	Consignment/NotifyParty/Address/CityName	City name of the physical address of the party to be notified	The value should be the city name of the physical address of the party to be notified
Country, coded	Consignment/NotifyParty/Address/CountryCode	Code of the country of the physical address of the party to be notified	The value should be the code of the country of the physical address of the party to be notified from the list Country name code (ISO 3166-1-alpha-2)
Street and number/P.O. Box	Consignment/NotifyParty/Address/Line	Street name of the physical address of the party to be notified	The value should be the street name and number (or equivalent) of the physical address of the party to be notified
Postcode identification	Consignment/NotifyParty/Address/PostcodeID	Postal/Zip code of the physical address of the party to be notified	The value should be the postal/ZIP code of the physical address of the party to be notified
CUSTOMSOFFICEOFDEPARTURE	Consignment/TransitDeparture	Class representing the customs office where the goods are loaded	
Identifier	Consignment/TransitDeparture/ID	Unique identifier of the customs office of departure	The value should be the unique identifier used of the customs of departure, where the goods are loaded. This identifier is the one registered in the International TIR Data Bank (ITDB) for the customs office
CUSTOMSOFFICEOFDESTINATION	Consignment/TransitDestination	Class representing the customs office where the goods are unloaded	
Identifier	Consignment/TransitDestination/ID	Unique identifier of the customs office of destination	The value should be the unique identifier used of the customs of destination, where the goods are unloaded. This identifier is the one registered in the International TIR Data Bank (ITDB) for the customs office
TRANSPORTMEANS	Consignment/TransitTransportMeans	Class representing the list of the means of transport for the consignment	
Identifier	Consignment/TransitTransportMeans/ID	Unique identifier of the transport means	The value should be the unique identifier of the means of transport used for the transit
Type, coded	Consignment/TransitTransportMeans/TypeCode	Code of the means of transport	The value should be the code of the means of transport from the list Transport means description code (UNECE Recommendation 28)

eTIR field name	Mapping to the XML element (XPath)	Description	Usage
Nationality, coded	Consignment/TransitTransportMeans/RegistrationNationalityCode	Nationality of the means of transport	The value should be the code of the country for the nationality of the means of transport from the list Country name code (ISO 3166-1-alpha-2)
Conveyance reference number	Consignment/TransitTransportMeans/JourneyID	Unique identifier of the journey	The value should be the unique identifier of the journey of a means of transport (for example voyage number, flight number or trip number)
Sequence number	Consignment/TransitTransportMeans/SequenceNumeric	Index of the transport means in the list	The value should be the 1-based index of the transport means in the list
COUNTRYOFROUTING	Consignment/TransitTransportMeans/Itinerary	Class representing the list of countries of the itinerary of the consignment	
Sequence number	Consignment/TransitTransportMeans/Itinerary/SequenceNumeric	Index of the country in the list	The value should be the 1-based index of the country in the list representing the itinerary of the consignment
Country, coded	Consignment/TransitTransportMeans/Itinerary/RoutingCountryCode	Code of the country	The value should be the code of the country from the list Country name code (ISO 3166-1-alpha-2)
TRANSPORTEQUIPMENT	Consignment/TransportEquipment	Class representing the list of the transport equipment used for the consignment	
Sequence number	Consignment/TransportEquipment/SequenceNumeric	Index of the transport equipment in the list	The value should be the 1-based index of the transport equipment in the list
Size and type, coded	Consignment/TransportEquipment/CharacteristicCode	Code of the transport equipment	The value should be the code of the transport equipment (specifying its characteristics) from the list Equipment size and type description code (UN/EDIFACT 8155)
Identifier	Consignment/TransportEquipment/ID	Identifier of the transport equipment	The value should be marks (letters and/or numbers) which identify the transport equipment
CERTIFICATEOFAPPROVAL	Consignment/TransportEquipment/AdditionalDocument	Class representing the details of the certificate of approval of the transport equipment	
Number	Consignment/TransportEquipment/AdditionalDocument/ID	Unique identifier of the certificate of approval	The value should be the unique identifier of the certificate of approval
Issuing date time	Consignment/TransportEquipment/AdditionalDocument/IssueDateTime	Issuing date of the document	The value should be a date to be provided following the EDIFACT 102 format CCYYMMDD (https://www.unece.org/trade/untdid/d00a/tred/tred2379.htm). For Example: 20200820 represents 20 August 2020
Type, coded	Consignment/TransportEquipment/AdditionalDocument/TypeCode	Code of the type of file	The value should be the code of the type of the document from the list Document name code (UN/EDIFACT 1001)

eTIR field name	Mapping to the XML element (XPath)	Description	Usage
↳ BINARYFILE	Consignment/TransportEquipment/AdditionalDocument/BinaryFile	The content of the document	
↳ Identifier	Consignment/TransportEquipment/AdditionalDocument/BinaryFile/ID	Unique identifier of the file representing the document	The value should be an ID identifying the file and it should be unique among all other binary files of the declaration
↳ Title	Consignment/TransportEquipment/AdditionalDocument/BinaryFile/Title	Title of the document	The value should be the title of the document
↳ Author name	Consignment/TransportEquipment/AdditionalDocument/BinaryFile/AuthorName	Name of the author of the document	The value should be the first and last name of the author of the document
↳ Version	Consignment/TransportEquipment/AdditionalDocument/BinaryFile/VersionID	Version number of the document	The value should be the version of the document
↳ File name	Consignment/TransportEquipment/AdditionalDocument/BinaryFile/FileNameText	File name of the document	The value should be the name of the file representing the document, including the extension
↳ URI	Consignment/TransportEquipment/AdditionalDocument/BinaryFile/URIID	URI of the document	The value should be the Unique Resource Identifier (URI) allowing to access the document instead of relying on a binary object representation
↳ MIME	Consignment/TransportEquipment/AdditionalDocument/BinaryFile/MIMECode	Code of the MIME type of the file	The value should be one of the MIME types as listed by the IANA organization on the page: http://www.iana.org/assignments/media-types/media-types.xhtml
↳ Encoding	Consignment/TransportEquipment/AdditionalDocument/BinaryFile/EncodingCode	Code of the encoding algorithm of the file	The value should be the type of encoding algorithm used to encode the file
↳ Character set	Consignment/TransportEquipment/AdditionalDocument/BinaryFile/CharacterSetCode	Code of the character set of the file	The value should be the character set used in case the file is a text file
↳ Include binary object	Consignment/TransportEquipment/AdditionalDocument/BinaryFile/IncludedBinaryObjectBinaryObject	Binary representation of the file	The value should be the content of the file represented using the characteristics mentions in the other attributes (EncodingCode and CharacterSetCode)
↳ Access	Consignment/TransportEquipment/AdditionalDocument/BinaryFile/Access	Access information of the file	The value should be the information needed to access the file, such as security and download parameters. This is only useful when the file is accessible using the URIID parameter
↳ Description	Consignment/TransportEquipment/AdditionalDocument/BinaryFile/Description	Description of the document	The value should be the description of the document and explain what it contains
↳ Size	Consignment/TransportEquipment/AdditionalDocument/BinaryFile/SizeMeasure	Size of the file	The value should be the size of the file. The unit should be defined in the Measure Unit. Code attribute and should match one of the values listed in the Measurement unit code (UNECE Recommendation 20)

eTIR field name	Mapping to the XML element (XPath)	Description	Usage
Hash code	Consignment/TransportEquipment/AdditionalDocument/BinaryFile/HashCode	Hash value of the file	The value should be the hash code string that resulted from hashing the attached file to be used for file reception validation
Hash code algorithm id	Consignment/TransportEquipment/AdditionalDocument/BinaryFile/HashCodeAlgorithmIDCode	Code of the hash algorithm	The value should be the short name of the algorithm used to compute the hash value of the file
SEAL	Consignment/TransportEquipment/Seal	Class representing the list of seals affixed to the transport equipment	/!\ In the context of the eTIR specifications v4.3, this element shall not be provided /!\
Sequence number	Consignment/TransportEquipment/Seal/SequenceNumeric	Index of the seal in the list	/!\ In the context of the eTIR specifications v4.3, this element shall not be provided /!\
Seal number	Consignment/TransportEquipment/Seal/ID	Unique identifier of the seal	/!\ In the context of the eTIR specifications v4.3, this element shall not be provided /!\
Seal type, coded	Consignment/TransportEquipment/Seal/TypeCode	Code of the type of seal	/!\ In the context of the eTIR specifications v4.3, this element shall not be provided /!\
GUARANTEE	ObligationGuarantee	Class representing the guarantee of this TIR transport	
Reference	ObligationGuarantee/ReferenceID	Unique identifier of the guarantee	The value should be the unique identifier of the guarantee for this TIR transport
HOLDER	Principal	Class representing the TIR Carnet holder (transporter) of this transport	
Name	Principal/Name	Name of the TIR Carnet holder	The value should be the official company name, or the first and last name of the person in case of physical person as recorded in the International TIR Data Bank (ITDB), to allow for quick identification
Identifier	Principal/ID	Unique identifier of the TIR Carnet holder	The value should be the unique identifier of the TIR Carnet holder as recorded in the International TIR Data Bank (ITDB)
ADDRESS	Principal/Address	Class representing the physical address of the TIR Carnet holder	
City name	Principal/Address/CityName	City name of the physical address of the TIR Carnet holder	The value should be the city name of the physical address of the TIR Carnet holder
Country, coded	Principal/Address/CountryCode	Code of the country of the physical address of the TIR Carnet holder	The value should be the code of the country of the physical address of the TIR Carnet holder from the list Country name code (ISO 3166-1-alpha-2)
Street and number/P.O. Box	Principal/Address/Line	Street name of the physical address of the TIR Carnet holder	The value should be the street name and number (or equivalent) of the physical address of the TIR Carnet holder
Postcode identification	Principal/Address/PostcodeID	Postal/Zip code of the physical address of the TIR Carnet holder	The value should be the postal/ZIP code of the physical address of the TIR Carnet holder



When reading the values of the second columns for both tables, note that the "Declaration/" XML base element has been removed to improve the readability, as it is repeated on every line.

6.3.4. Referred code lists

The following code lists are referred to in the field lists and should be considered when sending the message:

- [CL01](#) - Equipment size and type description code (UN/EDIFACT 8155)
- [CL02](#) - Party role code (UN/EDIFACT 3035)
- [CL03](#) - Item type identification code (UN/EDIFACT 7143)
- [CL04](#) - Country name code (ISO 3166-1-alpha-2)
- [CL05](#) - Transport means description code (UNECE Recommendation 28)
- [CL06](#) - Document name code (UN/EDIFACT 1001)
- [CL07](#) - Package type description code (UNECE Recommendation 21 Annex VI)
- [CL08](#) - Seal type code (eTIR)
- [CL16](#) - Message function code (UN/EDIFACT 1225)
- [CL17](#) - Amendment type code (eTIR)
- [CL26](#) - Message types (eTIR)



All code lists are described in the [eTIR code lists document](#).

6.3.5. Conditions and rules

The following rules of the [eTIR rules list](#) are referred to in the field lists and should be considered in the message:

- **R001:** *Each country of routing shall have a unique sequence number. They shall be numbered from 1 to the number of countries through which the means of transport travels and represent the order in which countries are travelled, from departure to destination.*
- **R002:** *Each transport means shall have a unique sequence number. They shall be numbered from 1 to the number of transport means involved in the transport and represent the order in which transport means are used, from departure to destination.*
- **R003:** *Re-use a sequence number to indicate that a seal has been replaced.*
- **R004:** *Use new sequence number only to mention additional seals.*
- **R005:** *Indicate that a seal has been removed and not replaced with an "X" in the "seals number" field of the transport equipment sequence corresponding to the removed seal.*
- **R008:** *The first occurrence of GOODS.CLASSIFICATION must be of type "HS".*

6.3.6. How the national customs system should process the information received in the advance amendment data

Upon reception, the **E11 - Advance amendment data** message should be validated and any error found should be returned in the **E12 - Advance amendment data results** message.

If no error was found, the information of the advance amendment data should be validated by the customs authorities. If it is refused, the "Rejection date" of the **E12 - Advance amendment data results** message should be filled in, and the error code 502 should be sent back. If the information of the advance amendment data is accepted for now, it should be stored in the national customs system and a national reference should be issued to represent it. In the **E12 - Advance amendment data results** message, the "Acceptance date" should be filled as well as the national reference.

This national reference will be requested by the customs officer to the TIR Carnet holder when he or she present the goods along with the road vehicle, the combination of vehicles or the container at the relevant customs office in order to amend the declaration data (See the **I7 - Record declaration data** message).

6.3.7. Example

The example below shows the XML data to be sent via POST method to the eTIR international system [endpoint URL](#) to request an amendment to the TIR transport related to the previous **I9 - Start TIR operation** message (message ID: **b90e18ab-4595-4f64-bfac-e063fdb0b25b**) in order to add a new consignment and a new loading location. This advance amendment data was issued on **10/04/2021 at 11:30 UTC+4** by the TIR Carnet holder **GEO/054/9890** and is related to the TIR transport guarantee **XF95001234**. It describes the additional consignment (**change code: 01 - Addition**) of 8 tons of "COVID-19 Diagnostic Test base materials" to be loaded in Georgia from the Customs office GE0732 and which should be delivered (through Turkey) to the same customs office of destination in Iran than the first consignment: IR10210.

E11 - Advance amendment data request message

```
<?xml version="1.0" encoding="UTF-8"?>
<soap:Envelope xmlns:cus="etir:v4.3:advanceData" xmlns:soap="http://www.w3.org/2003/05/soap-envelope"
  xmlns:urn="etir:E11:v4.3" xmlns:urn1="etir:MetaData_DS:v4.3" xmlns:md="etir:DocumentMetaData:v4.3">
  <soap:Header xmlns:wsa="http://www.w3.org/2005/08/addressing">
    (...)
    <wsa:Action>etir:v4.3:advanceData/advanceAmendmentData</wsa:Action>
    <wsa:MessageID>uuid:17e7c1f4-3d86-4bf4-8bce-bf2968fe861d</wsa:MessageID>
    (...)
  </soap:Header>
  <soap:Body wsu:Id="id-15E3249777A4C3F99C1615394084621224"
    xmlns:wsu="http://docs.oasis-open.org/wss/2004/01/oasis-200401-wss-wssecurity-utility-1.0.xsd">
    <cus:advanceAmendmentData>
      <urn:DocumentMetadata>
        <md:ResponsibleAgencyCode>AJ</md:ResponsibleAgencyCode>
        <md:AgencyAssignedCustomizationCode>1</md:AgencyAssignedCustomizationCode>
        <md:AgencyAssignedCustomizationVersionCode>1</md:AgencyAssignedCustomizationVersionCode>
        <md:CommunicationMetaData>
          <md:PreparationDateTime formatCode="208">20201122113346+0200</md:PreparationDateTime>
          <md:Recipient>
            <md:ID>eTIR international system</md:ID>
          </md:Recipient>
          <md:Sender>
            <md:ID>recipientID</md:ID>
          </md:Sender>
        </md:CommunicationMetaData>
      <urn:Declaration>
        <urn:FunctionCode>4</urn:FunctionCode>
        <urn:ID>2b0926fd-7ade-4b09-9c2e-4ce2684aa18c</urn:ID>
        <urn:IssueDateTime formatCode="208">202104103046+0400</urn:IssueDateTime>
        <urn:TypeCode>E11</urn:TypeCode>
        <urn:Amendment>
          <urn:ChangeReasonCode>01</urn:ChangeReasonCode>
          <urn:Pointer>
            <urn:SequenceNumeric>1</urn:SequenceNumeric>
            <urn:Location>/Declaration/Consignment</urn:Location>
          </urn:Pointer>
        </urn:Amendment>
      <urn:Consignment>
        <urn1:SequenceNumeric>1</urn1:SequenceNumeric>
        <urn1:HeavyOrBulkyGoodsIndicator>0</urn1:HeavyOrBulkyGoodsIndicator>
        <urn1:ConsignmentItem>
          <urn1:SequenceNumeric>1</urn1:SequenceNumeric>
          <urn1:AdditionalInformation>
            <urn1:Content languageID="EN">Base materials used in clinical laboratories for In
```

Vitro

```

      Diagnosis
    </urn1:Content>
  </urn1:AdditionalInformation>
<urn1:Commodity>
  <urn1:CargoDescription languageID="EN">COVID-19 Diagnostic Test base materials
  </urn1:CargoDescription>
  <urn1:Classification>
    <urn1:ID>9028.80</urn1:ID>
    <urn1:IdentificationTypeCode>HS</urn1:IdentificationTypeCode>
  </urn1:Classification>
</urn1:Commodity>
<urn1:Consignee>
  <urn1:ID>CE368324456</urn1:ID>
</urn1:Consignee>
<urn1:Consignor>
  <urn1:ID>C0654834578</urn1:ID>
</urn1:Consignor>
<urn1:DeliveryDestination>
  <urn1:Name>Tehran Fictitious Hospital</urn1:Name>
  <urn1:Address>
    <urn1:CityName>Tehran</urn1:CityName>
    <urn1:CountryCode>IR</urn1:CountryCode>
    <urn1:Line>Shoosh St</urn1:Line>
    <urn1:PostcodeID>1230</urn1:PostcodeID>
  </urn1:Address>
</urn1:DeliveryDestination>
<urn1:GoodsMeasure>
  <urn1:GrossMassMeasure unitCode="KGM">8000</urn1:GrossMassMeasure>
</urn1:GoodsMeasure>
<urn1:Packaging>
  <urn1:TypeCode>V0</urn1:TypeCode>
</urn1:Packaging>
<urn1:TransportEquipment>
  <urn1:ID>TE1</urn1:ID>
</urn1:TransportEquipment>
<urn1:UCR>
  <urn1:ID>UCR</urn1:ID>
</urn1:UCR>
</urn1:ConsignmentItem>
<urn1>LoadingLocation>
  <urn1:Name languageID="EN">Fictitious Factory</urn1:Name>
</urn1>LoadingLocation>
<urn1:TransitDeparture>
  <urn1:ID>GE0732</urn1:ID>
</urn1:TransitDeparture>
<urn1:TransitDestination>
  <urn1:ID>IR10210</urn1:ID>
</urn1:TransitDestination>
<urn1:TransitTransportMeans>
  <urn1:ID>CM-875-KZ</urn1:ID>
  <urn1:TypeCode>33</urn1:TypeCode>
  <urn1:RegistrationNationalityCode>GE</urn1:RegistrationNationalityCode>
  <urn1:JourneyID>J-12745124</urn1:JourneyID>
  <urn1:Itinerary>
    <urn1:SequenceNumeric>1</urn1:SequenceNumeric>
    <urn1:RoutingCountryCode>GE</urn1:RoutingCountryCode>
  </urn1:Itinerary>
  <urn1:Itinerary>
    <urn1:SequenceNumeric>2</urn1:SequenceNumeric>
    <urn1:RoutingCountryCode>TR</urn1:RoutingCountryCode>
  </urn1:Itinerary>
  <urn1:Itinerary>
    <urn1:SequenceNumeric>3</urn1:SequenceNumeric>
    <urn1:RoutingCountryCode>IR</urn1:RoutingCountryCode>
  </urn1:Itinerary>
</urn1:TransitTransportMeans>

```

```

<urn1:TransportEquipment>
  <urn1:SequenceNumeric>1</urn1:SequenceNumeric>
  <urn1:CharacteristicCode>CC1</urn1:CharacteristicCode>
  <urn1:ID>TE1</urn1:ID>
  <urn1:AdditionalDocument>
    <urn1:ID>CoA-4873218</urn1:ID>
    <urn1:IssueDateTime formatCode="208">20210410094546+0400</urn1:IssueDateTime>
    <urn1:TypeCode>CoA</urn1:TypeCode>
    <urn1:BinaryFile>
      <urn1:ID>1</urn1:ID>
      <urn1:Title>Certificate of approval</urn1:Title>
      <urn1:AuthorName>Georgian customs</urn1:AuthorName>
      <urn1:VersionID>1</urn1:VersionID>
      <urn1:URIID>https://my.server/fileFolder/CoA.pdf</urn1:URIID>
      <urn1:Access>Password:mysecurepassword</urn1:Access>
      <urn1:Description>The scan copy of the certificate of approval of the TIR truck
      </urn1:Description>
      <urn1:SizeMeasure unitCode="4L">2.457</urn1:SizeMeasure>
      <urn1:TypeCode>pdf</urn1:TypeCode>
      <urn1:HashCode>4b8c7b76204678a76d6a8ab83f5563d0</urn1:HashCode>
      <urn1:HashCodeAlgorithmIDCode>MD5</urn1:HashCodeAlgorithmIDCode>
    </urn1:BinaryFile>
  </urn1:AdditionalDocument>
</urn1:TransportEquipment>
</urn:Consignment>
<urn:ObligationGuarantee>
  <urn:ReferenceID>XF95001234</urn:ReferenceID>
</urn:ObligationGuarantee>
<urn:Principal>
  <urn:ID>GEO/054/9890</urn:ID>
</urn:Principal>
</urn:Declaration>
</urn:DocumentMetadata>
</cus:advanceAmendmentData>
</soap:Body>
</soap:Envelope>
    
```



Some field original contents have been shortened (...) in this document for the sake of readability, in particular the whole **header/security** content that is described in the [eTIR web services introduction document](#).



Other examples of the E11 - Advance amendment data request message and of the E12 - Advance amendment data results response message are available in the [More examples](#) annex of this document illustrating other types of amendment use cases.

6.4. "E12 - Advance amendment data results" response message

6.4.1. Description

The **E12 - Advance amendment data results** message is a response to the **E11 - Advance amendment data** message. It confirms the reception of the advance (declaration) amendment information necessary to the next TIR operation.

The XSD file related to the **E12 - Advance amendment data results** message is available at the following URL: https://wiki.unece.org/download/attachments/106299941/WCO_eTIR_E12_1.xsd.

6.4.2. Field details



Kindly note that the metadata fields have been removed from this table has been removed to improve the readability, as it is part of every eTIR message. You can find the details about metadata in the [eTIR introduction document](#) dedicated section.

eTIR field name	Mapping to the XML element (XPath)	Status	Cardinality	Format	Code lists	Conditions	Rules
MESSAGE							
└ Message function, coded	Function	R	1..1	n..2	CL16		
└ Original Message Identifier	FunctionalReferenceID	R	1..1	an..70			
└ Message identifier	ID	R	1..1	an..70			
└ Type, coded	TypeCode	R	1..1	an..3	CL26		
└ ADVANCEAMENDMENTDATA	Declaration	R	1..1				
└ └ Acceptance date time	Declaration/AcceptanceDateTime	D	0..1	an..35		C009	
└ └ National reference	Declaration/ID	R	1..1	an..70			
└ └ Rejection date time	Declaration/RejectionDateTime	D	0..1	an..35		C009	
└ ERROR	Error	D	0..*			C006	
└ └ Error, coded	Error/ValidationCode	R	1..1	an..8	CL99		
└ └ POINTER	Error/Pointer	R	1..*				
└ └ └ Sequence number	Error/Pointer/SequenceNumeric	R	1..1	n..5			
└ └ └ Location	Error/Pointer/Location	R	1..1	an..512			

6.4.3. Field descriptions & usages



Kindly note that the metadata fields have been removed from this table has been removed to improve the readability, as it is part of every eTIR message. You can find the details about metadata in the [eTIR introduction document](#) dedicated section.

eTIR field name	Mapping to the XML element (XPath)	Description	Usage
MESSAGE			
Message function, coded	Function	Code describing the function of the message	The value should be "44" (Accepted without reserves) if the request was processed correctly. If at least one error is described in this message or if the content could not be accepted, the value should be "27" (Not accepted)
Original Message Identifier	FunctionalReferenceID	Unique identifier of the request message associated with this response	The value should be the one mentioned in the message identifier field of the request message (E11)
Message identifier	ID	Unique identifier of the message	The value should be a Globally Unique Identifier (GUID) as detailed in the dedicated section of the introduction document
Type, coded	TypeCode	Code of the message type	The value should be set to "E12"
ADVANCEAMENDMENTDATA	Declaration	Class representing the declaration data as accepted by customs	
Acceptance date time	Declaration/AcceptanceDateTime	Date of acceptance of the advance TIR data by Customs Authorities	The value should be a date and time to be provided following the EDIFACT 208 format CCYYMMDDHHMMSSZHMM (http://www.unece.org/trade/untdid/d13b/tred/tred2379.htm). For Example: 20200820145600+0100 represents 20 August 2020 at 14:56 UTC+01:00.
National reference	Declaration/ID	National reference of the advance amendment data	The value should be the national reference (stored in the national customs system) of the advance amendment data sent by the TIR Carnet holder. This reference will be used by the TIR Carnet holder when presenting the goods and the vehicle to the relevant customs office.
Rejection date time	Declaration/RejectionDateTime	Date of rejection of the advance TIR data by Customs Authorities	The value should be a date and time to be provided following the EDIFACT 208 format CCYYMMDDHHMMSSZHMM (http://www.unece.org/trade/untdid/d13b/tred/tred2379.htm). For Example: 20200820145600+0100 represents 20 August 2020 at 14:56 UTC+01:00.

eTIR field name	Mapping to the XML element (XPath)	Description	Usage
↳ ERROR	Error	Class representing the list of errors, if any	
└ Error, coded	Error/ValidationCode	Code of the error type	The value should be the code of the error from the list Error code (eTIR)
↳ POINTER	Error/Pointer	Class representing the pointer to the erroneous field, if any	
└ Sequence number	Error/Pointer/SequenceNumeric	Index of the error in the list	The value should be the 1-based index of the error in the list
└ Location	Error/Pointer/Location	Location of the erroneous field	The value should be the location of the erroneous field following the XPath syntax. Additional details regarding the location of the fields per error code are available on the page dedicated to errors



When reading the values of the second columns for both tables, note that the "Response/" XML base element has been removed to improve the readability, as it is repeated on every line.

6.4.4. Referred code lists

The following code lists are referred to in the field lists and should be considered when sending the message:

- [CL16](#) - Message function code (UN/EDIFACT 1225)
- [CL26](#) - Message types (eTIR)
- [CL99](#) - Error code (eTIR)



All code lists are described in the [eTIR code lists document](#).

6.4.5. Conditions and rules

The following condition(s) of the [eTIR conditions list](#) are referred to in the field lists and should be considered in the message:

- **C006:** IF (MESSAGE.Message function, coded) = '6' OR '11' OR '44' OR '45'
THEN EMPTY (ERROR)
ELSE IF (MESSAGE.Message function, coded) = '10' OR '27'
THEN NOT EMPTY (ERROR)
- **C009:** IF (MESSAGE.Message function, coded) = '44'
THEN NOT EMPTY (ADVANCEAMENDMENTDATA.Acceptance date) AND EMPTY
(ADVANCEAMENDMENTDATA.Rejection date)
ELSE IF (MESSAGE.Message function, coded) = '27'
THEN NOT EMPTY (ADVANCEAMENDMENTDATA.Rejection date) AND EMPTY
(ADVANCEAMENDMENTDATA.Acceptance date)

6.4.6. How to use response data in the TIR Carnet holder information systems

If one or more errors are reported in the **E12 - Advance amendment data results** message, the advance amendment data has not been registered in the national customs system and this issue should be investigated and corrected before a new tentative can be tried.

If there are no errors returned in the **E12 - Advance amendment data results** message, the national reference of the advance amendment data should be stored in the TIR Carnet holder information systems to be presented to the relevant customs office (depending on the kind of amendment) along with the goods and the road vehicle, the combination of vehicles or the container, to amend the declaration of the TIR transport.

6.4.7. Applicable error codes

As the eTIR international system may return error codes, the [eTIR web services introduction document](#) contains a dedicated section describing how and where to find those error codes in the response messages. Find below the list of error codes that may be returned as part of the **E12 - Advance amendment data results** response message as well as the recommended actions to address them:

100 - Invalid message

Kindly check the message itself and its format as it is not recognized by the eTIR international system. Kindly contact the eTIR service desk to send the content of the message communicated, the timestamps and the steps to reproduce this issue in order to address it.

101 - Missing field

Kindly check the message parameters, in particular the parameters marked as mandatory in the message description section of this document, and make sure that all mandatory parameters are

part of the message.

102 - Invalid domain for the value

Kindly check the coded parameter, its values and corresponding code lists. Make sure that each coded parameter is using one of the values of the corresponding code list.

103 - Malformed date

Kindly check the date parameters and their format. Make sure that each date format has the format indicated and that the value follows the format/pattern.

104 - Not an integer

Kindly check the integer parameters. Make sure that each integer parameter has a value that can successfully be casted as an integer.

105 - Field value length exceeded

Kindly check the parameter value lengths. Make sure that each parameter length does not exceed the max length as defined in the documentation in the Format column.

106 - Invalid pattern

Kindly check the pattern of the parameter value as it does not match the requirements set for this attribute in XML Schema Definition of the message.

107 - Invalid field

Kindly check the element specified as it may not follow the order defined in the XML Schema Definition of the message.

108 - Missing XML attribute

Kindly check that all XML tags contain their required attribute, in particular all dates should contain the attribute formatCode to specify the format in which the date is sent.

109 - Invalid XML attribute

Kindly check that all XML tag attribute values follow the specified code list, in particular the attribute formatCode for dates can only be either '102' or '208'.

151 - Condition C001 failure

Kindly check the parameters constrained by the condition [C001] and make sure their values respect:

```
IF EMPTY (PARTY.code)
THEN NOT EMPTY (PARTY.name , PARTY.ADDRESS).
```

152 - Condition C002 failure

Kindly check the parameters constrained by the condition [C002] and make sure their values respect:

```
IF (PACKAGING.Type, coded) =
"VQ", "VG", "VL", "VY", "VR" OR "VO"
THEN OPTIONAL ( PACKAGING.Marks and numbers )
AND EMPTY ( PACKAGING.Number of packages )
ELSE IF ( PACKAGING.Type, coded ) = "NE", "NF" OR "NG"
THEN OPTIONAL ( PACKAGING.Marks and numbers )
AND NOT EMPTY ( PACKAGING.Number of packages )
ELSE NOT EMPTY ( PACKAGING.Marks and numbers )
AND NOT EMPTY ( PACKAGING.Number of packages ).
```

153 - Condition C003 failure

Kindly check the parameters constrained by the condition [C003] and make sure their values respect:

```
IF (CONSIGNMENT.Heavy or bulky goods indicator) = FALSE  
THEN NOT EMPTY (TRANSPORTEQUIPMENT)  
ELSE EMPTY (TRANSPORTEQUIPMENT).
```

154 - Condition C004 failure

Kindly check the parameters constrained by the condition [C004] and make sure their values respect:

```
IF EMPTY (GOODS.CLASSIFICATION) OR (GOODS.CLASSIFICATION.Type) <> 'HS'  
THEN NOT EMPTY (GOODS.Description).
```

155 - Condition C005 failure

Kindly check the parameters constrained by the condition [C005] and make sure their values respect:

```
IF (CONSIGNMENT.Heavy or bulky goods indicator = FALSE AND TRANSPORTMEANS.Size and type  
identification = 14, 17, 42)  
THEN NOT EMPTY (TRANSPORTEQUIPMENT.CERTIFICATEOFAPPROVAL)  
ELSE EMPTY (TRANSPORTEQUIPMENT.CERTIFICATEOFAPPROVAL).
```

158 - Condition C008 failure

Kindly check the parameters constrained by the condition [C008] and make sure their values respect:

```
IF (MESSAGE.Message function, coded) = '4'  
THEN NOT EMPTY (AMENDMENT, GUARANTEE, HOLDER)  
ELSE IF (MESSAGE.Message function, coded) = '9'  
THEN EMPTY (AMENDMENT) AND NOT EMPTY (CONSIGMENT, GUARANTEE, HOLDER).
```

200 - Invalid State

Kindly check the state of the referred object (transport, guarantee, ...) and make sure it is consistent with the eTIR international system requested web service called.

213 - Operation not yet started

This message tries to perform an operation on a TIR operation which should be started and that is not yet started. Make sure that this message is sent in the right order and verify the values set in its parameters.

300 - Invalid Operation

Kindly check the message content as it triggered a technical error in the eTIR international system but this one could not identify the source of the issue.

301 - guarantee not found

Kindly check the value of the guarantee reference ID in the message and make sure it matches the value received in previous messages.

302 - guarantee chain not found

Kindly check the value of the guarantee chain ID in the message and make sure it matches the value received in previous messages.

303 - guarantee type not found

Kindly check the value of the guarantee type in the message and make sure it belongs to the [Guarantee type code \(eTIR\) code list](#), and that it matches the value received in previous messages.

304 - Customs office not found

Kindly check the format and value of the customs office ID in the message and make sure it matches the value received in previous messages. If it does, kindly check the existence of the customs office and its status using ITDB web service or ITDB web application.

305 - Country not found

Kindly check the value of the country code in the message and make sure it matches the value received in previous messages and that it belongs to the [Country name code \(ISO 3166-1-alpha-2\) code list \(CL04\)](#).

308 - Forward information not found

Kindly check that the advance data submitted is correct. If the error persists, please contact the eTIR service desk (see [Support and contact](#)) to send the content of the message communicated, the timestamps and the steps to reproduce this issue in order to address it.

320 - Holder/guarantee mismatch

Kindly check the format and value of the TIR carnet holder in the message and make sure it matches the value received in previous messages. If it does, kindly check the existence of the holder and its status using either eTIR I3 - Get holder information message, ITDB dedicated web services or ITDB web application.

333 - Declaration reference not found

Kindly check the reference ID of the advance data message that you want to cancel. Note that if the previous message was sent directly to the national customs systems, it cannot be cancelled using the eTIR international system forwarding mechanism.

334 - Declaration already cancelled

Kindly check the reference ID of the advance data you want to cancel. The reference ID provided may have already been canceled.

400 - eTIR internal errors

Kindly contact eTIR support (see [Support and contact](#)) to send the content of the message communicated, the timestamps and the steps to reproduce this issue in order to address it.

500 - Customs declaration processing error

Kindly contact the related customs authorities to request additional information on the refusal of the advance data.

502 - Advance amendment data not accepted

Kindly review the content of the advance TIR data amendment as some information could not be accepted by the customs authorities. If you cannot find the cause of the refusal, please contact them to request additional information on the refusal of the advance TIR data.



The full list of error codes can be found on the [dedicated error code list web page](#).

6.4.8. Example

The example below shows the XML data of the **E12 - Advance amendment data results** message received in response to the POST of the **E11 - Advance amendment data** message. This response message (Function code **44 - Accepted without reserves**) of the type **E12**, containing no error codes, describes a positive acknowledgment of the recording of all information required to begin a TIR transport related to the declaration **LKT5001234-4537728** on the date of **10/04/2021** at **11:31 UTC+4** by the national customs systems.



It is important to understand that the absence of error in the **E12 - Advance amendment data results** response message is the key indicator to reflect that the TIR transport declaration contains no errors. However, it is also important to check the function code as, in the case of this eTIR response message, the function code **27 - Not accepted** may be used for 2 reasons: either because customs authorities refused the declaration (then the error code 502 will be mentioned in the ERROR section of the response), or another error was returned.

E12 - Advance amendment data results response message

```
<?xml version="1.0" encoding="UTF-8"?>
<s:Envelope xmlns:s="http://www.w3.org/2003/05/soap-envelope">
  <s:Header>
    (...)
    <Action xmlns="http://www.w3.org/2005/08/addressing">etir:v4.3:toCustoms/advanceAmendmentData</Action>
    <MessageID xmlns="http://www.w3.org/2005/08/addressing">d0bb6fc4-13f2-4be6-ae62-29ca5cb99f06</MessageID>
    (...)
  </s:Header>
  <s:Body wsu:Id="id-06c672e2-a7c2-41e3-b50b-11803e39f6a7"
    xmlns:wsu="http://docs.oasis-open.org/wss/2004/01/oasis-200401-wss-wssecurity-utility-1.0.xsd">
    <ns2:advanceAmendmentDataResults xmlns:ns2="etir:v4.3:advanceData" xmlns:md="etir:DocumentMetaData:v4.3"
      xmlns:ns8="etir:E12:v4.3">
      <ns8:DocumentMetadata>
        <md:ResponsibleAgencyCode>AJ</md:ResponsibleAgencyCode>
        <md:AgencyAssignedCustomizationCode>1</md:AgencyAssignedCustomizationCode>
        <md:AgencyAssignedCustomizationVersionCode>1</md:AgencyAssignedCustomizationVersionCode>
        <md:CommunicationMetadata>
          <md:PreparationDateTime formatCode="208">20201122113346+0200</md:PreparationDateTime>
          <md:Recipient>
            <md:ID>senderID</md:ID>
          </md:Recipient>
          <md:Sender>
            <md:ID>recipientID</md:ID>
          </md:Sender>
        </md:CommunicationMetadata>
      </ns8:DocumentMetadata>
      <ns8:Response>
        <ns8:FunctionCode>44</ns8:FunctionCode>
        <ns8:FunctionalReferenceID>2b0926fd-7ade-4b09-9c2e-4ce2684aa18c</ns8:FunctionalReferenceID>
        <ns8:ID>0f8487a7-b7eb-4462-8905-871070047afa</ns8:ID>
        <ns8:TypeCode>E12</ns8:TypeCode>
        <ns8:Declaration>
          <ns8:AcceptanceDateTime formatCode="208">20210410113100+0400</ns8:AcceptanceDateTime>
          <ns8:ID>LKT5001234-4537728</ns8:ID>
        </ns8:Declaration>
      </ns8:Response>
    </ns2:advanceAmendmentDataResults>
  </s:Body>
</s:Envelope>
```



Some field original contents have been shortened (...) in this document for the sake of readability, in particular the whole **header/security** content that is described in the [eTIR web services introduction document](#).

7. Fallback procedures

In the event that the E11 - **Advance amendment data** message could not be sent after several attempts or if no E12 - **Advance amendment data results** message was received in response, we recommend the TIR Carnet holder team to contact eTIR service desk ([Support and contact](#)).

Also note that the functional fallback procedures can be found in the [Approved amendments to the eTIR conceptual, functional and technical documentation](#).

8. Support and contact

Kindly note that in the context of the interconnections projects by TIR Carnet holders, the eTIR service desk stands ready to assist their IT teams while interconnecting their information systems to the eTIR international system. Also, in case of questions or issues related to this document or to the eTIR international system, you can use the contact details below (contacts by email should be preferred).

Organization United Nations Economic Commission For Europe
TIR secretariat
Palais des Nations,
1211 Geneva 10, Switzerland

Contact Email: etir@un.org
Phone: +41 (0)22 917 55 06

9. Annexes

9.1. Version history

Date	Author	Version	Notes	eTIR specification version reference
11/06/2021	TIR secretariat	1.0	Initial draft	4.3a
06/09/2021	TIR secretariat	1.1	Added message metadata documentation and updated URLs to point to new eTIR documentation portal	4.3.0

9.2. More examples

Please find below an additional example of the E11 - Advance amendment data / E12 - Advance amendment data results messages illustrating a request to amend the itinerary of a TIR transport.

9.2.1. Example 1: Itinerary change

E11 - Advance amendment data request message:

The example below shows the XML data to be sent via POST method to the eTIR international system [endpoint URL](#) to request an amendment to the declaration data related to the TIR transport related to the guarantee **XF95001234**. This advance amendment data was issued on **24/04/2021** at **11:30 UTC+4**. It describes an amendment of type **02 (Change)** related to the modification of the itinerary where the original intermediary country Turkey is being replaced by Azerbaijan for the first consignment (stated in the location field as **Consignment[1]**). If the new itinerary has the same number for countries as the original one (as in the example below), it is possible to change only the relevant routing countries, however this approach will not work for any other itinerary change. Therefore, we always recommend providing the full content of the itinerary.

E11 - Advance amendment data request message

```
<?xml version="1.0" encoding="UTF-8"?>
<soap:Envelope xmlns:cus="etir:v4.3:advanceData" xmlns:md="etir:DocumentMetaData:v4.3"
  xmlns:soap="http://www.w3.org/2003/05/soap-envelope" xmlns:urn="etir:E11:v4.3"
  xmlns:urn1="etir:MetaData_DS:v4.3">
  <soap:Header xmlns:wsa="http://www.w3.org/2005/08/addressing">
    (...)
    <wsa:Action>etir:v4.3:advanceData/advanceAmendmentData</wsa:Action>
    <wsa:MessageID>uuid:00d8b511-4bff-4d3b-805f-7a966355e918</wsa:MessageID>
    (...)
  </soap:Header>
  <soap:Body wsu:Id="id-378f480b-e975-4b89-a4ca-267b83870a92"
    xmlns:wsu="http://docs.oasis-open.org/wss/2004/01/oasis-200401-wss-wssecurity-utility-1.0.xsd">
    <cus:advanceAmendmentData>
      <urn:DocumentMetadata>
        <md:ResponsibleAgencyCode>AJ</md:ResponsibleAgencyCode>
        <md:AgencyAssignedCustomizationCode>1</md:AgencyAssignedCustomizationCode>
        <md:AgencyAssignedCustomizationVersionCode>1</md:AgencyAssignedCustomizationVersionCode>
        <md:CommunicationMetaData>
          <md:PreparationDateTime formatCode="208">20201122113346+0200</md:PreparationDateTime>
          <md:Recipient>
            <md:ID>eTIR international system</md:ID>
          </md:Recipient>
          <md:Sender>
            <md:ID>recipientID</md:ID>
          </md:Sender>
        </md:CommunicationMetaData>
      </urn:DocumentMetadata>
      <urn:Declaration>
        <urn:FunctionCode>4</urn:FunctionCode>
      </urn:Declaration>
    </cus:advanceAmendmentData>
  </soap:Body>
</soap:Envelope>
```

```

<urn:ID>f11d39dc-f7c0-46c4-bfa7-d6c2d3fba782</urn:ID>
<urn:IssueDateTime formatCode="208">20210424113046+0400</urn:IssueDateTime>
<urn:TypeCode>E11</urn:TypeCode>
<urn:Amendment>
  <urn:ChangeReasonCode>02</urn:ChangeReasonCode>
  <urn:Pointer>
    <urn:SequenceNumeric>1</urn:SequenceNumeric>
    <urn:Location>
/Declaration/Consignment[1]/TransitTransportMeans[1]/Itinerary</urn:Location>
  </urn:Pointer>
</urn:Amendment>
<urn:Consignment>
  <urn1:SequenceNumeric>1</urn1:SequenceNumeric>
  <urn1:HeavyOrBulkyGoodsIndicator>0</urn1:HeavyOrBulkyGoodsIndicator>
  <urn1:TransitTransportMeans>
    <urn1:ID>CM-875-KZ</urn1:ID>
    <urn1:Itinerary>
      <urn1:SequenceNumeric>1</urn1:SequenceNumeric>
      <urn1:RoutingCountryCode>GE</urn1:RoutingCountryCode>
    </urn1:Itinerary>
    <urn1:Itinerary>
      <urn1:SequenceNumeric>2</urn1:SequenceNumeric>
      <urn1:RoutingCountryCode>AZ</urn1:RoutingCountryCode>
    </urn1:Itinerary>
    <urn1:Itinerary>
      <urn1:SequenceNumeric>3</urn1:SequenceNumeric>
      <urn1:RoutingCountryCode>IR</urn1:RoutingCountryCode>
    </urn1:Itinerary>
  </urn1:TransitTransportMeans>
</urn:Consignment>
<urn:ObligationGuarantee>
  <urn:ReferenceID>XF95001234</urn:ReferenceID>
</urn:ObligationGuarantee>
<urn:Principal>
  <urn:ID>GE0/054/9890</urn:ID>
</urn:Principal>
</urn:Declaration>
</urn:DocumentMetadata>
</cus:advanceAmendmentData>
</soap:Body>
</soap:Envelope>

```



Some field original contents have been shortened (...) in this document for the sake of readability, in particular the whole **header/security** content that is described in the [eTIR web services introduction document](#).

E12 - Advance amendment data results response message:

The example below shows the XML data of the **E12 - Advance amendment data results** message received in response to the POST of the **E11 - Advance amendment data** message. This response message (Function code **44 - Accepted without reserves**) of the type **E12**, containing no error codes, describes a positive acknowledgment of the recording of all information required to begin a TIR transport related to the declaration **LKT5001234-4537729**, accepted by customs authorities on **24/04/2021 at 11:31 UTC+4**.

E12 - Advance amendment data results response message

```
<?xml version="1.0" encoding="UTF-8"?>
<s:Envelope xmlns:s="http://www.w3.org/2003/05/soap-envelope">
  <s:Header>
    (...)
    <Action xmlns="http://www.w3.org/2005/08/addressing">etir:v4.3:toCustoms/advanceAmendmentData</Action>
    <MessageID xmlns="http://www.w3.org/2005/08/addressing">0bd0977e-2c7f-40b1-85e7-14a3fbc599dd</MessageID>
    (...)
  </s:Header>
  <s:Body wsu:Id="id-e2ead605-e07e-442b-9488-094e7854304c"
    xmlns:wsu="http://docs.oasis-open.org/wss/2004/01/oasis-200401-wss-wssecurity-utility-1.0.xsd">
    <ns2:advanceAmendmentDataResults xmlns:ns2="etir:v4.3:advanceData" xmlns:md="etir:DocumentMetaData:v4.3"
      xmlns:ns8="etir:E12:v4.3">
      <ns8:DocumentMetadata>
        <md:ResponsibleAgencyCode>AJ</md:ResponsibleAgencyCode>
        <md:AgencyAssignedCustomizationCode>1</md:AgencyAssignedCustomizationCode>
        <md:AgencyAssignedCustomizationVersionCode>1</md:AgencyAssignedCustomizationVersionCode>
        <md:CommunicationMetadata>
          <md:PreparationDateTime formatCode="208">20201122113346+0200</md:PreparationDateTime>
          <md:Recipient>
            <md:ID>senderID</md:ID>
          </md:Recipient>
          <md:Sender>
            <md:ID>recipientID</md:ID>
          </md:Sender>
        </md:CommunicationMetadata>
        <ns8:Response>
          <ns8:FunctionCode>44</ns8:FunctionCode>
          <ns8:FunctionalReferenceID>29742146-12db-4191-8c87-83a2456777ca</ns8:FunctionalReferenceID>
          <ns8:ID>874b6edb-9fa8-423c-9eff-7c4577e77407</ns8:ID>
          <ns8:TypeCode>E12</ns8:TypeCode>
          <ns8:Declaration>
            <ns8:AcceptanceDateTime formatCode="208">20210424113102+0400</ns8:AcceptanceDateTime>
            <ns8:ID>LKT5001234-4537729</ns8:ID>
          </ns8:Declaration>
        </ns8:Response>
      </ns8:DocumentMetadata>
    </ns2:advanceAmendmentDataResults>
  </s:Body>
</s:Envelope>
```