

eTIR web services - Messages I7-I8

I7 - Record declaration data / I8 - Record declaration data results



Table of Contents

1. Document revision note	1
2. Related documents	1
3. Purpose	2
4. Target audience	2
5. Prerequisites	2
6. "I7 - Record declaration data" / "I8 - Record declaration data results" messages	3
6.1. Sequence diagram	3
6.1.1. Departure	3
6.1.2. Transit	4
6.1.3. Destination	5
6.2. Message context	5
6.2.1. Message prerequisites	5
6.2.2. Endpoint URL	6
6.3. "I7 - Record declaration data" request message	6
6.3.1. Description	6
6.3.2. How to use response data in the national customs systems	6
6.3.3. Field list	7
6.3.4. Field descriptions	13
6.3.5. Referred code lists	25
6.3.6. Conditions and Rules	25
6.3.7. Example	26
6.4. "I8 - Record declaration data results" response message	30
6.4.1. Description	30
6.4.2. Field list	30
6.4.3. Field descriptions	30
6.4.4. Referred code lists	32
6.4.5. Conditions and Rules	32
6.4.6. Applicable error codes	32
6.4.7. Example	34
7. Fallback procedures	35
8. Support and contact	36
9. Annexes	37
9.1. Version history	37
9.2. XSD Files content	38
9.2.1. Request format	38
9.2.2. Response format	44

1. Document revision note



This document has been published on **23/11/2020**, and is valid for the **eTIR international system version 1.0** based on the **eTIR specifications version 4.3a**.

Please ensure you get the latest version of this document from the [eTIR documentation portal](#) or contact the eTIR service desk ([Support and contact](#)).

2. Related documents

Project documents and collaboration platform

- eTIR documentation portal: <https://wiki.unece.org/display/ED/eTIR+documentation+-+Homepage>
- Project guidelines for customs to connect to the eTIR international system : <https://wiki.unece.org/download/attachments/106299939/Project%20Guidelines%20for%20customs%20to%20connect%20to%20the%20eTIR%20international%20system.pdf>
- eTIR web services - Introduction document: <https://wiki.unece.org/download/attachments/106299935/eTIR%20web%20services%20-%20Introduction%20document.pdf>
- eTIR web services - Messages I1-I2: I1 - Accept guarantee / I2 - Acceptance results {link-etir-I1I2-doc}

Legal framework

- TIR Convention handbook: <http://www.unece.org/tir/tir-hb.html>
- Annex 11 to the TIR Convention: <http://www.unece.org/fileadmin/DAM/trans/bcf/ac2/documents/2020/ECE-TRANS-WP30-AC2-147e.pdf#page=12>

eTIR specifications

- Introduction to the eTIR conceptual, functional and technical v4.2: http://www.unece.org/fileadmin/DAM/trans/bcf/adhoc/conc_tech/documents/id17-05e.pdf
- eTIR concepts v4.2: http://www.unece.org/fileadmin/DAM/trans/bcf/adhoc/conc_tech/documents/id17-06e.pdf
- eTIR Functional specifications v4.2: http://www.unece.org/fileadmin/DAM/trans/bcf/adhoc/conc_tech/documents/id17-07e.pdf
- Approved amendments to the eTIR specifications v4.2 to prepare v4.3: <http://www.unece.org/fileadmin/DAM/trans/bcf/wp30/documents/2020/ECE-TRANS-WP30-2020-07e.pdf>

Additional resources

- eTIR XML schemas: <https://wiki.unece.org/display/ED/Technical+artefacts>
- eTIR code lists: https://www.unece.org/fileadmin/DAM/trans/bcf/eTIR/documents/CodeLists0_4.pdf
- List of eTIR focal points: <http://www.unece.org/trans/bcf/etir/focals.html>

3. Purpose

This document describes the **I7 - Record declaration data** request message, and the **I8 - Record declaration data results** response message of the eTIR international system web services. It provides all the specifics required to use them (prepare or receive), explains how and when they should be used and explains the error codes that may be returned. It also contains examples and fallback procedures, if applicable.

4. Target audience

This guide is intended for the customs authorities ICT teams in charge of interconnecting their national customs systems to the eTIR international system.

5. Prerequisites



In order to ensure an implementation that delivers the best value and services to the customs authorities, we recommend for the ICT team in charge of establishing the connection to the eTIR international system web services to be accompanied by a TIR subject matter expert.

This document is to be read after having an understanding of the [eTIR concepts](#) and having read the [eTIR functional specifications](#). It is highly recommended keeping the [eTIR web services introduction document](#) at hand as the current document refers to many elements and diagrams available in that document.

From a technical perspective, the following steps should have been completed at this point:

- A secured connection to the User Acceptance Testing (UAT) environment of the eTIR international system is established;
- The endpoint URL to the UAT environment is clearly identified and properly configured in the national customs systems;
- All the actions mentioned in the [prerequisites section](#) of the eTIR web services introduction document are performed;
- All the tools required to prepare, receive, test and troubleshoot the messages are ready.
- eTIR web services - Messages I1-I2 should have been implemented and tested.



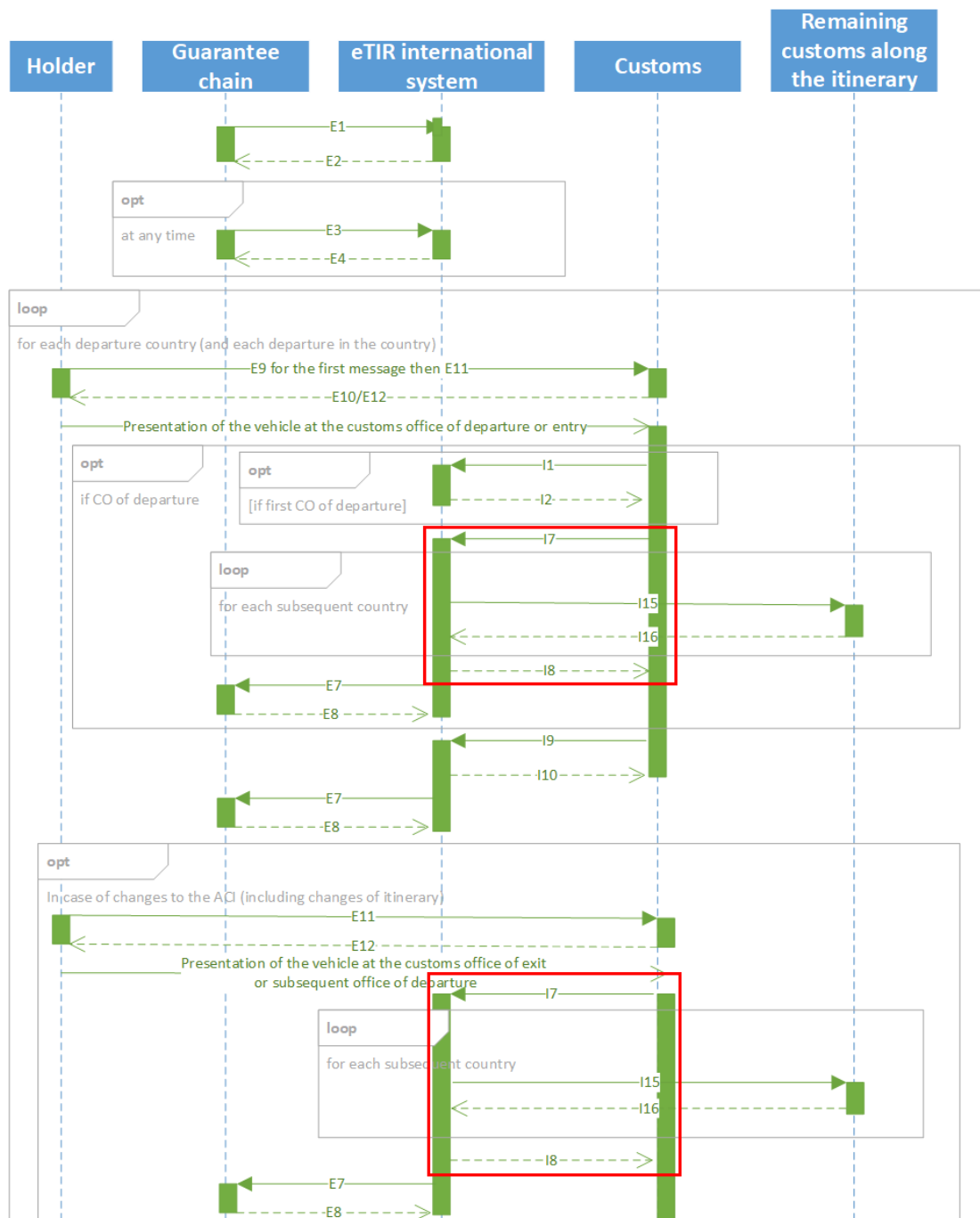
All eTIR messages are identified and belong to a flow described in the eTIR sequence diagrams section of the [eTIR web services introduction document](#). It is key to respect this sequencing, otherwise the eTIR international system will return errors due to invalid sequencing of the messages as described in the [dedicated eTIR error code web page](#).

6. "I7 - Record declaration data" / "I8 - Record declaration data results" messages

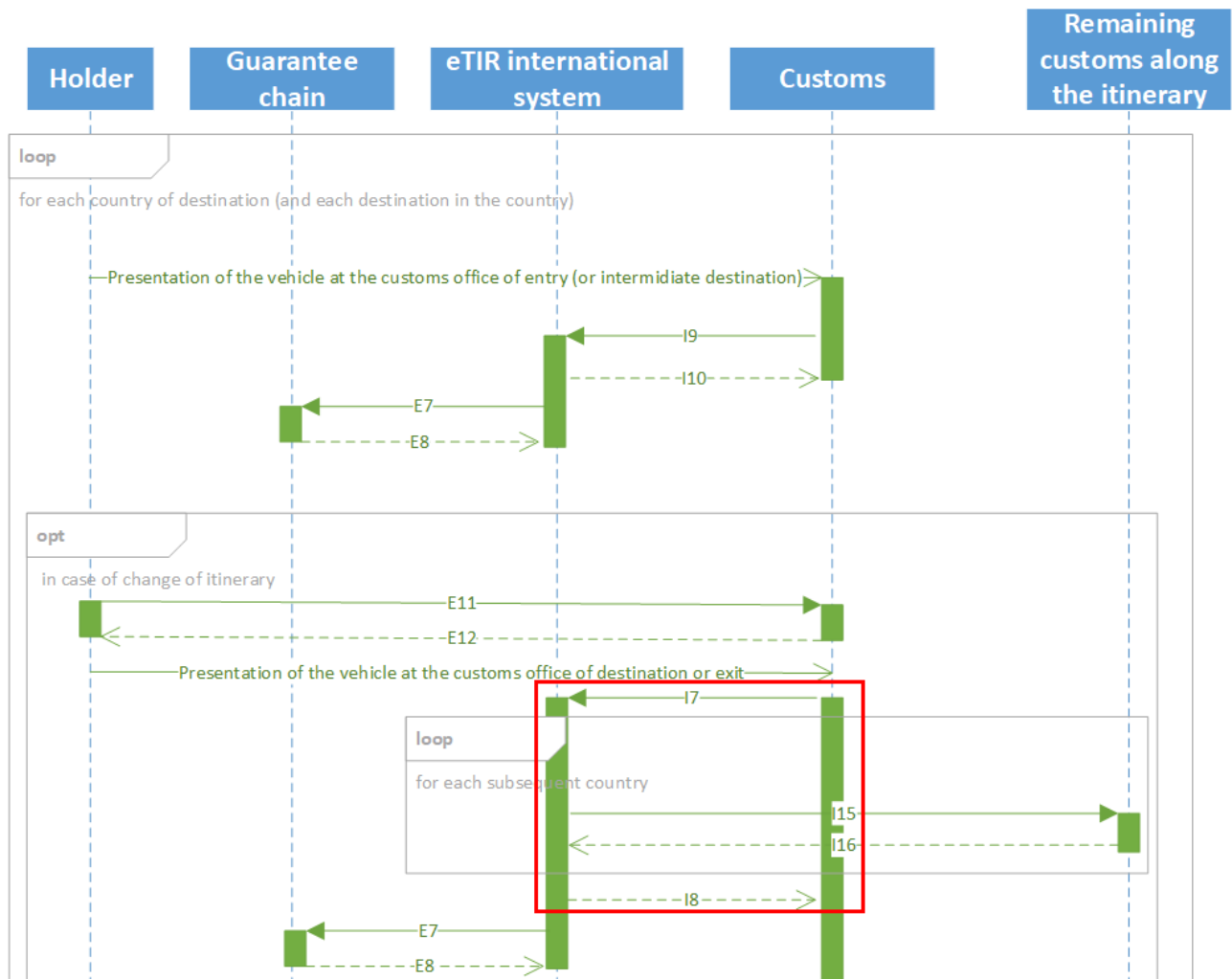
6.1. Sequence diagram

The following sequence diagrams highlight the role and sequence position of the **I7 - Record declaration data** and **I8 - Record declaration data results** messages in the context of TIR departure, TIR transit or TIR destination operations.

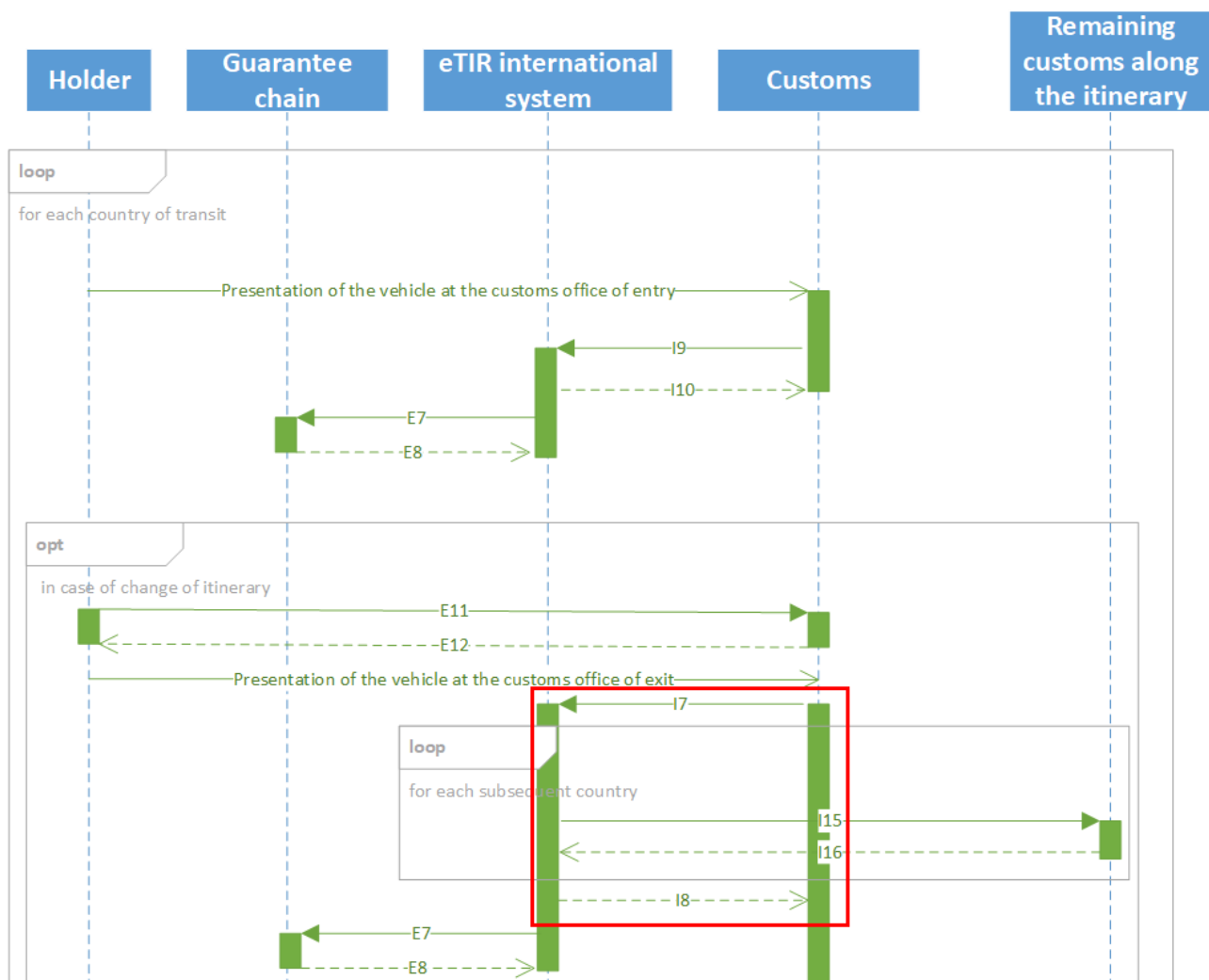
6.1.1. Departure



6.1.2. Transit



6.1.3. Destination



The full eTIR sequence diagrams (Departure, Transit and Destination) are available in the dedicated section of the [eTIR web services introduction document](#).

6.2. Message context

The **I7 - Record declaration data** message is mandatory before starting a TIR transport and should be prepared and sent immediately after the **I1 - Accept guarantee** message has been sent by the same customs office. The **I7 - Record declaration data** contains the data relevant to the declaration accepted by the customs authorities and allows them to record in the eTIR international system all the information related to the declaration for this TIR transport.

6.2.1. Message prerequisites

In order for this message to be properly interpreted by the eTIR international system, the following messages should have been exchanged before this one:

- **E1 - Register guarantee** and **E2 - Registration results** (between the Guarantee chain and the eTIR international system): the eGuarantee that was purchased by the holder must first be registered by the guarantee chain to the eTIR international system so it is known and usable in the system.
- **E9 - Advance TIR data** and **E10 - Advance TIR data results** (between the TIR carnet holder and the national customs system): the holder will have sent to the customs office of departure the advance

TIR data that acts as the pre-declaration for the transport.

- **I1 - Accept guarantee** and **I2 - Acceptance results** (between the national customs system and the eTIR international system): the customs office of departure will have sent to the eTIR international system its acceptance of the guarantee for the transport.

6.2.2. Endpoint URL

The URL of the endpoint to use when sending the **I7 - Record declaration data** request message is: <https://etir-uat-01.unece.org/etir/v4.3/customs/recordDeclarationData>

Also note that the WSDL can be accessed at the following URL: <https://etir-uat-01.unece.org/etir/v4.3/customs/recordDeclarationData?wsdl>

6.3. "I7 - Record declaration data" request message

6.3.1. Description

The national customs systems sends the **I7 - Record declaration data** request message to the eTIR international system to record the declaration data related to the beginning of a TIR transport.

The XSD file related to the **I7 - Record declaration data** message is available at the following URL: <https://www.unece.org/trans/bcf/etir/>.

6.3.2. How to use response data in the national customs systems

The eTIR international system will return whether there were errors while processing the request message by filling in the "Error" list. Therefore, and as for all response messages expected from the eTIR international system, the first step when parsing the **I8 - Record declaration data results** response message should always be to look for potential error elements in the response message and address them accordingly as mentioned in the Error Management section of the [Introduction document](#).

If there was no error, and the response message content is as expected, the next step is for the national customs systems to record all national references sent back by the countries along the itinerary of the transport. The national customs systems will then have to provide the accompanying document by indicating these references on it (accordingly to the relevant section of the eTIR functional specifications), and the customs officer will hand over this paper to the driver of the TIR transport as this paper can be used in case of fallback procedures.

After having performed this action, the next step is for the customs officer to enter the details about the seal(s) affixed to the road vehicle in the national customs systems, the combination of vehicles or the container so that the national customs systems can send the notification of the start of the TIR operation to the eTIR international system using the **I9 - Start TIR operation** message.

6.3.3. Field list

eTIR field name	Mapping to the XML element (XPATH)	Mandatory	Format	Code lists	Conditions	Rules	WCO ID
MESSAGE							75B
└ Message function, coded	FunctionCode	R	n..2	CL16			017
└ Message identifier	ID	R	an..70				D014
└ Type, coded	TypeCode	R	an..3	CL26			D013
└ ADVANCETIRDATA	Declaration	R					
└ Message function, coded	Declaration/FunctionCode	R	n..2	CL16			017
└ Functional reference	Declaration/FunctionalReferenceID	D	an..70		C008		D026
└ Message Identifier	Declaration/ID	R	an..70				D014
└ Issuing date	Declaration/IssueDateTime	R	an..35				D011
└ Type, coded	Declaration/TypeCode	R	an..3	CL26			D013
└ Version	Declaration/VersionID	R	an..9				383
└ Total gross weight	Declaration/TotalGrossMassMeasure	O	n..16,6				131
└ ADDITIONALINFORMATION	Declaration/AdditionalInformation	D			C008		03A
└ Heavy and bulky goods indicator	Declaration/AdditionalInformation/StatementCode	R	an..17	CL14			226
└ Remarks	Declaration/AdditionalInformation/StatementDescription	O	an..512				225
└ AGENT	Declaration/Agent	O					05A
└ Name	Declaration/Agent/Name	D	an..70		C001		R003
└ Code	Declaration/Agent/ID	D	an..35		C001		R004
└ Role, coded	Declaration/Agent/RoleCode	R	an..3	CL02			R005
└ AMENDMENT	Declaration/Amendment	D			C008		06A
└ Amendment code	Declaration/Amendment/ChangeReasonCode	R	an..3	CL17			099
└ POINTER	Declaration/Amendment/Pointer	R					97A
└ Sequence number	Declaration/Amendment/Pointer/SequenceNumeric	R	n..5				006
└ Location	Declaration/Amendment/Pointer/Location	R	an..512				512
└ SUBCONTRACTOR	Declaration/Carrier	O					18A
└ Name	Declaration/Carrier/Name	D	an..70		C001		R011
└ Code	Declaration/Carrier/ID	D	an..35		C001		R012
└ ADDRESS	Declaration/Carrier/Address	D			C001		04A
└ City name	Declaration/Carrier/Address/CityName	R	an..35				241
└ Country, coded	Declaration/Carrier/Address/CountryCode	R	a2	CL04			242
└ Street and number/P.O. Box	Declaration/Carrier/Address/Line	R	an..256				239

eTIR field name	Mapping to the XML element (XPATH)	Mandatory	Format	Code lists	Conditions	Rules	WCO ID
Postcode identification	Declaration/Carrier/Address/PostcodeID	R	an..17				245
CONSIGNMENT	Declaration/Consignment	D			C008		28A
Sequence number	Declaration/Consignment/SequenceNumeric	R	n..5				006
ATTACHEDDOCUMENTS	Declaration/Consignment/AdditionalDocument	O					02A
Number	Declaration/Consignment/AdditionalDocument/ID	R	an..70				D005
Issuing date	Declaration/Consignment/AdditionalDocument/IssueDateTime	R	an..35				D002
Type, coded	Declaration/Consignment/AdditionalDocument/TypeCode	R	an..3	CL06			D006
BINARYFILE	Declaration/Consignment/AdditionalDocument/BinaryFile	O					72B
Identification	Declaration/Consignment/AdditionalDocument/BinaryFile/ID	R	an..256				M001
Title	Declaration/Consignment/AdditionalDocument/BinaryFile/Title	R	an..256				M002
Author name	Declaration/Consignment/AdditionalDocument/BinaryFile/AuthorName	O	an..70				M003
Version	Declaration/Consignment/AdditionalDocument/BinaryFile/VersionID	O	an..17				M004
File name	Declaration/Consignment/AdditionalDocument/BinaryFile/FileNameText	O	an..256				M005
URI	Declaration/Consignment/AdditionalDocument/BinaryFile/URIID	O	an..2048				M006
MIME	Declaration/Consignment/AdditionalDocument/BinaryFile/MIMECode	O	an..70				M007
Encoding	Declaration/Consignment/AdditionalDocument/BinaryFile/EncodingCode	O	an..17				M008
Character set	Declaration/Consignment/AdditionalDocument/BinaryFile/CharacterSetCode	O	n..17				M009
Include binary object	Declaration/Consignment/AdditionalDocument/BinaryFile/IncludedBinaryObjectBinaryObject	O	N/A				M010
Access	Declaration/Consignment/AdditionalDocument/BinaryFile/Access	O	an..256				M011
Description	Declaration/Consignment/AdditionalDocument/BinaryFile/Description	O	an..256				M012
Size	Declaration/Consignment/AdditionalDocument/BinaryFile/SizeMeasure	O	n..16,6				M013
Type	Declaration/Consignment/AdditionalDocument/BinaryFile/TypeCode	O	an..6				M014

eTIR field name	Mapping to the XML element (XPATH)	Mandatory	Format	Code lists	Conditions	Rules	WCO ID
Hash code	Declaration/Consignment/AdditionalDocument/BinaryFile/H ashCode	O	an..256				M015
Hash code algorithm id	Declaration/Consignment/AdditionalDocument/BinaryFile/H ashCodeAlgorithmIDCode	O	an..6				M016
CONSIGNMENTITEM	Declaration/Consignment/ConsignmentItem	R					29A
Sequence number	Declaration/Consignment/ConsignmentItem/SequenceNumeric	R	n..5				006
ADDITIONALINFORMATION	Declaration/Consignment/ConsignmentItem/AdditionalInfor mation	O					03A
Remarks	Declaration/Consignment/ConsignmentItem/AdditionalInfor mation/Content	R	an..512				105
GOODS	Declaration/Consignment/ConsignmentItem/Commodity	R					23A
Description	Declaration/Consignment/ConsignmentItem/Commodity/Cargo Description	D	an..256		C004		138
CLASSIFICATION	Declaration/Consignment/ConsignmentItem/Commodity/Class ification	O				R008	21A
Code	Declaration/Consignment/ConsignmentItem/Commodity/Class ification/ID	R	an..18				145
CONSIGNEE	Declaration/Consignment/ConsignmentItem/Consignee	O					27A
Name	Declaration/Consignment/ConsignmentItem/Consignee/Name	D	an..70		C001		R014
Code	Declaration/Consignment/ConsignmentItem/Consignee/ID	D	an..35		C001		R015
ADDRESS	Declaration/Consignment/ConsignmentItem/Consignee/Addre ss	D			C001		04A
City name	Declaration/Consignment/ConsignmentItem/Consignee/Addre ss/CityName	R	an..35				241
Country, coded	Declaration/Consignment/ConsignmentItem/Consignee/Addre ss/CountryCode	R	a2	CL04			242
Street and number/P.O. Box	Declaration/Consignment/ConsignmentItem/Consignee/Addre ss/Line	R	an..256				239
Postcode identification	Declaration/Consignment/ConsignmentItem/Consignee/Addre ss/PostcodeID	R	an..17				245
CONSIGNOR	Declaration/Consignment/ConsignmentItem/Consignor	O					30A
Name	Declaration/Consignment/ConsignmentItem/Consignor/Name	D	an..70		C001		R020
Code	Declaration/Consignment/ConsignmentItem/Consignor/ID	D	an..35		C001		R021
ADDRESS	Declaration/Consignment/ConsignmentItem/Consignor/Addre ss	D			C001		04A
City name	Declaration/Consignment/ConsignmentItem/Consignor/Addre ss/CityName	R	an..35				241

eTIR field name	Mapping to the XML element (XPATH)	Mandatory	Format	Code lists	Conditions	Rules	WCO ID
Country, coded	Declaration/Consignment/ConsignmentItem/Consignor/Address/CountryCode	R	a2	CL04			242
Street and number/P.O. Box	Declaration/Consignment/ConsignmentItem/Consignor/Address/Line	R	an..256				239
Postcode identification	Declaration/Consignment/ConsignmentItem/Consignor/Address/PostcodeID	R	an..17				245
DELIVERYDESTINATION	Declaration/Consignment/ConsignmentItem/DeliveryDestination	O					44A
Name	Declaration/Consignment/ConsignmentItem/DeliveryDestination/Name	R	an..70				R027
ADDRESS	Declaration/Consignment/ConsignmentItem/DeliveryDestination/Address	R					04A
City name	Declaration/Consignment/ConsignmentItem/DeliveryDestination/Address/CityName	R	an..35				241
Country, coded	Declaration/Consignment/ConsignmentItem/DeliveryDestination/Address/CountryCode	R	a2	CL04			242
Street and number/P.O. Box	Declaration/Consignment/ConsignmentItem/DeliveryDestination/Address/Line	R	an..256				239
Postcode identification	Declaration/Consignment/ConsignmentItem/DeliveryDestination/Address/PostcodeID	R	an..17				245
GOODSMEASURE	Declaration/Consignment/ConsignmentItem/GoodsMeasure	R					65A
Gross weight	Declaration/Consignment/ConsignmentItem/GoodsMeasure/GrossMassMeasure	R	n..16,6				126
PACKAGING	Declaration/Consignment/ConsignmentItem/Packaging	R					93A
Marks and numbers	Declaration/Consignment/ConsignmentItem/Packaging/MarksNumbersID	O	an..512				142
Number of packages	Declaration/Consignment/ConsignmentItem/Packaging/QuantityQuantity	D	n..8		C002		144
Type, coded	Declaration/Consignment/ConsignmentItem/Packaging/TypeCode	R	an..2	CL07			141
TRANSPORTEQUIPMENT	Declaration/Consignment/ConsignmentItem/TransportEquipment	D			C003		31B
Identification	Declaration/Consignment/ConsignmentItem/TransportEquipment/ID	R	an..17				159
UCR	Declaration/Consignment/ConsignmentItem/UCR	O					35B
Identifier	Declaration/Consignment/ConsignmentItem/UCR/ID	O	an..35				016
LOADINGLOCATION	Declaration/Consignment/LoadingLocation	O					83A
Name	Declaration/Consignment/LoadingLocation/Name	O	an..256				L009

eTIR field name	Mapping to the XML element (XPATH)	Mandatory	Format	Code lists	Conditions	Rules	WCO ID
NOTIFYPARTY	Declaration/Consignment/NotifyParty	O					89A
Name	Declaration/Consignment/NotifyParty/Name	D	an..70		C001		R045
Code	Declaration/Consignment/NotifyParty/ID	D	an..35		C001		R046
ADDRESS	Declaration/Consignment/NotifyParty/Address	D			C001		04A
City name	Declaration/Consignment/NotifyParty/Address/CityName	R	an..35				241
Country, coded	Declaration/Consignment/NotifyParty/Address/CountryCode	R	a2	CL04			242
Street and number/P.O. Box	Declaration/Consignment/NotifyParty/Address/Line	R	an..256				239
Postcode identification	Declaration/Consignment/NotifyParty/Address/PostcodeID	R	an..17				245
CUSTOMSOFFICEOFDEPARTURE	Declaration/Consignment/TransitDeparture	R					25B
Code	Declaration/Consignment/TransitDeparture/ID	R	an..17				L087
CUSTOMSOFFICEOFDESTINATION	Declaration/Consignment/TransitDestination	R					26B
Code	Declaration/Consignment/TransitDestination/ID	R	an..17				L008
TRANSPORTMEANS	Declaration/Consignment/TransitTransportMeans	R					29B
Identification	Declaration/Consignment/TransitTransportMeans/ID	R	an..25				T007
Type, coded	Declaration/Consignment/TransitTransportMeans/TypeCode	R	an..4	CL05			T011
Nationality	Declaration/Consignment/TransitTransportMeans/RegistrationNationalityCode	R	a2	CL04			T015
Conveyance reference number	Declaration/Consignment/TransitTransportMeans/JourneyID	O	an..17				149
COUNTRYOFFROUTING	Declaration/Consignment/TransitTransportMeans/Itinerary	R				R001	81A
Sequence number	Declaration/Consignment/TransitTransportMeans/Itinerary/SequenceNumeric	R	n..5				006
Country, coded	Declaration/Consignment/TransitTransportMeans/Itinerary/RoutingCountryCode	R	a2	CL04			064
TRANSPORTEQUIPMENT	Declaration/Consignment/TransportEquipment	D			C003		31B
Sequence number	Declaration/Consignment/TransportEquipment/SequenceNumeric	R	n..5				006
Size and type identification	Declaration/Consignment/TransportEquipment/CharacteristicCode	R	an..4	CL01			152
Identification	Declaration/Consignment/TransportEquipment/ID	R	an..17				159
CERTIFICATEOFAPPROVAL	Declaration/Consignment/TransportEquipment/AdditionalDocument	D			C005		02A
Number	Declaration/Consignment/TransportEquipment/AdditionalDocument/ID	R	an..70				D005
Issuing date	Declaration/Consignment/TransportEquipment/AdditionalDocument/IssueDateTime	R	an..35				D002

eTIR field name	Mapping to the XML element (XPATH)	Mandatory	Format	Code lists	Conditions	Rules	WCO ID
Type, coded	Declaration/Consignment/TransportEquipment/AdditionalDocument/TypeCode	R	an..3	CL06			D006
BINARYFILE	Declaration/Consignment/TransportEquipment/AdditionalDocument/BinaryFile	O					72B
Identification	Declaration/Consignment/TransportEquipment/AdditionalDocument/BinaryFile/ID	R	an..256				M001
Title	Declaration/Consignment/TransportEquipment/AdditionalDocument/BinaryFile/Title	R	an..256				M002
Author name	Declaration/Consignment/TransportEquipment/AdditionalDocument/BinaryFile/AuthorName	O	an..70				M003
Version	Declaration/Consignment/TransportEquipment/AdditionalDocument/BinaryFile/VersionID	O	an..17				M004
File name	Declaration/Consignment/TransportEquipment/AdditionalDocument/BinaryFile/FileNameText	O	an..256				M005
URI	Declaration/Consignment/TransportEquipment/AdditionalDocument/BinaryFile/URIID	O	an..2048				M006
MIME	Declaration/Consignment/TransportEquipment/AdditionalDocument/BinaryFile/MIMECode	O	an..70				M007
Encoding	Declaration/Consignment/TransportEquipment/AdditionalDocument/BinaryFile/EncodingCode	O	an..17				M008
Character set	Declaration/Consignment/TransportEquipment/AdditionalDocument/BinaryFile/CharacterSetCode	O	n..17				M009
Include binary object	Declaration/Consignment/TransportEquipment/AdditionalDocument/BinaryFile/IncludedBinaryObjectBinaryObject	O	N/A				M010
Access	Declaration/Consignment/TransportEquipment/AdditionalDocument/BinaryFile/Access	O	an..256				M011
Description	Declaration/Consignment/TransportEquipment/AdditionalDocument/BinaryFile/Description	O	an..256				M012
Size	Declaration/Consignment/TransportEquipment/AdditionalDocument/BinaryFile/SizeMeasure	O	n..16,6				M013
Type	Declaration/Consignment/TransportEquipment/AdditionalDocument/BinaryFile/TypeCode	O	an..6				M014
Hash code	Declaration/Consignment/TransportEquipment/AdditionalDocument/BinaryFile/HashCode	O	an..256				M015
Hash code algorithm id	Declaration/Consignment/TransportEquipment/AdditionalDocument/BinaryFile/HashCodeAlgorithmIDCode	O	an..6				M016
SEAL	Declaration/Consignment/TransportEquipment/Seal	O					44B

eTIR field name	Mapping to the XML element (XPATH)	Mandatory	Format	Code lists	Conditions	Rules	WCO ID
Sequence number	Declaration/Consignment/TransportEquipment/Seal/SequenceNumeric	R	n..5			R003, R004	006
Seal number	Declaration/Consignment/TransportEquipment/Seal/ID	R	an..35			R005	165
Seal type code	Declaration/Consignment/TransportEquipment/Seal/TypeCode	O	an..3	CL08			407
GUARANTEE	Declaration/DeclarationGuarantee	D			C008		92B
Validity	Declaration/DeclarationGuarantee/ExpirationDateTime	R	an..35				275
Reference	Declaration/DeclarationGuarantee/ReferenceID	R	an..35				100
HOLDER	Declaration/Principal	D			C008		28B
Name	Declaration/Principal/Name	O	an..70				R001
Code	Declaration/Principal/ID	R	an..35				R002
ADDRESS	Declaration/Principal/Address	D			C001		04A
City name	Declaration/Principal/Address/CityName	R	an..35				241
Country, coded	Declaration/Principal/Address/CountryCode	R	a2	CL04			242
Street and number/P.O. Box	Declaration/Principal/Address/Line	R	an..256				239
Postcode identification	Declaration/Principal/Address/PostcodeID	R	an..17				245

6.3.4. Field descriptions

eTIR field name	Mapping to the XML element (XPATH)	Description	Usage
MESSAGE			
Message function, coded	FunctionCode	Code describing the function of the message	The value should be set to "9" if this message is the original (the first one to be submitted for this TIR transport) or "4" if this message reflects an amendment to the declaration
Message identifier	ID	Unique identifier of the message	The value should be a Globally Unique Identifier (GUID) as detailed in the dedicated section of the introduction document
Type, coded	TypeCode	Code of the message type	The value should be set to "17"
ADVANCETIRDATA	Declaration	Class representing the declaration data as accepted by customs	
Message function, coded	Declaration/FunctionCode	Code describing the function of the message E9 (or E11) received by the customs	The value should be set to "9" in case a message E9 was received or "4" in case a message E11 was received

eTIR field name	Mapping to the XML element (XPATH)	Description	Usage
└ Functional reference	Declaration/FunctionalReferenceID	Reference to the unique identifier of the message E9 received by the customs in the case of an update	The value should be empty in case a message E9 was received by the customs. Otherwise, The value should be the one from the "Functional Reference" attribute of the message E11 received by the customs
└ Message Identifier	Declaration/ID	Unique identifier of the message E9 (or E11) received by the customs	The value should be the one from the "Message Identifier" attribute of the message E9 (or E11) received by the customs
└ Issuing date	Declaration/IssueDateTime	Date at which the message E9 (or E11) received by the customs, was issued	The value should be the one from the "Issuing date" attribute of the message E9 received by the customs
└ Type, coded	Declaration/TypeCode	Code of the type of the message E9 (or E11) received by the customs	The value should be the one from the "Type, coded" attribute of the message E9 (or E11) received by the customs
└ Version	Declaration/VersionID	Version number of the declaration	The value should be either "1" for the initial declaration or the previous declaration version + 1 for any amendment to the declaration
└ Total gross weight	Declaration/TotalGrossMassMeasure	Total gross weight of goods (including packaging) of the declaration	The value should be the total gross weight as a decimal number The unit should be defined in the Measure Unit. Code attribute and should match one of the values listed in the list Measurement unit code (UNECE Recommendation 20)
└└ ADDITIONALINFORMATION	Declaration/AdditionalInformation	Class containing potential additional information at the declaration level	
└ Heavy and bulky goods indicator	Declaration/AdditionalInformation/StatementCode	Code describing whether the goods are considered (according to article 29) as "heavy or bulky", as defined article 1 (p) of the TIR Convention.	The value should be "1" if the goods are considered by the customs as "heavy or bulky" or "0" otherwise
└ Remarks	Declaration/AdditionalInformation/StatementDescription	Text used to allow for remarks to the declaration from the {holder-denomination}	The value contains the remarks to the declaration from the transporter, or remains blank if there are none
└└ AGENT	Declaration/Agent	Class representing the potential agent which would declare the goods on behalf of the {holder-denomination}	
└ Name	Declaration/Agent/Name	Name of the agent	The value should be the official company name, or the first and last name of the person in case of physical person, to allow for quick identification
└ Code	Declaration/Agent/ID	Unique identifier of the agent	The value should be the unique identifier of the agent

eTIR field name	Mapping to the XML element (XPATH)	Description	Usage
↳ Role, coded	Declaration/Agent/RoleCode	Code of the role of the agent	The value should be the code matching the role of the agent from the list Party role code (UN/EDIFACT 3035)
├─ AMENDMENT	Declaration/Amendment	List of potential amendments to the declaration	
↳ Amendment code	Declaration/Amendment/ChangeReasonCode	Code describing the type of amendment	The value should be the code matching the type of amendment from the list Amendment code (eTIR) (https://www.unece.org/fileadmin/DAM/trans/bcf/eTIR/documents/CodeLists0_4.pdf#page=121)
↳ POINTER	Declaration/Amendment/Pointer	Pointer to the part of the declaration to be amended	
↳ Sequence number	Declaration/Amendment/Pointer/SequenceNumeric	Index of the pointer in the list	The value should be the index (1-based) of the pointer in the list
↳ Location	Declaration/Amendment/Pointer/Location	Referred message section to be amended	The value should be the XPATH expression pointing towards the section of the message to the amended
├─ SUBCONTRACTOR	Declaration/Carrier	Class representing the potential agent which undertakes or arranges transport of goods between named points	
↳ Name	Declaration/Carrier/Name	Name of the subcontractor	The value should be the official company name, or the first and last name of the person in case of physical person, to allow for quick identification
↳ Code	Declaration/Carrier/ID	Unique identifier of the subcontractor	The value should be the unique identifier of the subcontractor
↳ ADDRESS	Declaration/Carrier/Address	Class representing the physical address of the subcontractor	
↳ City name	Declaration/Carrier/Address/CityName	City name of the physical address of the subcontractor	The value should be the city name of the physical address of the subcontractor
↳ Country, coded	Declaration/Carrier/Address/CountryCode	Code of the country of the physical address of the subcontractor	The value should be the code of the country of the physical address of the subcontractor from the list Country name code (ISO 3166-1-alpha-2)
↳ Street and number/P.O. Box	Declaration/Carrier/Address/Line	Street name of the physical address of the subcontractor	The value should be the street name and number (or equivalent) of the physical address of the subcontractor
↳ Postcode identification	Declaration/Carrier/Address/PostcodeID	Postal/Zip code of the physical address of the subcontractor	The value should be the postal/ZIP code of the physical address of the subcontractor
├─ CONSIGNMENT	Declaration/Consignment	List of details on the transport of goods between a loading point and an unloading point	

eTIR field name	Mapping to the XML element (XPATH)	Description	Usage
Sequence number	Declaration/Consignment/SequenceNumeric	Index of the consignment in the list	The value should be the index (1-based) of the consignment in the list
ATTACHEDDOCUMENTS	Declaration/Consignment/AdditionalDocument	List of potential additional documents supplied as part of the declaration and related to the consignment	
Number	Declaration/Consignment/AdditionalDocument/ID	Identifier of the document	The value should be an ID identifying the document and it should be unique among all other attached documents of the declaration
Issuing date	Declaration/Consignment/AdditionalDocument/IssueDateTime	Issuing date of the document	The value should be a date to be provided following the EDIFACT 208 format CCYYMMDDHHMMSSZHMM (http://www.unece.org/trade/untdid/d13b/tred/tred2379.htm). For Example: 20200820145600+0100 represents 20 August 2020 at 14:56 UTC+01:00.
Type, coded	Declaration/Consignment/AdditionalDocument/TypeCode	Code of the type of the document	The value should be the code of the type of the document from the list Document name code (UN/EDIFACT 1001)
BINARYFILE	Declaration/Consignment/AdditionalDocument/BinaryFile	The content of the document	
Identification	Declaration/Consignment/AdditionalDocument/BinaryFile/ID	Unique identifier of the file representing the document	The value should be an ID identifying the file and it should be unique among all other binary files of the declaration
Title	Declaration/Consignment/AdditionalDocument/BinaryFile/Title	Title of the document	The value should be the title of the document
Author name	Declaration/Consignment/AdditionalDocument/BinaryFile/AuthorName	Name of the author of the document	The value should be the first and last name of the author of the document
Version	Declaration/Consignment/AdditionalDocument/BinaryFile/VersionID	Version number of the document	The value should be the version of the document
File name	Declaration/Consignment/AdditionalDocument/BinaryFile/FileNameText	File name of the document	The value should be the name of the file representing the document, including the extension
URI	Declaration/Consignment/AdditionalDocument/BinaryFile/URIID	URI of the document	The value should be the Unique Resource Identifier (URI) allowing to access the document instead of relying on a binary object representation
MIME	Declaration/Consignment/AdditionalDocument/BinaryFile/MIMECode	Code of the MIME type of the file	The value should be one of the MIME types as listed by the IANA organization on the page: http://www.iana.org/assignments/media-types/media-types.xhtml
Encoding	Declaration/Consignment/AdditionalDocument/BinaryFile/EncodingCode	Code of the encoding algorithm of the file	The value should be the type of encoding algorithm used to encode the file

eTIR field name	Mapping to the XML element (XPATH)	Description	Usage
Character set	Declaration/Consignment/AdditionalDocument/BinaryFile/CharacterSetCode	Code of the character set of the file	The value should be the character set used in case the file is a text file
Include binary object	Declaration/Consignment/AdditionalDocument/BinaryFile/IncludedBinaryObjectBinaryObject	Binary representation of the file	The value should be the content of the file represented using the characteristics mentioned in the other attributes (EncodingCode and CharacterSetCode)
Access	Declaration/Consignment/AdditionalDocument/BinaryFile/Access	Access information of the file	The value should be the information needed to access the file, such as security and download parameters. This is only useful when the file is accessible using the URIID parameter
Description	Declaration/Consignment/AdditionalDocument/BinaryFile/Description	Description of the document	The value should be the description of the document and explain what it contains
Size	Declaration/Consignment/AdditionalDocument/BinaryFile/SizeMeasure	Size of the file	The value should be the size of the file The unit should be defined in the Measure Unit. Code attribute and should match one of the values listed in the Measurement unit code (UNECE Recommendation 20)
Type	Declaration/Consignment/AdditionalDocument/BinaryFile/TypeCode	Code of the type of file	
Hash code	Declaration/Consignment/AdditionalDocument/BinaryFile/HashCode	Hash value of the file	The value should be the hash code string that resulted from hashing the attached file to be used for file reception validation
Hash code algorithm id	Declaration/Consignment/AdditionalDocument/BinaryFile/HashCodeAlgorithmIDCode	Code of the hash algorithm	The value should be the short name of the algorithm used to compute the hash value of the file
CONSIGNMENTITEM	Declaration/Consignment/ConsignmentItem	List of details on the items in the consignment	
Sequence number	Declaration/Consignment/ConsignmentItem/SequenceNumeric	Index of the consignment item in the list	The value should be the index (1-based) of the consignment in the list, allowing for quick physical identification upon inspection
ADDITIONALINFORMATION	Declaration/Consignment/ConsignmentItem/AdditionalInformation	List of potential additional information at the consignment item level	
Remarks	Declaration/Consignment/ConsignmentItem/AdditionalInformation/Content	Remarks on the consignment item	The value should be a text allowing for additional remarks on the consignment item
GOODS	Declaration/Consignment/ConsignmentItem/Commodity	Class representing the details on the goods	
Description	Declaration/Consignment/ConsignmentItem/Commodity/CargoDescription	Description of the goods	The value should be a text describing the goods
CLASSIFICATION	Declaration/Consignment/ConsignmentItem/Commodity/Classification	List of classification details of the goods	
Code	Declaration/Consignment/ConsignmentItem/Commodity/Classification/ID	Code of the classification of the goods	The value should be the code of the non-commercial classification of the goods

eTIR field name	Mapping to the XML element (XPATH)	Description	Usage
⊢ CONSIGNEE	Declaration/Consignment/ConsignmentItem/Consignee	Class representing the potential consignee of the goods	
⊢ Name	Declaration/Consignment/ConsignmentItem/Consignee/Name	Name of the consignee	The value should be the official company name, or the first and last name of the person in case of physical person, to allow for quick identification
⊢ Code	Declaration/Consignment/ConsignmentItem/Consignee/ID	Unique identifier of the consignee	The value should be the unique identifier of the consignee
⊢ ADDRESS	Declaration/Consignment/ConsignmentItem/Consignee/Address	Class representing the physical address of the consignee	
⊢ City name	Declaration/Consignment/ConsignmentItem/Consignee/Address/CityName	City name of the physical address of the consignee	The value should be the city name of the physical address of the consignee
⊢ Country, coded	Declaration/Consignment/ConsignmentItem/Consignee/Address/CountryCode	Code of the country of the physical address of the consignee	The value should be the code of the country of the physical address of the consignee from the list Country name code (ISO 3166-1-alpha-2) (https://www.unece.org/fileadmin/DAM/trans/bcf/eTIR/documents/CodeLists0_4.pdf#page=38)
⊢ Street and number/P.O. Box	Declaration/Consignment/ConsignmentItem/Consignee/Address/Line	Street name of the physical address of the consignee	The value should be the street name and number (or equivalent) of the physical address of the consignee
⊢ Postcode identification	Declaration/Consignment/ConsignmentItem/Consignee/Address/PostcodeID	Postal/Zip code of the physical address of the consignee	The value should be the postal/ZIP code of the physical address of the consignee
⊢ CONSIGNOR	Declaration/Consignment/ConsignmentItem/Consignor	Class representing the potential consignor of the goods	
⊢ Name	Declaration/Consignment/ConsignmentItem/Consignor/Name	Name of the consignor	The value should be the official company name, or the first and last name of the person in case of physical person, to allow for quick identification
⊢ Code	Declaration/Consignment/ConsignmentItem/Consignor/ID	Unique identifier of the consignor	The value should be the unique identifier of the consignor
⊢ ADDRESS	Declaration/Consignment/ConsignmentItem/Consignor/Address	Class representing the physical address of the consignor	
⊢ City name	Declaration/Consignment/ConsignmentItem/Consignor/Address/CityName	City name of the physical address of the consignor	The value should be the city name of the physical address of the consignor
⊢ Country, coded	Declaration/Consignment/ConsignmentItem/Consignor/Address/CountryCode	Code of the country of the physical address of the consignor	The value should be the code of the country of the physical address of the consignor from the list (Country name code (ISO 3166-1-alpha-2))
⊢ Street and number/P.O. Box	Declaration/Consignment/ConsignmentItem/Consignor/Address/Line	Street name of the physical address of the consignor	The value should be the street name and number (or equivalent) of the physical address of the consignor

eTIR field name	Mapping to the XML element (XPATH)	Description	Usage
↳ Postcode identification	Declaration/Consignment/ConsignmentItem/Consignor/Address/PostcodeID	Postal/Zip code of the physical address of the consignor	The value should be the postal/ZIP code of the physical address of the consignor
⊢ DELIVERYDESTINATION	Declaration/Consignment/ConsignmentItem/DeliveryDestination	Class representing the potential party to which the goods should be delivered	
⊢ Name	Declaration/Consignment/ConsignmentItem/DeliveryDestination/Name	Name of the delivery destination	The name of the recipient should be the official company name, or the first and last name of the person in case of physical person, to allow for quick identification.
↳ ADDRESS	Declaration/Consignment/ConsignmentItem/DeliveryDestination/Address	Class representing the physical address of the delivery destination	
⊢ City name	Declaration/Consignment/ConsignmentItem/DeliveryDestination/Address/CityName	City name of the physical address of the delivery destination	The value should be the city name of the physical address of the delivery destination
⊢ Country, coded	Declaration/Consignment/ConsignmentItem/DeliveryDestination/Address/CountryCode	Code of the country of the physical address of the delivery destination	The value should be the code of the country of the physical address of the delivery destination from the list (Country name code (ISO 3166-1-alpha-2))
⊢ Street and number/P.O. Box	Declaration/Consignment/ConsignmentItem/DeliveryDestination/Address/Line	Street name of the physical address of the delivery destination	The value should be the street name and number (or equivalent) of the physical address of the delivery destination
↳ Postcode identification	Declaration/Consignment/ConsignmentItem/DeliveryDestination/Address/PostcodeID	Postal/Zip code of the physical address of the delivery destination	The value should be the postal/ZIP code of the physical address of the delivery destination
⊢ GOODSMEASURE	Declaration/Consignment/ConsignmentItem/GoodsMeasure	Class representing the details on the measures of the goods	
↳ Gross weight	Declaration/Consignment/ConsignmentItem/GoodsMeasure/GrossMassMeasure	Total gross weight of the goods	The value should be the weight (mass) of goods including packaging but excluding the transport equipment. The unit should be defined in the Measure Unit. Code attribute and should match one of the values listed in the Measurement unit code (UNECE Recommendation 20)
⊢ PACKAGING	Declaration/Consignment/ConsignmentItem/Packaging	Class representing the details on the packaging of the goods	
⊢ Marks and numbers	Declaration/Consignment/ConsignmentItem/Packaging/MarksNumbersID	Packaging marks and numbers	The value should be a text describing the marks and numbers on a transport unit or package.
⊢ Number of packages	Declaration/Consignment/ConsignmentItem/Packaging/QuantityQuantity	Number of packages	The value should be the number of individual items packaged in such a way that they cannot be divided without first undoing the packing

eTIR field name	Mapping to the XML element (XPATH)	Description	Usage
⊣ Type, coded	Declaration/Consignment/ConsignmentItem/Packaging/TypeCode	Code of the packaging type	The value should be the code of the type of packing from the list Package type description code (UNECE Recommendation 21 Annex VI)
⊣ TRANSPORTEQUIPMENT	Declaration/Consignment/ConsignmentItem/TransportEquipment	Class representing the transport equipment used for the consignment item	
⊣ Identification	Declaration/Consignment/ConsignmentItem/TransportEquipment/ID	Identifier of the transport equipment	The value should be marks (letters and/or numbers) which identify the transport equipment
⊣ UCR	Declaration/Consignment/ConsignmentItem/UCR	Class representing the Unique Trader Reference	
⊣ Identifier	Declaration/Consignment/ConsignmentItem/UCR/ID	Unique identifier of the goods	The value should be the unique identifier assigned to goods being subject to cross border transactions
⊣ LOADINGLOCATION	Declaration/Consignment/LoadingLocation	Class representing the place of loading of the goods	
⊣ Name	Declaration/Consignment/LoadingLocation/Name	Name of the loading location	The value should be the name of a seaport, airport, freight terminal, rail station or other place at which goods are loaded onto the means of transport being used for their carriage
⊣ NOTIFYPARTY	Declaration/Consignment/NotifyParty	Class representing a potential party to be notified	
⊣ Name	Declaration/Consignment/NotifyParty/Name	Name of the party to be notified	The value should be the name (first and last name or company) of the party to be notified
⊣ Code	Declaration/Consignment/NotifyParty/ID	Unique identifier of the party to be notified	The value should be the unique identifier of the party to be notified
⊣ ADDRESS	Declaration/Consignment/NotifyParty/Address	Class representing the physical address of the party to be notified	
⊣ City name	Declaration/Consignment/NotifyParty/Address/CityName	City name of the physical address of the party to be notified	The value should be the city name of the physical address of the party to be notified
⊣ Country, coded	Declaration/Consignment/NotifyParty/Address/CountryCode	Code of the country of the physical address of the party to be notified	The value should be the code of the country of the physical address of the party to be notified from the list Country name code (ISO 3166-1-alpha-2)
⊣ Street and number/P.O. Box	Declaration/Consignment/NotifyParty/Address/Line	Street name of the physical address of the party to be notified	The value should be the street name and number (or equivalent) of the physical address of the party to be notified
⊣ Postcode identification	Declaration/Consignment/NotifyParty/Address/PostcodeID	Postal/Zip code of the physical address of the party to be notified	The value should be the postal/ZIP code of the physical address of the party to be notified
⊣ CUSTOMSOFFICEOFDEPARTURE	Declaration/Consignment/TransitDeparture	Class representing the customs office where the goods are loaded	

eTIR field name	Mapping to the XML element (XPATH)	Description	Usage
⊣ Code	Declaration/Consignment/TransitDeparture/ID	Unique identifier of the customs office of departure	The value should be the unique identifier used of the customs of departure, where the goods are loaded. This identifier is the one registered in the International TIR Data Bank (ITDB) for the customs office
⊣ CUSTOMSOFFICEOFDESTINATION	Declaration/Consignment/TransitDestination	Class representing the customs office where the goods are unloaded	
⊣ Code	Declaration/Consignment/TransitDestination/ID	Unique identifier of the customs office of destination	The value should be the unique identifier used of the customs of destination, where the goods are unloaded. This identifier is the one registered in the International TIR Data Bank (ITDB) for the customs office
⊣ TRANSPORTMEANS	Declaration/Consignment/TransitTransportMeans	List of the means of transport for the consignment	
⊣ Identification	Declaration/Consignment/TransitTransportMeans/ID	Unique identifier of the transport means	The value should be the unique identifier of the means of transport used for the transit
⊣ Type, coded	Declaration/Consignment/TransitTransportMeans/TypeCode	Code of the means of transport	The value should be the code of the means of transport from the list Transport means description code (UNECE Recommendation 28)
⊣ Nationality	Declaration/Consignment/TransitTransportMeans/RegistrationNationalityCode	Nationality of the means of transport	The value should be the code of the country for the nationality of the means of transport from the list Country name code (ISO 3166-1-alpha-2)
⊣ Conveyance reference number	Declaration/Consignment/TransitTransportMeans/JourneyID	Unique identifier of the journey	The value should be the unique identifier of the journey of a means of transport (for example voyage number, flight number or trip number)
⊣ COUNTRYOFROUTING	Declaration/Consignment/TransitTransportMeans/Itinerary	List of countries of the itinerary of the consignment	
⊣ Sequence number	Declaration/Consignment/TransitTransportMeans/Itinerary/SequenceNumeric	Index of the country in the list	The value should be the index (1-based) of the country in the list representing the itinerary of the consignment
⊣ Country, coded	Declaration/Consignment/TransitTransportMeans/Itinerary/RoutingCountryCode	Code of the country	The value should be the code of the country from the list Country name code (ISO 3166-1-alpha-2)
⊣ TRANSPORTEQUIPMENT	Declaration/Consignment/TransportEquipment	List of the transport equipment used for the consignment	
⊣ Sequence number	Declaration/Consignment/TransportEquipment/SequenceNumeric	Index of the transport equipment in the list	The value should be the index (1-based) of the transport equipment in the list

eTIR field name	Mapping to the XML element (XPATH)	Description	Usage
Size and type identification	Declaration/Consignment/TransportEquipment/CharacteristicCode	Code of the transport equipment	The value should be the code of the transport equipment (specifying its characteristics) from the list Equipment size and type description code (UN/EDIFACT 8155)
Identification	Declaration/Consignment/TransportEquipment/ID	Identifier of the transport equipment	The value should be marks (letters and/or numbers) which identify the transport equipment
CERTIFICATEOFAPPROVAL	Declaration/Consignment/TransportEquipment/AdditionalDocument	Class representing the certificate of approval document of the transport equipment	
Number	Declaration/Consignment/TransportEquipment/AdditionalDocument/ID	Unique identifier of the certificate of approval	The value should be the unique identifier of the certificate of approval
Issuing date	Declaration/Consignment/TransportEquipment/AdditionalDocument/IssueDateTime	Issuing date of the document	The value should be a date to be provided following the EDIFACT 102 format CCYYMMDD (https://www.unece.org/trade/untdid/d00a/tred/tred2379.htm). For Example: 20200820 represents 20 August 2020.
Type, coded	Declaration/Consignment/TransportEquipment/AdditionalDocument/TypeCode	Code of the type of file	The value should be the code of the type of the document from the list Document name code (UN/EDIFACT 1001)
BINARYFILE	Declaration/Consignment/TransportEquipment/AdditionalDocument/BinaryFile	The content of the document	
Identification	Declaration/Consignment/TransportEquipment/AdditionalDocument/BinaryFile/ID	Unique identifier of the file representing the document	The value should be an ID identifying the file and it should be unique among all other binary files of the declaration
Title	Declaration/Consignment/TransportEquipment/AdditionalDocument/BinaryFile/Title	Title of the document	The value should be the title of the document
Author name	Declaration/Consignment/TransportEquipment/AdditionalDocument/BinaryFile/AuthorName	Name of the author of the document	The value should be the first and last name of the author of the document
Version	Declaration/Consignment/TransportEquipment/AdditionalDocument/BinaryFile/VersionID	Version number of the document	The value should be the version of the document
File name	Declaration/Consignment/TransportEquipment/AdditionalDocument/BinaryFile/FileNameText	File name of the document	The value should be the name of the file representing the document, including the extension
URI	Declaration/Consignment/TransportEquipment/AdditionalDocument/BinaryFile/URIID	URI of the document	The value should be the Unique Resource Identifier (URI) allowing to access the document instead of relying on a binary object representation
MIME	Declaration/Consignment/TransportEquipment/AdditionalDocument/BinaryFile/MIMECode	Code of the MIME type of the file	The value should be one of the MIME types as listed by the IANA organization on the page: http://www.iana.org/assignments/media-types/media-types.xhtml

eTIR field name	Mapping to the XML element (XPATH)	Description	Usage
Encoding	Declaration/Consignment/TransportEquipment/AdditionalDocument/BinaryFile/EncodingCode	Code of the encoding algorithm of the file	The value should be the type of encoding algorithm used to encode the file
Character set	Declaration/Consignment/TransportEquipment/AdditionalDocument/BinaryFile/CharacterSetCode	Code of the character set of the file	The value should be the character set used in case the file is a text file
Include binary object	Declaration/Consignment/TransportEquipment/AdditionalDocument/BinaryFile/IncludedBinaryObjectBinaryObject	Binary representation of the file	The value should be the content of the file represented using the characteristics mentions in the other attributes (EncodingCode and CharacterSetCode)
Access	Declaration/Consignment/TransportEquipment/AdditionalDocument/BinaryFile/Access	Access information of the file	The value should be the information needed to access the file, such as security and download parameters. This is only useful when the file is accessible using the URIID parameter
Description	Declaration/Consignment/TransportEquipment/AdditionalDocument/BinaryFile/Description	Description of the document	The value should be the description of the document and explain what it contains
Size	Declaration/Consignment/TransportEquipment/AdditionalDocument/BinaryFile/SizeMeasure	Size of the file	The value should be the size of the file The unit should be defined in the Measure Unit. Code attribute and should match one of the values listed in the Measurement unit code (UNECE Recommendation 20)
Type	Declaration/Consignment/TransportEquipment/AdditionalDocument/BinaryFile/TypeCode	Code of the type of file	
Hash code	Declaration/Consignment/TransportEquipment/AdditionalDocument/BinaryFile/HashCode	Hash value of the file	The value should be the hash code string that resulted from hashing the attached file to be used for file reception validation
Hash code algorithm id	Declaration/Consignment/TransportEquipment/AdditionalDocument/BinaryFile/HashCodeAlgorithmIDCode	Code of the hash algorithm	The value should be the short name of the algorithm used to compute the hash value of the file
SEAL	Declaration/Consignment/TransportEquipment/Seal	List of seals affixed to the transport equipment	
Sequence number	Declaration/Consignment/TransportEquipment/Seal/SequenceNumeric	Index of the seal in the list	The value should be the index (1-based) of the seal in the list
Seal number	Declaration/Consignment/TransportEquipment/Seal/ID	Unique identifier of the seal	The value should be the unique identifier of the seal affixed to the transport equipment
Seal type code	Declaration/Consignment/TransportEquipment/Seal/TypeCode	Code of the type of seal	The value should be the code of the type of seal from the list Seal type code (eTIR)
GUARANTEE	Declaration/DeclarationGuarantee	Class representing the guarantee of this TIR transport	

eTIR field name	Mapping to the XML element (XPATH)	Description	Usage
Validity	Declaration/DeclarationGuarantee/ExpirationDateTime	Date of expiration of the guarantee	The value should be a date to be provided following the EDIFACT 102 format CCYYMMDD (https://www.unece.org/trade/untidd/d00a/tred/tred2379.htm). For Example: 20200820 represents 20 August 2020.
Reference	Declaration/DeclarationGuarantee/ReferenceID	Unique identifier of the guarantee	The value should be the unique identifier of the guarantee for this TIR transport
HOLDER	Declaration/Principal	Class representing the {holder-denomination} (transporter) of this transport	
Name	Declaration/Principal/Name	Name of the {holder-denomination}	The value should be the official company name, or the first and last name of the person in case of physical person as recorded in the International TIR Data Bank (ITDB), to allow for quick identification
Code	Declaration/Principal/ID	Unique identifier of the {holder-denomination}	The value should be the unique identifier of the {holder-denomination} as recorded in the International TIR Data Bank (ITDB)
ADDRESS	Declaration/Principal/Address	Class representing the physical address of the {holder-denomination}	
City name	Declaration/Principal/Address/CityName	City name of the physical address of the {holder-denomination}	The value should be the city name of the physical address of the {holder-denomination}
Country, coded	Declaration/Principal/Address/CountryCode	Code of the country of the physical address of the {holder-denomination}	The value should be the code of the country of the physical address of the {holder-denomination} from the list Country name code (ISO 3166-1-alpha-2)
Street and number/P.O. Box	Declaration/Principal/Address/Line	Street name of the physical address of the {holder-denomination}	The value should be the street name and number (or equivalent) of the physical address of the {holder-denomination}
Postcode identification	Declaration/Principal/Address/PostcodeID	Postal/Zip code of the physical address of the {holder-denomination}	The value should be the postal/ZIP code of the physical address of the {holder-denomination}



When reading the values of the second columns for both tables, note that the "InterGov/" XML base element has been removed to improve the readability, as it is repeated on every line.

6.3.5. Referred code lists

The following code lists are referred to in the field lists and should be considered when sending the message:

- [CL01](#) - Equipment size and type description code (UN/EDIFACT 8155)
- [CL02](#) - Party role code (UN/EDIFACT 3035)
- [CL04](#) - Country name code (ISO 3166-1-alpha-2)
- [CL05](#) - Transport means description code (UNECE Recommendation 28)
- [CL06](#) - Document name code (UN/EDIFACT 1001)
- [CL07](#) - Package type description code (UNECE Recommendation 21 Annex VI)
- [CL08](#) - Seal type code (eTIR)
- [CL14](#) - Indicator (eTIR)
- [CL16](#) - Message function code (UN/EDIFACT 1225)
- [CL17](#) - Amendment code (eTIR)
- [CL26](#) - Message types (eTIR)



All code lists are described in the [eTIR code lists document](#).

6.3.6. Conditions and Rules

The following conditions of the [eTIR conditions list](#) are referred to in the field lists and should be considered in the message:

- **C001:** IF EXIST(PARTY.code)
THEN NOT EMPTY(PARTY.code)
ELSE NOT EMPTY(PARTY.name , ADDRESS)
- **C002:** IF (PACKAGING.Type, coded) =
"VQ", "VG", "VL", "VY", "VR" OR "VO"
THEN EMPTY(PACKAGING.Number of packages)
ELSE (PACKAGING.Number of packages) > 0
- **C003:** IF(ADVANCE TIR DATA.ADDITIONALINFORMATION.Heavy and bulky goods
indicator) = 0
THEN NOT EMPTY(TRANSPORTEQUIPMENT)
ELSE EMPTY(TRANSPORTEQUIPMENT)
- **C004:** IF EMPTY(GOODS.CLASSIFICATION) OR (GOODS.CLASSIFICATION.Type) <> 'HS'
THEN NOT EMPTY(GOODS.Description)
- **C005:** IF(ADVANCE TIR DATA.ADDITIONALINFORMATION.Heavy and bulky goods
indicator) = 0
THEN NOT EMPTY(TRANSPORTMEANS.CERTIFICATEOFAPPROVAL)
ELSE EMPTY(TRANSPORTMEANS.CERTIFICATEOFAPPROVAL)
- **C008:** IF(MESSAGE.Message function, coded) = '1'
THEN EMPTY(ADDITIONALINFORMATION, AGENT,AMENDMENT, SUBCONTRACTOR,
CONSIGMENT,GUARANTEE,HOLDER) AND NOT EMPTY(MESSAGE.FunctionalReference)
ELSE IF(MESSAGE.Message function, coded) = '4'
THEN NOT EMPTY(MESSAGE.FunctionalReference, AMENDMENT,
ADDITIONALINFORMATION,
CONSIGMENT,GUARANTEE,HOLDER)

```
ELSE IF( MESSAGE.Message function, coded) = '9'
THEN EMPTY( MESSAGE.FunctionalReference, AMENDMENT ) AND NOT EMPTY
(ADDITIONALINFORMATION, CONSIGMENT, GUARANTEE, HOLDER )
```

The following rules of the [eTIR rules list](#) are referred to in the field lists and should be considered in the message:

- **R001:** Each country of transit shall have an unique sequence number. They should be numbered from 1 to the number of countries involved in the transit and represent the order in which countries are traveled from departure to destination. In case of multiple means of transport, this will also allow to determine in which order the means of transport are used.
- **R003:** Re-use a sequence number to indicate that a seal has been replaced.
- **R004:** Use new sequence number only to mention additional seals.
- **R005:** Indicate that a seal has been removed and not replaced with an "X" in the "seals number" field of the transport equipment sequence corresponding to the removed seal.
- **R008:** First occurrence of GOODS.CLASSIFICATION must be of type "HS"

6.3.7. Example

The example below shows the XML data to be sent via POST method to the [endpoint URL](#) to record the information related to the beginning of the TIR transport **16FRA3503000051123** related to the guarantee **XF95001234**. This eGuarantee was issued by the guarantee chain **IRU** on the date of **2001-01-01** at the customs office **FRO**. Note that the holder value is not provided here as this field is not mandatory.

I7 - Record declaration data request message

```
<?xml version="1.0" encoding="UTF-8"?>
<soap:Envelope xmlns:soap="http://www.w3.org/2003/05/soap-envelope" xmlns:cus="etir:v4.3:customs" xmlns:etir="
etir:I7:v4.3" xmlns:ds="etir:MetaData_DS:v4.3">
  <soap:Header xmlns:wsa="http://www.w3.org/2005/08/addressing">
    (...)
    <wsa:Action>etir:v4.3:customs/recordDeclarationData</wsa:Action>
    <wsa:MessageID>uuid:8a20af11-8170-432d-9563-6a89b32ef745</wsa:MessageID>
    (...)
  </soap:Header>
  <soap:Body xmlns:wsu="http://docs.oasis-open.org/wss/2004/01/oasis-200401-wss-wssecurity-utility-1.0.xsd" wsu:Id=
"id-da9c5c60-f393-4240-9fd5-54d54ffae83">
    <cus:recordDeclarationData>
      <etir:InterGov>
        <etir:FunctionCode>9</etir:FunctionCode>
        <etir:ID>123456</etir:ID>
        <etir:TypeCode>I7</etir:TypeCode>
        <etir:Declaration>
          <etir:FunctionCode>9</etir:FunctionCode>
          <etir:ID/>
          <etir:TypeCode>E9</etir:TypeCode>
          <etir:IssueDateTime formatCode="208" >20200229094536+0200</etir:IssueDateTime>
          <etir:VersionID>1</etir:VersionID>
          <!--Optional:-->
          <etir:AdditionalInformation>
            <etir:StatementCode>0</etir:StatementCode>
          </etir:AdditionalInformation>
          <!--Optional:-->
          <etir:Agent>
            <ds:ID>ZZZ</ds:ID>
            <ds:RoleCode>R1</ds:RoleCode>
          </etir:Agent>
          <!--Optional:-->
          <etir:Carrier>
```

```

<ds:ID>TU</ds:ID>
</etir:Carrier>
<!--Zero or more repetitions:-->
<etir:Consignment>
  <ds:SequenceNumeric>1</ds:SequenceNumeric>
  <!--Zero or more repetitions:-->
  <ds:AdditionalDocument>
    <ds:ID>attached_document</ds:ID>
    <ds:IssueDateTime formatCode="102" >20190801</ds:IssueDateTime>
    <ds:TypeCode>001</ds:TypeCode>
    <ds:BinaryFile>
      <ds:ID>1</ds:ID>
      <ds>Title>TITLE</ds>Title>
    </ds:BinaryFile>
  </ds:AdditionalDocument>
  <!--1 or more repetitions:-->
  <ds:ConsignmentItem>
    <ds:SequenceNumeric>1</ds:SequenceNumeric>
    <!--Zero or more repetitions:-->
    <ds:AdditionalInformation>
      <ds:Content>Additional information regarding the consignment item</ds:Content>
    </ds:AdditionalInformation>
    <ds:Commodity>
      <!--Optional: TO BE REMOVED-->
      <ds:CargoDescription>GoodsDescription</ds:CargoDescription>
      <!--Zero or more repetitions:-->
      <ds:Classification>
        <ds:ID>C1</ds:ID>
        <ds:IdentificationTypeCode>TY1</ds:IdentificationTypeCode>
      </ds:Classification>
    </ds:Commodity>
    <!--Optional:-->
    <ds:Consignee>
      <ds:ID>CE</ds:ID>
    </ds:Consignee>
    <!--Optional:-->
    <ds:Consignor>
      <ds:ID>CO</ds:ID>
    </ds:Consignor>
    <!--Optional:-->
    <ds:DeliveryDestination>
      <ds>Name>DeliveryDestination</ds>Name>
      <ds:Address>
        <ds:CityName>POITIERS</ds:CityName>
        <ds:CountryCode>FR</ds:CountryCode>
        <ds:Line>RUE DE LA BROUETTE DU VINAIGRIER</ds:Line>
        <ds:PostcodeID>49000</ds:PostcodeID>
      </ds:Address>
    </ds:DeliveryDestination>
    <ds:GoodsMeasure>
      <ds:GrossMassMeasure>123456</ds:GrossMassMeasure>
    </ds:GoodsMeasure>
    <ds:Packaging>
      <ds:TypeCode>V0</ds:TypeCode>          <!-- no quantity rule C002 !-->
    </ds:Packaging>
    <!--Optional:-->
    <ds:TransportEquipment>
      <ds:ID>TE1</ds:ID>
    </ds:TransportEquipment>
    <!--Optional:-->
    <ds:UCR>
      <!--Optional:-->
      <ds:ID>UCR</ds:ID>
    </ds:UCR>
  </ds:ConsignmentItem>
  <!--Optional:-->
  <ds>LoadingLocation>

```

```

<!--Optional:-->
  <ds:Name>loadingLoc</ds:Name>
</ds>LoadingLocation>
<!--Optional:-->
<ds:NotifyParty>
  <ds:ID>NP</ds:ID>
</ds:NotifyParty>
<ds:TransitDeparture>
  <ds:ID>FR0</ds:ID>
</ds:TransitDeparture>
<ds:TransitDestination>
  <ds:ID>FR0</ds:ID>
</ds:TransitDestination>
<!--1 or more repetitions:-->
<ds:TransitTransportMeans>
  <ds:ID>1234</ds:ID>
  <ds:TypeCode>TY1</ds:TypeCode>
  <ds:RegistrationNationalityCode>FR</ds:RegistrationNationalityCode>
  <ds:JoetireyID>JOUR1</ds:JoetireyID>
  <!--1 or more repetitions:-->
  <ds:Itinerary>
    <ds:SequenceNumeric>1</ds:SequenceNumeric>
    <ds:RoutingCountryCode>FR</ds:RoutingCountryCode>
  </ds:Itinerary>
  <ds:Itinerary>
    <ds:SequenceNumeric>2</ds:SequenceNumeric>
    <ds:RoutingCountryCode>FR</ds:RoutingCountryCode>
  </ds:Itinerary>
  <ds:Itinerary>
    <ds:SequenceNumeric>3</ds:SequenceNumeric>
    <ds:RoutingCountryCode>FR</ds:RoutingCountryCode>
  </ds:Itinerary>
</ds:TransitTransportMeans>
<!--Zero or more repetitions:-->
<ds:TransportEquipment>
  <ds:SequenceNumeric>1</ds:SequenceNumeric>
  <ds:CharacteristicCode>CC1</ds:CharacteristicCode>
  <ds:ID>TE1</ds:ID>
  <ds:AdditionalDocument>
    <ds:ID>CoA487321897232741</ds:ID>
    <ds:IssueDateTime formatCode="208" >20210701100342+0300</ds:IssueDateTime>
    <ds:TypeCode>CoA</ds:TypeCode>
    <ds:BinaryFile>
      <ds:ID>1</ds:ID>
      <ds>Title>Certificate of Approval</ds>Title>
    </ds:BinaryFile>
  </ds:AdditionalDocument>
  <!--Zero or more repetitions:-->
  <ds:Seal>
    <ds:SequenceNumeric>1</ds:SequenceNumeric>
    <ds:ID>sealId</ds:ID>
  </ds:Seal>
</ds:TransportEquipment>
</etir:Consignment>
<!--Zero or more repetitions:-->
<etir:DeclarationGuarantee>
  <etir:ReferenceID>XF95001234</etir:ReferenceID>
</etir:DeclarationGuarantee>
<!--Optional:-->
<!--principal mandatory for process even if not in wsdl-->
<etir:Principal>
  <etir:ID>FRA/020/998</etir:ID>
</etir:Principal>
</etir:Declaration>
</etir:InterGov>
</cus:recordDeclarationData>
</soap:Body>

```

</soap:Envelope>



Some field original contents have been shortened (...) in this document for the sake of readability, in particular the whole **header/security** content that is described in the [eTIR web services introduction document](#).

6.4. "I8 - Record declaration data results" response message

6.4.1. Description

The eTIR international system sends back the **I8 - Record declaration data results** response message to the national customs system to confirm the correct reception and recording of the declaration data as well as the national references for printing the accompanying document.

The XSD file related to the **I8 - Record declaration data results** message is available at the following URL: <https://www.unece.org/trans/bcf/etir/>.

6.4.2. Field list

eTIR field name	Mapping to the XML element (XPATH)	Mandatory	Format	Code lists	Conditions	Rules	WCO ID
MESSAGE							75B
└ Message function, coded	FunctionCode	R	n..2	CL16			017
└ Functional reference	FunctionalReferenceID		an..70				D026
└ Message identifier	ID	R	an..70				D014
└ Type, coded	TypeCode	R	an..3	CL26			D013
└ ADVANCETIRDATA	Declaration	R					
└ Message Identifier	Declaration/ID	R	an..70				D014
└ NATIONALREFERENCE	Declaration/NationalReference	O					91B
└ Reference	Declaration/NationalReference/ID	R	an..35				446
└ Country, coded	Declaration/NationalReference/IssuingCountryCode	R	a2	CL04			450
└ ERROR	Error	D			C006		53A
└ Error, coded	Error/ValidationCode	R	an..8	CL99			377
└ POINTER	Error/Pointer	R					97A
└ Sequence number	Error/Pointer/SequenceNumeric	O	n..5				006
└ Location	Error/Pointer/Location	R	an..512				512

6.4.3. Field descriptions

eTIR field name	Mapping to the XML element (XPATH)	Description	Usage
MESSAGE			

eTIR field name	Mapping to the XML element (XPATH)	Description	Usage
└ Message function, coded	FunctionCode	Code describing the function of the message	The value should be "44" if the request was processed correctly. If at least one error is described in this message, the value should be "27"
└ Functional reference	FunctionalReferenceID	Identifier of the request message associated with this response	The value should be the one mentioned in the message identifier field of the request message (17)
└ Message identifier	ID	Unique identifier of the message	The value should be a Globally Unique Identifier (GUID) as detailed in the dedicated section of the introduction document
└ Type, coded	TypeCode	Code of the message type	The value should be set to "18"
└ ADVANCETIRDATA	Declaration	Class representing the declaration data as accepted by customs	
└ Message Identifier	Declaration/ID	Unique identifier of the message E9 (or E11) received by the customs	The value should be the one from the "Message Identifier" attribute of the message E9 (or E11) received by the customs
└ NATIONALREFERENCE	Declaration/NationalReference	List of national references under which the declaration data has been saved in the countries along the itinerary of the transport	
└ Reference	Declaration/NationalReference/ID	Identifier of the national reference of the declaration	The value should be the identifier of the national reference under which the declaration has been saved in the country along the itinerary of the transport
└ Country, coded	Declaration/NationalReference/IssuingCountryCode	Code of the country along the itinerary	The value should be the code of the country along the itinerary from the Country name code (ISO 3166-1-alpha-2) list
└ ERROR	Error	List of errors, if any	
└ Error, coded	Error/ValidationCode	Code of the error type	The value should be the code of the error from the Error code (eTIR) list
└ POINTER	Error/Pointer	Pointer to the erroring field	
└ Sequence number	Error/Pointer/SequenceNumeric	Index of the error in the list	The value should be the 1-based index of the error in the list
└ Location	Error/Pointer/Location	Location of the erroring field	The value should be the location of the error field following the XPath syntax. Additional details regarding the location of the fields per error code are available on the page dedicated to errors



When reading the values of the second columns for both tables, note that the "InterGov/" XML base element has been removed to improve the readability, as it is repeated on every line.

6.4.4. Referred code lists

The following code lists are referred to in the field lists and should be considered when sending the message:

- **CL04** - Country name code (ISO 3166-1-alpha-2)
- **CL16** - Message function code (UN/EDIFACT 1225)
- **CL26** - Message types (eTIR)
- **CL99** - Error code (eTIR)



All code lists are described in the [eTIR code lists document](#).

6.4.5. Conditions and Rules

The following conditions of the [eTIR conditions list](#) are referred to in the field lists and should be considered in the message:

- **C006**: IF(MESSAGE.Message function, coded) = '6' OR '11' OR '44' OR '45'
THEN EMPTY(ERROR)
ELSE
IF(MESSAGE.Message function, coded) = '10' OR '27'
THEN NOT EMPTY(ERROR)

6.4.6. Applicable error codes

As the eTIR international system may return error codes, the [eTIR web services introduction document](#) contains a dedicated section describing how and where to find those error codes in the response messages. Find below the list of error codes that may be returned as part of the **18 - Record declaration data results** response message as well as the recommended actions to address them:

100 - Invalid Message

Kindly check the message itself and its format as it is not recognized by the eTIR international system.

101 - Missing Parameter

Kindly check the message parameters, in particular the parameters marked as mandatory in the message description section of this document, and make sure that all mandatory parameters are part of the message.

102 - Invalid Domain Value Parameter

Kindly check the coded parameter, its values and corresponding code lists. Make sure that each coded parameter is using one of the values of the corresponding code list.

103 - Malformed Date

Kindly check the date parameters and their format. Make sure that each date format has the format indicated and that the value follows the format/pattern.

104 - Not an integer

Kindly check the integer parameters. Make sure that each integer parameter has a value that can successfully be casted as an integer.

102 - Invalid Domain Value Parameter

Kindly check the coded parameter, its values and corresponding code lists. Make sure that each

coded parameter is using one of the values of the corresponding code list.

105 - Parameter length exceeded

Kindly check the parameter value lengths. Make sure that each parameter length does not exceed the max length as defined in the documentation in the Format column.

151 - Condition C001 failure

Kindly check the parameters constrained by the condition [C001] and make sure their values respect:

```
IF EXIST( PARTY.code )
THEN NOT EMPTY( PARTY.code )
ELSE NOT EMPTY( PARTY.name , ADDRESS ).
```

152 - Condition C002 failure

Kindly check the parameters constrained by the condition [C002] and make sure their values respect:

```
IF ( PACKAGING.Type, coded ) =
"VQ", "VG", "VL", "VY", "VR" OR "VO"
THEN EMPTY ( PACKAGING.Number of packages )
ELSE ( PACKAGING.Number of packages ) > 0.
```

153 - Condition C003 failure

Kindly check the parameters constrained by the condition [C003] and make sure their values respect:

```
IF( ADVANCE TIR DATA.ADDITIONALINFORMATION.Heavy and bulky goods
indicator ) = 0
THEN NOT EMPTY( TRANSPORTEQUIPMENT )
ELSE EMPTY( TRANSPORTEQUIPMENT ).
```

154 - Condition C004 failure

Kindly check the parameters constrained by the condition [C004] and make sure their values respect:

```
IF EMPTY( GOODS.CLASSIFICATION ) OR ( GOODS.CLASSIFICATION.Type ) <> 'HS'
THEN NOT EMPTY( GOODS.Description ).
```

155 - Condition C005 failure

Kindly check the parameters constrained by the condition [C005] and make sure their values respect:

```
IF( ADVANCE TIR DATA.ADDITIONALINFORMATION.Heavy and bulky goods
indicator ) = 0
THEN NOT EMPTY( TRANSPORTMEANS.CERTIFICATEOFAPPROVAL )
ELSE EMPTY( TRANSPORTMEANS.CERTIFICATEOFAPPROVAL ).
```

158 - Condition C008 failure

Kindly check the parameters constrained by the condition [C008] and make sure their values respect:

```
IF( MESSAGE.Message function, coded ) = '1'
THEN EMPTY( ADDITIONALINFORMATION, AGENT,AMENDMENT, SUBCONTRACTOR,
CONSIGMENT,GUARANTEE,HOLDER ) AND NOT EMPTY ( MESSAGE.FunctionalReference)
ELSE IF( MESSAGE.Message function, coded ) = '4'
THEN NOT EMPTY( MESSAGE.FunctionalReference, AMENDMENT,
ADDITIONALINFORMATION,
CONSIGMENT,GUARANTEE,HOLDER )
ELSE IF( MESSAGE.Message function, coded ) = '9'
THEN EMPTY( MESSAGE.FunctionalReference, AMENDMENT ) AND NOT EMPTY
```

(ADDITIONALINFORMATION, CONSIGNMENT,GUARANTEE,HOLDER).

200 - Invalid State

Kindly check the state of the referred object (transport, guarantee, ...) and make sure it is consistent with the eTIR international system requested web service called.

300 - Invalid Operation

Kindly check the message content as it triggered a technical error in the eTIR international system but that this one could not identify the source of the issue.

301 - Guarantee not found

Kindly check the value of the guarantee reference ID in the message and make sure it matches the value received in previous messages.

302 - Guarantee chain not found

Kindly check the value of the guarantee chain ID in the message and make sure it matches the value received in previous messages.

303 - Guarantee type not found

Kindly check the value of the guarantee type in the message and make sure it belongs to the [Guarantee type code \(eTIR\)](#) code list, and that it matches the value received in previous messages.

304 - Customs Office not found

Kindly check the format and value of the customs office ID in the message and make sure it matches the value received in previous messages. If it does, kindly check the existence of the customs office and its status using ITDB web service or ITDB web application.

305 - Country not found

Kindly check the value of the country code in the message and make sure it matches the value received in previous messages and that it belongs to the [Country name code \(ISO 3166-1-alpha-2\) code list \(CL04\)](#).

400 - eTIR Problem

Kindly contact eTIR support (see [Support and contact](#)) sending the content of the message communicated, the timestamps and the steps to reproduce this issue in order to address this issue.



The full list of error codes can be found on the [dedicated error code list web page](#).

6.4.7. Example

The example below shows the XML data of the **I8 - Record declaration data results** message received in response to the POST of the **I7 - Record declaration data** message. This response message (Function code **44 - Accepted without reserves**) of the type **I8**, containing no error codes, describes a positive acknowledgment for the cargo information recording related to the guarantee reference ID **XF95001234**. Therefore, it should be considered that the TIR transport cargo information recording is accepted by the eTIR international system.



It is important to understand that the absence of error in the **I8 - Record declaration data results** response message is the key indicator to reflect that the record of the declaration data is accepted.

I8 - Record declaration data results response message

```
<?xml version="1.0" encoding="UTF-8"?>
<soap:Envelope xmlns:soap="http://www.w3.org/2003/05/soap-envelope" xmlns:cus="etir:v4.3:customs" xmlns:etir="
"etir:I8:v4.3">
  <soap:Header xmlns:wsa="http://www.w3.org/2005/08/addressing">
    (...)
    <wsa:Action>etir:v4.3:customs/recordDeclarationDataResponse</wsa:Action>
    <wsa:MessageID>uuid:8350af11-8170-495d-9563-6a87e32ef745</wsa:MessageID>
    (...)
  </soap:Header>
  <soap:Body xmlns:wsu="http://docs.oasis-open.org/wss/2004/01/oasis-200401-wss-wssecurity-utility-1.0.xsd" wsu:Id=
"Id-c64dca31-aaf8-4232-a9b3-03c89698547b">
    <cus:recordDeclarationDataResponse>
      <etir:InterGov>
        <etir:FunctionCode>44</etir:FunctionCode>
        <etir:TypeCode>I8</etir:TypeCode>
        <etir:Declaration>
          <etir:ID>XF95001234</etir:ID>
          <etir:NationalReference>
            <etir:ID>TIR457348137800</etir:ID>
            <etir:IssuingCountryCode>IR</etir:IssuingCountryCode>
          </etir:NationalReference>
          <etir:NationalReference>
            <etir:ID>34ec6a74-7c6e-4b74-8904-d16cf76235e5</etir:ID>
            <etir:IssuingCountryCode>AZ</etir:IssuingCountryCode>
          </etir:NationalReference>
        </etir:Declaration>
      </etir:InterGov>
    </cus:recordDeclarationDataResponse>
  </soap:Body>
</soap:Envelope>
```



Some field original contents have been shortened (...) in this document for the sake of readability, in particular the whole **header/security** content that is described in the [eTIR web services introduction document](#).

7. Fallback procedures

In the event that the **I7 - Record declaration data** could not be sent after several attempts or if no **I8 - Record declaration data results** was received in response, we recommend the national customs systems team to contact eTIR support ([Support and contact](#)).

Also note that the functional fallback procedures can be found in the [Approved amendments to the eTIR conceptual, functional and technical documentation](#).

8. Support and contact

Kindly note that in the context of the interconnections projects by customs, the TIR secretariat stands ready to assist contracting parties while interconnecting their national customs systems to the eTIR international system. Also in case of questions or issues related to this document or to the eTIR international system, you can use the contact details below (contacts by email should be preferred).

Organization United Nations Economic Commission For Europe
TIR secretariat
Palais des Nations,
1211 Geneva 10, Switzerland

Contact Email: etir@un.org
Phone: +41 (0)22 917 55 06

9. Annexes

9.1. Version history

Date	Author	Version	Notes	eTIR specification version reference
23/11/2020	TIR Secretariat	1.0	Initial draft	4.3a

9.2. XSD Files content

9.2.1. Request format

The I7 - **Record declaration data** message should follow the format expressed by the XSD below:

I7 - Record declaration data request message format

```
<?xml version="1.0" encoding="UTF-8"?>
<xs:schema xmlns:I7_1p0="etir:I7:v4.3"
  xmlns:xs="http://www.w3.org/2001/XMLSchema"
  xmlns:ds="etir:MetaData_DS:v4.3"
  targetNamespace="etir:I7:v4.3"
  elementFormDefault="qualified">
  <xs:import namespace="etir:MetaData_DS:v4.3" schemaLocation="WCO_MetaData_DS.xsd"/>
  <xs:element name="InterGov">
    <xs:annotation>
      <xs:documentation>
        <eTIRName>Message</eTIRName>
        <Disclaimer>
          Usage and disclaimer clause
```

This(ese) schema(s) may be used, copied, amended and furnished to others in whole or in part, without restriction of any kind other than the obligation to keep this usage and disclaimer clause in it (them) and the references to UNECE. However, once modified, schemas may no longer be distributed under the name of UNECE.

Disclaimer: These schemas are provided "as is", without warranty of any kind, either express or implied, including, without limitation, warranties of merchantability, fitness for a particular purpose and non-infringement. The United Nations specifically does not make any warranties or representations as to the accuracy or completeness of any such schemas. The United Nations may add, change, improve or update the schemas without notice. Under no circumstances shall the United Nations be liable for any loss, damage, liability or expense incurred or suffered that is claimed to have resulted from the use of these schemas, including, without limitation, any fault, error, omission, interruption or delay with respect thereto. Under no circumstances, including but not limited to negligence, shall the United Nations or its affiliates be liable for any direct, indirect, incidental, special or consequential damages, even if the United Nations has been advised of the possibility of such damages.

The user specifically acknowledges and agrees that the United Nations is not liable for any conduct of any user. As a condition of using these schemas, the user agrees to indemnify the United Nations and its affiliates from and against any actions, claims, losses, damages, liabilities and expenses arising out of the user's use of these schemas. If the user is dissatisfied with any schema, the user's sole and exclusive remedy is to discontinue using such schemas.

Nothing herein shall constitute or be considered to be a limitation upon or a waiver of the privileges and immunities of the United Nations, which are specifically reserved.

```
</Disclaimer>
</xs:documentation>
</xs:annotation>
<xs:complexType>
  <xs:sequence>
    <xs:element name="FunctionCode" type="ds:InterGovFunctionCodeType">
      <xs:annotation>
        <xs:documentation xml:lang="EN">
          <Format>n..2</Format>
        </xs:documentation>
        <xs:documentation>
          <eTIRName>Message function, coded</eTIRName>
          <CodeList>CL16</CodeList>
          <Status>R</Status>
          <RestrictedCode>4</RestrictedCode>
          <RestrictedCode>9</RestrictedCode>
        </xs:documentation>
      </xs:annotation>
    </xs:element>
    <xs:element name="ID" type="ds:InterGovIdentificationIDType">
      <xs:annotation>
        <xs:documentation xml:lang="EN">
          <Format>an..70</Format>
        </xs:documentation>
```



```

<xs:documentation>
  <eTIRName>Message identifier</eTIRName>
  <Status>R</Status>
</xs:documentation>
</xs:annotation>
</xs:element>
<xs:element name="TypeCode" type="ds:InterGovTypeCodeType">
  <xs:annotation>
    <xs:documentation xml:lang="EN">
      <Format>an..3</Format>
    </xs:documentation>
    <xs:documentation>
      <eTIRName>Type, coded</eTIRName>
      <CodeList>CL26</CodeList>
      <Status>R</Status>
      <RestrictedCode>I7</RestrictedCode>
    </xs:documentation>
  </xs:annotation>
</xs:element>
<xs:element name="Declaration">
  <xs:annotation>
    <xs:documentation>
      <eTIRName>AdvanceTIRData</eTIRName>
      <Status>R</Status>
    </xs:documentation>
  </xs:annotation>
  <xs:complexType>
    <xs:sequence>
      <xs:element name="FunctionCode" type="ds:DeclarationFunctionCodeType">
        <xs:annotation>
          <xs:documentation xml:lang="EN">
            <Format>n..2</Format>
          </xs:documentation>
          <xs:documentation>
            <eTIRName>Message function, coded</eTIRName>
            <CodeList>CL16</CodeList>
            <Status>R</Status>
            <RestrictedCode>4</RestrictedCode>
            <RestrictedCode>9</RestrictedCode>
          </xs:documentation>
        </xs:annotation>
      </xs:element>
      <xs:element name="FunctionalReferenceID" type="ds:DeclarationFunctionalReferenceIDType" minOccurs="0">
        <xs:annotation>
          <xs:documentation xml:lang="EN">
            <Format>an..70</Format>
          </xs:documentation>
          <xs:documentation>
            <eTIRName>Functional reference</eTIRName>
            <Status>D</Status>
            <ConditionId>C008</ConditionId>
          </xs:documentation>
        </xs:annotation>
      </xs:element>
      <xs:element name="ID" type="ds:DeclarationIdentificationIDType">
        <xs:annotation>
          <xs:documentation xml:lang="EN">
            <Format>an..70</Format>
          </xs:documentation>
          <xs:documentation>
            <eTIRName>Message Identifier</eTIRName>
            <Status>R</Status>
          </xs:documentation>
        </xs:annotation>
      </xs:element>
      <xs:element name="IssueDateTime" type="ds:EtirDateTimeType">
        <xs:annotation>

```

```

<xs:documentation xml:lang="EN">
  <Format>an..35</Format>
</xs:documentation>
<xs:documentation>
  <eTIRName>Issuing date</eTIRName>
  <Status>R</Status>
  <DateTimeFormatCode>304 (CCYYMMDDHHMSSZZZ)</DateTimeFormatCode>
</xs:documentation>
</xs:annotation>
</xs:element>
<xs:element name="TypeCode" type="ds:DeclarationTypeCodeType">
  <xs:annotation>
    <xs:documentation xml:lang="EN">
      <Format>an..3</Format>
    </xs:documentation>
    <xs:documentation>
      <eTIRName>Type, coded</eTIRName>
      <CodeList>CL26</CodeList>
      <Status>R</Status>
      <RestrictedCode>E9</RestrictedCode>
    </xs:documentation>
  </xs:annotation>
</xs:element>
<xs:element name="VersionID" type="ds:DeclarationVersionIDType">
  <xs:annotation>
    <xs:documentation xml:lang="EN">
      <Format>an..9</Format>
    </xs:documentation>
    <xs:documentation>
      <eTIRName>Version</eTIRName>
      <Status>R</Status>
    </xs:documentation>
  </xs:annotation>
</xs:element>
<xs:element name="TotalGrossMassMeasure" type="ds:DeclarationTotalGrossMassMeasureType" minOccurs="0">
  <xs:annotation>
    <xs:documentation xml:lang="EN">
      <Format>n..16,6</Format>
    </xs:documentation>
    <xs:documentation>
      <eTIRName>Total gross weight</eTIRName>
      <Status>0</Status>
    </xs:documentation>
  </xs:annotation>
</xs:element>
<xs:element name="AdditionalInformation" minOccurs="0">
  <xs:annotation>
    <xs:documentation>
      <eTIRName>AdditionalInformation</eTIRName>
      <Status>D</Status>
      <ConditionId>C008</ConditionId>
    </xs:documentation>
  </xs:annotation>
  <xs:complexType>
    <xs:sequence>
      <xs:element name="StatementCode" type="ds:AdditionalInformationStatementCodeType">
        <xs:annotation>
          <xs:documentation xml:lang="EN">
            <Format>an..17</Format>
          </xs:documentation>
          <xs:documentation>
            <eTIRName>Heavy and bulky goods indicator</eTIRName>
            <CodeList>CL14</CodeList>
            <Status>R</Status>
            <RestrictedCode>0</RestrictedCode>
            <RestrictedCode>1</RestrictedCode>
          </xs:documentation>
        </xs:annotation>
      </xs:element>
    </xs:sequence>
  </xs:complexType>

```

```

        </xs:annotation>
    </xs:element>
    <xs:element name="StatementDescription" type=
"ds:AdditionalInformationStatementDescriptionTextType" minOccurs="0">
        <xs:annotation>
            <xs:documentation xml:lang="EN">
                <Format>an..512</Format>
            </xs:documentation>
            <xs:documentation>
                <eTIRName>Remarks</eTIRName>
                <Status>0</Status>
            </xs:documentation>
        </xs:annotation>
    </xs:element>
</xs:sequence>
</xs:complexType>
</xs:element>
<xs:element name="Agent" minOccurs="0" type="ds:Agent" />
<xs:element name="Amendment" minOccurs="0" maxOccurs="unbounded">
    <xs:annotation>
        <xs:documentation>
            <eTIRName>Amendment</eTIRName>
            <Status>D</Status>
            <ConditionId>C008</ConditionId>
        </xs:documentation>
    </xs:annotation>
    <xs:complexType>
        <xs:sequence>
            <xs:element name="ChangeReasonCode" type="ds:AmendmentChangeReasonCodeType">
                <xs:annotation>
                    <xs:documentation xml:lang="EN">
                        <Format>an..3</Format>
                    </xs:documentation>
                    <xs:documentation>
                        <eTIRName>Amendment code</eTIRName>
                        <CodeList>CL17</CodeList>
                        <Status>R</Status>
                    </xs:documentation>
                </xs:annotation>
            </xs:element>
            <xs:element name="Pointer" maxOccurs="unbounded">
                <xs:complexType>
                    <xs:sequence>
                        <xs:element name="SequenceNumeric"
                            type="ds:PointerSequenceNumericType"/>
                        <xs:element name="Location" type="ds:PointerLocationTextType"/>
                    </xs:sequence>
                </xs:complexType>
            </xs:element>
        </xs:sequence>
    </xs:complexType>
</xs:element>
<xs:element name="Carrier" minOccurs="0" maxOccurs="unbounded" type="ds:Party"/>
<xs:element name="Consignment" minOccurs="0" maxOccurs="unbounded" type="ds:Consignment" />
<xs:element name="DeclarationGuarantee">
    <xs:annotation>
        <xs:documentation>
            <eTIRName>Guarantee</eTIRName>
            <Status>D</Status>
            <ConditionId>C008</ConditionId>
        </xs:documentation>
    </xs:annotation>
    <xs:complexType>
        <xs:sequence>
            <xs:element name="ExpirationDateTime" type="ds:EtirDateTimeType">
                <xs:annotation>
                    <xs:documentation>

```

```

        <Format>an..35</Format>
        <eTIRName>Validity</eTIRName>
        <Status>R</Status>
        <DateTimeFormatCode>102 (CCYYMMDD)</DateTimeFormatCode>
    </xs:documentation>
</xs:annotation>
</xs:element>
<xs:element name="ReferenceID" type="ds:DeclarationGuaranteeReferenceIDType">
    <xs:annotation>
        <xs:documentation xml:lang="EN">
            <Format>an..35</Format>
        </xs:documentation>
        <xs:documentation>
            <eTIRName>Reference</eTIRName>
            <Status>R</Status>
        </xs:documentation>
    </xs:annotation>
</xs:element>
</xs:sequence>
</xs:complexType>
</xs:element>
<xs:element name="Principal" minOccurs="0">
    <xs:annotation>
        <xs:documentation>
            <eTIRName>Holder</eTIRName>
            <Status>D</Status>
            <ConditionId>C008</ConditionId>
        </xs:documentation>
    </xs:annotation>
    <xs:complexType>
        <xs:sequence>
            <xs:element name="Name" type="ds:PrincipalNameTextType" minOccurs="0">
                <xs:annotation>
                    <xs:documentation xml:lang="EN">
                        <Format>an..70</Format>
                    </xs:documentation>
                    <xs:documentation>
                        <eTIRName>Name</eTIRName>
                        <Status>0</Status>
                    </xs:documentation>
                </xs:annotation>
            </xs:element>
            <xs:element name="ID" type="ds:PrincipalIdentificationIDType">
                <xs:annotation>
                    <xs:documentation xml:lang="EN">
                        <Format>an..35</Format>
                    </xs:documentation>
                    <xs:documentation>
                        <eTIRName>Code</eTIRName>
                        <Status>R</Status>
                    </xs:documentation>
                </xs:annotation>
            </xs:element>
            <xs:element name="Address" minOccurs="0" type="ds:Address"/>
        </xs:sequence>
    </xs:complexType>
</xs:element>
</xs:sequence>
</xs:complexType>
</xs:element>
</xs:sequence>
</xs:complexType>
</xs:element>
</xs:sequence>
</xs:complexType>
</xs:element>
</xs:schema>

```



The original disclaimer field content has been shortened (...) in this document for the sake of readability.

9.2.2. Response format

The **I8 - Record declaration data results** message should follow the format expressed by the XSD below:

I8 - Record declaration data results response message format

```
<?xml version="1.0" encoding="UTF-8"?>
<xs:schema xmlns:I8_1p0="etir:I8:v4.3"
  xmlns:xs="http://www.w3.org/2001/XMLSchema"
  xmlns:ds="etir:MetaData_DS:v4.3"
  targetNamespace="etir:I8:v4.3"
  elementFormDefault="qualified">
  <xs:import namespace="etir:MetaData_DS:v4.3" schemaLocation="WCO_MetaData_DS.xsd"/>
  <xs:element name="InterGov">
    <xs:annotation>
      <xs:documentation>
        <eTIRName>Message</eTIRName>
        <Disclaimer>
          Usage and disclaimer clause
        </Disclaimer>
      </xs:documentation>
    </xs:annotation>
  </xs:element>
  <xs:complexType base="InterGov" name="InterGovType">
    <xs:sequence>
      <xs:element name="FunctionCode" type="ds:InterGovFunctionCodeType">
        <xs:annotation>
          <xs:documentation xml:lang="EN">
            <Format>n..2</Format>
          </xs:documentation>
          <xs:documentation>
            <eTIRName>Message function, coded</eTIRName>
            <CodeList>CL16</CodeList>
            <Status>R</Status>
            <RestrictedCode>27</RestrictedCode>
            <RestrictedCode>44</RestrictedCode>
          </xs:documentation>
        </xs:annotation>
      </xs:element>
      <xs:element name="FunctionalReferenceID" type="ds:InterGovFunctionalReferenceIDType">
        <xs:annotation>
          <xs:documentation xml:lang="EN">
            <Format>an..70</Format>
          </xs:documentation>
          <xs:documentation>
            <eTIRName>Functional reference</eTIRName>
          </xs:documentation>
        </xs:annotation>
      </xs:element>
    </xs:sequence>
  </xs:complexType>
</xs:schema>
```

This(ese) schema(s) may be used, copied, amended and furnished to others in whole or in part, without restriction of any kind other than the obligation to keep this usage and disclaimer clause in it (them) and the references to UNECE. However, once modified, schemas may no longer be distributed under the name of UNECE.

Disclaimer: These schemas are provided "as is", without warranty of any kind, either express or implied, including, without limitation, warranties of merchantability, fitness for a particular purpose and non-infringement. The United Nations specifically does not make any warranties or representations as to the accuracy or completeness of any such schemas. The United Nations may add, change, improve or update the schemas without notice. Under no circumstances shall the United Nations be liable for any loss, damage, liability or expense incurred or suffered that is claimed to have resulted from the use of these schemas, including, without limitation, any fault, error, omission, interruption or delay with respect thereto. Under no circumstances, including but not limited to negligence, shall the United Nations or its affiliates be liable for any direct, indirect, incidental, special or consequential damages, even if the United Nations has been advised of the possibility of such damages.

The user specifically acknowledges and agrees that the United Nations is not liable for any conduct of any user. As a condition of using these schemas, the user agrees to indemnify the United Nations and its affiliates from and against any actions, claims, losses, damages, liabilities and expenses arising out of the user's use of these schemas. If the user is dissatisfied with any schema, the user's sole and exclusive remedy is to discontinue using such schemas.

Nothing herein shall constitute or be considered to be a limitation upon or a waiver of the privileges and immunities of the United Nations, which are specifically reserved.

</Disclaimer>

</xs:documentation>

</xs:annotation>

<xs:complexType>

<xs:sequence>

<xs:element name="FunctionCode" type="ds:InterGovFunctionCodeType">

<xs:annotation>

<xs:documentation xml:lang="EN">

<Format>n..2</Format>

</xs:documentation>

<xs:documentation>

<eTIRName>Message function, coded</eTIRName>

<CodeList>CL16</CodeList>

<Status>R</Status>

<RestrictedCode>27</RestrictedCode>

<RestrictedCode>44</RestrictedCode>

</xs:documentation>

</xs:annotation>

</xs:element>

<xs:element name="FunctionalReferenceID" type="ds:InterGovFunctionalReferenceIDType">

<xs:annotation>

<xs:documentation xml:lang="EN">

<Format>an..70</Format>

</xs:documentation>

<xs:documentation>

<eTIRName>Functional reference</eTIRName>

```

</xs:documentation>
</xs:annotation>
</xs:element>
<xs:element name="ID" type="ds:InterGovIdentificationIDType">
  <xs:annotation>
    <xs:documentation xml:lang="EN">
      <Format>an..70</Format>
    </xs:documentation>
    <xs:documentation>
      <eTIRName>Message identifier</eTIRName>
      <Status>R</Status>
    </xs:documentation>
  </xs:annotation>
</xs:element>
<xs:element name="TypeCode" type="ds:InterGovTypeCodeType">
  <xs:annotation>
    <xs:documentation xml:lang="EN">
      <Format>an..3</Format>
    </xs:documentation>
    <xs:documentation>
      <eTIRName>Type, coded</eTIRName>
      <CodeList>CL26</CodeList>
      <RestrictedCode>I8</RestrictedCode>
      <Status>R</Status>
    </xs:documentation>
  </xs:annotation>
</xs:element>
<xs:element name="Declaration">
  <xs:annotation>
    <xs:documentation>
      <eTIRName>AdvanceTIRData</eTIRName>
      <Status>R</Status>
    </xs:documentation>
  </xs:annotation>
  <xs:complexType>
    <xs:sequence>
      <xs:element name="ID" type="ds:DeclarationIdentificationIDType">
        <xs:annotation>
          <xs:documentation xml:lang="EN">
            <Format>an..70</Format>
          </xs:documentation>
          <xs:documentation>
            <eTIRName>Message Identifier</eTIRName>
            <Status>R</Status>
          </xs:documentation>
        </xs:annotation>
      </xs:element>
      <xs:element name="NationalReference" minOccurs="0" maxOccurs="unbounded">
        <xs:annotation>
          <xs:documentation>
            <eTIRName>NationalReference</eTIRName>
            <Status>0</Status>
          </xs:documentation>
        </xs:annotation>
        <xs:complexType>
          <xs:sequence>
            <xs:element name="ID" type="ds:NationalReferenceIdentificationIDType">
              <xs:annotation>
                <xs:documentation xml:lang="EN">
                  <Format>an..35</Format>
                </xs:documentation>
                <xs:documentation>
                  <eTIRName>Reference</eTIRName>
                  <Status>R</Status>
                </xs:documentation>
              </xs:annotation>
            </xs:element>

```

```
<xs:element name="IssuingCountryCode" type="ds:NationalReferenceIssuingCountryCodeType">
  <xs:annotation>
    <xs:documentation xml:lang="EN">
      <Format>a2</Format>
    </xs:documentation>
    <xs:documentation>
      <CodeList>CL04</CodeList>
      <eTIRName>Country, coded</eTIRName>
      <Status>R</Status>
    </xs:documentation>
  </xs:annotation>
</xs:element>
</xs:sequence>
</xs:complexType>
</xs:element>
</xs:sequence>
</xs:complexType>
</xs:element>
<xs:element name="Error" type="ds:Error" minOccurs="0" maxOccurs="unbounded"/>
</xs:sequence>
</xs:complexType>
</xs:element>
</xs:schema>
```



Some field original contents have been shortened (...) in this document for the sake of readability, in particular the whole **header/security** content that is described in the [eTIR web services introduction document](#).



All XSD files can be downloaded on the [dedicated page of the eTIR documentation portal](#).