

eTIR web services - Messages I7-I8

I7 - Record declaration data / I8 - Record declaration data results



Table of Contents

1. Document revision note	1
2. Related documents	1
3. Purpose	2
4. Target audience	2
5. Prerequisites	2
6. "I7 - Record declaration data" / "I8 - Record declaration data results" messages	4
6.1. Sequence diagram	4
6.1.1. Departure	4
6.1.2. Transit	5
6.1.3. Destination	6
6.2. Message context	7
6.2.1. Message prerequisites	7
Original declaration data	7
Amended declaration data	8
6.2.2. Endpoint URL	8
6.3. "I7 - Record declaration data" request message	8
6.3.1. Description	8
6.3.2. Field list	9
6.3.3. Field descriptions	15
6.3.4. Referred code lists	27
6.3.5. Conditions and Rules	27
6.3.6. How the national customs system should prepare and send declaration data	28
Case of the original declaration	28
Case of an amendment to the declaration	28
6.3.7. Example	29
6.4. "I8 - Record declaration data results" response message	33
6.4.1. Description	33
6.4.2. Field list	33
6.4.3. Field descriptions	33
6.4.4. Referred code lists	36
6.4.5. Conditions and Rules	36
6.4.6. How to use response data in the national customs systems	36
6.4.7. Applicable error codes	36
6.4.8. Example	40
7. Fallback procedures	41
8. Support and contact	41
9. Annexes	41
9.1. Version history	41
9.2. More examples	42
9.2.1. Example 1: additional consignment	42
9.2.2. Example 2: Itinerary change	46

1. Document revision note



This document has been published on **19/05/2021**, and is valid for the **eTIR international system version 1.0** based on the **eTIR specifications version 4.3a**.

Please ensure you get the latest version of this document from the [eTIR documentation portal](#) or contact the eTIR service desk ([Support and contact](#)).

2. Related documents

Project documents and collaboration platform

- eTIR documentation portal: <https://wiki.unece.org/display/ED/eTIR+documentation+-+Homepage>
- Project guidelines for customs to connect to the eTIR international system : <https://wiki.unece.org/download/attachments/106299939/Project%20Guidelines%20for%20customs%20to%20connect%20to%20the%20eTIR%20international%20system.pdf>
- eTIR web services - Introduction document: <https://wiki.unece.org/download/attachments/106299935/eTIR%20web%20services%20-%20Introduction%20document.pdf>
- eTIR web services - Messages I1-I2: I1 - Accept guarantee / I2 - Acceptance results <https://wiki.unece.org/download/attachments/106299935/eTIR-IS-I1-I2-messages-documentation.pdf>
- eTIR web services - Messages I5-I6: I5 - Query guarantee / I6 - Query results <https://wiki.unece.org/download/attachments/106299935/eTIR-IS-I5-I6-messages-documentation.pdf>
- eTIR web services - Messages I9-I10: I9 - Start TIR operation / I10 - Start results <https://wiki.unece.org/download/attachments/106299935/eTIR-IS-I9-I10-messages-documentation.pdf>
- eTIR web services - Messages I11-I12: I11 - Terminate TIR operation / I12 - Termination results <https://wiki.unece.org/download/attachments/106299935/eTIR-IS-I11-I12-messages-documentation.pdf>
- eTIR web services - Messages I13-I14: I13 - Discharge TIR operation / I14 - Discharge results <https://wiki.unece.org/download/attachments/106299935/eTIR-IS-I13-I14-messages-documentation.pdf>
- eTIR web services - Messages I17-I18: I17 - Refusal to start TIR operation / I18 - Refusal results <https://wiki.unece.org/download/attachments/106299935/eTIR-IS-I17-I18-messages-documentation.pdf>

Legal framework

- TIR Convention handbook: <https://unece.org/transport/publications/tir-handbook-0>
- Annex 11 to the TIR Convention: <https://unece.org/DAM/trans/bcf/ac2/documents/2020/ECE-TRANS-WP30-AC2-2020-07e.pdf>

eTIR specifications

- Introduction to the eTIR conceptual, functional and technical v4.3: https://unece.org/sites/default/files/2021-03/WP30_GE1_id21-01e.pdf
- eTIR concepts v4.2: http://www.unece.org/fileadmin/DAM/trans/bcf/adhoc/conc_tech/documents/id17-06e.pdf

- eTIR Functional specifications v4.2: http://www.unece.org/fileadmin/DAM/trans/bcf/adhoc/conc_tech/documents/id17-07e.pdf
- Approved amendments to the eTIR specifications v4.2 to prepare v4.3: <http://www.unece.org/fileadmin/DAM/trans/bcf/wp30/documents/2020/ECE-TRANS-WP30-2020-07e.pdf>

Additional resources

- eTIR XML schemas: <https://wiki.unece.org/display/ED/Technical+artefacts>
- eTIR code lists: https://www.unece.org/fileadmin/DAM/trans/bcf/eTIR/documents/CodeLists0_4.pdf
- List of eTIR focal points: <https://unece.org/list-etir-focal-points>

3. Purpose

This document describes the **I7 - Record declaration data** request message, and the **I8 - Record declaration data results** response message of the eTIR international system web services. It provides all the specifics required to use them (prepare or receive), explains how and when they should be used and explains the error codes that may be returned. It also contains examples and fallback procedures, if applicable.

4. Target audience

This guide is intended for the ICT team of the customs authorities in charge of interconnecting their national customs system to the eTIR international system.

5. Prerequisites



In order to ensure an implementation that delivers the best value and services to the customs authorities, we recommend for the ICT team in charge of establishing the connection to the eTIR international system web services to be accompanied by a TIR subject matter expert.

This document is to be read after having an understanding of the [eTIR concepts](#) and having read the [eTIR functional specifications](#). It is highly recommended keeping the [eTIR web services introduction document](#) at hand as the current document refers to many elements and diagrams available in that document.

From a technical perspective, the following steps should have been completed at this point:

- A secured connection to the User Acceptance Testing (UAT) environment of the eTIR international system is established;
- The endpoint URL to the UAT environment is clearly identified and properly configured in the national customs systems;
- **The national customs system notification endpoint URL has been communicated to the TIR Secretariat's team, and is configured and accessible to the eTIR international system.**
- **The customs authorities fallback email address has been communicated to the TIR Secretariat's team and configured in the eTIR international system to the eTIR international system.**
- All the actions mentioned in the [prerequisites section](#) of the eTIR web services introduction document are performed;

- All the tools required to prepare, receive, test and troubleshoot the messages are ready.
- eTIR web services - Messages 11-12 should have been implemented and tested.



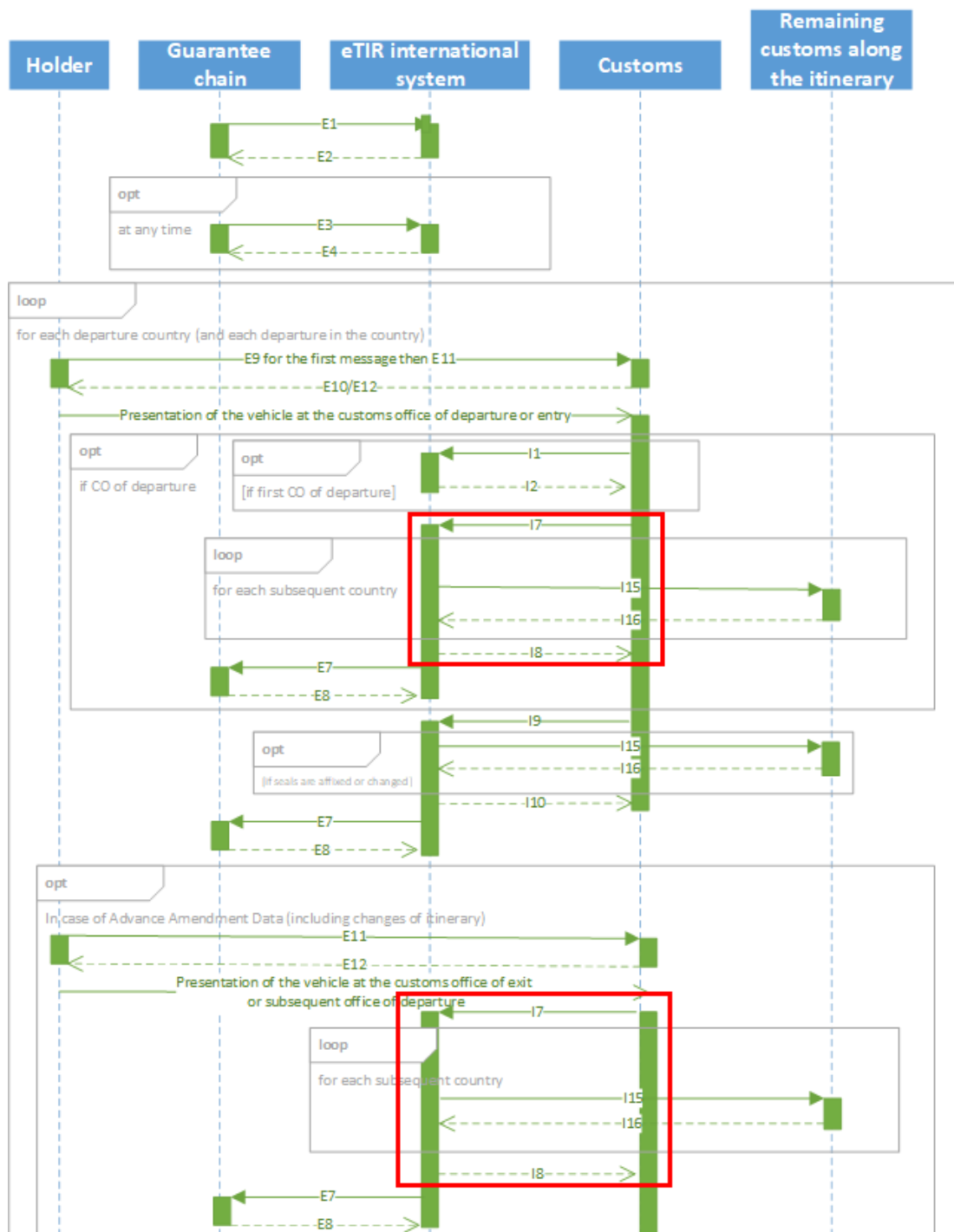
All eTIR messages are identified and belong to a flow described in the eTIR sequence diagrams section of the [eTIR web services introduction document](#). It is key to respect this sequencing, otherwise the eTIR international system will return errors due to invalid sequencing of the messages as described in the [dedicated eTIR error code web page](#).

6. "I7 - Record declaration data" / "I8 - Record declaration data results" messages

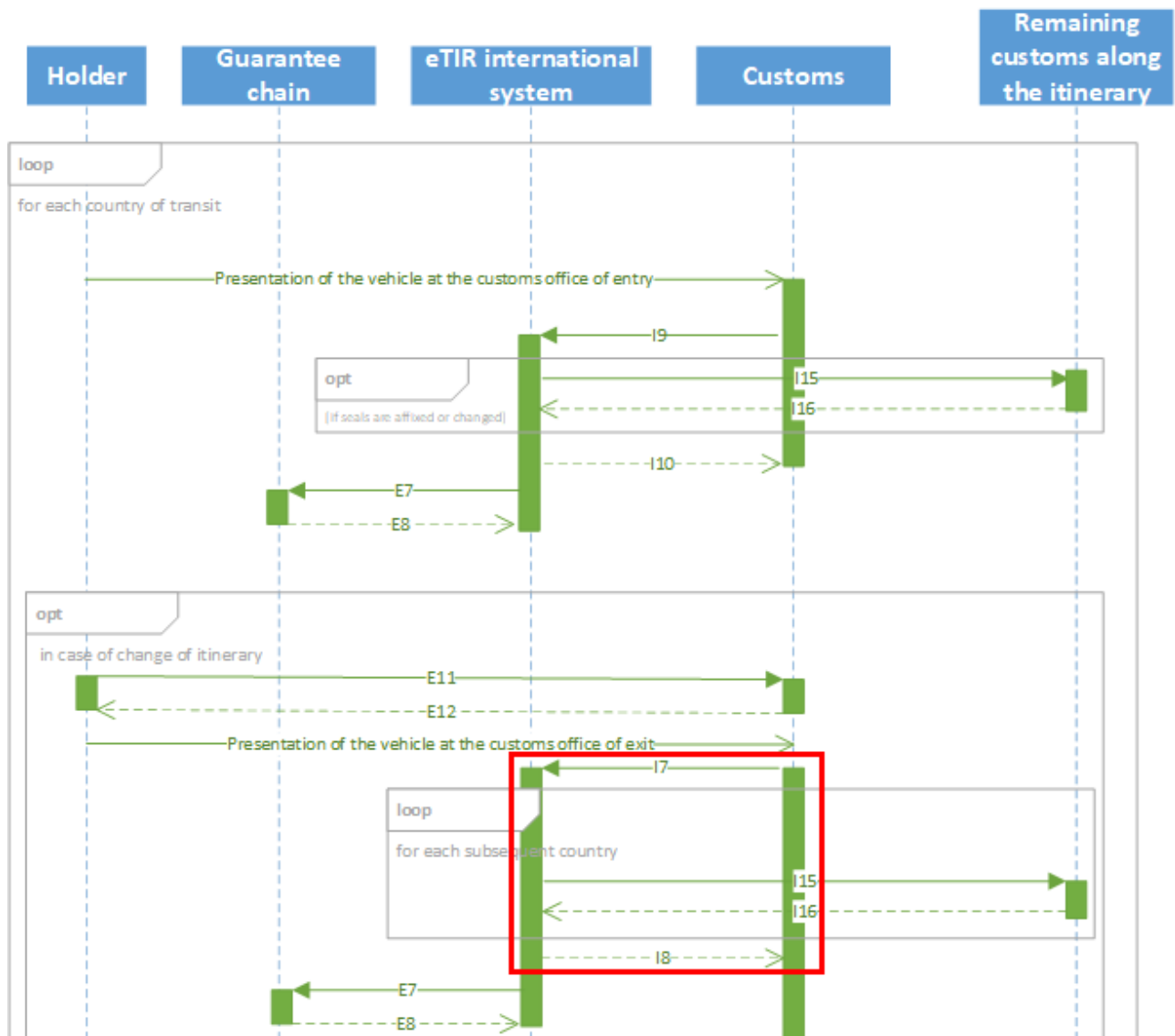
6.1. Sequence diagram

The following sequence diagrams highlight the role and sequence position of the **I7 - Record declaration data** and **I8 - Record declaration data results** messages in the context of TIR departure, TIR transit or TIR destination operations.

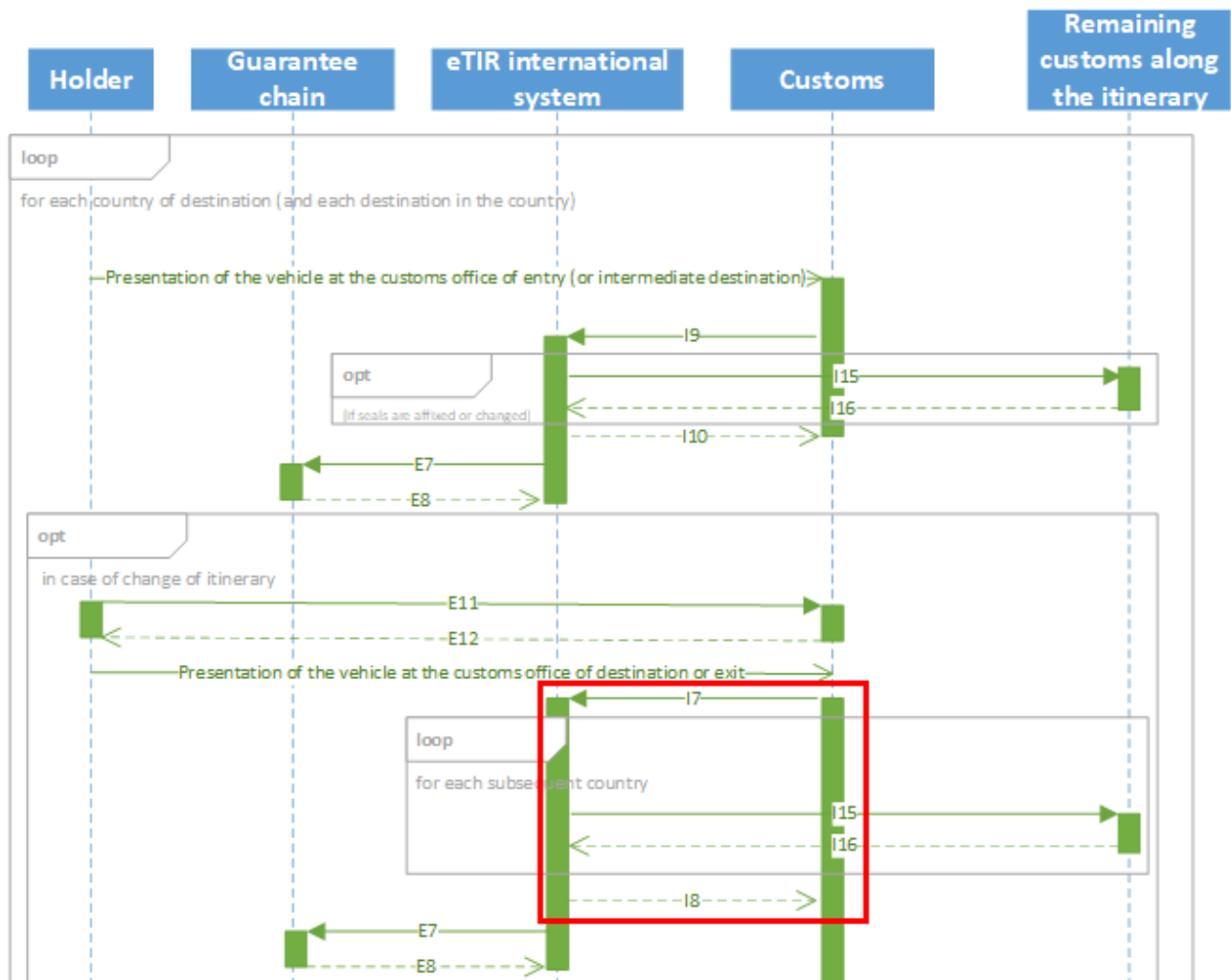
6.1.1. Departure



6.1.2. Transit



6.1.3. Destination



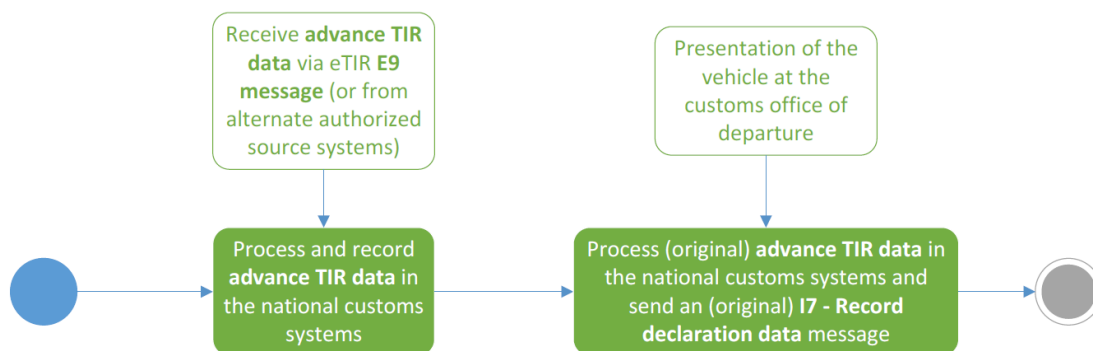
The full eTIR sequence diagrams (Departure, Transit and Destination) are available in the dedicated section of the [eTIR web services introduction document](#).

6.2. Message context

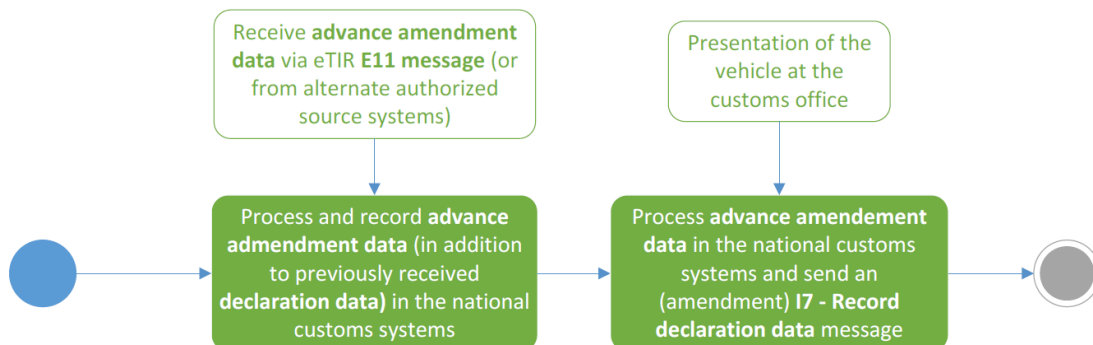
The **I7 - Record declaration data** message is mandatory before starting a TIR transport and should be prepared and sent immediately after the **I1 - Accept guarantee** message has been sent by the same customs office. The **I7 - Record declaration data** contains the data relevant to the declaration accepted by the customs authorities and allows them to record in the eTIR international system all the information related to the declaration for this TIR transport.

It is important to note that the **I7 - Record declaration data** message can be used in two different approaches:

- By the first customs office of departure that will start the TIR transport where the national customs system will send the first declaration data to the eTIR international system. This declaration data is built upon the "advance TIR data" previously sent by the TIR Carnet holder.



- By any other customs office along the itinerary which would have received "advance amendment data" from the TIR Carnet holder. In this case, and upon acceptance of this data by the customs officer, the national customs system will send an amendment of the declaration data to the eTIR international system.



6.2.1. Message prerequisites

Original declaration data

In order for the original declaration data to be properly interpreted by the eTIR international system, the following messages should have been exchanged before this one:

- **E1 - Register guarantee** and **E2 – Registration results** (between the guarantee chain and the eTIR international system): the eGuarantee that was purchased by the TIR Carnet holder must be firstly registered by the guarantee chain to the eTIR international system so it is known and usable in the system.
- **E9 - Advance TIR data** and **E10 - Advance TIR data results** (between the TIR Carnet holder and the national customs system): the TIR Carnet holder will send to the first customs office of departure

the advance TIR data that acts as the pre-declaration for the transport.

- **I1 - Accept guarantee** and **I2 - Acceptance results** (between the national customs system and the eTIR international system): the customs office of departure will have sent to the eTIR international system its acceptance of the eGuarantee for the transport.

Amended declaration data

In order for the amended declaration data to be properly interpreted by the eTIR international system, the following messages should have been exchanged before this one:

- The **original declaration data** should have been received by the eTIR international system.
- **E11 - Advance amendment data** and **E12 - Advance amendment data results** (between the TIR Carnet holder and the national customs system): the TIR Carnet holder will send to a customs office along the itinerary the advance amendment data to request a change to the declaration, to the itinerary, or any other change allowed by the TIR Convention.

6.2.2. Endpoint URL

The URL of the endpoint to use when sending the **I7 - Record declaration data** request message is: <https://etir-uat-01.unece.org/etir/v4.3/customs/recordDeclarationData>

Also note that the WSDL can be accessed at the following URL: <https://etir-uat-01.unece.org/etir/v4.3/customs/recordDeclarationData?wsdl>

6.3. "I7 - Record declaration data" request message

6.3.1. Description

The national customs systems sends the **I7 - Record declaration data** request message to the eTIR international system to record the declaration data related to the beginning of a TIR transport.

It is important to note that the way to indicate if the message is used as an **Original** or an **Amended** declaration data is by setting the appropriate value in the first field of the message: "Message function, coded".

The XSD file related to the **I7 - Record declaration data** message is available at the following URL: https://wiki.unece.org/download/attachments/106299941/WCO_eTIR_I7_1.xsd.

6.3.2. Field list

eTIR field name	Mapping to the XML element (XPATH)	Mandatory	Cardinality	Format	Code lists	Conditions	Rules
MESSAGE							
Message function, coded	Function	R	1..1	n..2	CL16		
Message identifier	ID	R	1..1	an..70			
Type, coded	TypeCode	R	1..1	an..3	CL26		
DECLARATIONDATA	Declaration	R	1..1				
Issuing date	Declaration/IssueDateTime	R	1..1	an..35			
Total gross weight	Declaration/TotalGrossMassMeasure	O	0..1	n..16,6			
ADDITIONALINFORMATION	Declaration/AdditionalInformation	D	0..1			C008	
Heavy and bulky goods indicator	Declaration/AdditionalInformation/StatementCode	R	1..1	an..17	CL14		
Remarks	Declaration/AdditionalInformation/StatementDescription	O	0..1	an..512			
AGENT	Declaration/Agent	O	0..1				
Name	Declaration/Agent/Name	D	0..1	an..70		C001	
Code	Declaration/Agent/ID	D	1..1	an..35		C001	
Role, coded	Declaration/Agent/RoleCode	R	1..1	an..3	CL02		
AMENDMENT	Declaration/Amendment	D	0..*			C008	
Amendment code	Declaration/Amendment/ChangeReasonCode	R	1..1	an..3	CL17		
POINTER	Declaration/Amendment/Pointer	R	1..1				
Sequence number	Declaration/Amendment/Pointer/SequenceNumeric	R	1..1	n..5			
Location	Declaration/Amendment/Pointer/Location	R	1..1	an..512			
SUBCONTRACTOR	Declaration/Carrier	O	0..*				
Name	Declaration/Carrier/Name	D	0..1	an..70		C001	
Code	Declaration/Carrier/ID	D	0..1	an..35		C001	
ADDRESS	Declaration/Carrier/Address	D	0..1			C001	
City name	Declaration/Carrier/Address/CityName	R	1..1	an..35			
Country, coded	Declaration/Carrier/Address/CountryCode	R	1..1	a2	CL04		
Street and number/P.O. Box	Declaration/Carrier/Address/Line	R	1..1	an..256			
Postcode identification	Declaration/Carrier/Address/PostcodeID	R	1..1	an..17			
CONSIGNMENT	Declaration/Consignment	D	0..*			C008	
Sequence number	Declaration/Consignment/SequenceNumeric	R	1..1	n..5			
ATTACHEDDOCUMENTS	Declaration/Consignment/AdditionalDocument	O	0..*				
Number	Declaration/Consignment/AdditionalDocument/ID	R	1..1	an..70			

eTIR field name	Mapping to the XML element (XPATH)	Mandatory	Cardinality	Format	Code lists	Conditions	Rules
Issuing date	Declaration/Consignment/AdditionalDocument/IssueDateTim e	R	1..1	an..35			
Type, coded	Declaration/Consignment/AdditionalDocument/TypeCode	R	1..1	an..3	CL06		
BINARYFILE	Declaration/Consignment/AdditionalDocument/BinaryFile	O	0..1				
Identification	Declaration/Consignment/AdditionalDocument/BinaryFile/I D	R	1..1	an..256			
Title	Declaration/Consignment/AdditionalDocument/BinaryFile/T itle	R	1..1	an..256			
Author name	Declaration/Consignment/AdditionalDocument/BinaryFile/A uthorName	O	0..1	an..70			
Version	Declaration/Consignment/AdditionalDocument/BinaryFile/V ersionID	O	0..1	an..17			
File name	Declaration/Consignment/AdditionalDocument/BinaryFile/F ileNameText	O	0..1	an..256			
URI	Declaration/Consignment/AdditionalDocument/BinaryFile/U RIID	O	0..1	an..2048			
MIME	Declaration/Consignment/AdditionalDocument/BinaryFile/M IMECode	O	0..1	an..70			
Encoding	Declaration/Consignment/AdditionalDocument/BinaryFile/E ncodingCode	O	0..1	an..17			
Character set	Declaration/Consignment/AdditionalDocument/BinaryFile/C haracterSetCode	O	0..1	n..17			
Include binary object	Declaration/Consignment/AdditionalDocument/BinaryFile/I ncludedBinaryObjectBinaryObject	O	0..1	N/A			
Access	Declaration/Consignment/AdditionalDocument/BinaryFile/A ccess	O	0..1	an..256			
Description	Declaration/Consignment/AdditionalDocument/BinaryFile/D escription	O	0..1	an..256			
Size	Declaration/Consignment/AdditionalDocument/BinaryFile/S izeMeasure	O	0..1	n..16,6			
Type	Declaration/Consignment/AdditionalDocument/BinaryFile/T ypeCode	O	0..1	an..6			
Hash code	Declaration/Consignment/AdditionalDocument/BinaryFile/H ashCode	O	0..1	an..256			
Hash code algorithm id	Declaration/Consignment/AdditionalDocument/BinaryFile/H ashCodeAlgorithmIDCode	O	0..1	an..6			
CONSIGNMENTITEM	Declaration/Consignment/ConsignmentItem	R	1..*				
Sequence number	Declaration/Consignment/ConsignmentItem/SequenceNumeric	R	1..1	n..5			

eTIR field name	Mapping to the XML element (XPATH)	Mandatory	Cardinality	Format	Code lists	Conditions	Rules
ADDITIONALINFORMATION	Declaration/Consignment/ConsignmentItem/AdditionalInformation	O	0..*				
Remarks	Declaration/Consignment/ConsignmentItem/AdditionalInformation/Content	R	1..1	an..512			
GOODS	Declaration/Consignment/ConsignmentItem/Commodity	R	1..1				
Description	Declaration/Consignment/ConsignmentItem/Commodity/CargoDescription	D	0..1	an..256		C004	
CLASSIFICATION	Declaration/Consignment/ConsignmentItem/Commodity/Classification	O	0..*				R008
Code	Declaration/Consignment/ConsignmentItem/Commodity/Classification/ID	R	1..1	an..18			
Type, coded	Declaration/Consignment/ConsignmentItem/Commodity/Classification/IdentificationTypeCode	R	1..1	an..3	CL03		
CONSIGNEE	Declaration/Consignment/ConsignmentItem/Consignee	O	0..1				
Name	Declaration/Consignment/ConsignmentItem/Consignee/Name	D	0..1	an..70		C001	
Code	Declaration/Consignment/ConsignmentItem/Consignee/ID	D	0..1	an..35		C001	
ADDRESS	Declaration/Consignment/ConsignmentItem/Consignee/Address	D	0..1			C001	
City name	Declaration/Consignment/ConsignmentItem/Consignee/Address/CityName	R	1..1	an..35			
Country, coded	Declaration/Consignment/ConsignmentItem/Consignee/Address/CountryCode	R	1..1	a2	CL04		
Street and number/P.O. Box	Declaration/Consignment/ConsignmentItem/Consignee/Address/Line	R	1..1	an..256			
Postcode identification	Declaration/Consignment/ConsignmentItem/Consignee/Address/PostcodeID	R	1..1	an..17			
CONSIGNOR	Declaration/Consignment/ConsignmentItem/Consignor	O	0..1				
Name	Declaration/Consignment/ConsignmentItem/Consignor/Name	D	0..1	an..70		C001	
Code	Declaration/Consignment/ConsignmentItem/Consignor/ID	D	0..1	an..35		C001	
ADDRESS	Declaration/Consignment/ConsignmentItem/Consignor/Address	D	0..1			C001	
City name	Declaration/Consignment/ConsignmentItem/Consignor/Address/CityName	R	1..1	an..35			
Country, coded	Declaration/Consignment/ConsignmentItem/Consignor/Address/CountryCode	R	1..1	a2	CL04		
Street and number/P.O. Box	Declaration/Consignment/ConsignmentItem/Consignor/Address/Line	R	1..1	an..256			

eTIR field name	Mapping to the XML element (XPATH)	Mandatory	Cardinality	Format	Code lists	Conditions	Rules
↳ Postcode identification	Declaration/Consignment/ConsignmentItem/Consignor/Address/PostcodeID	R	1..1	an..17			
└─ DELIVERYDESTINATION	Declaration/Consignment/ConsignmentItem/DeliveryDestination	O	0..1				
└─ Name	Declaration/Consignment/ConsignmentItem/DeliveryDestination/Name	R	1..1	an..70			
└─ ADDRESS	Declaration/Consignment/ConsignmentItem/DeliveryDestination/Address	R	1..1				
└─ City name	Declaration/Consignment/ConsignmentItem/DeliveryDestination/Address/CityName	R	1..1	an..35			
└─ Country, coded	Declaration/Consignment/ConsignmentItem/DeliveryDestination/Address/CountryCode	R	1..1	a2	CL04		
└─ Street and number/P.O. Box	Declaration/Consignment/ConsignmentItem/DeliveryDestination/Address/Line	R	1..1	an..256			
↳ Postcode identification	Declaration/Consignment/ConsignmentItem/DeliveryDestination/Address/PostcodeID	R	1..1	an..17			
└─ GOODSMEASURE	Declaration/Consignment/ConsignmentItem/GoodsMeasure	R	1..1				
↳ Gross weight	Declaration/Consignment/ConsignmentItem/GoodsMeasure/GrossMassMeasure	R	1..1	n..16,6			
└─ PACKAGING	Declaration/Consignment/ConsignmentItem/Packaging	R	1..1				
└─ Marks and numbers	Declaration/Consignment/ConsignmentItem/Packaging/MarksNumbersID	O	0..1	an..512			
└─ Number of packages	Declaration/Consignment/ConsignmentItem/Packaging/QuantityQuantity	D	0..1	n..8		C002	
↳ Type, coded	Declaration/Consignment/ConsignmentItem/Packaging/TypeCode	R	1..1	an..2	CL07		
└─ TRANSPORTEQUIPMENT	Declaration/Consignment/ConsignmentItem/TransportEquipment	D	0..1			C003	
↳ Identification	Declaration/Consignment/ConsignmentItem/TransportEquipment/ID	R	1..1	an..17			
↳ UCR	Declaration/Consignment/ConsignmentItem/UCR	O	0..1				
↳ Identifier	Declaration/Consignment/ConsignmentItem/UCR/ID	O	0..1	an..35			
└─ LOADINGLOCATION	Declaration/Consignment/LoadingLocation	O	0..1				
↳ Name	Declaration/Consignment/LoadingLocation/Name	O	0..1	an..256			
└─ NOTIFYPARTY	Declaration/Consignment/NotifyParty	O	0..1				
└─ Name	Declaration/Consignment/NotifyParty/Name	D	0..1	an..70		C001	
└─ Code	Declaration/Consignment/NotifyParty/ID	D	0..1	an..35		C001	

eTIR field name	Mapping to the XML element (XPATH)	Mandatory	Cardinality	Format	Code lists	Conditions	Rules
↳ ADDRESS	Declaration/Consignment/NotifyParty/Address	D	0..1			C001	
City name	Declaration/Consignment/NotifyParty/Address/CityName	R	1..1	an..35			
Country, coded	Declaration/Consignment/NotifyParty/Address/CountryCode	R	1..1	a2	CL04		
Street and number/P.O. Box	Declaration/Consignment/NotifyParty/Address/Line	R	1..1	an..256			
↳ Postcode identification	Declaration/Consignment/NotifyParty/Address/PostcodeID	R	1..1	an..17			
↳ CUSTOMSOFFICEOFDEPARTURE	Declaration/Consignment/TransitDeparture	R	1..1				
↳ Code	Declaration/Consignment/TransitDeparture/ID	R	1..1	an..35			
↳ CUSTOMSOFFICEOFDESTINATION	Declaration/Consignment/TransitDestination	R	1..1				
↳ Code	Declaration/Consignment/TransitDestination/ID	R	1..1	an..35			
↳ TRANSPORTMEANS	Declaration/Consignment/TransitTransportMeans	R	1..*				
Identification	Declaration/Consignment/TransitTransportMeans/ID	R	1..1	an..25			
Type, coded	Declaration/Consignment/TransitTransportMeans/TypeCode	R	1..1	an..4	CL05		
Nationality	Declaration/Consignment/TransitTransportMeans/RegistrationNationalityCode	R	1..1	a2	CL04		
Conveyance reference number	Declaration/Consignment/TransitTransportMeans/JourneyID	O	0..1	an..17			
↳ COUNTRYOFROUTING	Declaration/Consignment/TransitTransportMeans/Itinerary	R	1..*				R001
Sequence number	Declaration/Consignment/TransitTransportMeans/Itinerary/SequenceNumeric	R	1..1	n..5			
↳ Country, coded	Declaration/Consignment/TransitTransportMeans/Itinerary/RoutingCountryCode	R	1..1	a2	CL04		
↳ TRANSPORTEQUIPMENT	Declaration/Consignment/TransportEquipment	D	0..*			C003	
Sequence number	Declaration/Consignment/TransportEquipment/SequenceNumeric	R	1..1	n..5			
Size and type identification	Declaration/Consignment/TransportEquipment/CharacteristicCode	R	1..1	an..4	CL01		
Identification	Declaration/Consignment/TransportEquipment/ID	R	1..1	an..17			
↳ CERTIFICATEOFAPPROVAL	Declaration/Consignment/TransportEquipment/AdditionalDocument	D	0..1			C005	
Number	Declaration/Consignment/TransportEquipment/AdditionalDocument/ID	R	1..1	an..70			
Issuing date	Declaration/Consignment/TransportEquipment/AdditionalDocument/IssueDateTime	R	1..1	an..35			
Type, coded	Declaration/Consignment/TransportEquipment/AdditionalDocument/TypeCode	R	1..1	an..3	CL06		
↳ BINARYFILE	Declaration/Consignment/TransportEquipment/AdditionalDocument/BinaryFile	O	0..1				

eTIR field name	Mapping to the XML element (XPATH)	Mandatory	Cardinality	Format	Code lists	Conditions	Rules
Identification	Declaration/Consignment/TransportEquipment/AdditionalDocument/BinaryFile/ID	R	1..1	an..256			
Title	Declaration/Consignment/TransportEquipment/AdditionalDocument/BinaryFile/Title	R	1..1	an..256			
Author name	Declaration/Consignment/TransportEquipment/AdditionalDocument/BinaryFile/AuthorName	O	0..1	an..70			
Version	Declaration/Consignment/TransportEquipment/AdditionalDocument/BinaryFile/VersionID	O	0..1	an..17			
File name	Declaration/Consignment/TransportEquipment/AdditionalDocument/BinaryFile/FileNameText	O	0..1	an..256			
URI	Declaration/Consignment/TransportEquipment/AdditionalDocument/BinaryFile/URIID	O	0..1	an..2048			
MIME	Declaration/Consignment/TransportEquipment/AdditionalDocument/BinaryFile/MIMECode	O	0..1	an..70			
Encoding	Declaration/Consignment/TransportEquipment/AdditionalDocument/BinaryFile/EncodingCode	O	0..1	an..17			
Character set	Declaration/Consignment/TransportEquipment/AdditionalDocument/BinaryFile/CharacterSetCode	O	0..1	n..17			
Include binary object	Declaration/Consignment/TransportEquipment/AdditionalDocument/BinaryFile/IncludedBinaryObjectBinaryObject	O	0..1	N/A			
Access	Declaration/Consignment/TransportEquipment/AdditionalDocument/BinaryFile/Access	O	0..1	an..256			
Description	Declaration/Consignment/TransportEquipment/AdditionalDocument/BinaryFile/Description	O	0..1	an..256			
Size	Declaration/Consignment/TransportEquipment/AdditionalDocument/BinaryFile/SizeMeasure	O	0..1	n..16,6			
Type	Declaration/Consignment/TransportEquipment/AdditionalDocument/BinaryFile/TypeCode	O	0..1	an..6			
Hash code	Declaration/Consignment/TransportEquipment/AdditionalDocument/BinaryFile/HashCode	O	0..1	an..256			
Hash code algorithm id	Declaration/Consignment/TransportEquipment/AdditionalDocument/BinaryFile/HashCodeAlgorithmIDCode	O	0..1	an..6			
SEAL	Declaration/Consignment/TransportEquipment/Seal	O	0..*				
Sequence number	Declaration/Consignment/TransportEquipment/Seal/SequenceNumeric	R	1..1	n..5			R003, R004
Seal number	Declaration/Consignment/TransportEquipment/Seal/ID	R	1..1	an..35			R005
Seal type code	Declaration/Consignment/TransportEquipment/Seal/TypeCode	O	0..1	an..3	CL08		

eTIR field name	Mapping to the XML element (XPATH)	Mandatory	Cardinality	Format	Code lists	Conditions	Rules
└─ GUARANTEE	Declaration/DeclarationGuarantee	D	1..1			C008	
└─ Reference	Declaration/DeclarationGuarantee/ReferenceID	R	1..1	an..35			
└─ HOLDER	Declaration/Principal	D	0..1			C008	
└─ Name	Declaration/Principal/Name	O	0..1	an..70			
└─ Code	Declaration/Principal/ID	R	1..1	an..35			
└─ ADDRESS	Declaration/Principal/Address	D	0..1			C001	
└─ City name	Declaration/Principal/Address/CityName	R	1..1	an..35			
└─ Country, coded	Declaration/Principal/Address/CountryCode	R	1..1	a2	CL04		
└─ Street and number/P.O. Box	Declaration/Principal/Address/Line	R	1..1	an..256			
└─ Postcode identification	Declaration/Principal/Address/PostcodeID	R	1..1	an..17			

6.3.3. Field descriptions

eTIR field name	Mapping to the XML element (XPATH)	Description	Usage
MESSAGE			
└─ Message function, coded	Function	Code describing the function of the message	The value should be set to "9" if this message is the original (the first one to be submitted for this TIR transport) or "4" if this message reflects an amendment to the declaration
└─ Message identifier	ID	Unique identifier of the message	The value should be a Globally Unique Identifier (GUID) as detailed in the dedicated section of the introduction document
└─ Type, coded	TypeCode	Code of the message type	The value should be set to "I7"
└─ DECLARATIONDATA	Declaration	Class representing the declaration data as accepted by customs	
└─ Issuing date	Declaration/IssueDateTime	Date at which the message E9 (or E11) received by the customs, was issued	The value should be the one from the "Issuing date" attribute of the message E9 received by the customs
└─ Total gross weight	Declaration/TotalGrossMassMeasure	Total gross weight of goods (including packaging) of the declaration	The value should be the total gross weight as a decimal number. The unit should be defined in the Measure Unit. The code attribute should match one of the values listed in the list Measurement unit code (UNECE Recommendation 20)
└─ ADDITIONALINFORMATION	Declaration/AdditionalInformation	Class containing potential additional information at the declaration level	

eTIR field name	Mapping to the XML element (XPATH)	Description	Usage
Heavy and bulky goods indicator	Declaration/AdditionalInformation/StatementCode	Code describing whether the goods are considered (according to article 29) as "heavy or bulky", as defined article 1 (p) of the TIR Convention.	The value should be "1" if the goods are considered by the customs as "heavy or bulky" or "0" otherwise
Remarks	Declaration/AdditionalInformation/StatementDescription	Text used to allow for remarks to the declaration from the TIR Carnet holder	The value should be containing the remarks to the declaration from the transporter, or remains blank if there are none
AGENT	Declaration/Agent	Class representing the potential agent which would declare the goods on behalf of the TIR Carnet holder	
Name	Declaration/Agent/Name	Name of the agent	The value should be the official company name, or the first and last name of the person in case of physical person, to allow for quick identification
Code	Declaration/Agent/ID	Unique identifier of the agent	The value should be the unique identifier of the agent
Role, coded	Declaration/Agent/RoleCode	Code of the role of the agent	The value should be the code matching the role of the agent from the list Party role code (UN/EDIFACT 3035)
AMENDMENT	Declaration/Amendment	Class representing the list of potential amendments to the declaration	
Amendment code	Declaration/Amendment/ChangeReasonCode	Code describing the type of amendment	The value should be the code matching the type of amendment from the list Amendment code (eTIR) (https://www.unece.org/fileadmin/DAM/trans/bcf/eTIR/documents/CodeLists0_4.pdf#page=121)
POINTER	Declaration/Amendment/Pointer	Class representing the pointer to the part of the declaration to be amended	
Sequence number	Declaration/Amendment/Pointer/SequenceNumeric	Index of the pointer in the list	The value should be the 1-based index of the pointer in the list
Location	Declaration/Amendment/Pointer/Location	Location of the class or attribute to be amended	The value should be the location of the class or attribute following the XPath syntax
SUBCONTRACTOR	Declaration/Carrier	Class representing the potential agent which undertakes or arranges transport of goods between named points	
Name	Declaration/Carrier/Name	Name of the subcontractor	The value should be the official company name, or the first and last name of the person in case of physical person, to allow for quick identification
Code	Declaration/Carrier/ID	Unique identifier of the subcontractor	The value should be the unique identifier of the subcontractor

eTIR field name	Mapping to the XML element (XPATH)	Description	Usage
↳ ADDRESS	Declaration/Carrier/Address	Class representing the physical address of the subcontractor	
↳ City name	Declaration/Carrier/Address/CityName	City name of the physical address of the subcontractor	The value should be the city name of the physical address of the subcontractor
↳ Country, coded	Declaration/Carrier/Address/CountryCode	Code of the country of the physical address of the subcontractor	The value should be the code of the country of the physical address of the subcontractor from the list Country name code (ISO 3166-1-alpha-2)
↳ Street and number/P.O. Box	Declaration/Carrier/Address/Line	Street name of the physical address of the subcontractor	The value should be the street name and number (or equivalent) of the physical address of the subcontractor
↳ Postcode identification	Declaration/Carrier/Address/PostcodeID	Postal/Zip code of the physical address of the subcontractor	The value should be the postal/ZIP code of the physical address of the subcontractor
↳ CONSIGNMENT	Declaration/Consignment	Class representing the list of details on the transport of goods between a loading point and an unloading point	
↳ Sequence number	Declaration/Consignment/SequenceNumeric	Index of the consignment in the list	The value should be the 1-based index of the pointer in the list
↳ ATTACHEDDOCUMENTS	Declaration/Consignment/AdditionalDocument	Class representing the list of potential additional documents supplied as part of the declaration and related to the consignment	
↳ Number	Declaration/Consignment/AdditionalDocument/ID	Identifier of the document	The value should be an ID identifying the document and it should be unique among all other attached documents of the declaration
↳ Issuing date	Declaration/Consignment/AdditionalDocument/IssueDateTime	Issuing date of the document	The value should be a date to be provided following the EDIFACT 208 format CCYYMMDDHHMMSSZHMM (http://www.unece.org/trade/untid/d13b/tred/tred2379.htm). For Example: 20200820145600+0100 represents 20 August 2020 at 14:56 UTC+01:00.
↳ Type, coded	Declaration/Consignment/AdditionalDocument/TypeCode	Code of the type of the document	The value should be the code of the type of the document from the list Document name code (UN/EDIFACT 1001)
↳ BINARYFILE	Declaration/Consignment/AdditionalDocument/BinaryFile	Class representing the content of the document	
↳ Identification	Declaration/Consignment/AdditionalDocument/BinaryFile/ID	Unique identifier of the file representing the document	The value should be an ID identifying the file and it should be unique among all other binary files of the declaration
↳ Title	Declaration/Consignment/AdditionalDocument/BinaryFile/Title	Title of the document	The value should be the title of the document

eTIR field name	Mapping to the XML element (XPATH)	Description	Usage
⊢ Author name	Declaration/Consignment/AdditionalDocument/BinaryFile/AuthorName	Name of the author of the document	The value should be the first and last name of the author of the document
⊢ Version	Declaration/Consignment/AdditionalDocument/BinaryFile/VersionID	Version number of the document	The value should be the version of the document
⊢ File name	Declaration/Consignment/AdditionalDocument/BinaryFile/FileNameText	File name of the document	The value should be the name of the file representing the document, including the extension
⊢ URI	Declaration/Consignment/AdditionalDocument/BinaryFile/URIID	URI of the document	The value should be the Unique Resource Identifier (URI) allowing to access the document instead of relying on a binary object representation
⊢ MIME	Declaration/Consignment/AdditionalDocument/BinaryFile/MIMECode	Code of the MIME type of the file	The value should be one of the MIME types as listed by the IANA organization on the page: http://www.iana.org/assignments/media-types/media-types.xhtml
⊢ Encoding	Declaration/Consignment/AdditionalDocument/BinaryFile/EncodingCode	Code of the encoding algorithm of the file	The value should be the type of encoding algorithm used to encode the file
⊢ Character set	Declaration/Consignment/AdditionalDocument/BinaryFile/CharacterSetCode	Code of the character set of the file	The value should be the character set used in case the file is a text file
⊢ Include binary object	Declaration/Consignment/AdditionalDocument/BinaryFile/IncludedBinaryObjectBinaryObject	Binary representation of the file	The value should be the content of the file represented using the characteristics mentioned in the other attributes (EncodingCode and CharacterSetCode)
⊢ Access	Declaration/Consignment/AdditionalDocument/BinaryFile/Access	Access information of the file	The value should be the information needed to access the file, such as security and download parameters. This is only useful when the file is accessible using the URIID parameter
⊢ Description	Declaration/Consignment/AdditionalDocument/BinaryFile/Description	Description of the document	The value should be the description of the document and explain what it contains
⊢ Size	Declaration/Consignment/AdditionalDocument/BinaryFile/SizeMeasure	Size of the file	The value should be the size of the file The unit should be defined in the Measure Unit. The code attribute should match one of the values listed in the Measurement unit code (UNECE Recommendation 20)
⊢ Type	Declaration/Consignment/AdditionalDocument/BinaryFile/TypeCode	Code of the type of file	
⊢ Hash code	Declaration/Consignment/AdditionalDocument/BinaryFile/HashCode	Hash value of the file	The value should be the hash code string that resulted from hashing the attached file to be used for file reception validation
⊣ Hash code algorithm id	Declaration/Consignment/AdditionalDocument/BinaryFile/HashCodeAlgorithmIDCode	Code of the hash algorithm	The value should be the short name of the algorithm used to compute the hash value of the file

eTIR field name	Mapping to the XML element (XPATH)	Description	Usage
CONSIGNMENTITEM	Declaration/Consignment/ConsignmentItem	Class representing the list of details on the items in the consignment	
Sequence number	Declaration/Consignment/ConsignmentItem/SequenceNumeric	Index of the consignment item in the list	The value should be the 1-based index of the consignment in the list, allowing for quick physical identification upon inspection
ADDITIONALINFORMATION	Declaration/Consignment/ConsignmentItem/AdditionalInformation	Class representing the list of potential additional information at the consignment item level	
Remarks	Declaration/Consignment/ConsignmentItem/AdditionalInformation/Content	Remarks on the consignment item	The value should be a text allowing for additional remarks on the consignment item
GOODS	Declaration/Consignment/ConsignmentItem/Commodity	Class representing the details on the goods	
Description	Declaration/Consignment/ConsignmentItem/Commodity/CargoDescription	Description of the goods	The value should be a text describing the goods
CLASSIFICATION	Declaration/Consignment/ConsignmentItem/Commodity/Classification	Class representing the list of classification details of the goods	
Code	Declaration/Consignment/ConsignmentItem/Commodity/Classification/ID	Identifier of the classification of the goods	The value should be the identifier of the non commercial classification of the goods
Type, coded	Declaration/Consignment/ConsignmentItem/Commodity/Classification/IdentificationTypeCode	Code of the classification	The value should be the code of the classification from the list Item type identification code (UN/EDIFACT 7143)
CONSIGNEE	Declaration/Consignment/ConsignmentItem/Consignee	Class representing the potential consignee of the goods	
Name	Declaration/Consignment/ConsignmentItem/Consignee/Name	Name of the consignee	The value should be the official company name, or the first and last name of the person in case of physical person, to allow for quick identification
Code	Declaration/Consignment/ConsignmentItem/Consignee/ID	Unique identifier of the consignee	The value should be the unique identifier of the consignee
ADDRESS	Declaration/Consignment/ConsignmentItem/Consignee/Address	Class representing the physical address of the consignee	
City name	Declaration/Consignment/ConsignmentItem/Consignee/Address/CityName	City name of the physical address of the consignee	The value should be the city name of the physical address of the consignee
Country, coded	Declaration/Consignment/ConsignmentItem/Consignee/Address/CountryCode	Code of the country of the physical address of the consignee	The value should be the code of the country of the physical address of the consignee from the list Country name code (ISO 3166-1-alpha-2) (https://www.unece.org/fileadmin/DAM/trans/bcf/eTIR/documents/CodeLists0_4.pdf#page=38)
Street and number/P.O. Box	Declaration/Consignment/ConsignmentItem/Consignee/Address/Line	Street name of the physical address of the consignee	The value should be the street name and number (or equivalent) of the physical address of the consignee

eTIR field name	Mapping to the XML element (XPATH)	Description	Usage
↳ Postcode identification	Declaration/Consignment/ConsignmentItem/Consignee/Address/PostcodeID	Postal/Zip code of the physical address of the consignee	The value should be the postal/ZIP code of the physical address of the consignee
↳ CONSIGNOR	Declaration/Consignment/ConsignmentItem/Consignor	Class representing the potential consignor of the goods	
↳ Name	Declaration/Consignment/ConsignmentItem/Consignor/Name	Name of the consignor	The value should be the official company name, or the first and last name of the person in case of physical person, to allow for quick identification
↳ Code	Declaration/Consignment/ConsignmentItem/Consignor/ID	Unique identifier of the consignor	The value should be the unique identifier of the consignor
↳ ADDRESS	Declaration/Consignment/ConsignmentItem/Consignor/Address	Class representing the physical address of the consignor	
↳ City name	Declaration/Consignment/ConsignmentItem/Consignor/Address/CityName	City name of the physical address of the consignor	The value should be the city name of the physical address of the consignor
↳ Country, coded	Declaration/Consignment/ConsignmentItem/Consignor/Address/CountryCode	Code of the country of the physical address of the consignor	The value should be the code of the country of the physical address of the consignor from the list (Country name code (ISO 3166-1-alpha-2))
↳ Street and number/P.O. Box	Declaration/Consignment/ConsignmentItem/Consignor/Address/Line	Street name of the physical address of the consignor	The value should be the street name and number (or equivalent) of the physical address of the consignor
↳ Postcode identification	Declaration/Consignment/ConsignmentItem/Consignor/Address/PostcodeID	Postal/Zip code of the physical address of the consignor	The value should be the postal/ZIP code of the physical address of the consignor
↳ DELIVERYDESTINATION	Declaration/Consignment/ConsignmentItem/DeliveryDestination	Class representing the potential party to which the goods should be delivered	
↳ Name	Declaration/Consignment/ConsignmentItem/DeliveryDestination/Name	Name of the delivery destination	The value should be the official company name, or the first and last name of the person in case of physical person, to allow for quick identification.
↳ ADDRESS	Declaration/Consignment/ConsignmentItem/DeliveryDestination/Address	Class representing the physical address of the delivery destination	
↳ City name	Declaration/Consignment/ConsignmentItem/DeliveryDestination/Address/CityName	City name of the physical address of the delivery destination	The value should be the city name of the physical address of the delivery destination
↳ Country, coded	Declaration/Consignment/ConsignmentItem/DeliveryDestination/Address/CountryCode	Code of the country of the physical address of the delivery destination	The value should be the code of the country of the physical address of the delivery destination from the list (Country name code (ISO 3166-1-alpha-2))
↳ Street and number/P.O. Box	Declaration/Consignment/ConsignmentItem/DeliveryDestination/Address/Line	Street name of the physical address of the delivery destination	The value should be the street name and number (or equivalent) of the physical address of the delivery destination
↳ Postcode identification	Declaration/Consignment/ConsignmentItem/DeliveryDestination/Address/PostcodeID	Postal/Zip code of the physical address of the delivery destination	The value should be the postal/ZIP code of the physical address of the delivery destination

eTIR field name	Mapping to the XML element (XPATH)	Description	Usage
⊢ GOODSMEASURE	Declaration/Consignment/ConsignmentItem/GoodsMeasure	Class representing the details on the measures of the goods	
⊣ Gross weight	Declaration/Consignment/ConsignmentItem/GoodsMeasure/GrossMassMeasure	Total gross weight of the goods	The value should be the weight (mass) of goods including packaging but excluding the transport equipment. The unit should be defined in the Measure Unit. The code attribute should match one of the values listed in the Measurement unit code (UNECE Recommendation 20)
⊢ PACKAGING	Declaration/Consignment/ConsignmentItem/Packaging	Class representing the details on the packaging of the goods	
⊢ Marks and numbers	Declaration/Consignment/ConsignmentItem/Packaging/MarksNumbersID	Packaging marks and numbers	The value should be a text describing the marks and numbers on a transport unit or package.
⊢ Number of packages	Declaration/Consignment/ConsignmentItem/Packaging/QuantityQuantity	Number of packages	The value should be the number of individual items packaged in such a way that they cannot be divided without first undoing the packing
⊣ Type, coded	Declaration/Consignment/ConsignmentItem/Packaging/TypeCode	Code of the packaging type	The value should be the code of the type of packaging from the list Package type description code (UNECE Recommendation 21 Annex VI)
⊢ TRANSPORTEQUIPMENT	Declaration/Consignment/ConsignmentItem/TransportEquipment	Class representing the transport equipment used for the consignment item	
⊣ Identification	Declaration/Consignment/ConsignmentItem/TransportEquipment/ID	Identifier of the transport equipment	The value should be marks (letters and/or numbers) which identify the transport equipment
⊣ UCR	Declaration/Consignment/ConsignmentItem/UCR	Class representing the Unique Trader Reference	
⊣ Identifier	Declaration/Consignment/ConsignmentItem/UCR/ID	Unique identifier of the goods	The value should be the unique identifier assigned to goods being subject to cross border transactions
⊢ LOADINGLOCATION	Declaration/Consignment/LoadingLocation	Class representing the place of loading of the goods	
⊣ Name	Declaration/Consignment/LoadingLocation/Name	Name of the loading location	The value should be the name of a seaport, airport, freight terminal, rail station or other place at which goods are loaded onto the means of transport being used for their carriage
⊢ NOTIFYPARTY	Declaration/Consignment/NotifyParty	Class representing a potential party to be notified	

eTIR field name	Mapping to the XML element (XPATH)	Description	Usage
Name	Declaration/Consignment/NotifyParty/Name	Name of the party to be notified	The value should be the name (first and last name or company) of the party to be notified
Code	Declaration/Consignment/NotifyParty/ID	Unique identifier of the party to be notified	The value should be the unique identifier of the party to be notified
ADDRESS	Declaration/Consignment/NotifyParty/Address	Class representing the physical address of the party to be notified	
City name	Declaration/Consignment/NotifyParty/Address/CityName	City name of the physical address of the party to be notified	The value should be the city name of the physical address of the party to be notified
Country, coded	Declaration/Consignment/NotifyParty/Address/CountryCode	Code of the country of the physical address of the party to be notified	The value should be the code of the country of the physical address of the party to be notified from the list Country name code (ISO 3166-1-alpha-2)
Street and number/P.O. Box	Declaration/Consignment/NotifyParty/Address/Line	Street name of the physical address of the party to be notified	The value should be the street name and number (or equivalent) of the physical address of the party to be notified
Postcode identification	Declaration/Consignment/NotifyParty/Address/PostcodeID	Postal/Zip code of the physical address of the party to be notified	The value should be the postal/ZIP code of the physical address of the party to be notified
CUSTOMSOFFICEOFDEPARTURE	Declaration/Consignment/TransitDeparture	Class representing the customs office where the goods are loaded	
Code	Declaration/Consignment/TransitDeparture/ID	Unique identifier of the customs office of departure	The value should be the unique identifier used of the customs of departure, where the goods are loaded. This identifier is the one registered in the International TIR Data Bank (ITDB) for the customs office
CUSTOMSOFFICEOFDESTINATION	Declaration/Consignment/TransitDestination	Class representing the customs office where the goods are unloaded	
Code	Declaration/Consignment/TransitDestination/ID	Unique identifier of the customs office of destination	The value should be the unique identifier used of the customs of destination, where the goods are unloaded. This identifier is the one registered in the International TIR Data Bank (ITDB) for the customs office
TRANSPORTMEANS	Declaration/Consignment/TransitTransportMeans	Class representing the list of the means of transport for the consignment	
Identification	Declaration/Consignment/TransitTransportMeans/ID	Unique identifier of the transport means	The value should be the unique identifier of the means of transport used for the transit
Type, coded	Declaration/Consignment/TransitTransportMeans/TypeCode	Code of the means of transport	The value should be the code of the means of transport from the list Transport means description code (UNECE Recommendation 28)

eTIR field name	Mapping to the XML element (XPATH)	Description	Usage
Nationality	Declaration/Consignment/TransitTransportMeans/RegistrationNationalityCode	Nationality of the means of transport	The value should be the code of the country for the nationality of the means of transport from the list Country name code (ISO 3166-1-alpha-2)
Conveyance reference number	Declaration/Consignment/TransitTransportMeans/JourneyID	Unique identifier of the journey	The value should be the unique identifier of the journey of a means of transport (for example voyage number, flight number or trip number)
COUNTRYOFROUTING	Declaration/Consignment/TransitTransportMeans/Itinerary	Class representing the list of countries of the itinerary of the consignment	
Sequence number	Declaration/Consignment/TransitTransportMeans/Itinerary/SequenceNumeric	Index of the country in the list	The value should be the 1-based index of the country in the list representing the itinerary of the consignment
Country, coded	Declaration/Consignment/TransitTransportMeans/Itinerary/RoutingCountryCode	Code of the country	The value should be the code of the country from the list Country name code (ISO 3166-1-alpha-2)
TRANSPORTEQUIPMENT	Declaration/Consignment/TransportEquipment	Class representing the list of the transport equipment used for the consignment	
Sequence number	Declaration/Consignment/TransportEquipment/SequenceNumeric	Index of the transport equipment in the list	The value should be the 1-based index of the transport equipment in the list
Size and type identification	Declaration/Consignment/TransportEquipment/CharacteristicCode	Code of the transport equipment	The value should be the code of the transport equipment (specifying its characteristics) from the list Equipment size and type description code (UN/EDIFACT 8155)
Identification	Declaration/Consignment/TransportEquipment/ID	Identifier of the transport equipment	The value should be marks (letters and/or numbers) which identify the transport equipment
CERTIFICATEOFAPPROVAL	Declaration/Consignment/TransportEquipment/AdditionalDocument	Class representing the details of the certificate of approval of the transport equipment	
Number	Declaration/Consignment/TransportEquipment/AdditionalDocument/ID	Unique identifier of the certificate of approval	The value should be the unique identifier of the certificate of approval
Issuing date	Declaration/Consignment/TransportEquipment/AdditionalDocument/IssueDateTime	Issuing date of the document	The value should be a date to be provided following the EDIFACT 102 format CCYYMMDD (https://www.unece.org/trade/untidd/d00a/tred/tred2379.htm). For Example: 20200820 represents 20 August 2020.
Type, coded	Declaration/Consignment/TransportEquipment/AdditionalDocument/TypeCode	Code of the type of file	The value should be the code of the type of the document from the list Document name code (UN/EDIFACT 1001)
BINARYFILE	Declaration/Consignment/TransportEquipment/AdditionalDocument/BinaryFile	Class representing the content of the document	

eTIR field name	Mapping to the XML element (XPATH)	Description	Usage
Identification	Declaration/Consignment/TransportEquipment/AdditionalDocument/BinaryFile/ID	Unique identifier of the file representing the document	The value should be an ID identifying the file and it should be unique among all other binary files of the declaration
Title	Declaration/Consignment/TransportEquipment/AdditionalDocument/BinaryFile/Title	Title of the document	The value should be the title of the document
Author name	Declaration/Consignment/TransportEquipment/AdditionalDocument/BinaryFile/AuthorName	Name of the author of the document	The value should be the first and last name of the author of the document
Version	Declaration/Consignment/TransportEquipment/AdditionalDocument/BinaryFile/VersionID	Version number of the document	The value should be the version of the document
File name	Declaration/Consignment/TransportEquipment/AdditionalDocument/BinaryFile/FileNameText	File name of the document	The value should be the name of the file representing the document, including the extension
URI	Declaration/Consignment/TransportEquipment/AdditionalDocument/BinaryFile/URIID	URI of the document	The value should be the Unique Resource Identifier (URI) allowing to access the document instead of relying on a binary object representation
MIME	Declaration/Consignment/TransportEquipment/AdditionalDocument/BinaryFile/MIMECode	Code of the MIME type of the file	The value should be one of the MIME types as listed by the IANA organization on the page: http://www.iana.org/assignments/media-types/media-types.xhtml
Encoding	Declaration/Consignment/TransportEquipment/AdditionalDocument/BinaryFile/EncodingCode	Code of the encoding algorithm of the file	The value should be the type of encoding algorithm used to encode the file
Character set	Declaration/Consignment/TransportEquipment/AdditionalDocument/BinaryFile/CharacterSetCode	Code of the character set of the file	The value should be the character set used in case the file is a text file
Include binary object	Declaration/Consignment/TransportEquipment/AdditionalDocument/BinaryFile/IncludedBinaryObjectBinaryObject	Binary representation of the file	The value should be the content of the file represented using the characteristics mentioned in the other attributes (EncodingCode and CharacterSetCode)
Access	Declaration/Consignment/TransportEquipment/AdditionalDocument/BinaryFile/Access	Access information of the file	The value should be the information needed to access the file, such as security and download parameters. This is only useful when the file is accessible using the URIID parameter
Description	Declaration/Consignment/TransportEquipment/AdditionalDocument/BinaryFile/Description	Description of the document	The value should be the description of the document and explain what it contains
Size	Declaration/Consignment/TransportEquipment/AdditionalDocument/BinaryFile/SizeMeasure	Size of the file	The value should be the size of the file The unit should be defined in the Measure Unit. Code attribute and should match one of the values listed in the Measurement unit code (UNECE Recommendation 20)
Type	Declaration/Consignment/TransportEquipment/AdditionalDocument/BinaryFile/TypeCode	Code of the type of file	

eTIR field name	Mapping to the XML element (XPATH)	Description	Usage
Hash code	Declaration/Consignment/TransportEquipment/AdditionalDocument/BinaryFile/HashCode	Hash value of the file	The value should be the hash code string that resulted from hashing the attached file to be used for file reception validation
Hash code algorithm id	Declaration/Consignment/TransportEquipment/AdditionalDocument/BinaryFile/HashCodeAlgorithmIDCode	Code of the hash algorithm	The value should be the short name of the algorithm used to compute the hash value of the file
SEAL	Declaration/Consignment/TransportEquipment/Seal	Class representing the list of seals affixed to the transport equipment	
Sequence number	Declaration/Consignment/TransportEquipment/Seal/SequenceNumeric	Index of the seal in the list	The value should be the 1-based index of the seal in the list
Seal number	Declaration/Consignment/TransportEquipment/Seal/ID	Unique identifier of the seal	The value should be the unique identifier of the seal affixed to the transport equipment
Seal type code	Declaration/Consignment/TransportEquipment/Seal/TypeCode	Code of the type of seal	The value should be the code of the type of seal from the list Seal type code (eTIR)
GUARANTEE	Declaration/DeclarationGuarantee	Class representing the guarantee of this TIR transport	
Reference	Declaration/DeclarationGuarantee/ReferenceID	Unique identifier of the guarantee	The value should be the unique identifier of the guarantee for this TIR transport
HOLDER	Declaration/Principal	Class representing the TIR Carnet holder (transporter) of this transport	
Name	Declaration/Principal/Name	Name of the TIR Carnet holder	The value should be the official company name, or the first and last name of the person in case of physical person as recorded in the International TIR Data Bank (ITDB), to allow for quick identification
Code	Declaration/Principal/ID	Unique identifier of the TIR Carnet holder	The value should be the unique identifier of the TIR Carnet holder as recorded in the International TIR Data Bank (ITDB)
ADDRESS	Declaration/Principal/Address	Class representing the physical address of the TIR Carnet holder	
City name	Declaration/Principal/Address/CityName	City name of the physical address of the TIR Carnet holder	The value should be the city name of the physical address of the TIR Carnet holder
Country, coded	Declaration/Principal/Address/CountryCode	Code of the country of the physical address of the TIR Carnet holder	The value should be the code of the country of the physical address of the TIR Carnet holder from the list Country name code (ISO 3166-1-alpha-2)
Street and number/P.O. Box	Declaration/Principal/Address/Line	Street name of the physical address of the TIR Carnet holder	The value should be the street name and number (or equivalent) of the physical address of the TIR Carnet holder
Postcode identification	Declaration/Principal/Address/PostcodeID	Postal/Zip code of the physical address of the TIR Carnet holder	The value should be the postal/ZIP code of the physical address of the TIR Carnet holder



When reading the values of the second columns for both tables, note that the "InterGov/" XML base element has been removed to improve the readability, as it is repeated on every line.

6.3.4. Referred code lists

The following code lists are referred to in the field lists and should be considered when sending the message:

- [CL01](#) - Equipment size and type description code (UN/EDIFACT 8155)
- [CL02](#) - Party role code (UN/EDIFACT 3035)
- [CL03](#) - Item type identification code (UN/EDIFACT 7143)
- [CL04](#) - Country name code (ISO 3166-1-alpha-2)
- [CL05](#) - Transport means description code (UNECE Recommendation 28)
- [CL06](#) - Document name code (UN/EDIFACT 1001)
- [CL07](#) - Package type description code (UNECE Recommendation 21 Annex VI)
- [CL08](#) - Seal type code (eTIR)
- [CL14](#) - Indicator (eTIR)
- [CL16](#) - Message function code (UN/EDIFACT 1225)
- [CL17](#) - Amendment code (eTIR)
- [CL26](#) - Message types (eTIR)



All code lists are described in the [eTIR code lists document](#).

6.3.5. Conditions and Rules

The following conditions of the [eTIR conditions list](#) are referred to in the field lists and should be considered in the message:

- **C001:** IF EXIST(PARTY.code)
THEN NOT EMPTY(PARTY.code)
ELSE NOT EMPTY(PARTY.name , ADDRESS)
- **C002:** IF (PACKAGING.Type, coded) =
"VQ", "VG", "VL", "VY", "VR" OR "VO"
THEN EMPTY(PACKAGING.Number of packages)
ELSE (PACKAGING.Number of packages) > 0
- **C003:** IF(ADVANCE TIR DATA.ADDITIONALINFORMATION.Heavy and bulky goods
indicator) = 0
THEN NOT EMPTY(TRANSPORTEQUIPMENT)
ELSE EMPTY(TRANSPORTEQUIPMENT)
- **C004:** IF EMPTY(GOODS.CLASSIFICATION) OR (GOODS.CLASSIFICATION.Type) <> 'HS'
THEN NOT EMPTY(GOODS.Description)
- **C005:** IF(ADVANCE TIR DATA.ADDITIONALINFORMATION.Heavy and bulky goods
indicator) = 0
THEN NOT EMPTY(TRANSPORTEQUIPMENT.CERTIFICATEOFAPPROVAL)
ELSE EMPTY(TRANSPORTEQUIPMENT.CERTIFICATEOFAPPROVAL)
- **C008:** IF(MESSAGE.Message function, coded) = '1'
THEN EMPTY(ADDITIONALINFORMATION, AGENT,AMENDMENT, SUBCONTRACTOR,
CONSIGMENT,GUARANTEE,HOLDER) AND NOT EMPTY(MESSAGE.FunctionalReference)
ELSE IF(MESSAGE.Message function, coded) = '4'
THEN NOT EMPTY(MESSAGE.FunctionalReference, AMENDMENT,
ADDITIONALINFORMATION,


```
CONSIGMENT, GUARANTEE, HOLDER )
ELSE IF( MESSAGE.Message function, coded) = '9'
THEN EMPTY( MESSAGE.FunctionalReference, AMENDMENT ) AND NOT EMPTY
(ADDITIONALINFORMATION, CONSIGMENT, GUARANTEE, HOLDER )
```

The following rules of the [eTIR rules list](#) are referred to in the field lists and should be considered in the message:

- **R001:** *Each country of transit shall have an unique sequence number. They should be numbered from 1 to the number of countries involved in the transit and represent the order in which countries are traveled from departure to destination. In case of multiple means of transport, this will also allow to determine in which order the means of transport are used.*
- **R003:** *Re-use a sequence number to indicate that a seal has been replaced.*
- **R004:** *Use new sequence number only to mention additional seals.*
- **R005:** *Indicate that a seal has been removed and not replaced with an "X" in the "seals number" field of the transport equipment sequence corresponding to the removed seal.*
- **R008:** *First occurrence of GOODS.CLASSIFICATION must be of type "HS"*

6.3.6. How the national customs system should prepare and send declaration data

Case of the original declaration

When starting a TIR transport from the initial customs office of departure, the TIR Carnet holder presents the road vehicle, the combination of vehicles or the container to the customs officer along with the reference to the advance TIR data previously submitted. This reference was received in the **E10 - Advance TIR data results** message or in the acknowledgement of the other way of submitting advance TIR data, authorized by the customs administration of the country of departure.

With this reference, the customs officer finds in the national customs system the associated advance TIR data and checks the goods according to it. After this verification, the customs officer prepares the declaration that the national customs system will send to the eTIR international system using the **I7 - Record declaration data** message. Depending on the results of the verification, the declaration data might be exactly the same as the advance TIR data or the customs officer may wish to carry out changes to it and/or add additional information.



In all cases, the declaration data should contain all attached documents that were initially sent along with the advance TIR data. Indeed, these additional documents might be required by countries along the itinerary in order to meet their national requirements.

Case of an amendment to the declaration

In order to amend the declaration, the TIR Carnet holder has previously sent advance amendment data with the **E11 - Advance amendment data** message to the relevant customs office. During the TIR transport, the TIR Carnet holder presents road vehicle, the combination of vehicles or the container to that customs office along with the reference to the advance amendment data previously submitted. This reference was received in the **E12 - Advance amendment data results** message or in the acknowledgement of the other way of submitting advance TIR data, authorized by the customs administration of the country of the customs office in question.

With this reference, the customs officer finds in the national customs system the associated advance amendment data and checks the amendment according to it. The amendment can be about loading additional goods, the change of the itinerary, the change of the tractor unit, etc. After this verification, the customs officer prepares the amendment to the declaration that the national customs system will

send to the eTIR international system using the **I7 - Record declaration data** message. Depending on the results of the verification, this amendment to the declaration might be exactly the same as the advance amendment data or the customs officer may wish to carry out changes to it and/or add additional information.



In all cases, the amendment to the declaration should contain all attached documents that were initially sent along with the advance amendment data. Indeed, these additional documents might be required by countries along the itinerary in order to meet their national requirements.

6.3.7. Example

The example below shows the XML data to be sent via POST method to the eTIR international system [endpoint URL](#) to record the information related to the beginning of the TIR transport related to the eGuarantee **XF95001234**. This declaration data was issued on the date of **2021-04-09 09:45 UTC+4** by the customs office **GE0715**. It describes a consignment of 15 tons of "COVID-19 Diagnostic Test instruments and apparatus" sent by truck from Georgia to Iran (through Turkey) by the TIR Carnet holder **GEO/054/9890**. There is a CMR as an attached document and also the certificate of approval for the transport equipment.

I7 - Record declaration data request message

```
<?xml version="1.0" encoding="UTF-8"?>
<soap:Envelope xmlns:soap="http://www.w3.org/2003/05/soap-envelope">
  <soap:Header xmlns:wsa="http://www.w3.org/2005/08/addressing">
    (...)
    <wsa:Action>etir:v4.3:customs/recordDeclarationData</wsa:Action>
    <wsa:MessageID>uuid:8a20af11-8170-432d-9563-6a89b32ef745</wsa:MessageID>
    (...)
  </soap:Header>
  <soap:Body xmlns:wssu="http://docs.oasis-open.org/wss/2004/01/oasis-200401-wss-wssecurity-utility-1.0.xsd"
    wsu:Id="id-da9c5c60-f393-4240-9fd5-54d54fffae83">
    <cus:recordDeclarationData xmlns:cus="etir:v4.3:customs" xmlns:etir="etir:I7:v4.3" xmlns:ds=
"etir:MetaData_DS:v4.3">
      <etir:InterGov>
        <etir:Function>9</etir:Function>
        <etir:ID>94363297-44bc-4814-9e00-1a35b7a3d614</etir:ID>
        <etir:TypeCode>I7</etir:TypeCode>
        <etir:Declaration>
          <etir:IssueDateTime formatCode="208">20210409094536+0400</etir:IssueDateTime>
          <!--Optional:-->
          <etir:AdditionalInformation>
            <etir:StatementCode>0</etir:StatementCode>
          </etir:AdditionalInformation>
          <!--Optional:-->
          <etir:Agent>
            <ds:ID>AG2457-GE0154</ds:ID>
            <ds:RoleCode>AG</ds:RoleCode>
          </etir:Agent>
          <!--Optional:-->
          <etir:Carrier>
            <ds:ID>GEO/054/9890</ds:ID>
          </etir:Carrier>
          <!--Zero or more repetitions:-->
          <etir:Consignment>
            <ds:SequenceNumeric>1</ds:SequenceNumeric>
            <!--Zero or more repetitions:-->
            <ds:AdditionalDocument>
              <ds:ID>attached_document_001</ds:ID>
              <ds:IssueDateTime formatCode="102">20210403</ds:IssueDateTime>
              <ds:TypeCode>730</ds:TypeCode>
              <ds:BinaryFile>
```

```

<ds:ID>1</ds:ID>
<ds:Title>CMR</ds:Title>
<ds:IncludedBinaryObjectBinaryObject>dGhpcyBpcyBhIH (...)
Rlc3QgZmlsZQ==</ds:IncludedBinaryObjectBinaryObject>
<ds:AuthorName>Mikheil Beridze</ds:AuthorName>
<ds:VersionID>1</ds:VersionID>
<ds:FileNameText>cmr12482.pdf</ds:FileNameText>
<ds:MIMECode>application/pdf</ds:MIMECode>
<ds:EncodingCode>UTF-8</ds:EncodingCode>
<ds:CharacterSetCode>UTF-8</ds:CharacterSetCode>
<ds>Description>The CMR linked to the TIR transport</ds>Description>
<ds:SizeMeasure unitCode="2P">754</ds:SizeMeasure>
<ds:TypeCode>pdf</ds:TypeCode>
<ds:HashCode>54b0c58c7ce9f2a8b551351102ee0938</ds:HashCode>
<ds:HashCodeAlgorithmIDCode>MD5</ds:HashCodeAlgorithmIDCode>
</ds:BinaryFile>
</ds:AdditionalDocument>
<!--1 or more repetitions:-->
<ds:ConsignmentItem>
  <ds:SequenceNumeric>1</ds:SequenceNumeric>
  <!--Zero or more repetitions:-->
  <ds:AdditionalInformation>
    <ds:Content>Instruments used in clinical laboratories for In Vitro Diagnosis
    </ds:Content>
  </ds:AdditionalInformation>
  <ds:Commodity>
    <ds:CargoDescription>COVID-19 Diagnostic Test instruments and apparatus
    </ds:CargoDescription>
    <!--Zero or more repetitions:-->
    <ds:Classification>
      <ds:ID>9027.80</ds:ID>
      <ds:IdentificationTypeCode>HS</ds:IdentificationTypeCode>
    </ds:Classification>
  </ds:Commodity>
  <!--Optional:-->
  <ds:Consignee>
    <ds:ID>CE368324456</ds:ID>
  </ds:Consignee>
  <!--Optional:-->
  <ds:Signor>
    <ds:ID>C0654832668</ds:ID>
  </ds:Signor>
  <!--Optional:-->
  <ds:DeliveryDestination>
    <ds:Name>Tehran Fictitious Hospital</ds:Name>
    <ds:Address>
      <ds:CityName>Tehran</ds:CityName>
      <ds:CountryCode>IR</ds:CountryCode>
      <ds:Line>Shoosh St</ds:Line>
      <ds:PostcodeID>1230</ds:PostcodeID>
    </ds:Address>
  </ds:DeliveryDestination>
  <ds:GoodsMeasure>
    <ds:GrossMassMeasure>15000</ds:GrossMassMeasure>
  </ds:GoodsMeasure>
  <ds:Packaging>
    <ds:TypeCode>V0</ds:TypeCode> <!-- no quantity rule C002 !-->
  </ds:Packaging>
  <!--Optional:-->
  <ds:TransportEquipment>
    <ds:ID>TE1</ds:ID>
  </ds:TransportEquipment>
  <!--Optional:-->
  <ds:UCR>
    <!--Optional:-->
    <ds:ID>UCR</ds:ID>
  </ds:UCR>

```

```

</ds:ConsignmentItem>
<!--Optional:-->
<ds>LoadingLocation>
  <!--Optional:-->
  <ds>Name>Fictitious Factory</ds>Name>
</ds>LoadingLocation>
<ds>TransitDeparture>
  <ds>ID>GE0715</ds>ID>
</ds>TransitDeparture>
<ds>TransitDestination>
  <ds>ID>IR10210</ds>ID>
</ds>TransitDestination>
<!--1 or more repetitions:-->
<ds>TransitTransportMeans>
  <ds>ID>CM-875-KZ</ds>ID>
  <ds>TypeCode>33</ds>TypeCode>
  <ds>RegistrationNationalityCode>GE</ds>RegistrationNationalityCode>
  <ds>JourneyID>J-12745124</ds>JourneyID>
  <ds>Itinerary>
    <ds>SequenceNumeric>1</ds>SequenceNumeric>
    <ds>RoutingCountryCode>GE</ds>RoutingCountryCode>
  </ds>Itinerary>
  <ds>Itinerary>
    <ds>SequenceNumeric>2</ds>SequenceNumeric>
    <ds>RoutingCountryCode>TR</ds>RoutingCountryCode>
  </ds>Itinerary>
  <ds>Itinerary>
    <ds>SequenceNumeric>3</ds>SequenceNumeric>
    <ds>RoutingCountryCode>IR</ds>RoutingCountryCode>
  </ds>Itinerary>
</ds>TransitTransportMeans>
<!--Zero or more repetitions:-->
<ds>TransportEquipment>
  <ds>SequenceNumeric>1</ds>SequenceNumeric>
  <ds>CharacteristicCode>CC1</ds>CharacteristicCode>
  <ds>ID>TE1</ds>ID>
  <ds>AdditionalDocument>
    <ds>ID>CoA-4873218</ds>ID>
    <ds>IssueDateTime formatCode="208">20201122113346+0400</ds>IssueDateTime>
    <ds>TypeCode>CoA</ds>TypeCode>
    <ds>BinaryFile>
      <ds>ID>1</ds>ID>
      <ds>Title>Certificate of approval</ds>Title>
      <ds>AuthorName>Georgian customs</ds>AuthorName>
      <ds>VersionID>1</ds>VersionID>
      <ds>URIID>https://my.server/fileFolder/CoA.pdf</ds>URIID>
      <ds>Access>Password:mysecurepassword</ds>Access>
      <ds>Description>The scan copy of the certificate of approval of the TIR
truck</ds>Description>
      <ds>SizeMeasure unitCode="4L">2.457</ds>SizeMeasure>
      <ds>TypeCode>pdf</ds>TypeCode>
      <ds>HashCode>4b8c7b76204678a76d6a8ab83f5563d0</ds>HashCode>
      <ds>HashCodeAlgorithmIDCode>MD5</ds>HashCodeAlgorithmIDCode>
    </ds>BinaryFile>
  </ds>AdditionalDocument>
</ds>TransportEquipment>
</etir>Consignment>
<!--Zero or more repetitions:-->
<etir>DeclarationGuarantee>
  <etir>ExpirationDateTime formatCode="102">20211122</etir>ExpirationDateTime>
  <etir>ReferenceID>XF95001234</etir>ReferenceID>
</etir>DeclarationGuarantee>
<!--Optional:-->
<!--principal mandatory for process even if not in wsdl-->
<etir>Principal>
  <etir>ID>GE0/054/9890</etir>ID>
</etir>Principal>

```

```
</etir:Declaration>
</etir:InterGov>
</cus:recordDeclarationData>
</soap:Body>
</soap:Envelope>
```



Some field original contents have been shortened (...) in this document for the sake of readability, in particular the content of the attached document and the whole **header/security** content that is described in the [eTIR web services introduction document](#).



2 other examples of the 17 - Record declaration data request message and of the 18 - Record declaration data results response message are available in the [More examples](#) annex of this document illustrating in particular the amendment use cases.

6.4. "I8 - Record declaration data results" response message

6.4.1. Description

The eTIR international system sends back the **I8 - Record declaration data results** response message to the national customs systems to confirm the correct reception and recording of the declaration data as well as the national references for printing the accompanying document.

The XSD file related to the **I8 - Record declaration data results** message is available at the following URL: https://wiki.unece.org/download/attachments/106299941/WCO_eTIR_I8_1.xsd.

6.4.2. Field list

eTIR field name	Mapping to the XML element (XPATH)	Mandatory	Cardinality	Format	Code lists	Conditions	Rules
MESSAGE							
└ Message function, coded	Function	R	1..1	n..2	CL16		
└ Original Message Identifier	FunctionalReferenceID		1..1	an..70			
└ Message identifier	ID	R	1..1	an..70			
└ Type, coded	TypeCode	R	1..1	an..3	CL26		
└─ DECLARATIONDATA	Declaration	R	1..1				
└─ NATIONALREFERENCE	Declaration/NationalReference	O	0..*				
└ Reference	Declaration/NationalReference/ID	R	1..1	an..35			
└ Country, coded	Declaration/NationalReference/IssuingCountryCode	R	1..1	a2	CL04		
└─ ERROR	Error	D	0..*			C006	
└ Error, coded	Error/ValidationCode	R	1..1	an..8	CL99		
└─ POINTER	Error/Pointer	R	1..*				
└ Sequence number	Error/Pointer/SequenceNumeric	R	1..1	n..5			
└ Location	Error/Pointer/Location	R	1..1	an..512			

6.4.3. Field descriptions

eTIR field name	Mapping to the XML element (XPATH)	Description	Usage
MESSAGE			

eTIR field name	Mapping to the XML element (XPATH)	Description	Usage
└ Message function, coded	Function	Code describing the function of the message	The value should be "44" if the request was processed correctly. If at least one error is described in this message, the value should be "27"
└ Original Message Identifier	FunctionalReferenceID	Unique identifier of the request message associated with this response	The value should be the one mentioned in the message identifier field of the request message (17)
└ Message identifier	ID	Unique identifier of the message	The value should be a Globally Unique Identifier (GUID) as detailed in the dedicated section of the introduction document
└ Type, coded	TypeCode	Code of the message type	The value should be set to "18"
└└ DECLARATIONDATA	Declaration	Class representing the declaration data as accepted by customs	
└└ NATIONALREFERENCE	Declaration/NationalReference	Class representing the list of national references under which the declaration data has been saved in the countries along the itinerary of the transport	
└ Reference	Declaration/NationalReference/ID	Identifier of the national reference of the declaration	The value should be the identifier of the national reference under which the declaration has been saved in the country which has received the "I15 - Notify customs" notification message
└ Country, coded	Declaration/NationalReference/IssuingCountryCode	Code of the country along the itinerary	The value should be the code of the country which has received the notification "I7" from the list Country name code (ISO 3166-1-alpha-2) (https://www.unece.org/fileadmin/DAM/trans/bcf/eTIR/documents/CodeLists0_4.pdf#page=38)
└└ ERROR	Error	Class representing the list of errors, if any	
└ Error, coded	Error/ValidationCode	Code of the error type	The value should be the code of the error from the list Error code (eTIR)
└└ POINTER	Error/Pointer	Class representing the pointer to the erroneous field, if any	
└ Sequence number	Error/Pointer/SequenceNumeric	Index of the error in the list	The value should be the 1-based index of the error in the list
└ Location	Error/Pointer/Location	Location of the erroneous field	The value should be the location of the erroneous field following the XPath syntax. Additional details regarding the location of the fields per error code are available on the page dedicated to errors



When reading the values of the second columns for both tables, note that the "InterGov/" XML base element has been removed to improve the readability, as it is repeated on every line.

6.4.4. Referred code lists

The following code lists are referred to in the field lists and should be considered when sending the message:

- [CL04](#) - Country name code (ISO 3166-1-alpha-2)
- [CL16](#) - Message function code (UN/EDIFACT 1225)
- [CL26](#) - Message types (eTIR)
- [CL99](#) - Error code (eTIR)



All code lists are described in the [eTIR code lists document](#).

6.4.5. Conditions and Rules

The following conditions of the [eTIR conditions list](#) are referred to in the field lists and should be considered in the message:

- **C006:** IF(MESSAGE.Message function, coded) = '6' OR '11' OR '44' OR '45'
THEN EMPTY(ERROR)
ELSE
IF(MESSAGE.Message function, coded) = '10' OR '27'
THEN NOT EMPTY(ERROR)

6.4.6. How to use response data in the national customs systems

The eTIR international system will return whether there were errors while processing the request message by filling in the "Error" list. Therefore, and as for all response messages expected from the eTIR international system, the first step when parsing the **I8 - Record declaration data results** response message should always be to look for potential error elements in the response message and address them accordingly as mentioned in the Error Management section of the [Introduction document](#).

If there was no error, and the response message content is as expected, the next step for the national customs systems is to record all national references sent back by the countries along the itinerary of the transport. These national references will then be included into the accompanying document that will be generated by the national customs systems and handed over to the truck driver. This accompanying document can then be used in case of accident/incident "en route" or for the fallback procedures.

After having performed this action, the next step for the customs officer is to enter the details about the seal(s) affixed to the road vehicle, the combination of vehicles or the container in the national customs systems so that it can send the notification of the start of the TIR operation to the eTIR international system using the **I9 - Start TIR operation** message.

6.4.7. Applicable error codes

As the eTIR international system may return error codes, the [eTIR web services introduction document](#) contains a dedicated section describing how and where to find those error codes in the response messages. Find below the list of error codes that may be returned as part of the **I8 - Record declaration data results** response message as well as the recommended actions to address them:

100 - Invalid message

Kindly check the message itself and its format as it is not recognized by the eTIR international system. Kindly contact the eTIR service desk sending the content of the message communicated,

the timestamps and the steps to reproduce this issue in order to address it.

101 - Missing field

Kindly check the message parameters, in particular the parameters marked as mandatory in the message description section of this document, and make sure that all mandatory parameters are part of the message.

102 - Invalid domain for the value

Kindly check the coded parameter, its values and corresponding code lists. Make sure that each coded parameter is using one of the values of the corresponding code list.

103 - Malformed date

Kindly check the date parameters and their format. Make sure that each date format has the format indicated and that the value follows the format/pattern.

104 - Not an integer

Kindly check the integer parameters. Make sure that each integer parameter has a value that can successfully be casted as an integer.

102 - Invalid domain for the value

Kindly check the coded parameter, its values and corresponding code lists. Make sure that each coded parameter is using one of the values of the corresponding code list.

105 - Max value length exceeded

Kindly check the parameter value lengths. Make sure that each parameter length does not exceed the max length as defined in the documentation in the Format column.

106 - Invalid pattern

Kindly check the pattern of the parameter value as it does not match the requirements set for this attribute in XML Schema Definition of the message.

107 - Invalid element

Kindly check the element specified as it may not follow the order defined in the XML Schema Definition of the message.

151 - Condition C001 failure

Kindly check the parameters constrained by the condition [C001] and make sure their values respect:

```
IF EXIST( PARTY.code )  
THEN NOT EMPTY( PARTY.code )  
ELSE NOT EMPTY( PARTY.name , ADDRESS ).
```

152 - Condition C002 failure

Kindly check the parameters constrained by the condition [C002] and make sure their values respect:

```
IF ( PACKAGING.Type, coded ) =  
"VQ", "VG", "VL", "VY", "VR" OR "VO"  
THEN EMPTY ( PACKAGING.Number of packages )  
ELSE ( PACKAGING.Number of packages ) > 0.
```

153 - Condition C003 failure

Kindly check the parameters constrained by the condition [C003] and make sure their values respect:

```
IF( ADVANCE TIR DATA.ADDITIONALINFORMATION.Heavy and bulky goods  
indicator ) = 0
```

THEN NOT EMPTY(TRANSPORTEQUIPMENT)
ELSE EMPTY(TRANSPORTEQUIPMENT).

154 - Condition C004 failure

Kindly check the parameters constrained by the condition [C004] and make sure their values respect:

IF EMPTY(GOODS.CLASSIFICATION) OR (GOODS.CLASSIFICATION.Type) <> 'HS'
THEN NOT EMPTY(GOODS.Description).

155 - Condition C005 failure

Kindly check the parameters constrained by the condition [C005] and make sure their values respect:

IF(ADVANCE TIR DATA.ADDITIONALINFORMATION.Heavy and bulky goods
indicator) = 0
THEN NOT EMPTY(TRANSPORTEQUIPMENT.CERTIFICATEOFAPPROVAL)
ELSE EMPTY(TRANSPORTEQUIPMENT.CERTIFICATEOFAPPROVAL).

158 - Condition C008 failure

Kindly check the parameters constrained by the condition [C008] and make sure their values respect:

IF(MESSAGE.Message function, coded) = '1'
THEN EMPTY(ADDITIONALINFORMATION, AGENT,AMENDMENT, SUBCONTRACTOR,
CONSIGMENT,GUARANTEE,HOLDER) AND NOT EMPTY(MESSAGE.FunctionalReference)
ELSE IF(MESSAGE.Message function, coded) = '4'
THEN NOT EMPTY(MESSAGE.FunctionalReference, AMENDMENT,
ADDITIONALINFORMATION,
CONSIGMENT,GUARANTEE,HOLDER)
ELSE IF(MESSAGE.Message function, coded) = '9'
THEN EMPTY(MESSAGE.FunctionalReference, AMENDMENT) AND NOT EMPTY
(ADDITIONALINFORMATION, CONSIGMENT,GUARANTEE,HOLDER).

200 - Invalid State

Kindly check the state of the referred object (transport, guarantee, ...) and make sure it is consistent with the eTIR international system requested web service called.

300 - Invalid Operation

Kindly check the message content as it triggered a technical error in the eTIR international system but this one could not identify the source of the issue.

301 - eGuarantee not found

Kindly check the value of the eGuarantee reference ID in the message and make sure it matches the value received in previous messages.

302 - eGuarantee chain not found

Kindly check the value of the eGuarantee chain ID in the message and make sure it matches the value received in previous messages.

303 - eGuarantee type not found

Kindly check the value of the eGuarantee type in the message and make sure it belongs to the [Guarantee type code \(eTIR\)](#) code list, and that it matches the value received in previous messages.

304 - Customs Office not found

Kindly check the format and value of the customs office ID in the message and make sure it matches the value received in previous messages. If it does, kindly check the existence of the customs office and its status using ITDB web service or ITDB web application.

305 - Country not found

Kindly check the value of the country code in the message and make sure it matches the value received in previous messages and that it belongs to the [Country name code \(ISO 3166-1-alpha-2\) code list \(CL04\)](#).

400 - eTIR internal errors

Kindly contact eTIR support (see [Support and contact](#)) sending the content of the message communicated, the timestamps and the steps to reproduce this issue in order to address it.



The full list of error codes can be found on the [dedicated error code list web page](#).

6.4.8. Example

The example below shows the XML data of the **I8 - Record declaration data results** message received in response to the POST of the **I7 - Record declaration data** message. This response message (Function code **44 - Accepted without reserves**) of the type **I8**, containing no error codes, describes a positive acknowledgment of the declaration data related to the guarantee reference ID **XF95001234**. It was registered in the countries along the itinerary, and the 2 national references are provided. These references will be used to generate the accompanying document that will be handed over to the truck driver. Therefore, it should be considered that the declaration data has been duly recorded in the eTIR international system.



It is important to understand that the absence of error in the **I8 - Record declaration data results** response message is the key indicator to reflect that the record of the declaration data is accepted.

I8 - Record declaration data results response message

```
<?xml version="1.0" encoding="UTF-8"?>
<soap:Envelope xmlns:soap="http://www.w3.org/2003/05/soap-envelope">
  <soap:Header xmlns:wsa="http://www.w3.org/2005/08/addressing">
    (...)
    <wsa:Action>etir:v4.3:customs/recordDeclarationDataResponse</wsa:Action>
    <wsa:MessageID>uuid:8350af11-8170-495d-9563-6a87e32ef745</wsa:MessageID>
    (...)
  </soap:Header>
  <soap:Body xmlns:wsu="http://docs.oasis-open.org/wss/2004/01/oasis-200401-wss-wssecurity-utility-1.0.xsd"
    wsu:Id="id-c64dca31-aaf8-4232-a9b3-03c89698547b">
    <cus:recordDeclarationDataResponse xmlns:cus="etir:v4.3:customs" xmlns:etir="etir:I8:v4.3">
      <etir:InterGov>
        <etir:Function>44</etir:Function>
        <etir:FunctionalReferenceID>94363297-44bc-4814-9e00-1a35b7a3d614</etir:FunctionalReferenceID>
        <etir:ID>e5ba8867-e377-4279-b423-adc46297cdb5</etir:ID>
        <etir:TypeCode>I8</etir:TypeCode>
        <etir:Declaration>
          <etir:ID>XF95001234</etir:ID>
          <etir:NationalReference>
            <etir:ID>eTIR-425782</etir:ID>
            <etir:IssuingCountryCode>TR</etir:IssuingCountryCode>
          </etir:NationalReference>
          <etir:NationalReference>
            <etir:ID>TIR-XF95001234</etir:ID>
            <etir:IssuingCountryCode>IR</etir:IssuingCountryCode>
          </etir:NationalReference>
        </etir:Declaration>
      </etir:InterGov>
    </cus:recordDeclarationDataResponse>
  </soap:Body>
</soap:Envelope>
```



Some field original contents have been shortened (...) in this document for the sake of readability, in particular the whole **header/security** content that is described in the [eTIR web services introduction document](#).

7. Fallback procedures

In the event that the **I7 - Record declaration data** could not be sent after several attempts or if no **I8 - Record declaration data results** was received in response, we recommend the national customs systems team to contact eTIR support ([Support and contact](#)).

Also note that the functional fallback procedures can be found in the [Approved amendments to the eTIR conceptual, functional and technical documentation](#).

8. Support and contact

Kindly note that in the context of the interconnections projects by customs, the TIR secretariat stands ready to assist contracting parties while interconnecting their national customs systems to the eTIR international system. Also, in case of questions or issues related to this document or to the eTIR international system, you can use the contact details below (contacts by email should be preferred).

Organization United Nations Economic Commission For Europe
TIR secretariat
Palais des Nations,
1211 Geneva 10, Switzerland

Contact Email: etir@un.org
Phone: +41 (0)22 917 55 06

9. Annexes

9.1. Version history

Date	Author	Version	Notes	eTIR specification version reference
23/11/2020	TIR Secretariat	1.0	Initial draft	4.3a
16/04/2020	TIR Secretariat	1.1	Updated messages structure and XML examples. Added information about amended declaration data.	4.3a
19/05/2021	TIR Secretariat	1.2	Updated messages structure and XML examples to align them with eTIR standards recent changes.	4.3a

9.2. More examples

Please find below 2 additional examples of the I7 - Record declaration data / I8 - Record declaration data results messages illustrating amendment use cases.

9.2.1. Example 1: additional consignment

I7 - Record declaration data request message:

The example below shows the XML data to be sent via POST method to the eTIR international system [endpoint URL](#) to record the amended declaration data related to the TIR transport related to the guarantee **XF95001234**. This I7 message follows an E11 message previously received from the Holder to request such amendment linked to the loading of an additional consignment in Georgia. This amended declaration data was issued on the date of **2021-04-10 09:45 UTC+4** by the customs office **GE0716**, different from the first customs office of departure, **GE0715**. It describes an amendment to the declaration of type **01 (Addition)** related to an additional consignment of 8 tons of "COVID-19 Diagnostic Test base materials" sent by truck from Georgia to Iran (through Turkey) by the TIR Carnet holder **GEO/054/9890**.

I7 - Record declaration data request message

```
<?xml version="1.0" encoding="UTF-8"?>
<soap:Envelope xmlns:soap="http://www.w3.org/2003/05/soap-envelope">
  <soap:Header xmlns:wsa="http://www.w3.org/2005/08/addressing">
    (...)
    <wsa:Action>etir:v4.3:customs/recordDeclarationData</wsa:Action>
    <wsa:MessageID>uuid:8a20af11-8170-432d-9563-6a89b32ef745</wsa:MessageID>
    (...)
  </soap:Header>
  <soap:Body xmlns:wsu="http://docs.oasis-open.org/wss/2004/01/oasis-200401-wss-wssecurity-utility-1.0.xsd"
    wsu:Id="id-da9c5c60-f393-4240-9fd5-54d54fffae83">
    <cus:recordDeclarationData xmlns:cus="etir:v4.3:customs" xmlns:etir="etir:I7:v4.3" xmlns:ds=
"etir:MetaData_DS:v4.3">
      <etir:InterGov>
        <etir:Function>4</etir:Function>
        <etir:ID>b75a9604-008b-4aa3-acc6-1f6b3f0d1b4c</etir:ID>
        <etir:TypeCode>I7</etir:TypeCode>
        <etir:Declaration>
          <etir:IssueDateTime formatCode="208">20210410094536+0400</etir:IssueDateTime>
          <etir:Amendment>
            <etir:ChangeReasonCode>01</etir:ChangeReasonCode>
            <!--1 or more repetitions:-->
            <etir:Pointer>
              <etir:SequenceNumeric>1</etir:SequenceNumeric>
              <etir:Location>/Declaration/Consignment</etir:Location>
            </etir:Pointer>
          </etir:Amendment>
          <!--Optional:-->
          <etir:AdditionalInformation>
            <etir:StatementCode>0</etir:StatementCode>
          </etir:AdditionalInformation>
          <!--Optional:-->
          <etir:Agent>
            <ds:ID>AG2457-GE0154</ds:ID>
            <ds:RoleCode>AG</ds:RoleCode>
          </etir:Agent>
          <!--Optional:-->
          <etir:Carrier>
            <ds:ID>GEO/054/9890</ds:ID>
          </etir:Carrier>
          <!--Zero or more repetitions:-->
          <etir:Consignment>
            <ds:SequenceNumeric>2</ds:SequenceNumeric>
```

```

<!--Zero or more repetitions:-->
<ds:AdditionalDocument>
  <ds:ID>attached_document_001</ds:ID>
  <ds:IssueDateTime formatCode="102">20210403</ds:IssueDateTime>
  <ds:TypeCode>730</ds:TypeCode>
  <ds:BinaryFile>
    <ds:ID>1</ds:ID>
    <ds>Title>CMR</ds>Title>
    <ds:IncludedBinaryObjectBinaryObject>dGhpcyBpcyBhIH (...)
RdffQgZmlsZQ==</ds:IncludedBinaryObjectBinaryObject>
    <ds:AuthorName>Mikheil Beridze</ds:AuthorName>
    <ds:VersionID>1</ds:VersionID>
    <ds:FileNameText>cmr12483.pdf</ds:FileNameText>
    <ds:MIMECode>application/pdf</ds:MIMECode>
    <ds:EncodingCode>UTF-8</ds:EncodingCode>
    <ds:CharacterSetCode>UTF-8</ds:CharacterSetCode>
    <ds>Description>The CMR linked to the TIR transport</ds>Description>
    <ds:SizeMeasure unitCode="2P">754</ds:SizeMeasure>
    <ds>TypeCode>pdf</ds>TypeCode>
    <ds:HashCode>54b0c58c7ce9hrt58b551351102ee0938</ds:HashCode>
    <ds:HashCodeAlgorithmIDCode>MD5</ds:HashCodeAlgorithmIDCode>
  </ds:BinaryFile>
</ds:AdditionalDocument>
<!--1 or more repetitions:-->
<ds:ConsignmentItem>
  <ds:SequenceNumeric>2</ds:SequenceNumeric>
  <!--Zero or more repetitions:-->
  <ds:AdditionalInformation>
    <ds:Content>Base materials used in clinical laboratories for In Vitro Diagnosis
    </ds:Content>
  </ds:AdditionalInformation>
  <ds:Commodity>
    <ds:CargoDescription>COVID-19 Diagnostic Test base materials
    </ds:CargoDescription>
    <!--Zero or more repetitions:-->
    <ds:Classification>
      <ds:ID>9028.80</ds:ID>
      <ds:IdentificationTypeCode>HS</ds:IdentificationTypeCode>
    </ds:Classification>
  </ds:Commodity>
  <!--Optional:-->
  <ds:Consignee>
    <ds:ID>CE368324456</ds:ID>
  </ds:Consignee>
  <!--Optional:-->
  <ds:Consignor>
    <ds:ID>C0654832668</ds:ID>
  </ds:Consignor>
  <!--Optional:-->
  <ds:DeliveryDestination>
    <ds>Name>Tehran Fictitious Hospital</ds>Name>
    <ds:Address>
      <ds:CityName>Tehran</ds:CityName>
      <ds:CountryCode>IR</ds:CountryCode>
      <ds:Line>Shoosh St</ds:Line>
      <ds:PostcodeID>1230</ds:PostcodeID>
    </ds:Address>
  </ds:DeliveryDestination>
  <ds:GoodsMeasure>
    <ds:GrossMassMeasure>8000</ds:GrossMassMeasure>
  </ds:GoodsMeasure>
  <ds:Packaging>
    <ds>TypeCode>V0</ds>TypeCode> <!-- no quantity rule C002 !-->
  </ds:Packaging>
  <!--Optional:-->
  <ds:TransportEquipment>
    <ds:ID>TE1</ds:ID>

```



```

</ds:TransportEquipment>
<!--Optional:-->
<ds:UCR>
  <!--Optional:-->
  <ds:ID>UCR</ds:ID>
</ds:UCR>
</ds:ConsignmentItem>
<!--Optional:-->
<ds>LoadingLocation>
  <!--Optional:-->
  <ds>Name>Fictitious warehouse</ds>Name>
</ds>LoadingLocation>
<ds>TransitDeparture>
  <ds:ID>GE0716</ds:ID>
</ds>TransitDeparture>
<ds>TransitDestination>
  <ds:ID>IR10210</ds:ID>
</ds>TransitDestination>
<!--1 or more repetitions:-->
<ds>TransitTransportMeans>
  <ds:ID>CM-875-KZ</ds:ID>
  <ds:TypeCode>33</ds:TypeCode>
  <ds:RegistrationNationalityCode>GE</ds:RegistrationNationalityCode>
  <ds:JourneyID>J-12745124</ds:JourneyID>
  <ds>Itinerary>
    <ds:SequenceNumeric>1</ds:SequenceNumeric>
    <ds:RoutingCountryCode>GE</ds:RoutingCountryCode>
  </ds>Itinerary>
  <ds>Itinerary>
    <ds:SequenceNumeric>2</ds:SequenceNumeric>
    <ds:RoutingCountryCode>TR</ds:RoutingCountryCode>
  </ds>Itinerary>
  <ds>Itinerary>
    <ds:SequenceNumeric>3</ds:SequenceNumeric>
    <ds:RoutingCountryCode>IR</ds:RoutingCountryCode>
  </ds>Itinerary>
</ds>TransitTransportMeans>
<!--Zero or more repetitions:-->
<ds>TransportEquipment>
  <ds:SequenceNumeric>1</ds:SequenceNumeric>
  <ds:CharacteristicCode>CC1</ds:CharacteristicCode>
  <ds:ID>TE1</ds:ID>
  <ds>AdditionalDocument>
    <ds:ID>CoA-4873218</ds:ID>
    <ds:IssueDateTime formatCode="208">20201122113346+0400</ds:IssueDateTime>
    <ds:TypeCode>CoA</ds:TypeCode>
    <ds>BinaryFile>
      <ds:ID>1</ds:ID>
      <ds>Title>Certificate of approval</ds>Title>
      <ds>AuthorName>Georgian customs</ds>AuthorName>
      <ds>VersionID>1</ds>VersionID>
      <ds>URIID>https://my.server/fileFolder/CoA.pdf</ds>URIID>
      <ds>Access>Password:mysecurepassword</ds>Access>
      <ds>Description>The scan copy of the certificate of approval of the TIR
truck</ds>Description>
      <ds>SizeMeasure unitCode="4L">2.457</ds>SizeMeasure>
      <ds>TypeCode>pdf</ds>TypeCode>
      <ds>HashCode>4b8c7b76204678a76d6a8ab83f5563d0</ds>HashCode>
      <ds>HashCodeAlgorithmIDCode>MD5</ds>HashCodeAlgorithmIDCode>
    </ds>BinaryFile>
  </ds>AdditionalDocument>
</ds>TransportEquipment>
</etir>Consignment>
<!--Zero or more repetitions:-->
<etir>DeclarationGuarantee>
  <etir>ExpirationDateTime formatCode="102">20211122</etir>ExpirationDateTime>
  <etir>ReferenceID>XF95001234</etir>ReferenceID>

```

```

</etir:DeclarationGuarantee>
<!--principal mandatory for process even if not in wsdl-->
<etir:Principal>
  <etir:ID>GEO/054/9890</etir:ID>
</etir:Principal>
</etir:Declaration>
</etir:InterGov>
</cus:recordDeclarationData>
</soap:Body>
</soap:Envelope>

```



Some field original contents have been shortened (...) in this document for the sake of readability, in particular the whole **header/security** content that is described in the [eTIR web services introduction document](#).

I8 - Record declaration data results response message:

The example below shows the XML data of the **I8 - Record declaration data results** message received in response to the POST of the amendment **I7 - Record declaration data** message. This response message (Function code **44 - Accepted without reserves**) of the type **I8**, containing no error codes, describes a positive acknowledgment of the amended declaration data related to the guarantee reference ID **XF95001234**. It was registered in the countries along the itinerary, and the 2 national references are provided/confirmed. These references will be used to generate the accompanying document that will be handed over to the truck driver. Therefore, it should be considered that the declaration amendment data has been duly recorded in the eTIR international system.

I8 - Record declaration data results response message

```

<?xml version="1.0" encoding="UTF-8"?>
<soap:Envelope xmlns:soap="http://www.w3.org/2003/05/soap-envelope">
  <soap:Header xmlns:wsa="http://www.w3.org/2005/08/addressing">
    (...)
    <wsa:Action>etir:v4.3:customs/recordDeclarationDataResponse</wsa:Action>
    <wsa:MessageID>uuid:8350af11-8170-495d-9563-6a87e32ef745</wsa:MessageID>
    (...)
  </soap:Header>
  <soap:Body xmlns:wsu="http://docs.oasis-open.org/wss/2004/01/oasis-200401-wss-wssecurity-utility-1.0.xsd"
    wsu:Id="id-c64dca31-aaf8-4232-a9b3-03c89698547b">
    <cus:recordDeclarationDataResponse xmlns:cus="etir:v4.3:customs" xmlns:etir="etir:I8:v4.3">
      <etir:InterGov>
        <etir:Function>44</etir:Function>
        <etir:FunctionalReferenceID>b75a9604-008b-4aa3-acc6-1f6b3f0d1b4c</etir:FunctionalReferenceID>
        <etir:ID>8d0ed4f1-583a-4dca-adc3-5ac44e1ba3d5</etir:ID>
        <etir:TypeCode>I8</etir:TypeCode>
        <etir:Declaration>
          <etir:ID>XF95001234</etir:ID>
          <etir:NationalReference>
            <etir:ID>eTIR-425782</etir:ID>
            <etir:IssuingCountryCode>TR</etir:IssuingCountryCode>
          </etir:NationalReference>
          <etir:NationalReference>
            <etir:ID>TIR-XF95001234</etir:ID>
            <etir:IssuingCountryCode>IR</etir:IssuingCountryCode>
          </etir:NationalReference>
        </etir:Declaration>
      </etir:InterGov>
    </cus:recordDeclarationDataResponse>
  </soap:Body>
</soap:Envelope>

```

9.2.2. Example 2: Itinerary change

I7 - Record declaration data request message:

The example below shows the XML data to be sent via POST method to the eTIR international system [endpoint URL](#) to record the amended declaration data related to the TIR transport related to the guarantee **XF95001234**. This I7 message follows an E11 message previously received by the customs office **GE0717** from the Holder, to request a change of itinerary of the TIR transport where the intermediary country Turkey is being replaced by Azerbaijan. This amendment data was issued on the date of **2021-04-10 09:45 UTC+4** by the customs office **GE0717** (which is then located at the border by Azerbaijan). It describes a declaration amendment of type **02 (Change)** related to a change of itinerary where the intermediary country Turkey is being replaced by Azerbaijan for a consignment sent by truck from Georgia to Iran (**now through Azerbaijan**) by the TIR Carnet holder **GEO/054/9890**.

I7 - Record declaration data request message

```
<?xml version="1.0" encoding="UTF-8"?>
<soap:Envelope xmlns:soap="http://www.w3.org/2003/05/soap-envelope">
  <soap:Header xmlns:wsa="http://www.w3.org/2005/08/addressing">
    (...)
    <wsa:Action>etir:v4.3:customs/recordDeclarationData</wsa:Action>
    <wsa:MessageID>uuid:8a20af11-8170-432d-9563-6a89b32ef745</wsa:MessageID>
    (...)
  </soap:Header>
  <soap:Body xmlns:wsu="http://docs.oasis-open.org/wss/2004/01/oasis-200401-wss-wssecurity-utility-1.0.xsd"
    wsu:Id="id-da9c5c60-f393-4240-9fd5-54d54fffae83">
    <cus:recordDeclarationData xmlns:cus="etir:v4.3:customs" xmlns:etir="etir:I7:v4.3" xmlns:ds=
"etir:MetaData_DS:v4.3">
      <etir:InterGov>
        <etir:Function>4</etir:Function>
        <etir:ID>b88a9604-008b-4aa3-acc6-1f6b3f0d1b4c</etir:ID>
        <etir:TypeCode>I7</etir:TypeCode>
        <etir:Declaration>
          <etir:IssueDateTime formatCode="208">20210410094536+0400</etir:IssueDateTime>
          <etir:Amendment>
            <etir:ChangeReasonCode>02</etir:ChangeReasonCode>
            <!--1 or more repetitions:-->
            <etir:Pointer>
              <etir:SequenceNumeric>1</etir:SequenceNumeric>
              <etir:Location>/Declaration/Consignment/TransitTransportMeans/Itinerary</etir:Location>
            </etir:Pointer>
          </etir:Amendment>
          <!--Optional:-->
          <etir:AdditionalInformation>
            <etir:StatementCode>0</etir:StatementCode>
          </etir:AdditionalInformation>
          <!--Optional:-->
          <etir:Agent>
            <ds:ID>AG2457-GE0154</ds:ID>
            <ds:RoleCode>AG</ds:RoleCode>
          </etir:Agent>
          <!--Optional:-->
          <etir:Carrier>
            <ds:ID>TZH250E</ds:ID>
          </etir:Carrier>
          <!--Zero or more repetitions:-->
          <etir:Consignment>
            <ds:SequenceNumeric>1</ds:SequenceNumeric>
            <ds:TransitTransportMeans>
              <ds:ID>CM-875-KZ</ds:ID>
              <ds:Itinerary>
                <ds:SequenceNumeric>1</ds:SequenceNumeric>
                <ds:RoutingCountryCode>GE</ds:RoutingCountryCode>
              </ds:Itinerary>
            </ds:TransitTransportMeans>
          </etir:Consignment>
        </cus:recordDeclarationData>
      </soap:Body>
    </soap:Envelope>
```

```

<ds:Itinerary>
  <ds:SequenceNumeric>2</ds:SequenceNumeric>
  <ds:RoutingCountryCode>AZ</ds:RoutingCountryCode>
</ds:Itinerary>
<ds:Itinerary>
  <ds:SequenceNumeric>3</ds:SequenceNumeric>
  <ds:RoutingCountryCode>IR</ds:RoutingCountryCode>
</ds:Itinerary>
</ds:TransitTransportMeans>
</etir:Consignment>
<!--Zero or more repetitions:-->
<etir:DeclarationGuarantee>
  <etir:ExpirationDateTime formatCode="102">20211122</etir:ExpirationDateTime>
  <etir:ReferenceID>XF95001234</etir:ReferenceID>
</etir:DeclarationGuarantee>
<!--principal mandatory for process even if not in wsdl-->
<etir:Principal>
  <etir:ID>GEO/054/9890</etir:ID>
</etir:Principal>
</etir:Declaration>
</etir:InterGov>
</cus:recordDeclarationData>
</soap:Body>
</soap:Envelope>

```



Some field original contents have been shortened (...) in this document for the sake of readability, in particular the whole **header/security** content that is described in the [eTIR web services introduction document](#).

I8 - Record declaration data results response message:

The example below shows the XML data of the **I8 - Record declaration data results** message received in response to the POST of the amendment **I7 - Record declaration data** message. This response message (Function code **44 - Accepted without reserves**) of the type **I8**, containing no error codes, describes a positive acknowledgment of the amended declaration data related to the guarantee reference ID **XF95001234**. It was registered in the countries along the itinerary (including the new one), and the 2 national references are provided/confirmed. These references will be used to generate the accompanying document that will be handed over to the truck driver. Therefore, it should be considered that the declaration amendment data has been duly recorded in the eTIR international system.

I8 - Record declaration data results response message

```
<?xml version="1.0" encoding="UTF-8"?>
<soap:Envelope xmlns:soap="http://www.w3.org/2003/05/soap-envelope">
  <soap:Header xmlns:wsa="http://www.w3.org/2005/08/addressing">
    (...)
    <wsa:Action>etir:v4.3:customs/recordDeclarationDataResponse</wsa:Action>
    <wsa:MessageID>uuid:8350af11-8170-495d-9563-6a87e32ef745</wsa:MessageID>
    (...)
  </soap:Header>
  <soap:Body xmlns:wsu="http://docs.oasis-open.org/wss/2004/01/oasis-200401-wss-wssecurity-utility-1.0.xsd"
    wsu:Id="id-c64dca31-aaf8-4232-a9b3-03c89698547b">
    <cus:recordDeclarationDataResponse xmlns:cus="etir:v4.3:customs" xmlns:etir="etir:I8:v4.3">
      <etir:InterGov>
        <etir:Function>44</etir:Function>
        <etir:FunctionalReferenceID>b88a9604-008b-4aa3-acc6-1f6b3f0d1b4c</etir:FunctionalReferenceID>
        <etir:ID>de6d45ee-1529-4e62-9c2a-c93ab83bbf04</etir:ID>
        <etir:TypeCode>I8</etir:TypeCode>
        <etir:Declaration>
          <etir:ID>XF95001234</etir:ID>
          <etir:NationalReference>
            <etir:ID>247851:eTIR</etir:ID>
            <etir:IssuingCountryCode>AZ</etir:IssuingCountryCode>
          </etir:NationalReference>
          <etir:NationalReference>
            <etir:ID>TIR-XF95001234</etir:ID>
            <etir:IssuingCountryCode>IR</etir:IssuingCountryCode>
          </etir:NationalReference>
        </etir:Declaration>
      </etir:InterGov>
    </cus:recordDeclarationDataResponse>
  </soap:Body>
</soap:Envelope>
```