

DIAGRAMS

TITLE:

Ensayos Proyecto autobuses y SRI Q6-Q10

TEST NUMBER:

B204003TOHI

REGULATION:

ECE R80



Dummy Values Summary Table

Test # : B204003TOHI

VIN : SLED000000HOMOL01



Date : 2020-09-28

Dummy: Q10 / AQA01 / pos 4

Title : Ensayos Proyecto autobuses y SRI Q6-Q10

Speed: 30.43 km/h

HEAD

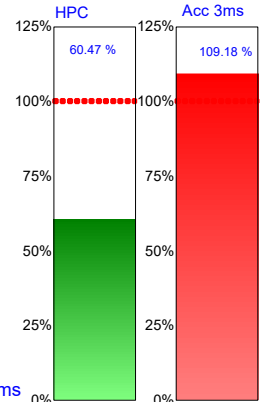
Head Resultant

CFC_1000

Head Resultant Acc:
97.95 g at 109.4 ms

HPC: 483.73
between 104.6 and 113.6 ms
60.47 % of limit value 800

Head Acc 3ms: 87.35 g
between 108.1 and 111.1 ms
109.18 % of limit value 80



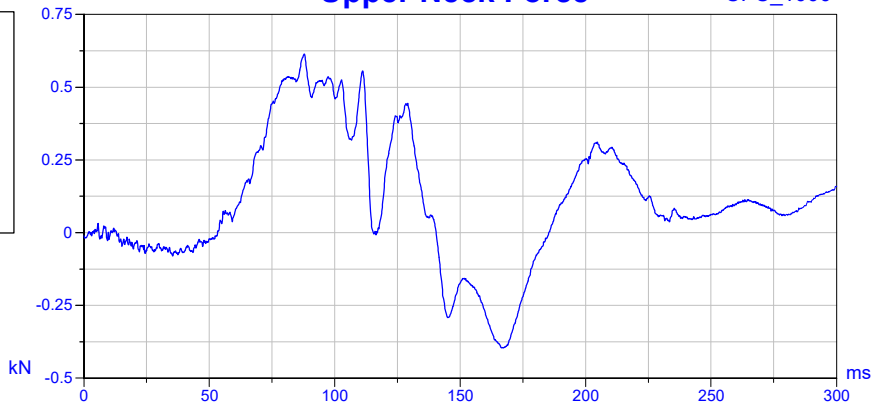
UPPER NECK

Upper Neck Force

CFC_1000

Neck tension force (Fz):
613.47 N at 87.9 ms

Neck bending moment (My):
17.03 Nm at 254.5 ms



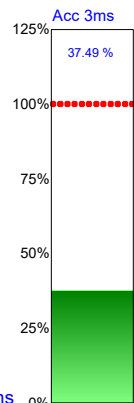
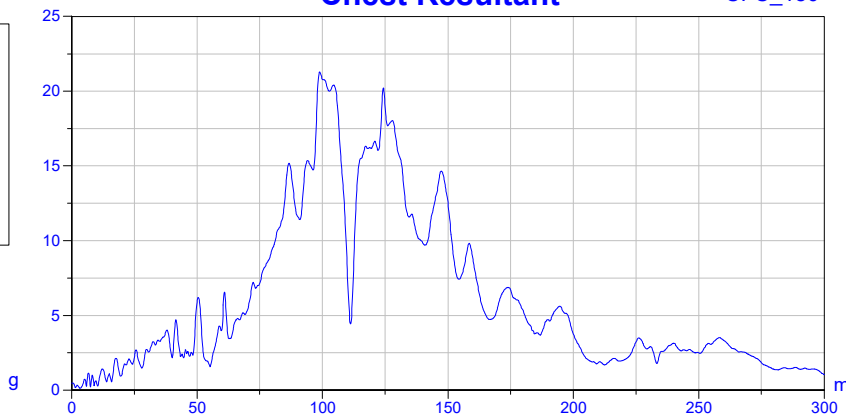
CHEST

Chest Resultant

CFC_180

Chest Resultant Acc:
21.29 g at 98.9 ms

Chest Acc 3ms: 20.62 g
between 98.3 and 101.3 ms
37.49 % of limit value 55



CHEST, ABDOMINAL

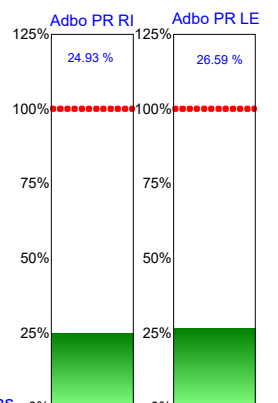
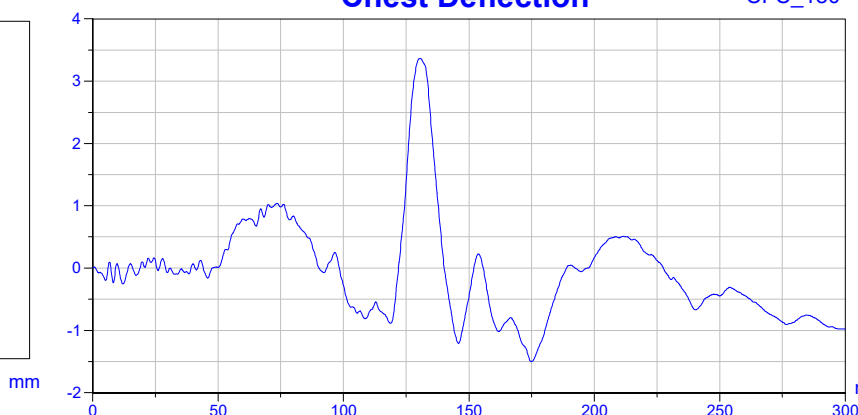
Chest Deflection

CFC_180

Chest Deflection:
-1.5 mm at 174.9 ms

Abdomen Pressure Right:
0.3 bar at 157.4 ms
24.93 % of limit value 1.2

Abdominal Pressure Left:
0.32 bar at 155.8 ms
26.59 % of limit value 1.2



Dummy Values Summary Table

Test # : B204003TOHI

VIN : SLED000000HOMOL01



Date : 2020-09-28

Dummy: Q6 / AQ601 / pos 6

Title : Ensayos Proyecto autobuses y SRI Q6-Q10

Speed: 30.43 km/h

HEAD

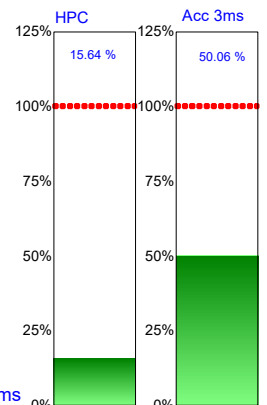
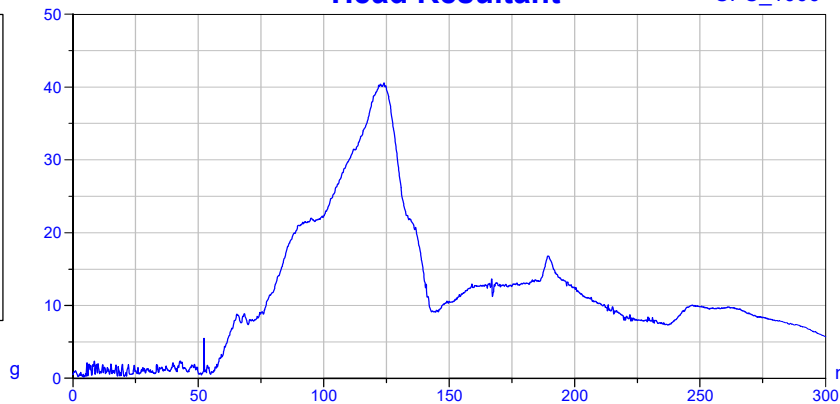
Head Resultant

CFC_1000

Head Resultant Acc:
40.56 g at 124 ms

HPC: 125.15
between 113.7 and 128.7 ms
15.64 % of limit value 800

Head Acc 3ms: 40.05 g
between 121.9 and 124.9 ms
50.06 % of limit value 80



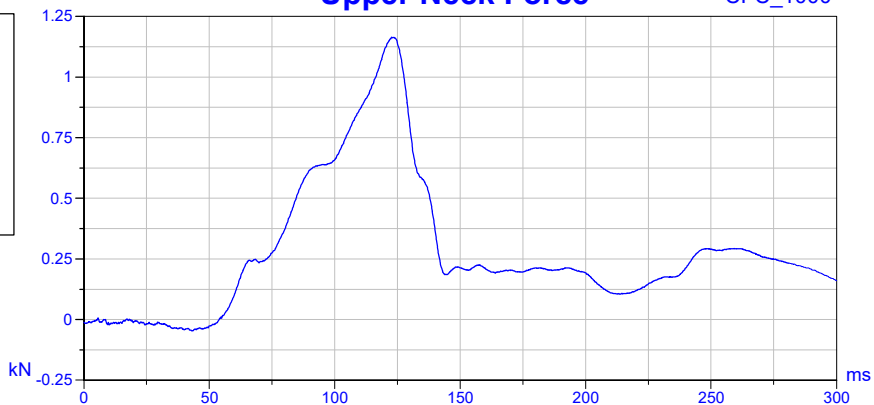
UPPER NECK

Upper Neck Force

CFC_1000

Neck tension force (Fz):
1163.86 N at 122.7 ms

Neck bending moment (My):
21.69 Nm at 202.1 ms



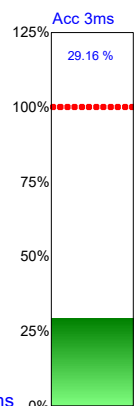
CHEST

Chest Resultant

CFC_180

Chest Resultant Acc:
16.88 g at 131.4 ms

Chest Acc 3ms: 16.04 g
between 130.5 and 133.5 ms
29.16 % of limit value 55



CHEST, ABDOMINAL

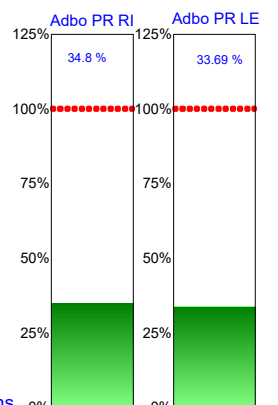
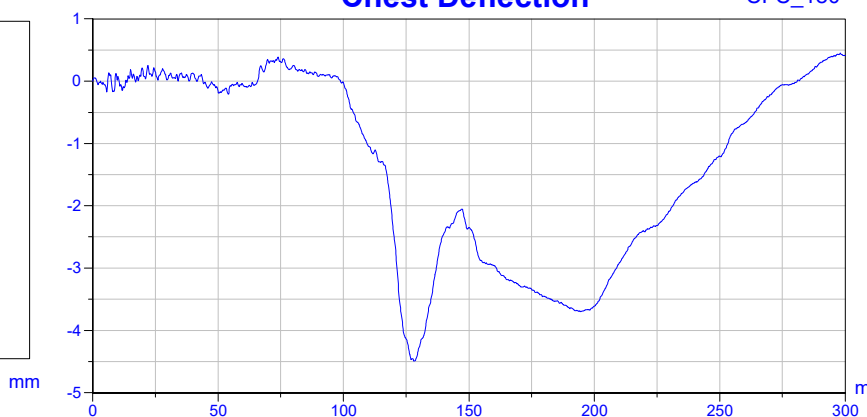
Chest Deflection

CFC_180

Chest Deflection:
-4.49 mm at 128.1 ms

Abdomen Pressure Right:
0.35 bar at 176.7 ms
34.8 % of limit value 1

Abdominal Pressure Left:
0.34 bar at 179.3 ms
33.69 % of limit value 1



Sled Pulse



Test # : B204003TOHI

Date : 2020-09-28

Title : Ensayos Proyecto autobuses y SRI Q6-Q10

Vehicle Type : Sled

VIN : SLED000000HOMOL01

Speed: 30.43 km/h

SLED Acc. Impact

CFC_60

