



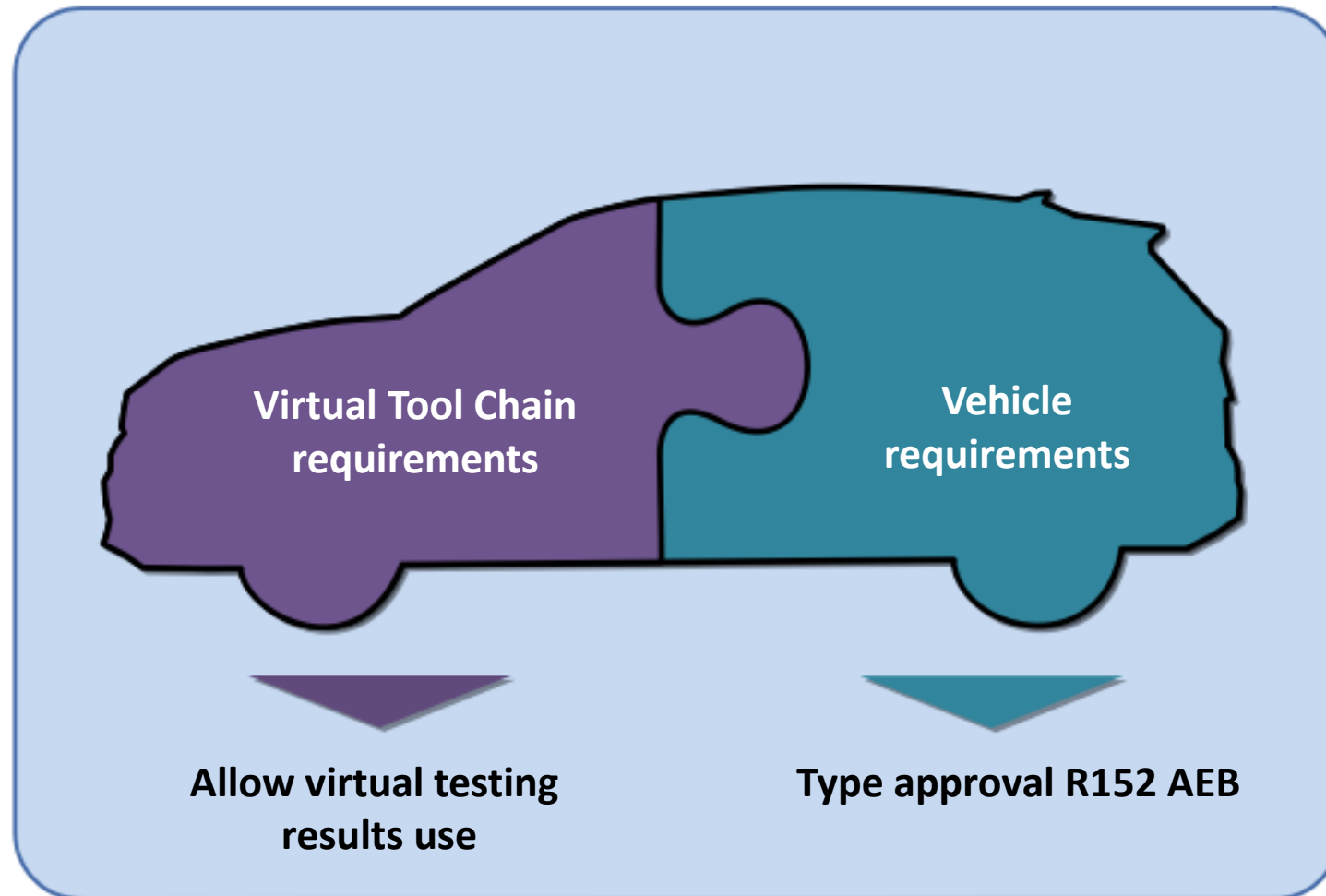
## UTAC CERAM virtual testing method Use case application

# REQUIRED PHYSICAL TESTING R152 (AEBS M1N1)

## UTAC CERAM PROPOSITION

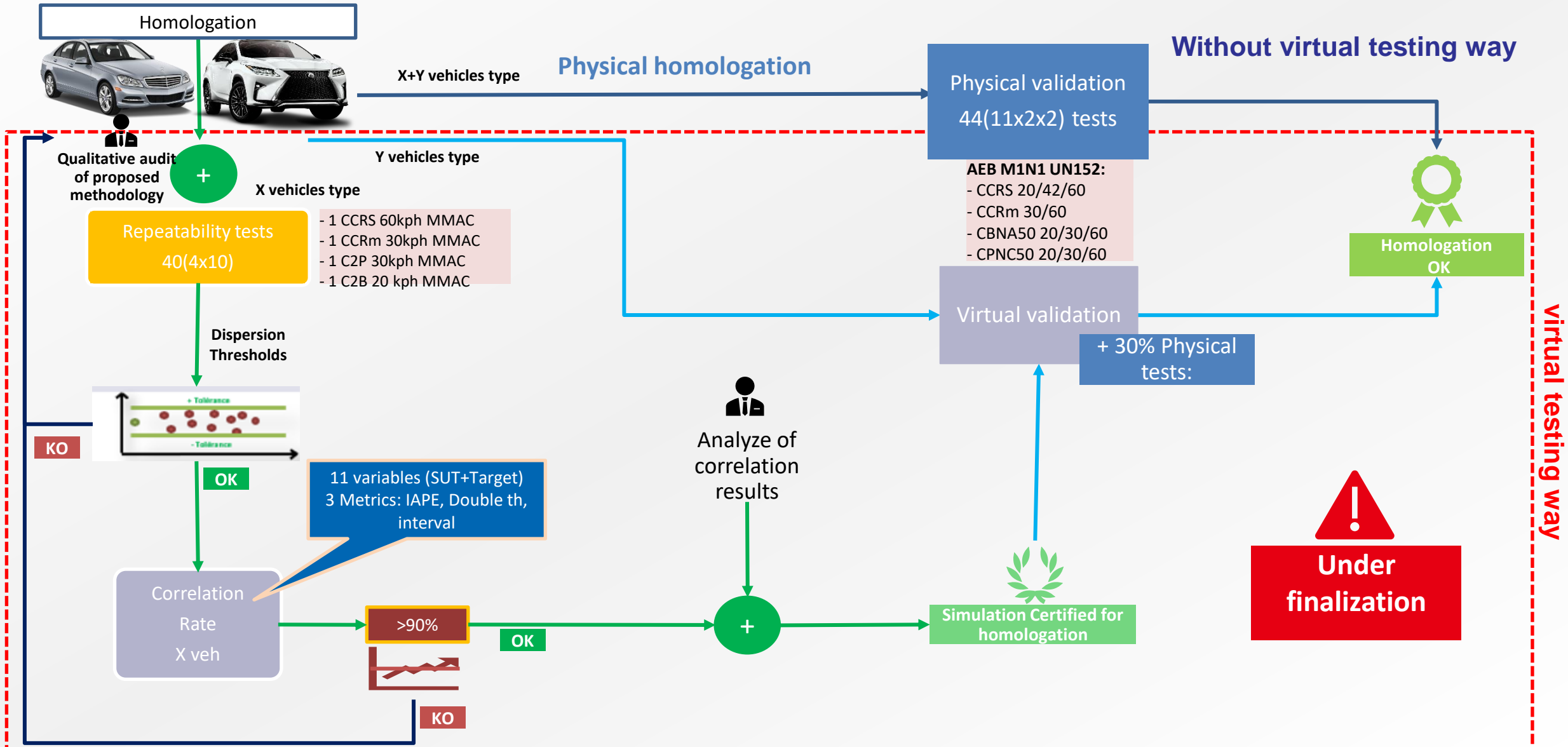
UC	Target	Test Case				R152 AEB M1N1 test	Repeatability test	Correlation test	Physical test not replaced by virtual
			Overlap	Speed	Weight config				
CtC	Car	CCRs	100%	20 kph	MMAC	✓ x2			Random physical test to validate vs virtual in the validity domain (30%)
					VODM	✓ x2			
				42 kph	MMAC	✓ x2			
					VODM	✓ x2			
				60 kph	MMAC	✓ x2	✓ x10	✓	
					VODM	✓ x2			
		CCRm	100%	30 kph	MMAC	✓ x2	✓ x10	✓	
					VODM	✓ x2			
				60 kph	MMAC	✓ x2			
					VODM	✓ x2			
VRU	Bicycle	CBNA	50%	20 kph	MMAC	✓ x2	✓ x10	✓	
					VODM	✓ x2			
				30 kph	MMAC	✓ x2			
					VODM	✓ x2			
				60 kph	MMAC	✓ x2			
					VODM	✓ x2			
	Pedestrian	CPNC	50%	20 kph	MMAC	✓ x2			
					VODM	✓ x2			
				30 kph	MMAC	✓ x2	✓ x10	✓	
					VODM	✓ x2			
				60 kph	MMAC	✓ x2			
					VODM	✓ x2			

# VIRTUAL TOOLCHAIN ASSESSMENT BEFORE VIRTUAL VEHICLE ASSESSMENT FOR TYPE APPROVAL

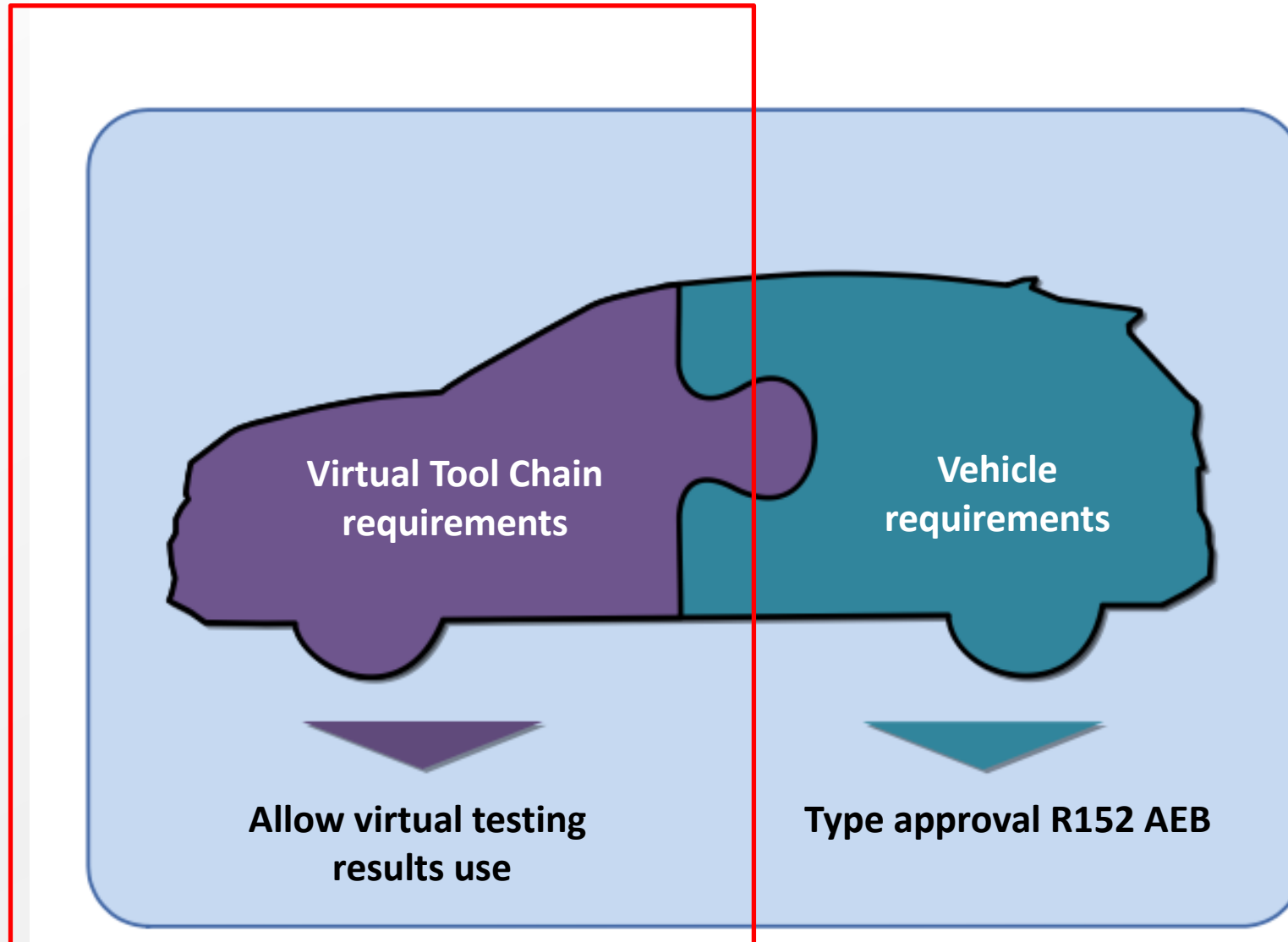


# METHOD OVERVIEW

## WE WILL ACHIEVE GREEN LINE



# VIRTUAL TOOLCHAIN ASSESSMENT BEFORE VIRTUAL VEHICLE ASSESSMENT FOR TYPE APPROVAL





## Vehicle 1 « City »

- Standard version

### Other version

- Convertible



## Vehicle 2 « Compact »

- Standard version

### Other version

- Convertible
- Station wagon
- 2 doors
- SUV



## Vehicle 3 « Executive »

- Standard version

### Other version

- Convertible
- Station wagon
- Off road station wagon

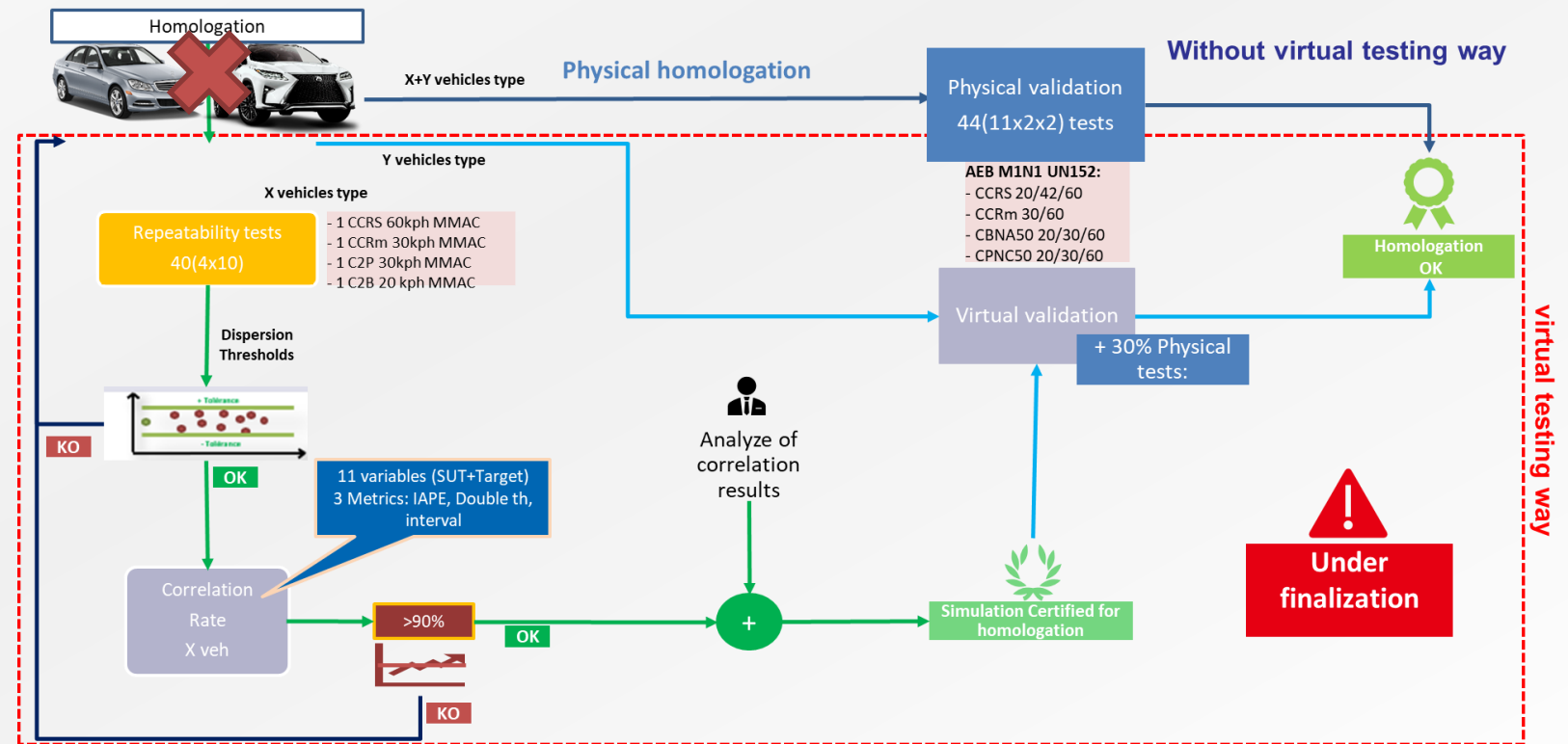
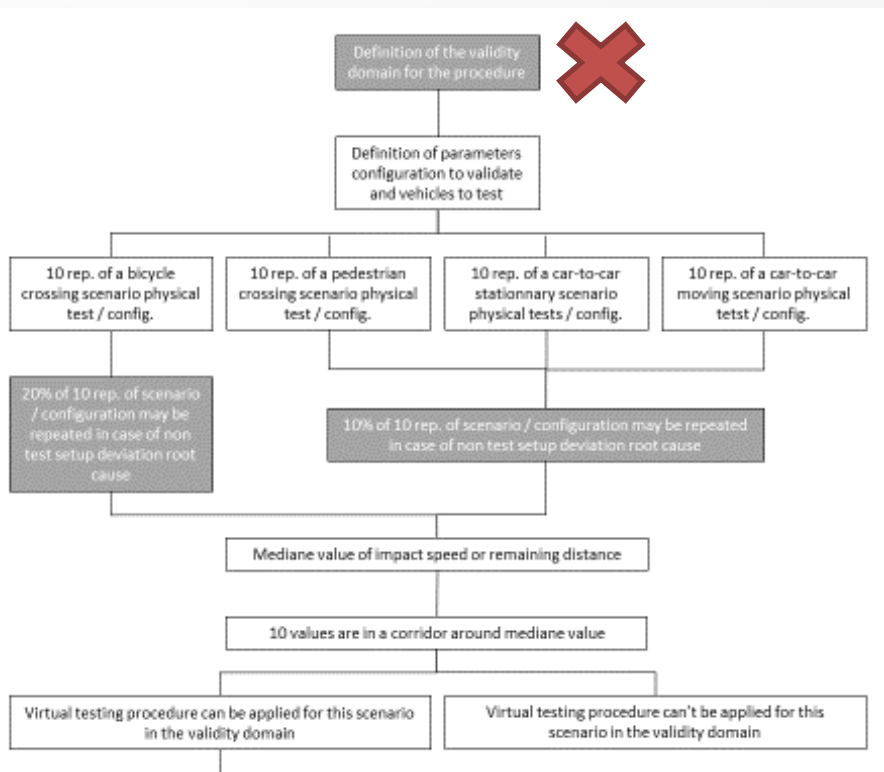


## Vehicle 4 « Van »

- Standard version

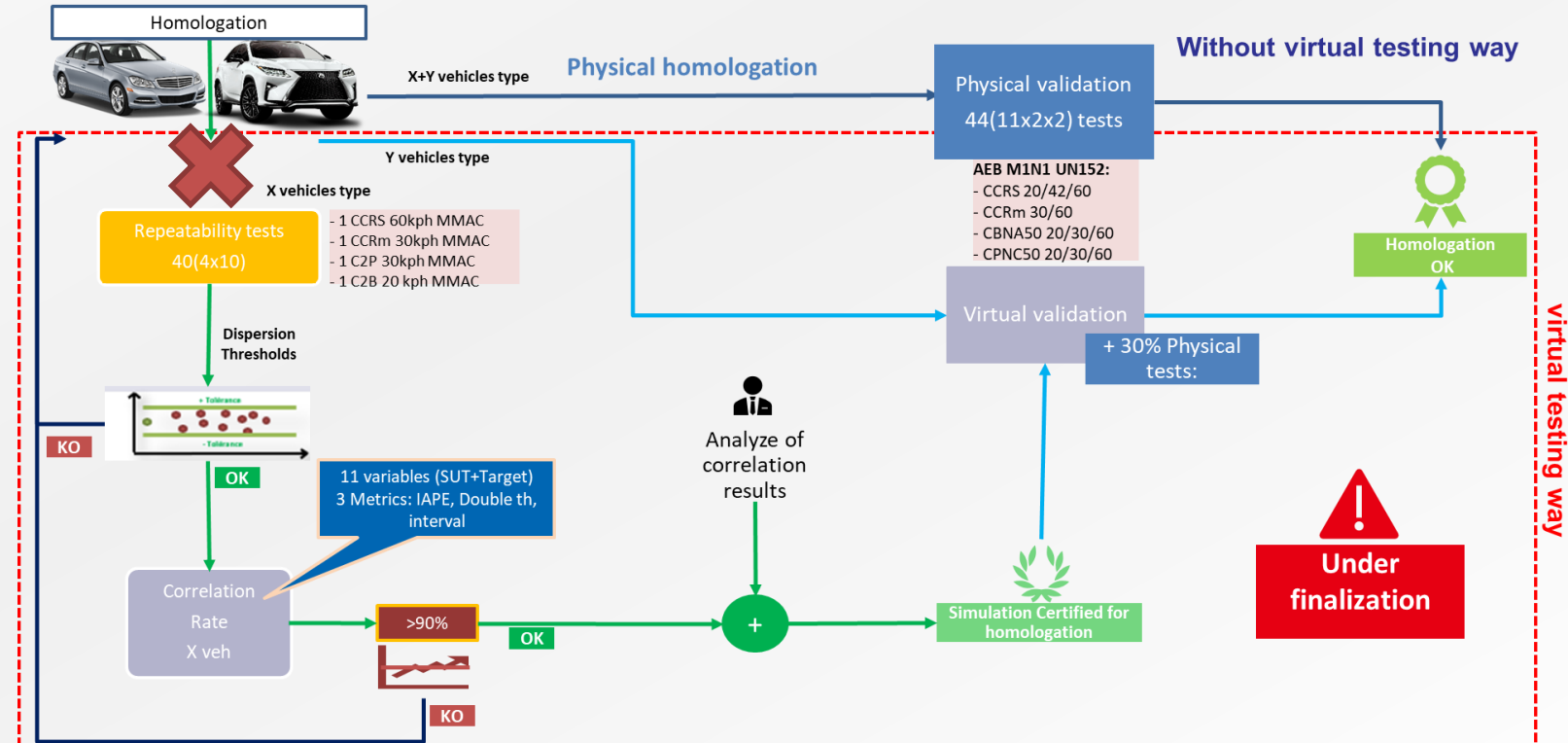
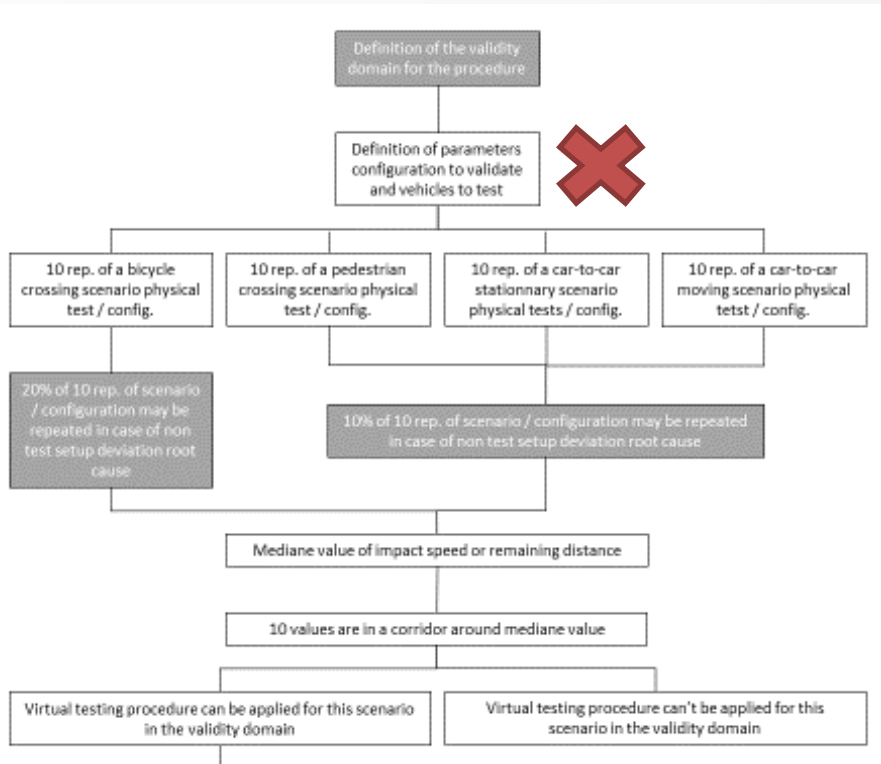
### Other version

- Long body

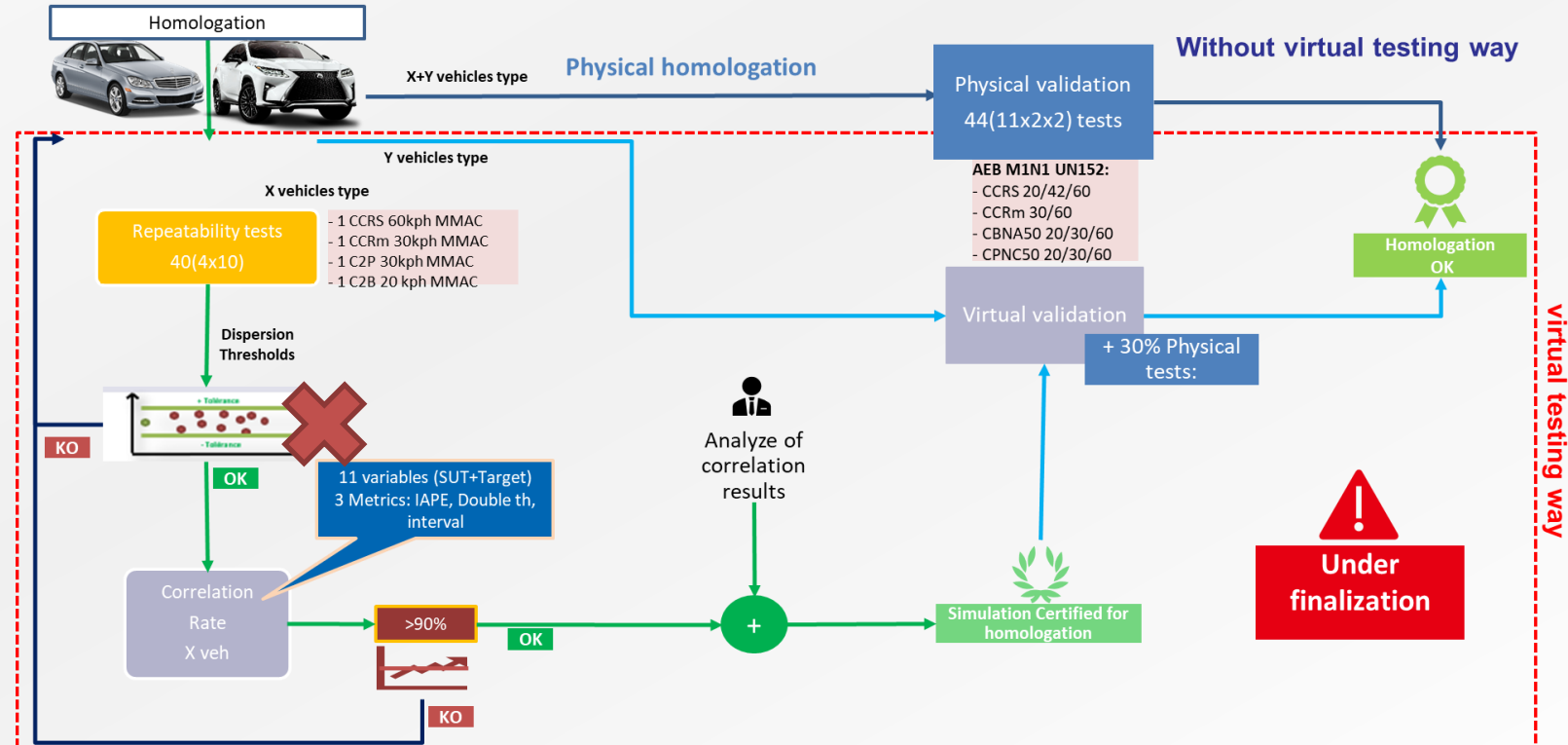
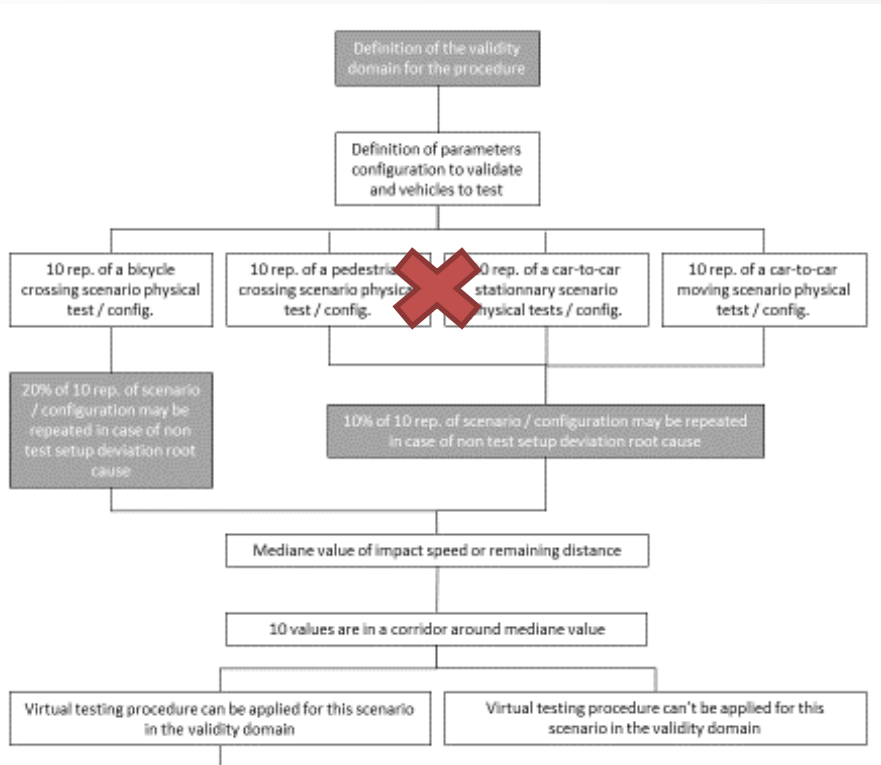










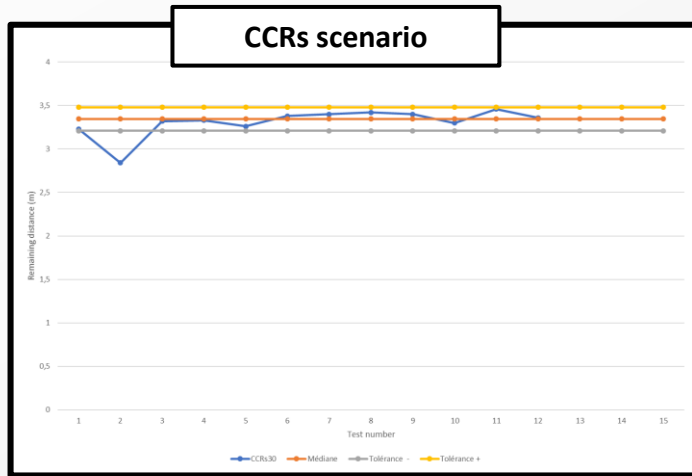


# REPEATABILITY PHYSICAL TESTS RESULTS (ONE VARIABLE USE FOR EXAMPLE)

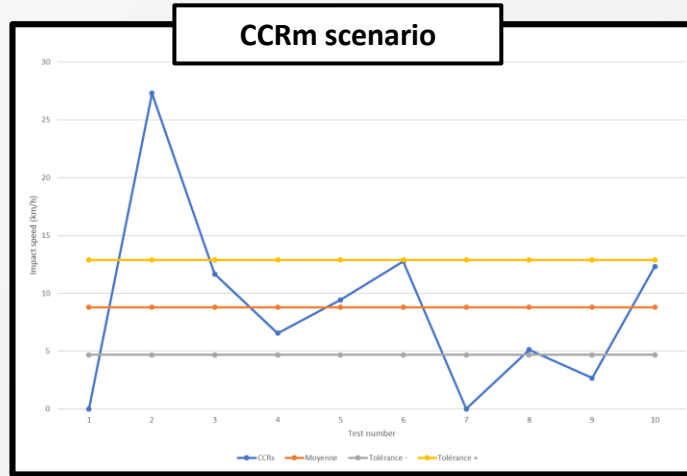
## ONLY VEHICLE 1 & 3 IN CCRS WILL CONTINUE THE METHOD

Vehicle 1

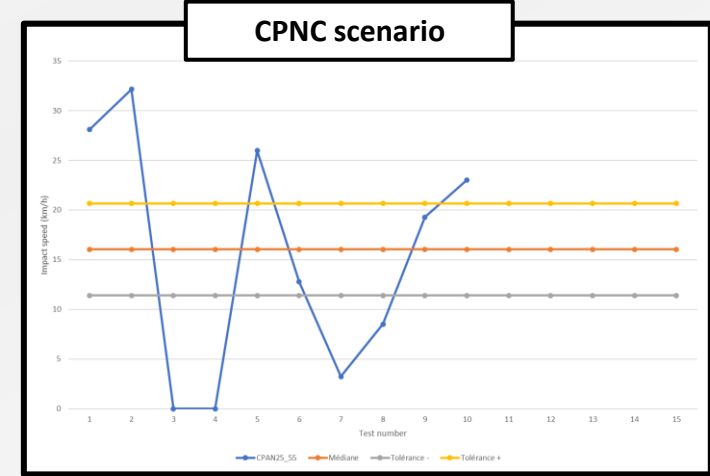
PASS



FAIL

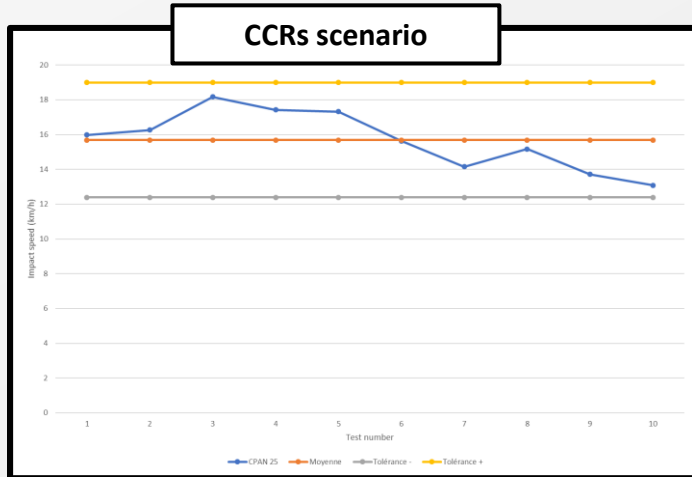


FAIL

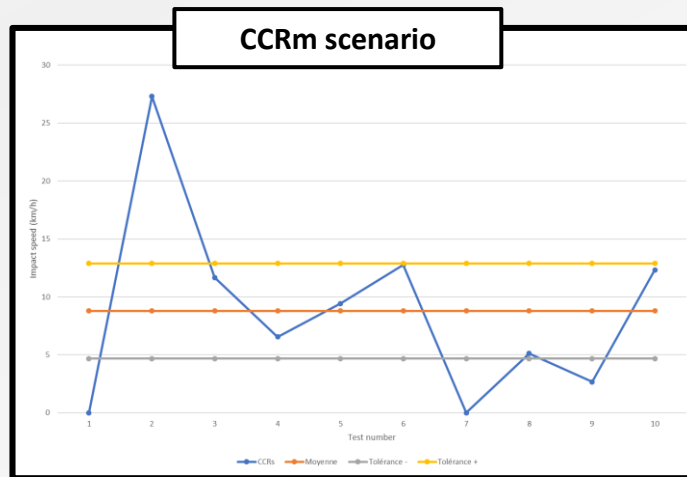


Vehicle 3

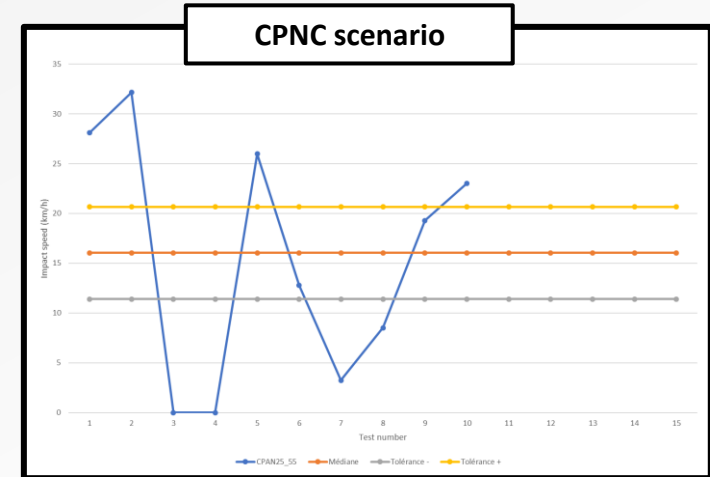
PASS

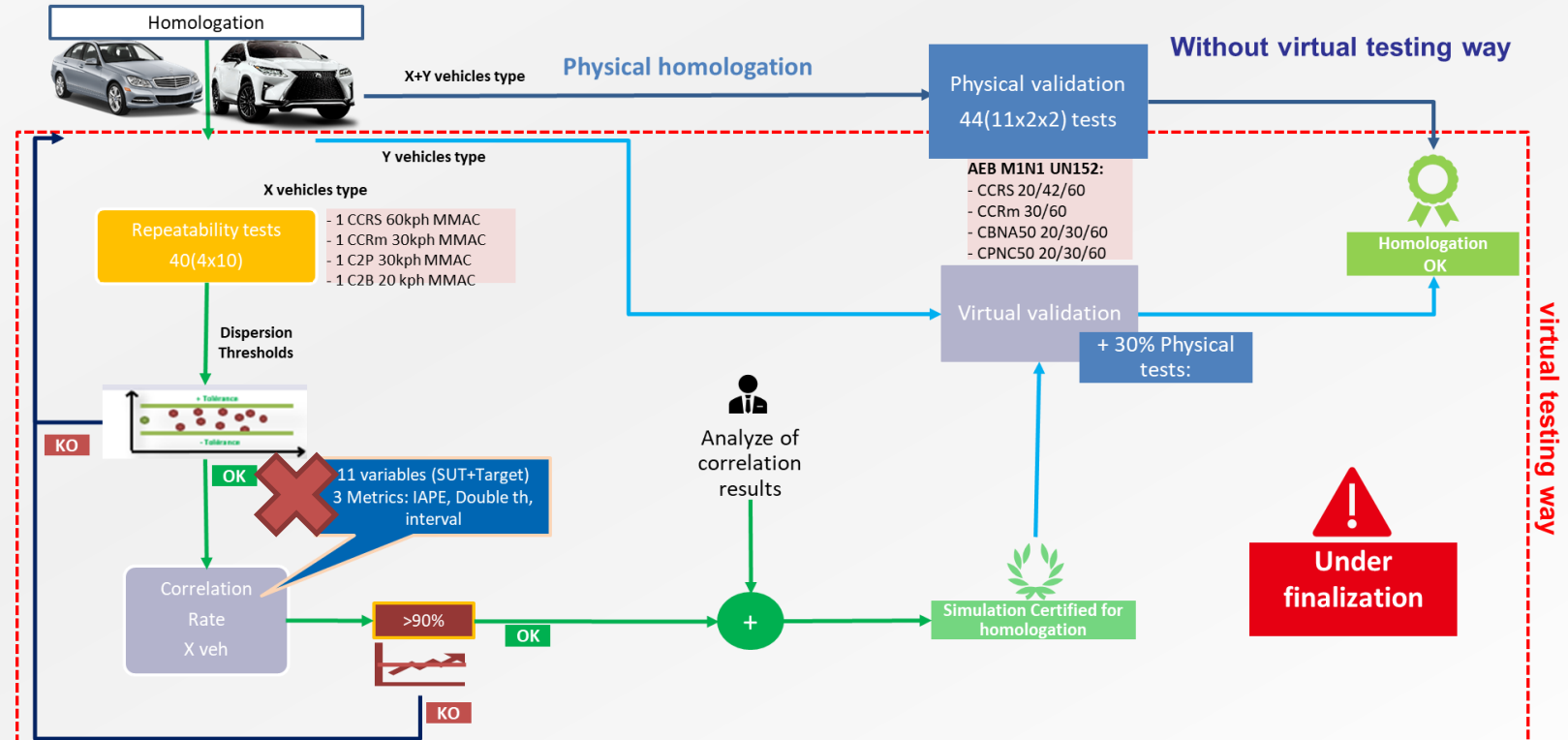
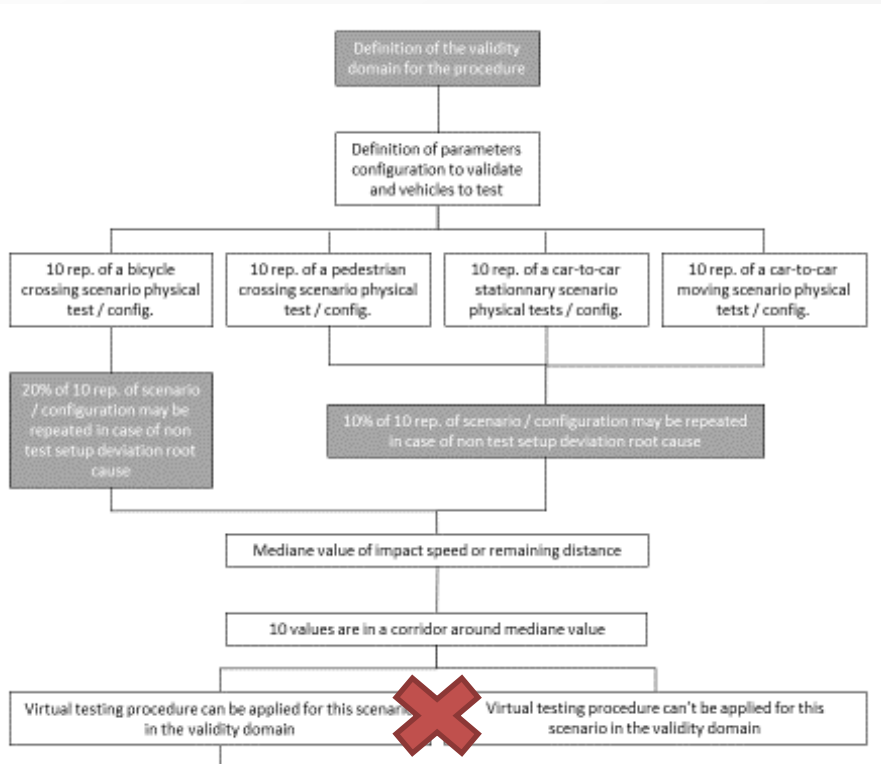


FAIL

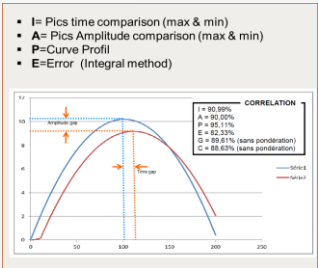
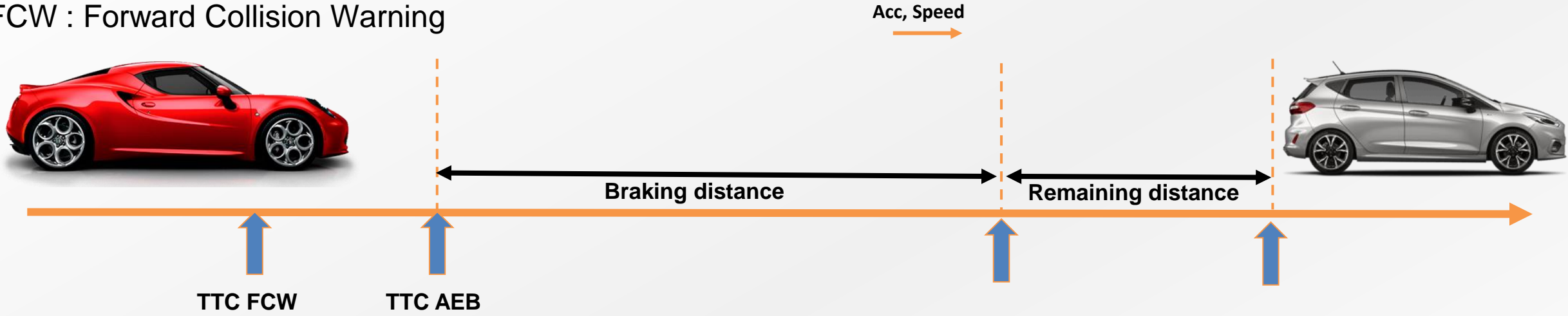


FAIL



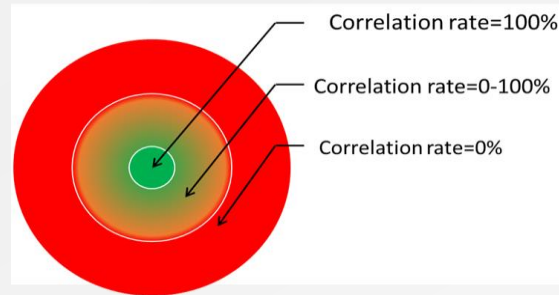


TTC : Time to collision  
 FCW : Forward Collision Warning



## IAPE Method

- Vehicle Speed
- Acceleration



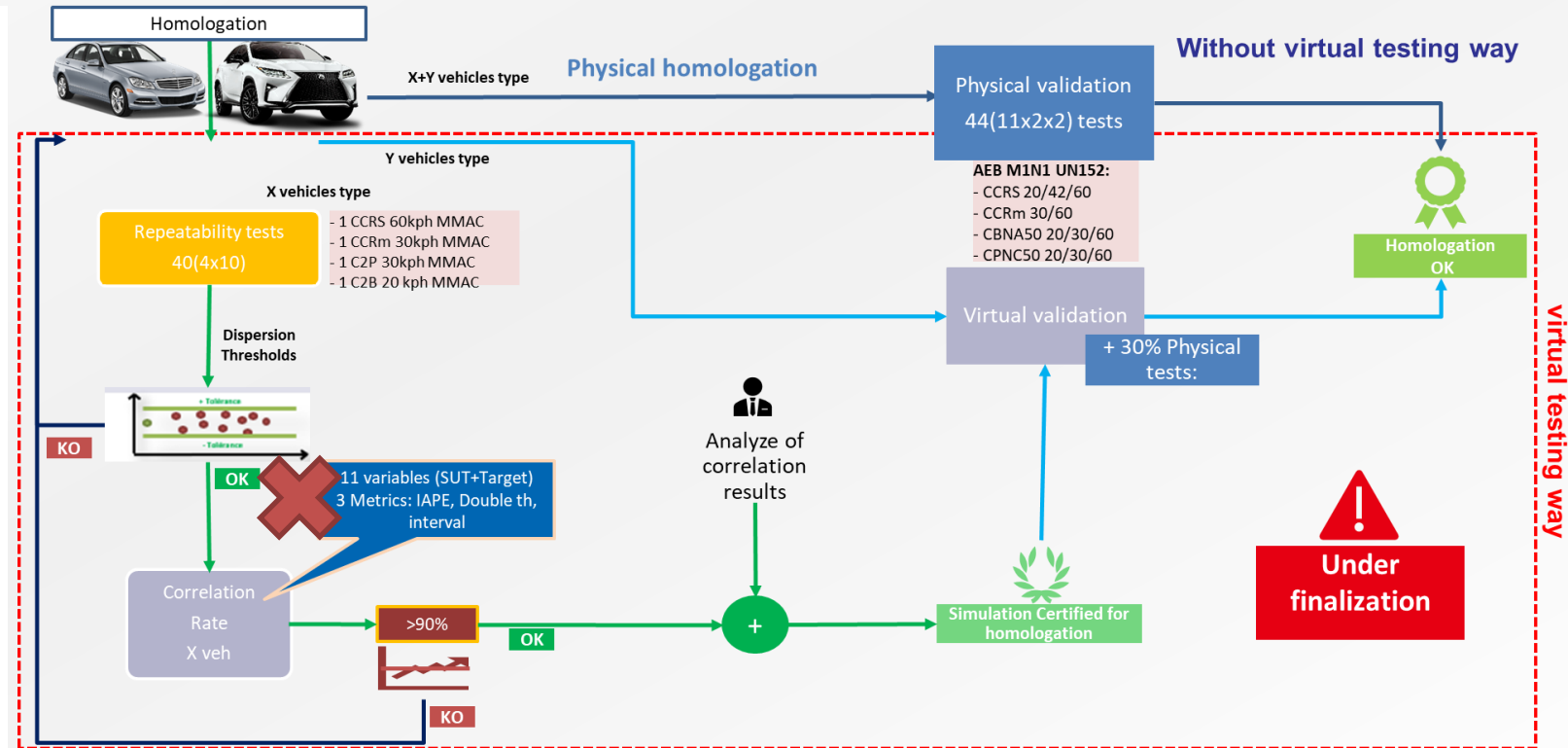
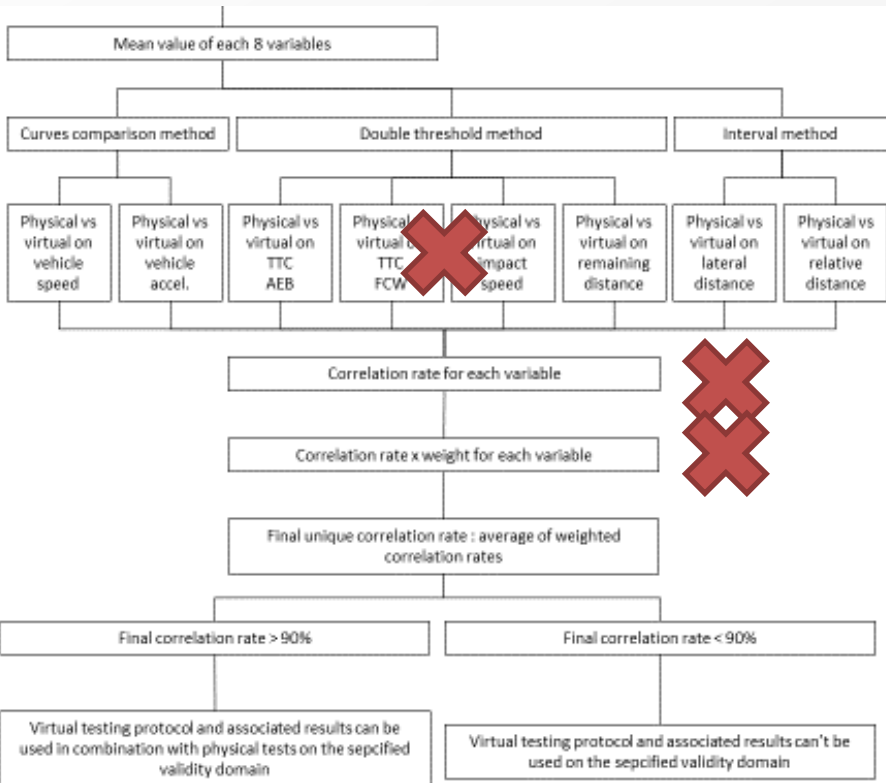
## Double thresholds method

- Remaining distance
- Impact Speed
- TTC AEB
- TTC FCW

If  $A < X < B \rightarrow 100\%$   
 Else  $\rightarrow 0\%$

## Interval Method

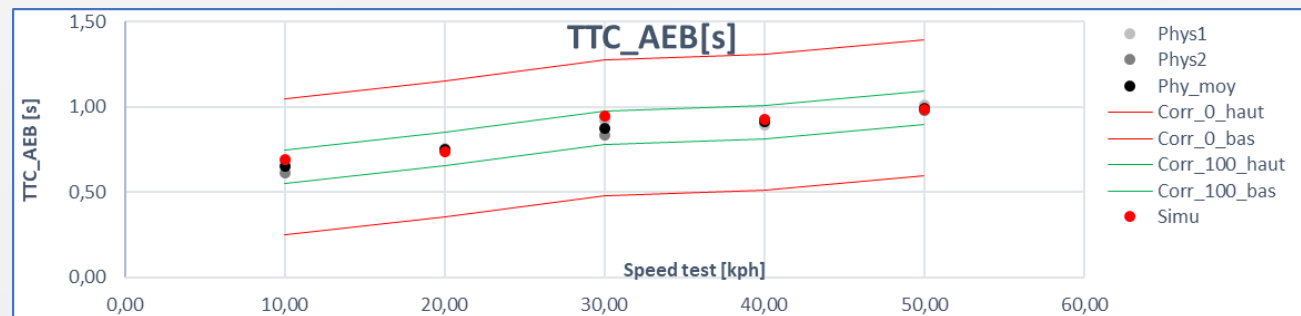
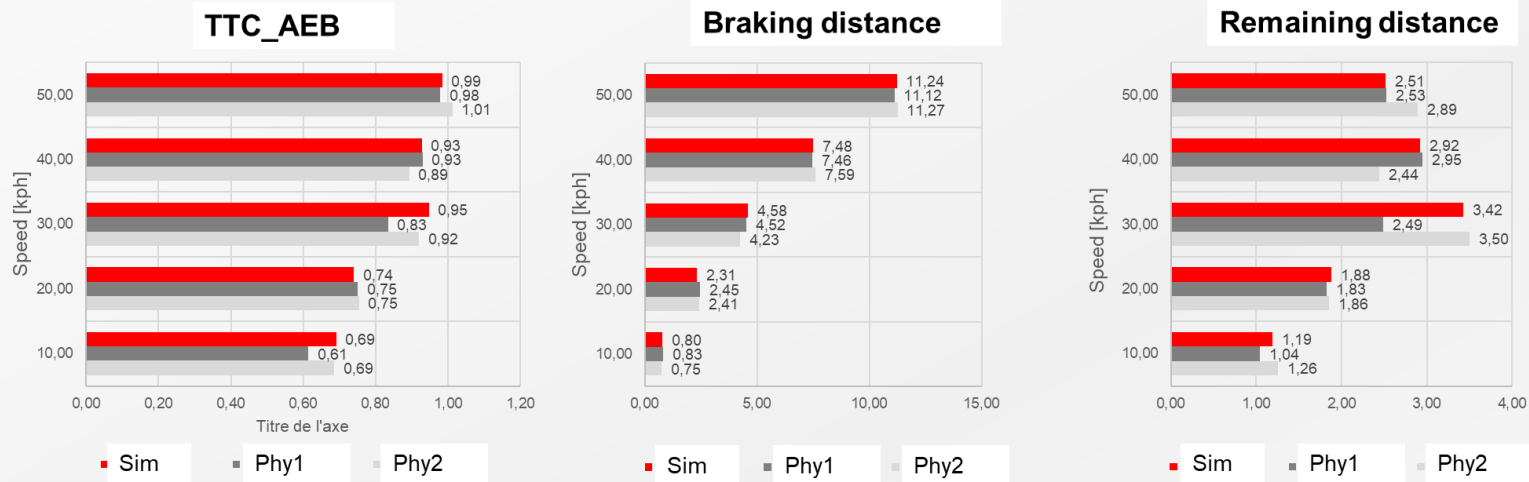
- Lateral distance
- Relative distance

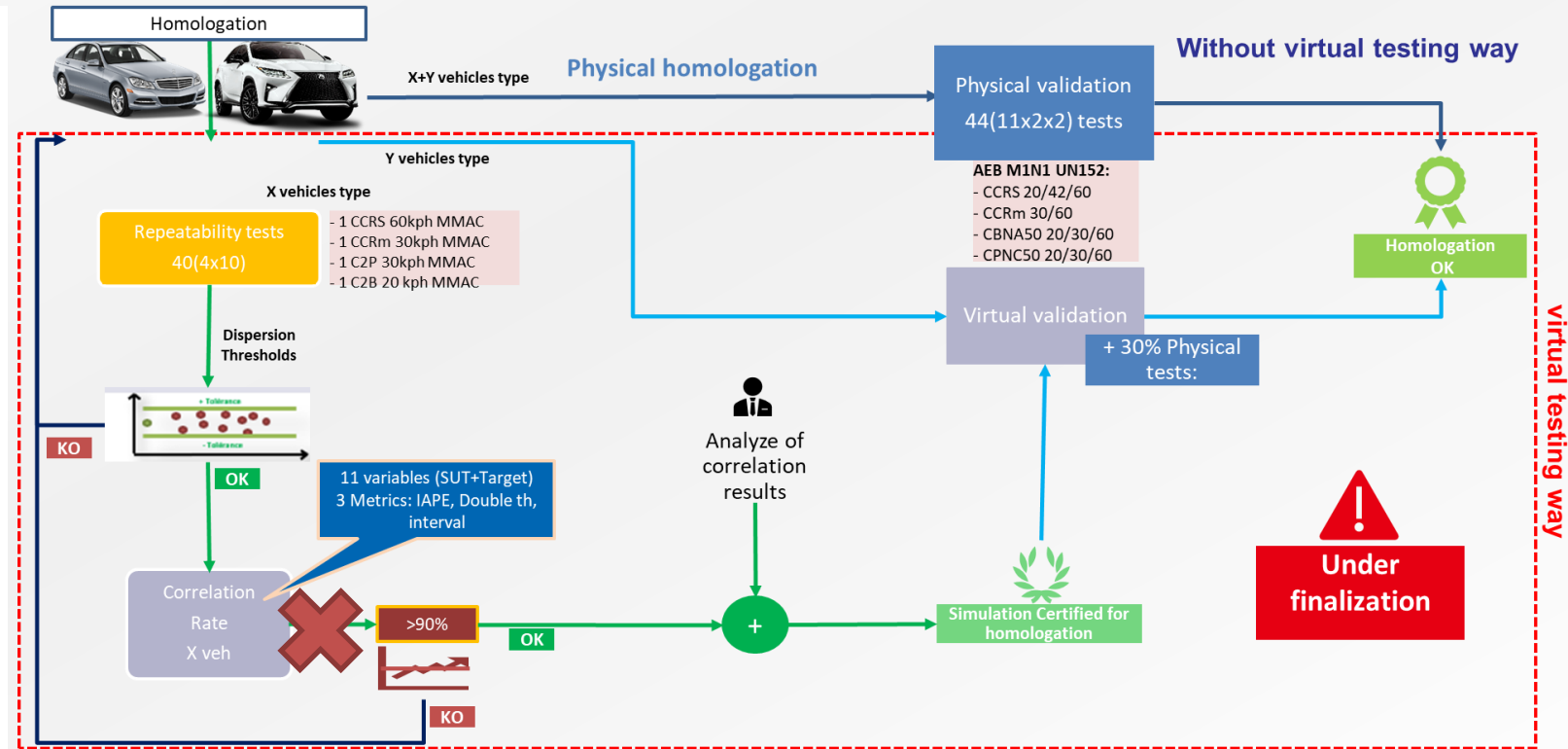
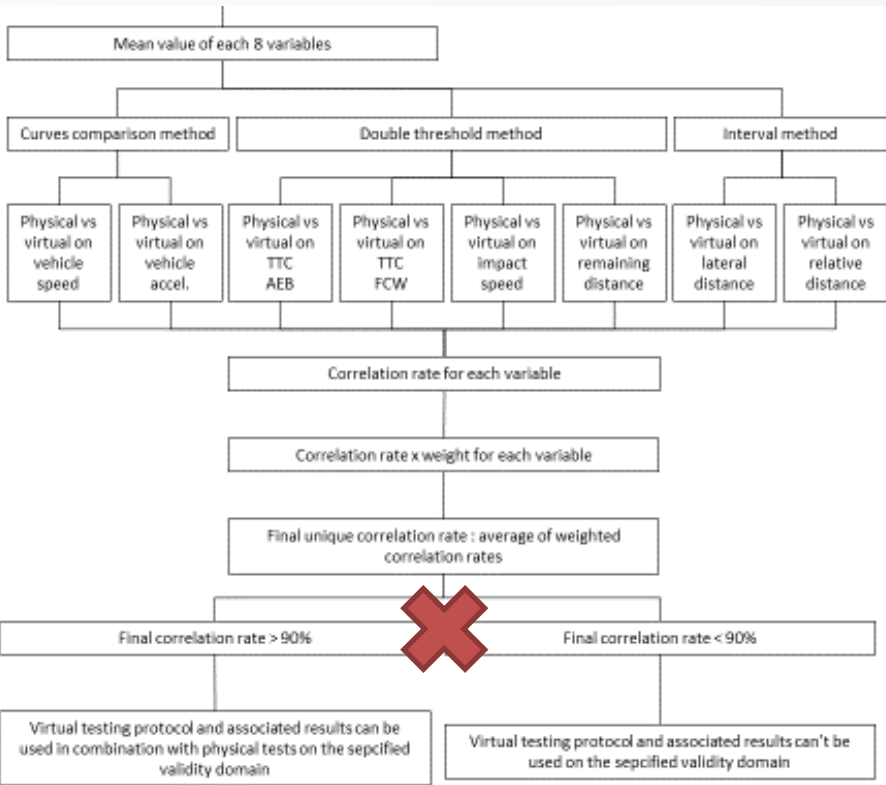






# DOUBLE THRESHOLD RESULTS FROM OEM GIVE RESULTS FOR ALL CONFIGURATIONS

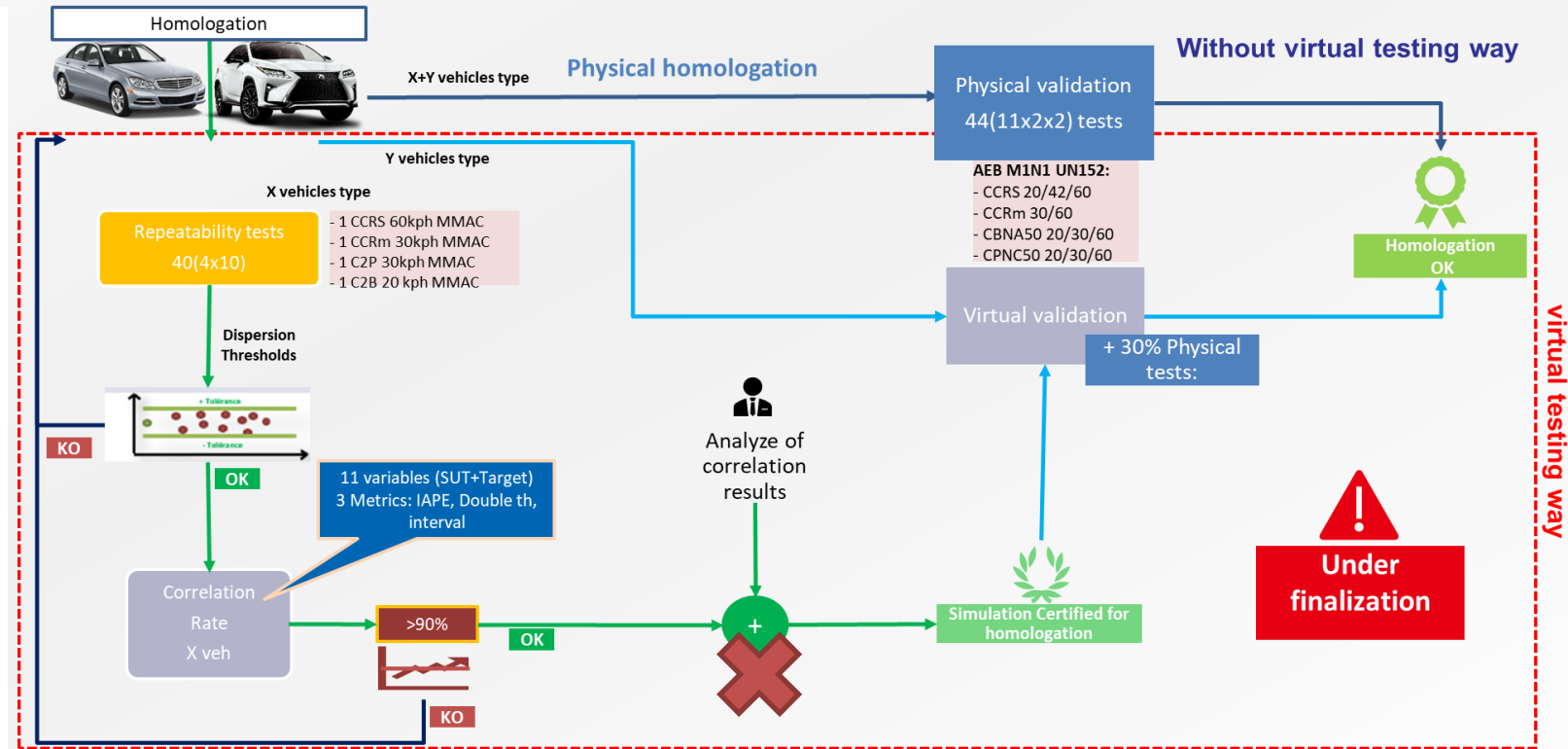
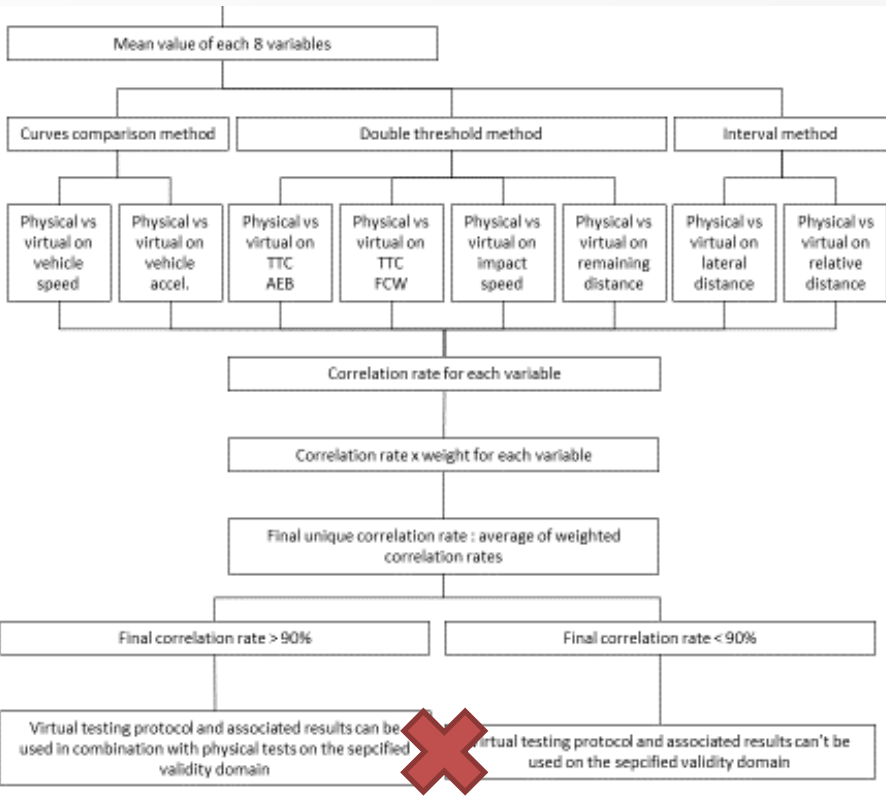




# FINAL CORRELATION RATE GIVE RESULTS FOR ALL CONFIGURATIONS

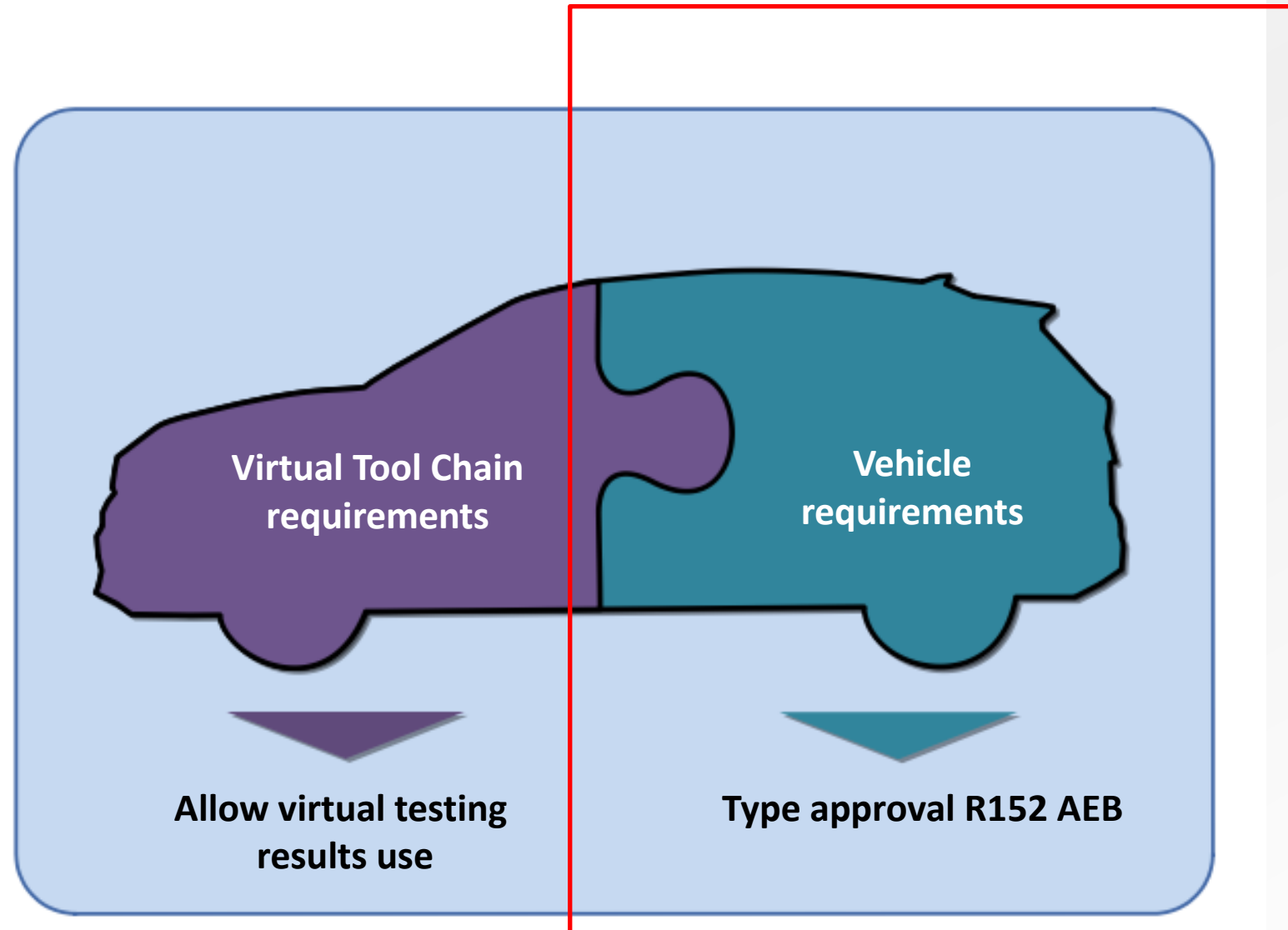
Variable	Method	Coeff	Correlation 10kph	Correlation 20kph	Correlation 30kph	Correlation 40kph	Correlation 50kph	
Speed (VUT)	IAPE	0,50	90,00	94,00	92,00	93,00	92,00	
Acceleration		1,00	93,00	93,00	94,00	96,00	93,00	
Lateral deviation	Interval	1,00	100,00	100,00	100,00	100,00	100,00	
Relative distance		1,00	NA	NA	NA	NA	NA	
TTC AEB	Double seuil	1,00	100,00	100,00	100,00	100,00	100,00	
TTC FCW		1,00	NA	NA	NA	NA	NA	
Impact speed		1,00	NA	NA	NA	NA	NA	
Remaining distance		1,00	63,97	79,97	0,00	0,00	0,30	<b>Global Correlation rate [%]</b>
	<b>Correlation rate</b>		<b>89</b>	<b>93</b>	<b>99</b>	<b>97</b>	<b>75</b>	<b>91</b>

➤ Vehicle 1 & 3 pass with CCRs scenario the method



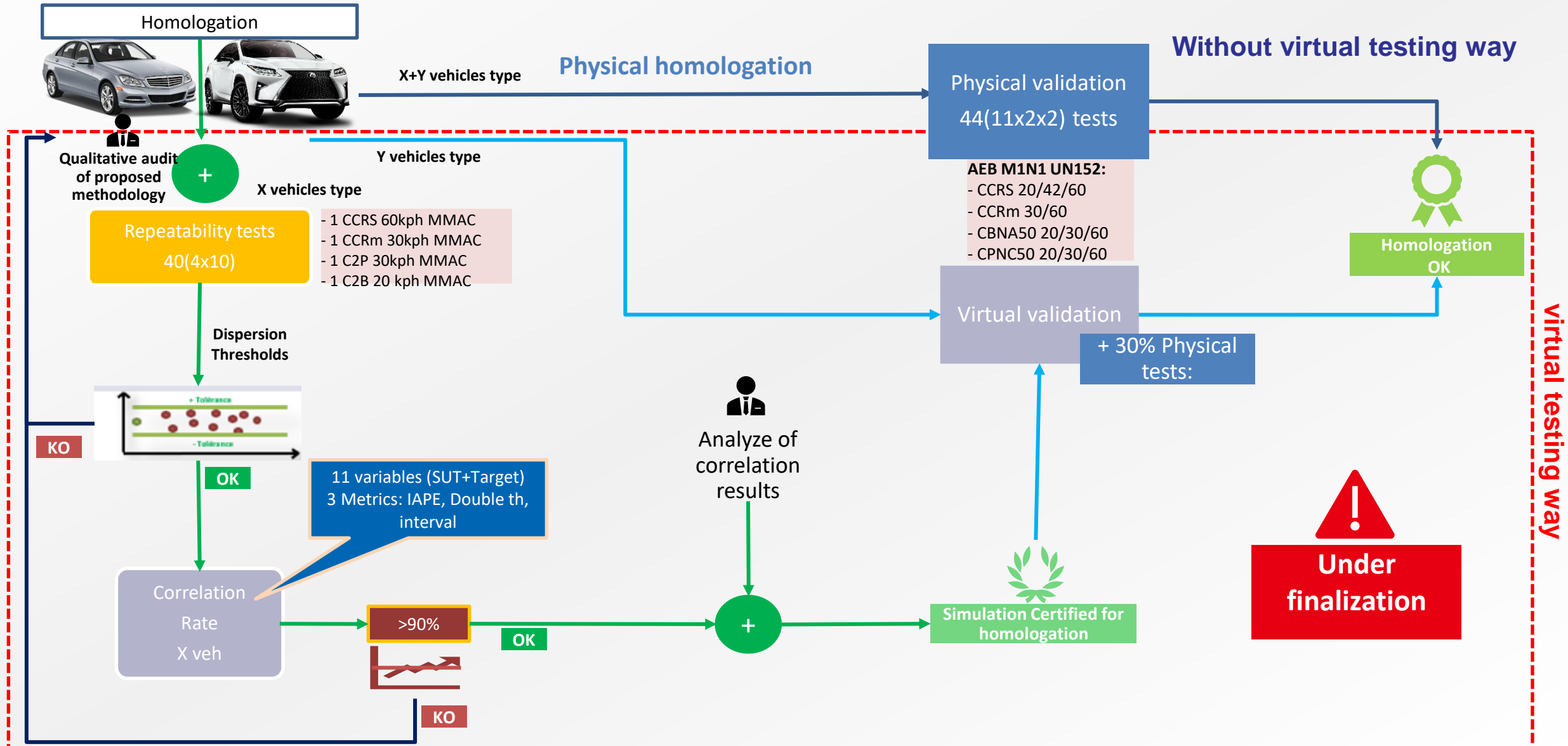


# VIRTUAL TOOLCHAIN ASSESSMENT BEFORE VIRTUAL VEHICLE ASSESSMENT FOR TYPE APPROVAL



# METHOD OVERVIEW

## WE WILL ACHIEVE DARK BLUE LINE



# REQUIRED PHYSICAL TESTING R152 (AEBS M1N1) RESULTS

## R152 AEB M1N1 TEST COLUMN



UC	Target	Test Case				R152 AEB M1N1 test	Repeatability test	Correlation test	Physical test not replaced by virtual
			Overlap	Speed	Weight config				
CtC	Car	CCRs	100%	20 kph	MMAC	✓ x2			Random physical test to validate vs virtual in the validity domain (30%)
					VODM	✓ x2			
				42 kph	MMAC	✓ x2			
					VODM	✓ x2			
				60 kph	MMAC	✓ x2	✓ x10	✓	
					VODM	✓ x2			
		CCRm	100%	30 kph	MMAC	✓ x2	✓ x10	✓	
					VODM	✓ x2			
				60 kph	MMAC	✓ x2			
					VODM	✓ x2			
VRU	Bicycle	CBNA	50%	20 kph	MMAC	✓ x2	✓ x10	✓	
					VODM	✓ x2			
				30 kph	MMAC	✓ x2			
					VODM	✓ x2			
				60 kph	MMAC	✓ x2			
					VODM	✓ x2			
	Pedestrian	CPNC	50%	20 kph	MMAC	✓ x2			
					VODM	✓ x2			
				30 kph	MMAC	✓ x2	✓ x10	✓	
					VODM	✓ x2			
				60 kph	MMAC	✓ x2			
					VODM	✓ x2			



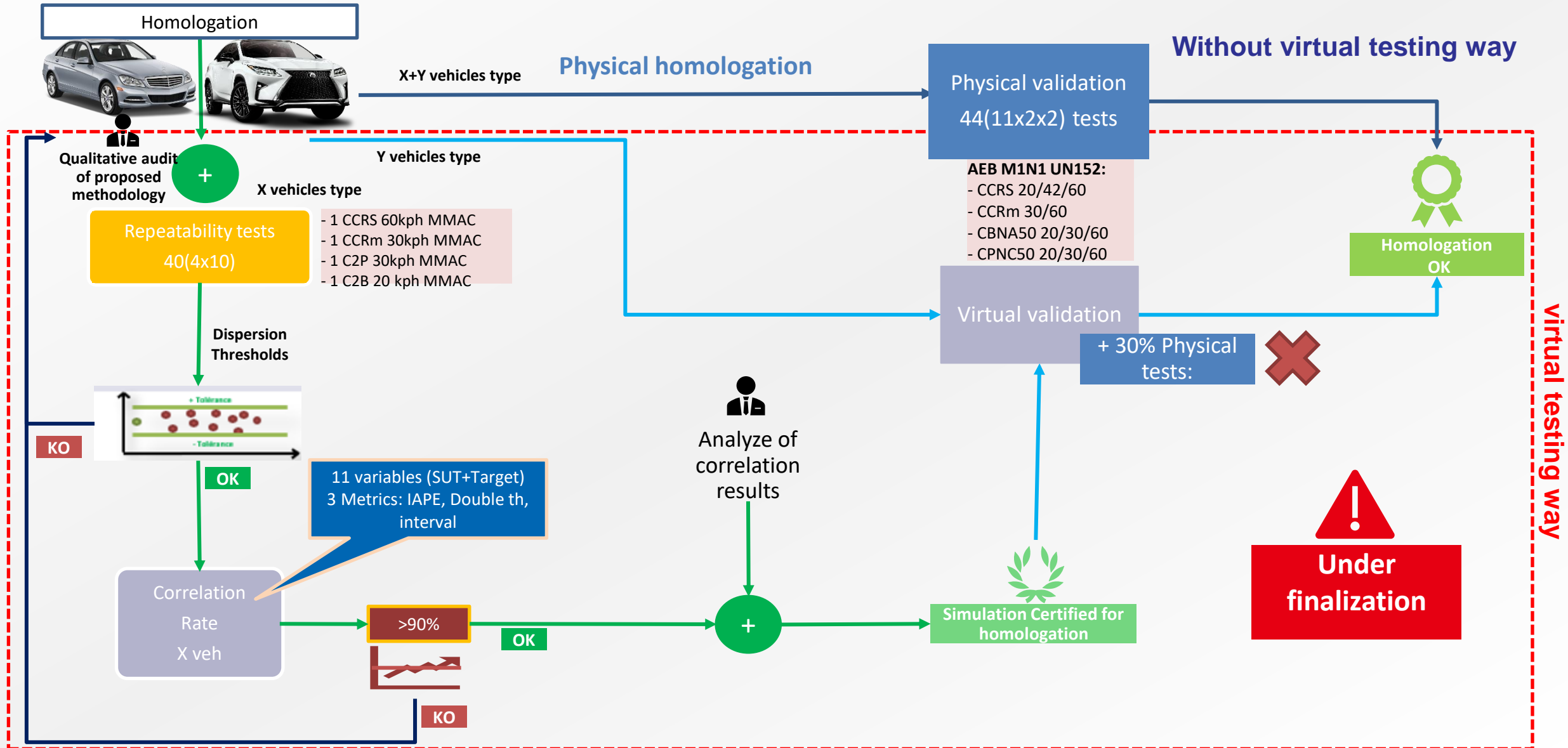
# OEM MUST SHOW PHYSICAL TEST RESULTS IN ORANGE RANGE

Vehicle	Version	Mass (kg) VODM	Mass (kg) MMAC	CCRs						CCRm				CBNA						CPNC					
				100%						100%				50%						50%					
				20		42		60		30		60		20		30		60		20		30		60	
				MMAC	VODM	MMAC	VODM	MMAC	VODM	MMAC	VODM	MMAC	VODM	MMAC	VODM	MMAC	VODM	MMAC	VODM	MMAC	VODM	MMAC	VODM	MMAC	VODM
Vehicle 1 "City"	Standard	1100	1600	Blue	Blue	Blue	Blue	Yellow	Yellow	Yellow	Yellow	Yellow	Yellow	Yellow	Yellow	Yellow	Yellow	Yellow	Yellow	Yellow	Yellow	Yellow			
	Convertible	1250	1750	Blue	Blue	Blue	Blue	Yellow	Yellow	Yellow	Yellow	Yellow	Yellow	Yellow	Yellow	Yellow	Yellow	Yellow	Yellow	Yellow	Yellow	Yellow			
Vehicle 2 "Compact"	Standard	1200	1800	Blue	Blue	Blue	Blue	Yellow	Yellow	Yellow	Yellow	Yellow	Yellow	Yellow	Yellow	Yellow	Yellow	Yellow	Yellow	Yellow	Yellow	Yellow			
	Convertible	1300	1900	Blue	Blue	Blue	Blue	Yellow	Yellow	Yellow	Yellow	Yellow	Yellow	Yellow	Yellow	Yellow	Yellow	Yellow	Yellow	Yellow	Yellow	Yellow			
	Station wagon	1500	2100	Blue	Blue	Blue	Blue	Yellow	Yellow	Yellow	Yellow	Yellow	Yellow	Yellow	Yellow	Yellow	Yellow	Yellow	Yellow	Yellow	Yellow	Yellow			
	Two doors	1150	1600	Blue	Blue	Blue	Blue	Yellow	Yellow	Yellow	Yellow	Yellow	Yellow	Yellow	Yellow	Yellow	Yellow	Yellow	Yellow	Yellow	Yellow	Yellow			
	SUV	1450	2200	Blue	Blue	Blue	Blue	Yellow	Yellow	Yellow	Yellow	Yellow	Yellow	Yellow	Yellow	Yellow	Yellow	Yellow	Yellow	Yellow	Yellow	Yellow			
Vehicle 3 "Executive"	Standard	1800	2400	Blue	Blue	Blue	Blue	Yellow	Yellow	Yellow	Yellow	Yellow	Yellow	Yellow	Yellow	Yellow	Yellow	Yellow	Yellow	Yellow	Yellow	Yellow			
	Convertible	1950	2200	Blue	Blue	Blue	Blue	Yellow	Yellow	Yellow	Yellow	Yellow	Yellow	Yellow	Yellow	Yellow	Yellow	Yellow	Yellow	Yellow	Yellow	Yellow			
	Station wagon	2100	2600	Yellow	Yellow	Yellow	Yellow	Yellow	Yellow	Yellow	Yellow	Yellow	Yellow	Yellow	Yellow	Yellow	Yellow	Yellow	Yellow	Yellow	Yellow	Yellow			
	OffRoad station wagon	2200	2600	Yellow	Yellow	Yellow	Yellow	Yellow	Yellow	Yellow	Yellow	Yellow	Yellow	Yellow	Yellow	Yellow	Yellow	Yellow	Yellow	Yellow	Yellow	Yellow			
Vehicle 4 "Van"	Standard	1600	3000	Yellow	Yellow	Yellow	Yellow	Yellow	Yellow	Yellow	Yellow	Yellow	Yellow	Yellow	Yellow	Yellow	Yellow	Yellow	Yellow	Yellow	Yellow	Yellow			
	Long body	1800	3500	Yellow	Yellow	Yellow	Yellow	Yellow	Yellow	Yellow	Yellow	Yellow	Yellow	Yellow	Yellow	Yellow	Yellow	Yellow	Yellow	Yellow	Yellow	Yellow			

➤ Tests in orange range will be assess according to R152 AEB M1N1 protocol criterion


# METHOD OVERVIEW

## WE WILL ACHIEVE LIGHT BLUE LINE



# REQUIRED PHYSICAL TESTING R152 (AEBS M1N1) RESULTS

## PHYSICAL TEST NOT REPLACED BY VIRTUAL COLUMN

UC	Target	Test Case				R152 AEB M1N1 test	Repeatability test	Correlation test	Physical test not replaced by virtual
			Overlap	Speed	Weight config				
CtC	Car	CCRs	100%	20 kph	MMAC	✓ x2			
					VODM	✓ x2			
				42 kph	MMAC	✓ x2			
					VODM	✓ x2			
				60 kph	MMAC	✓ x2	✓ x10	✓	
					VODM	✓ x2			
		CCRm	100%	30 kph	MMAC	✓ x2	✓ x10	✓	
					VODM	✓ x2			
				60 kph	MMAC	✓ x2			
					VODM	✓ x2			
VRU	Bicycle	CBNA	50%	20 kph	MMAC	✓ x2	✓ x10	✓	Random physical test to validate vs virtual in the validity domain (30%)
					VODM	✓ x2			
				30 kph	MMAC	✓ x2			
					VODM	✓ x2			
				60 kph	MMAC	✓ x2			
					VODM	✓ x2			
	Pedestrian	CPNC	50%	20 kph	MMAC	✓ x2			
					VODM	✓ x2			
				30 kph	MMAC	✓ x2	✓ x10	✓	
					VODM	✓ x2			
				60 kph	MMAC	✓ x2			
					VODM	✓ x2			



# LABORATORY WILL CHOOSE 30% OF TESTS WITHIN EXAMPLE

- Laboratory can choose 30 % of test to check virtually and physically within the range
  - 20 kmh to 50 km/h
  - Car to car stationary 100%
- 36 tests in the range: 30 % of 36 tests, we can choose 11 random test to check
  - They can be out of this table
- Laboratory have chosen, he will ask OEM to prove that vehicle 3 in following scenarios is accurate with simulation results:
  - CCRs convertible MMAC 25 km/h
  - CCRs convertible MMAC 30 km/h
  - CCRs convertible VODM 50 km/h
  - ....
  - ...

Vehicle	Version	Mass (kg) VODM	Mass (kg) MMAC	CCRs			CCRm			CBNA			CPNC			
				100%			100%			50%			50%			
				20	42	60	30	60	20	30	60	20	30	60		
				MMAC	VODM	MMAC	VODM	MMAC	VODM	MMAC	VODM	MMAC	VODM	MMAC	VODM	
Vehicle 1 "City"	Standard	1100	1600													
	Convertible	1250	1750													
Vehicle 2 "Compact"	Standard	1200	1800													
	Convertible	1300	1900													
	Station wagon	1500	2100													
Vehicle 3 "Executive"	Two doors	1150	1600													
	SUV	1450	2200													
	Standard	1800	2400													
Vehicle 3 "Executive"	Convertible	1950	2200													
	Station wagon	2100	2600													
	OffRoad station wagon	2200	2600													
Vehicle 4 "Van"	Standard	1600	3000													
	Long body	1800	3500													

➤ Tests in blue range will be assess according to R152 AEB M1N1 protocol criterion

