

Definitions

2.6.1.4 Class a xxx: Non-standard coupling ball with a diameter “xxx”, always greater than 80 mm

2.6.2.5 Claas b xxx: Non-Standard coupling head with a diameter “xxx”, always greater than 80 mm

Annex 5

6 Towing brackets

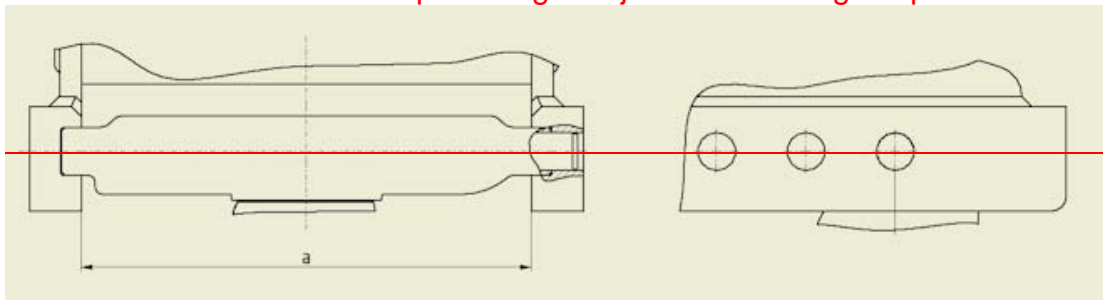
6.1. Towing brackets of Class f shall satisfy the tests given in paragraph 3.6 of annex 6.

6.2. Towing brackets shall generally be installed on the vehicle's ~~rear axle or transmission structure~~ and are used to mount coupling devices of Classes a, c, g, h, q or s and any other mounted devices. Other mounted devices may include forced steering components, shank or cylinder bearings, etc. which transmit additional forces to the towing bracket.

6.3 Towing brackets can be designed as quick height-adjustable (qha), pin height-adjustable (pha) bracket or as frame without height adjustment.

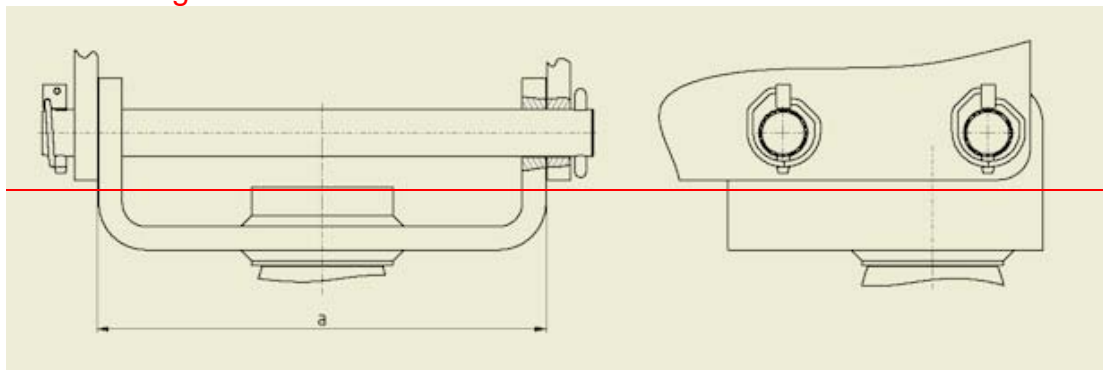
~~If the vehicle is equipped with a rear PTO shaft, the design must be in accordance to ISO 500 (see dim "a" on following figures)~~

~~6.3.1 Quick height adjustable towing bracket of Class f-1 for mounting couplings of Class a80-2 and c40-2 with quick height adjustable latching rail plate.~~



~~Figure 25 — example for qha towing bracket~~

6.3.2 Other towing brackets



~~Figure 26 — example for pin height adjustable towing bracket with pin adjustable plate~~

~~Figure ?? — example for not height adjustable towing bracket (needed ???)~~