



JAMA basic figure:
75% coverage criterion on-road test videos

- as material to discuss the question from Japan at IWG FVA #17 -

FVA EG2 | 25th March 2024 | Marco Danneberg

Video from on-road feature test:
navigation advance notice

Type: Roundabout

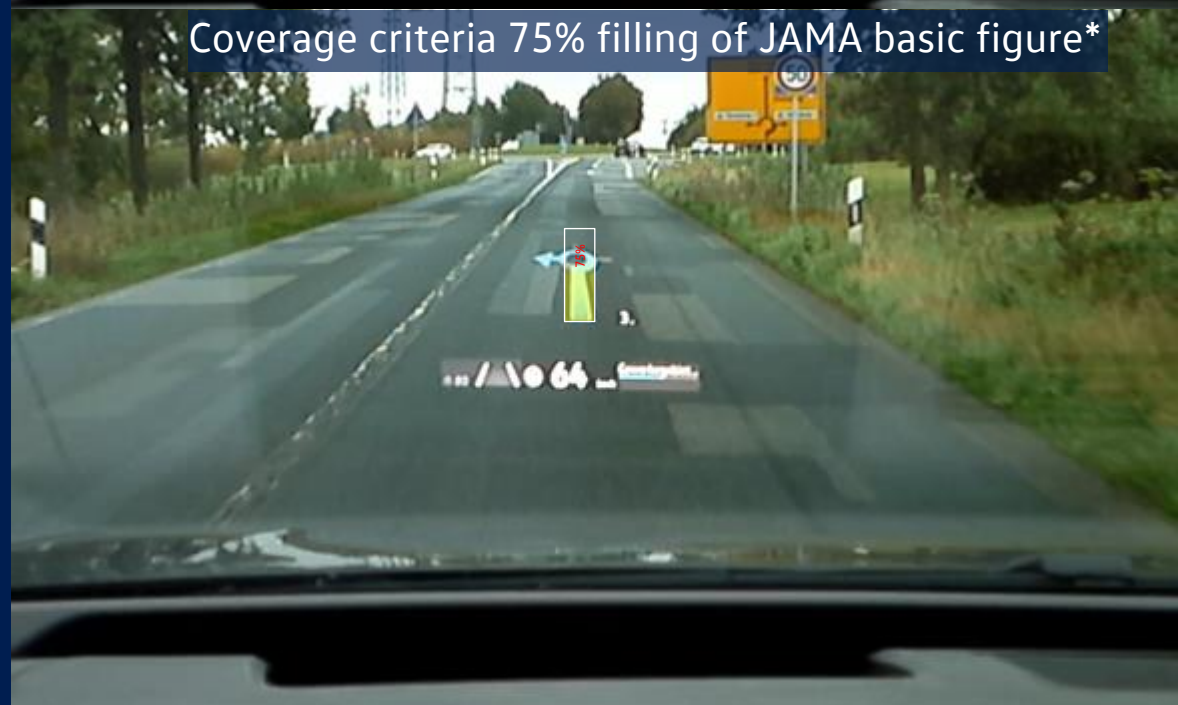
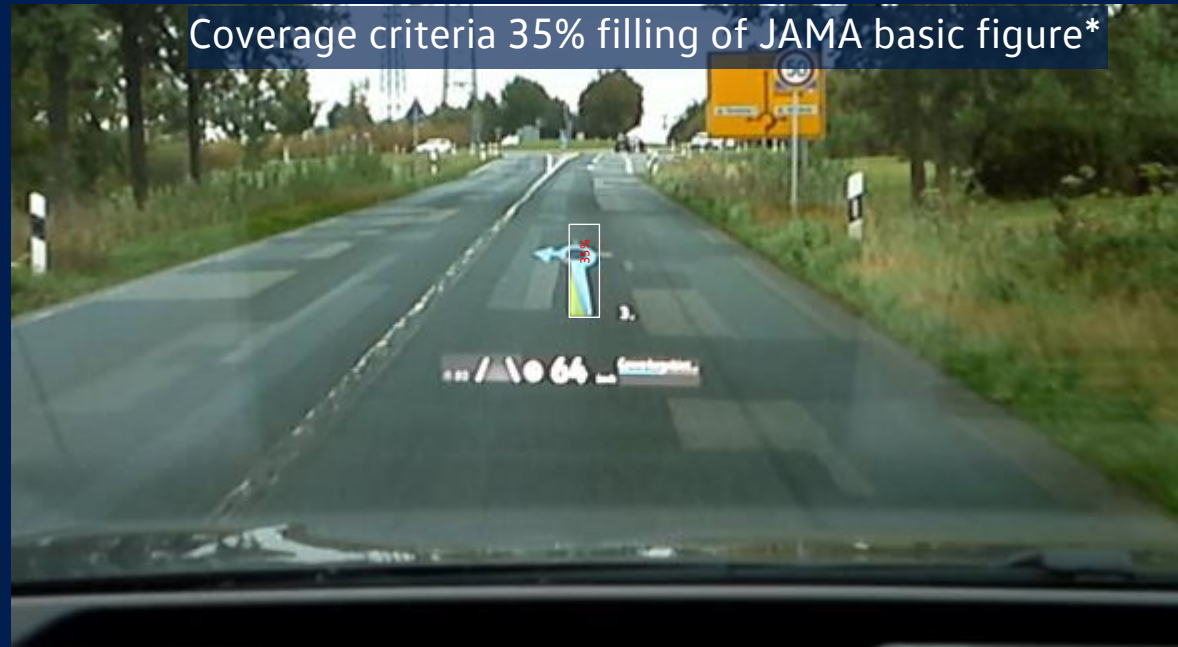


Comparison of navigation advance notice size vs. 35% and 75% of JAMA basic figure filling

✘ 35% filling doesn't allow this visualization of navigation content

✔ 75% filling allow this visualization of navigation content

* JAMA basic figure digitally added

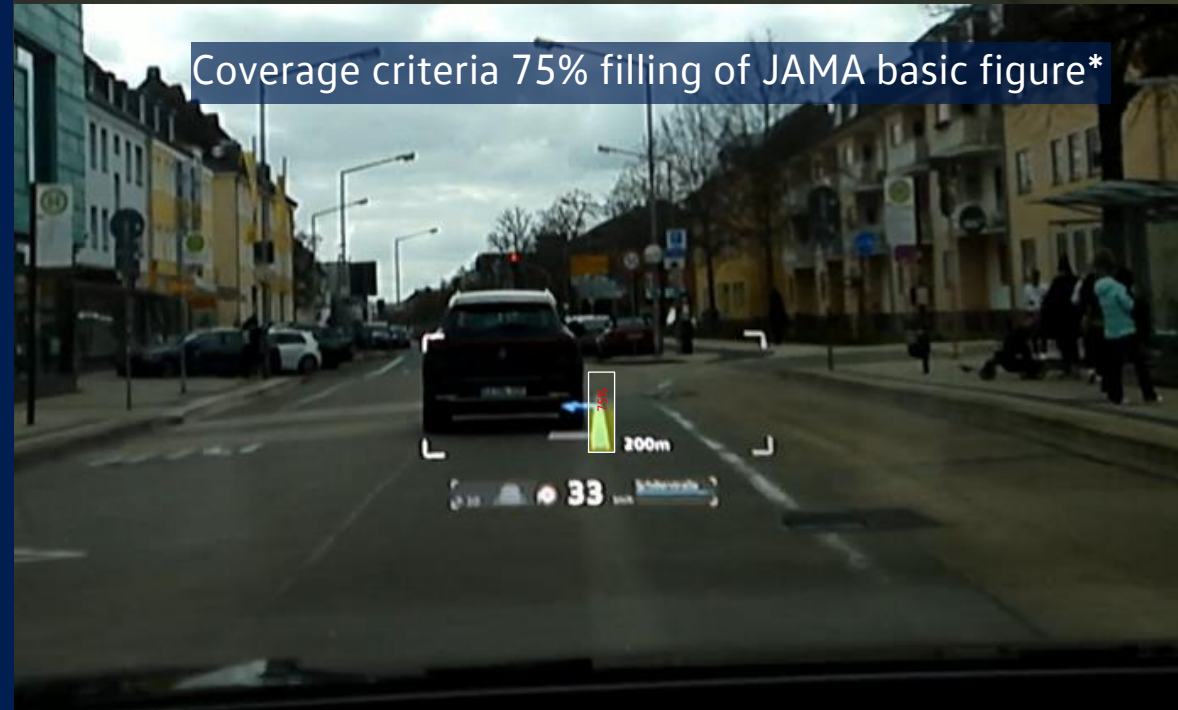
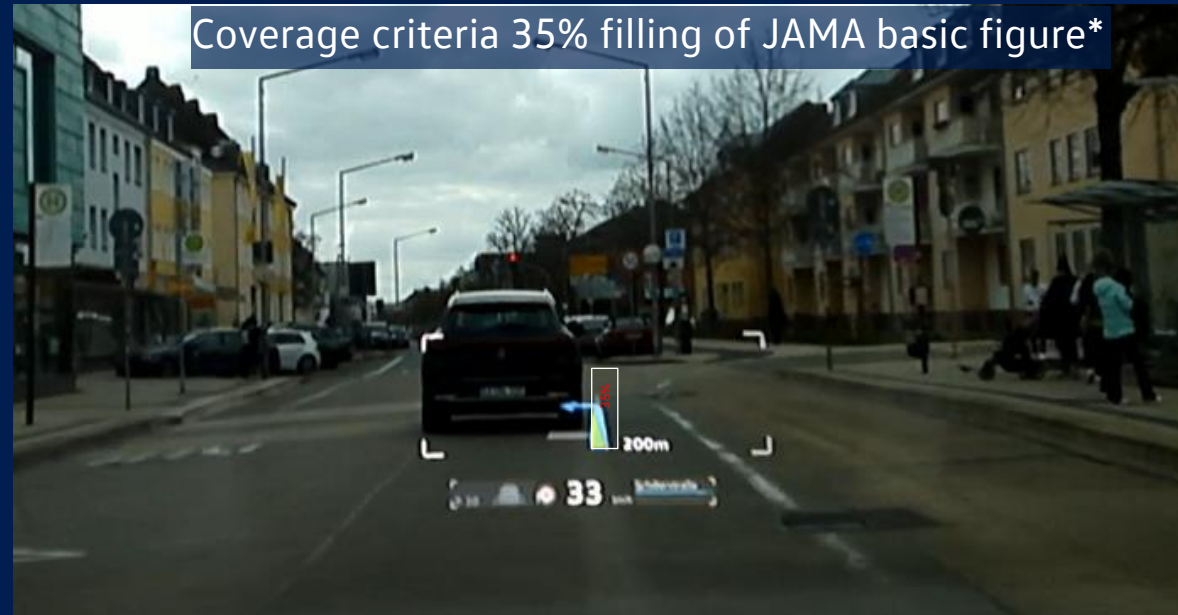


Comparison of navigation advance notice size vs. 35% and 75% of JAMA basic figure filling

✘ 35% filling doesn't allow this visualization of navigation content

✔ 75% filling allow this visualization of navigation content

* JAMA basic figure digitally added



Video from on-road feature test:
navigation (day conditions)

Type: Signpost



Video from on-road feature test:
navigation (sunset conditions)

Type: Signpost



Video from on-road feature test:
navigation

Type: Recommended Lane Change

