

REVISED as of 4 Oct.2022

ATTENTION!!

COVID-19:

**Latest Japanese Border Measures
(to be applied from 11 October 2022)**

The Measures might change without notice. Please check the latest information at Embassy/Consulate-General of Japan in your country.

COVID-19: Latest Japanese Border Measures

(applied from 11 October 2022)

- ✓ **The visa exemption measures** (which have been temporarily suspended since December 2020) **will be resumed**. Please see the list of countries and regions subject for the exemption below.
https://www.mofa.go.jp/j_info/visit/visa/short/novisa.html
- ✓ **You have to present a valid 3rd time vaccination certificate(**).**
- ✓ **In case you do not have valid 3rd time vaccination certificate, you must present a Negative PCR Test Result Certificate of inspection within 72 hours before leaving the country of departure.**

****COVID-19 Vaccination Certificates Valid for Entry into Japan from Abroad:**
https://www.mofa.go.jp/ca/fna/page24e_000317.html

Please see https://www.mofa.go.jp/ca/fna/page4e_001053.html for your reference.

COVID-19 Negative PCR Test Result Certificate

(only for those who do not have valid 3rd time vaccination certificate)

In case you do not have valid 3rd time vaccination certificate, **you must present a negative PCR Test Result Certificate of inspection within 72 hours before leaving the country of departure.** If you are unable to present a valid certificate of inspection, you will not be allowed to enter in Japan based on the Quarantine Law.

Conditions

A certificate is **valid as long as all of the following items are satisfied.**

- (1)Name
- (2)Date of birth
- (3)Testing method for COVID-19
- (4)Sample
- (5)Specimen collection date and time
- (6)Result
- (7)Name of medical institution
- (8)Date of issue

Please see https://www.mhlw.go.jp/stf/covid-19/border_test.html for your reference.

Recommendation for Fast Track

Pre-register for airport quarantine procedures!

Fast Track is a way to handle some quarantine procedures before you enter Japan from overseas, using MySOS Web online or the MySOS app on a smartphone.

To reduce the time for your immigration clearance at arrival, Fast Track is highly recommended.

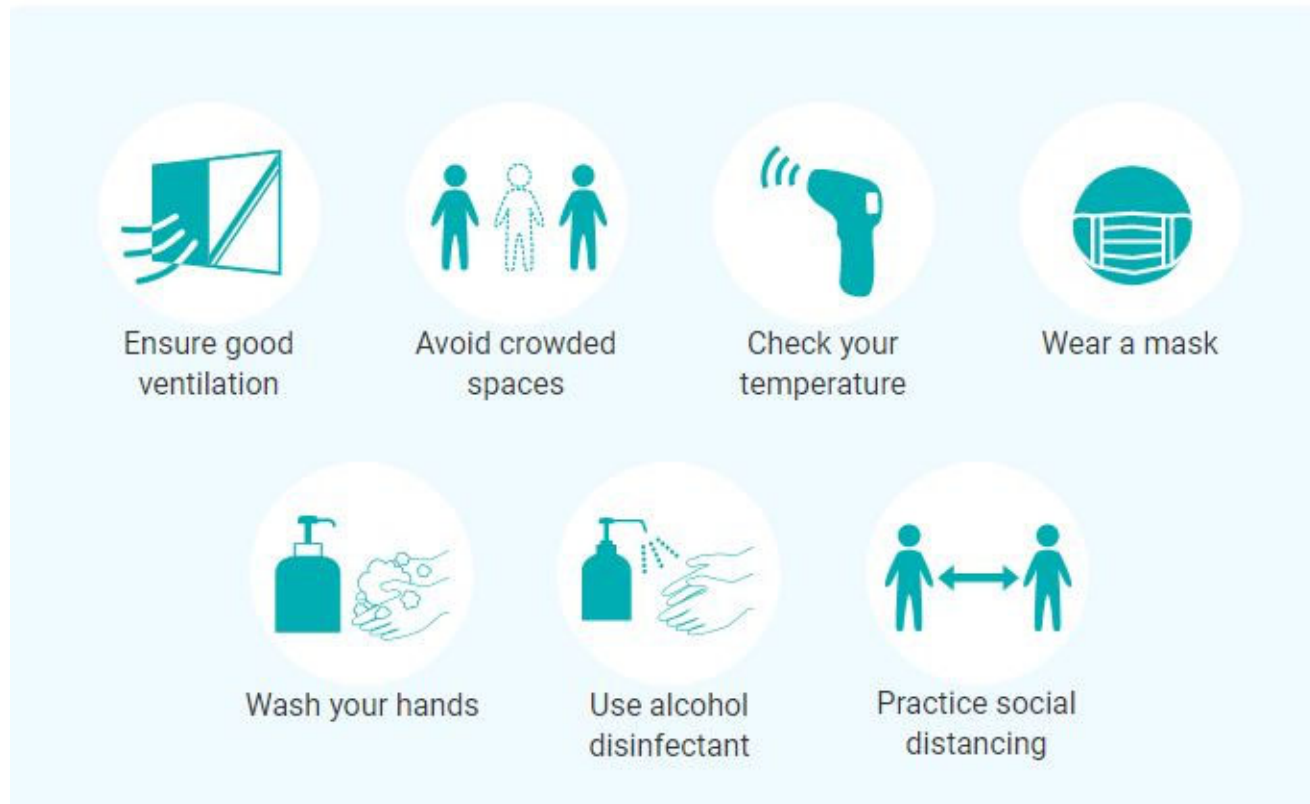
You need to complete the pre-registration via MySOS Web or MySOS app at least 6 hours prior to the scheduled arrival date and time of your flight.

Please see <https://www.hco.mhlw.go.jp/en/> and <https://www.hco.mhlw.go.jp/fasttrack/en/> for your reference.

Not changed

COVID-19 measures, recommendations, and guidelines during your stay

For a safe and positive travel experience, we kindly request both visitors and residents to adhere to the following safety protocols:



Reference: <https://visitokinawajapan.com/plan-your-trip/covid-19-safe-travel-okinawa/>

In case you find possible symptom of COVID-19

Please check your health daily, and if you find COVID-19 symptoms, including fever, respiratory symptoms, and fatigue, please inform JASIC and contact a medical facility immediately for consultation or examination as needed and follow the instruction.

Japan Visitor Hotline (Foreign Language Call Center) : 050-3816-2787
365 days, 24 hrs in Japanese, English, Chinese, and Korean

Free medical consultation line in Okinawa: 0570-050-235
365 days, 24 hrs in 15 languages

There is a free, 24-hour medical consultation service for international visitors in case of sudden illness or injury. Resident nurses will ask you about your symptoms and offer advice and information on clinics with foreign language-speaking staff on hand.

<https://visitokinawajapan.com/plan-your-trip/covid-19-safe-travel-okinawa/>

**Please take care and have safe, healthy
and pleasant stay in Japan!**