



29th IWG PTI Unique Identifier – CITA's view

February 7th, 2023

Eduard Fernández | Executive Director | e.fernandez@citainsp.org

PRACTICAL EXAMPLE



**UI, as conceived today,
obliges to download a
PDF to check whether
this semitrailer has a
triangular
retroreflective device
(IIIB)**



PRACTICAL EXAMPLE



PRACTICAL EXAMPLE



UI, as conceived today, obliges to download a PDF to check whether this truck has a side marker lamp (SM1) Incorporated in the rear group of lamps



The 1997 Agreement and Directive 2014/45/EU require to check the presence of the devices shown in the examples

Testing during the life cycle of a vehicle should be relatively simple, quick and inexpensive, while at the same time effective in achieving the objectives of this Directive.

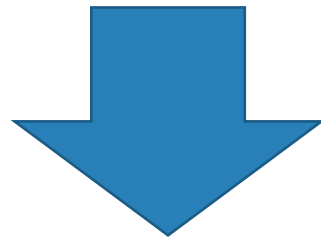
Directive 2014/45/EU, recital (21)

Conservative estimates

6 UI per vehicle (only lighting devices)

≈ 200 M inspections / year (only EU)

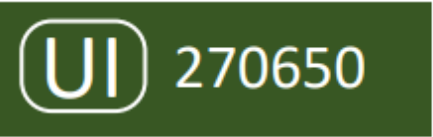


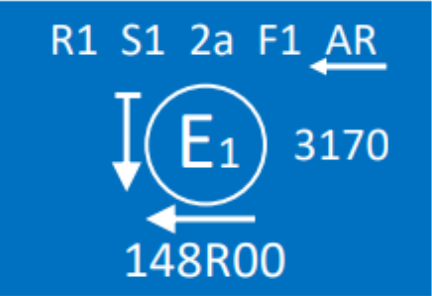
5% of UI require access to the Summary Document



60 M access/year

(with the corresponding authorized access
and amount of users)

KEEP RELEVANT DATA

<u>"Summary"</u>





Headline

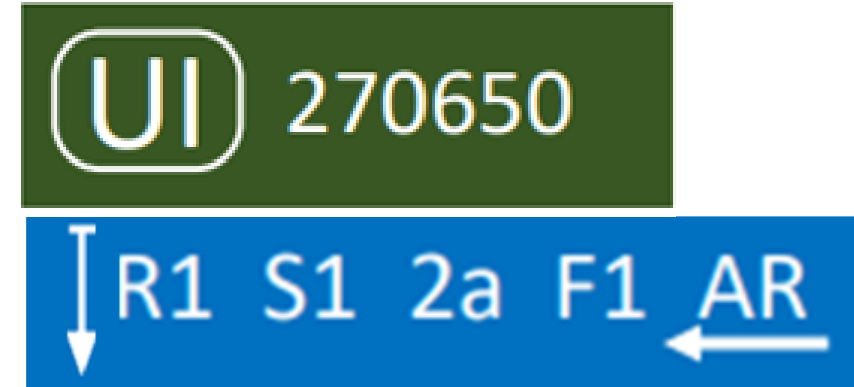
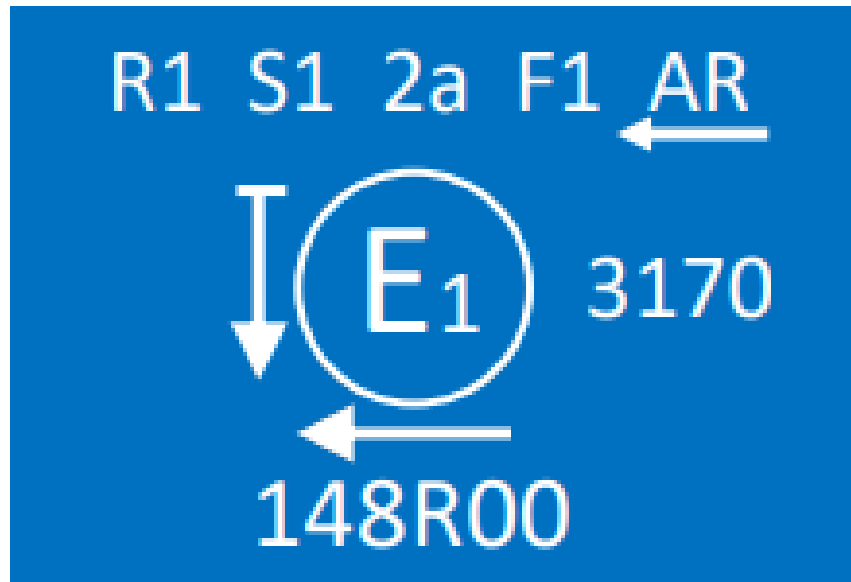
The Unique Identifier marking as on the device

One or more picture(s) / drawing(s) of the device

The alternative marking as in the Regulation /
Explaining text for the device

If necessary this document may have more pages

KEEP RELEVANT DATA



Drawings not to scale

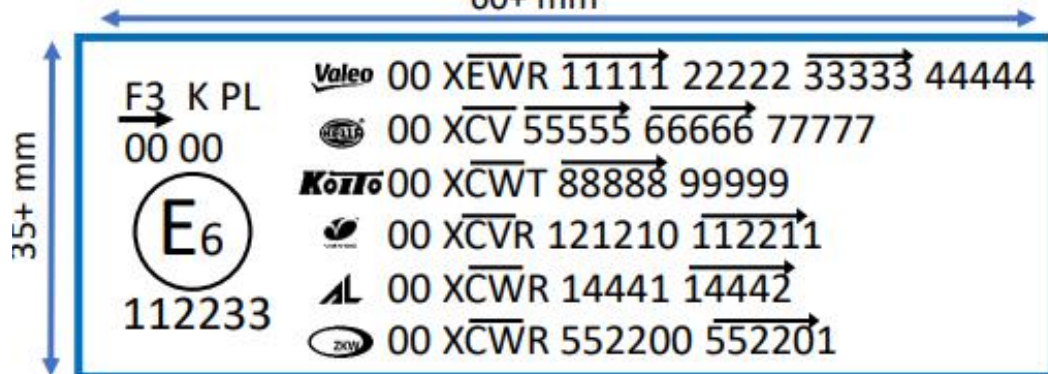
KEEP RELEVANT DATA



Approval marking of a device used as a beam contributor for different AFS systems
(On any fixed part visible after installation i.e. lens)



60+ mm



UI 270650

F3 K

XEWR
XCV
XCWT
XCVR
XCWR

Drawings not to scale

SOME MORE EXAMPLES



What is this?
Function?

SOME MORE EXAMPLES



- Is the rear retro-reflector there?
- Is the side marker included?
- Is the side retro-reflector there?
- Right side?

COMPLEX MANAGEMENT



LITTLE ADDED VALUE



E₄ 21 R – 012439

E₄ 61 R – 002439

E₄ 100 R – 022492

UI 453908

UI 659000

UI 123456

LITTLE ADDED VALUE



E₄	21 R – 012439	UI	453908
E₄	61 R – 002439	UI	659000
E₄	100 R – 022492	UI	123456

QUESTIONS TO SOLVE



- **Some information must stay on the vehicle/device**
- **Embedded UI to be mandatory: one click access to information**
- **Information machine-readable**
- **Possibilities for mass download**
- **Possibilities for additional information**
- **Proper definition of the change management**



Thank you for your attention!

www.citainsp.org

Rue du Commerce 123 - 1000 Brussels, Belgium

+32 (0)2 469 06 70

secretariat@citainsp.org