

P r o p o s a l f r o m S p a i n f o r  
V e h i c l e T y p e A p p r o v a l  
C h a r g i n g M o d e s 2 a n d 3

Submitted by the experts from the Spain to the  
GRE IWG-EMC- 39th Session

Friday, 15<sup>th</sup> September, 2023

# — CONTENTS —

1. Introduction & Scope
2. Mode 2 justifications and proposal for Annexes 11, 12, 13, 15 and 16
3. Mode 3 justifications and proposal for Annex 12

## — INTRODUCTION & SCOPE —

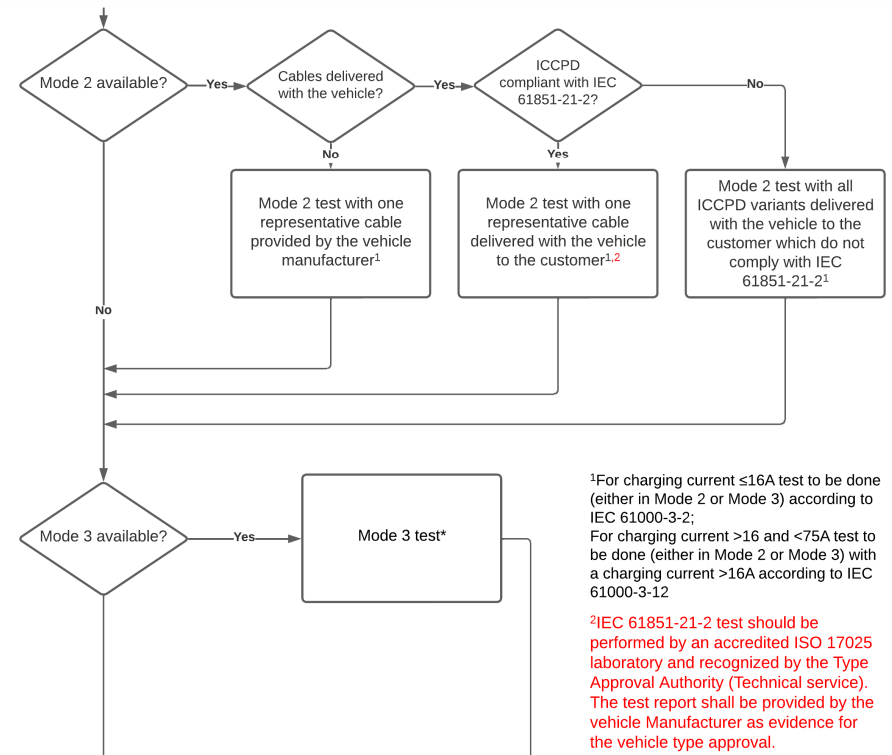
- The following slides has been prepared to find a common agreement and to be voted by the CP's within this 39th meeting and to be included in the 07 series of amendments.
- This presentation is performed taking account previous OICA proposals and the work performed by the GRE IWG-EMC.
- This presentation has taken also in account flowcharts of the document "*IWG-EMC-39-05 (OICA) comments to GRE-2023-27*" to remark the differences with the Spanish position.
- This presentation will be accompanied of a document including the complete flowcharts affected with the changes proposed by Spain.

# MODE 2

## ANNEXES 11, 12, 13, 15 AND 16

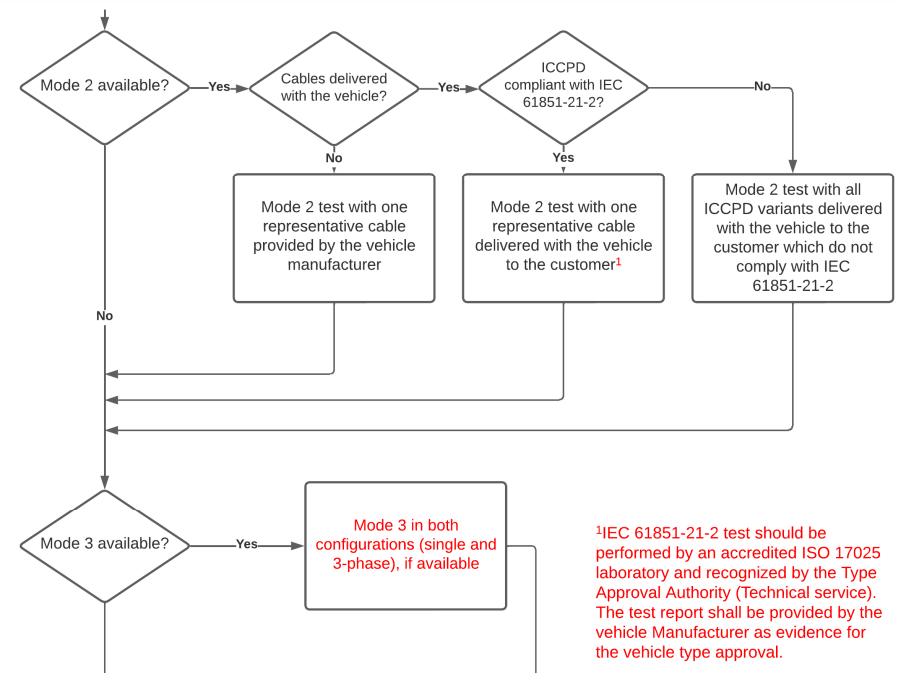
- Spain main concern is due to the test experience with **Annexes 11, 12, 13, 15 and 16** with different results (OK/NOK) in REESS charging Mode 2 with ICCPD cables certified IEC 61851-21-2.
- If **ICCPD cable/s delivered with the vehicle and IEC 61851-21-2 compliant**, Spain agree to test Mode 2 with one representative cable delivered with the vehicle to the customer but,

*IEC 61851-21-2 test should be performed by an accredited ISO 17025 laboratory and recognized by the Type Approval Authority (Technical service). The test report shall be provided by the vehicle Manufacturer as evidence for the vehicle type approval.*



# MODE 2 ANNEX 13

- Spain main concern is due to the test experience with [Annex 13](#) with different results (OK/NOK) in REESS charging Mode 3 because other vehicle components not related to REESS could affect to the result of conducted emissions depending on the charge mode in single-phase or three-phase.
- Both **single-phase and three-phase should always be considered** for testing in Mode 3 (if vehicle manufacturer declare both types of connection).



T H A N K Y O U

F O R Y O U R K I N D A T T E N T I O N