



European Association of Automotive Suppliers

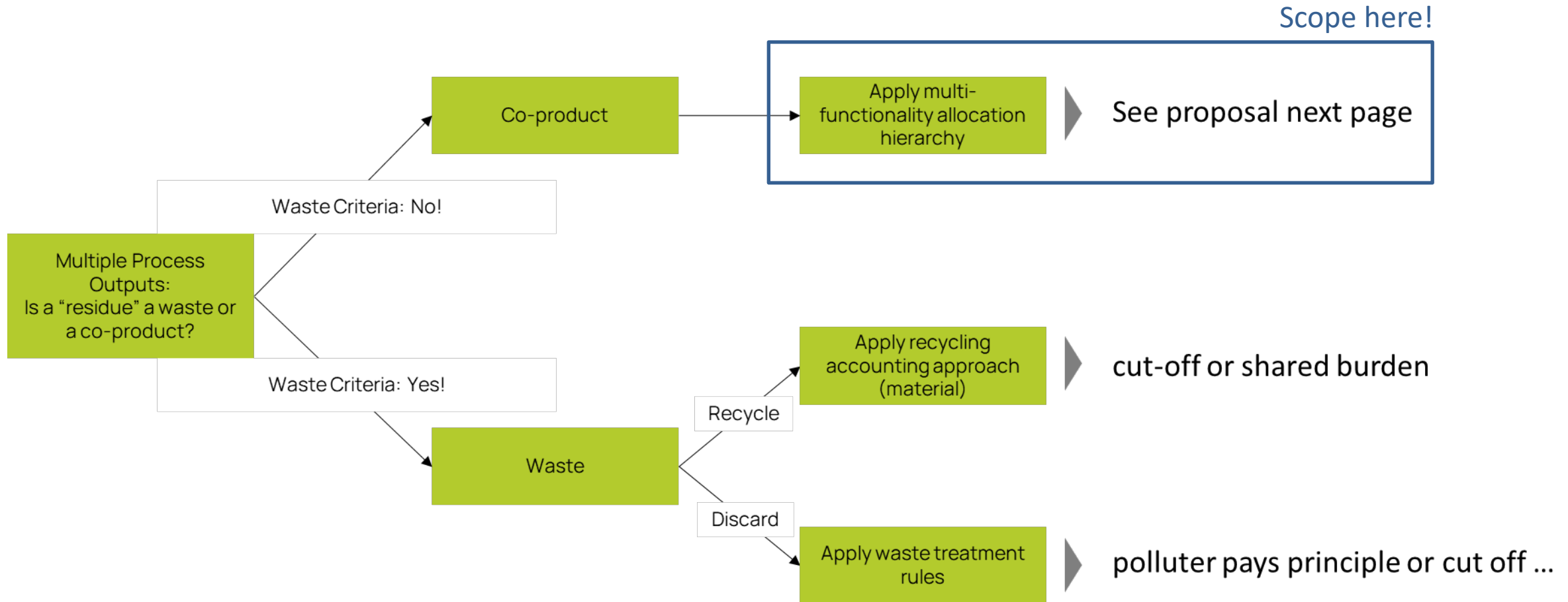
UNECE IWG A-LCA SG3

Proposal on 'Allocation Hierarchy'

March 22th 2024



- An allocation hierarchy is relevant in multi output processes (co-products)

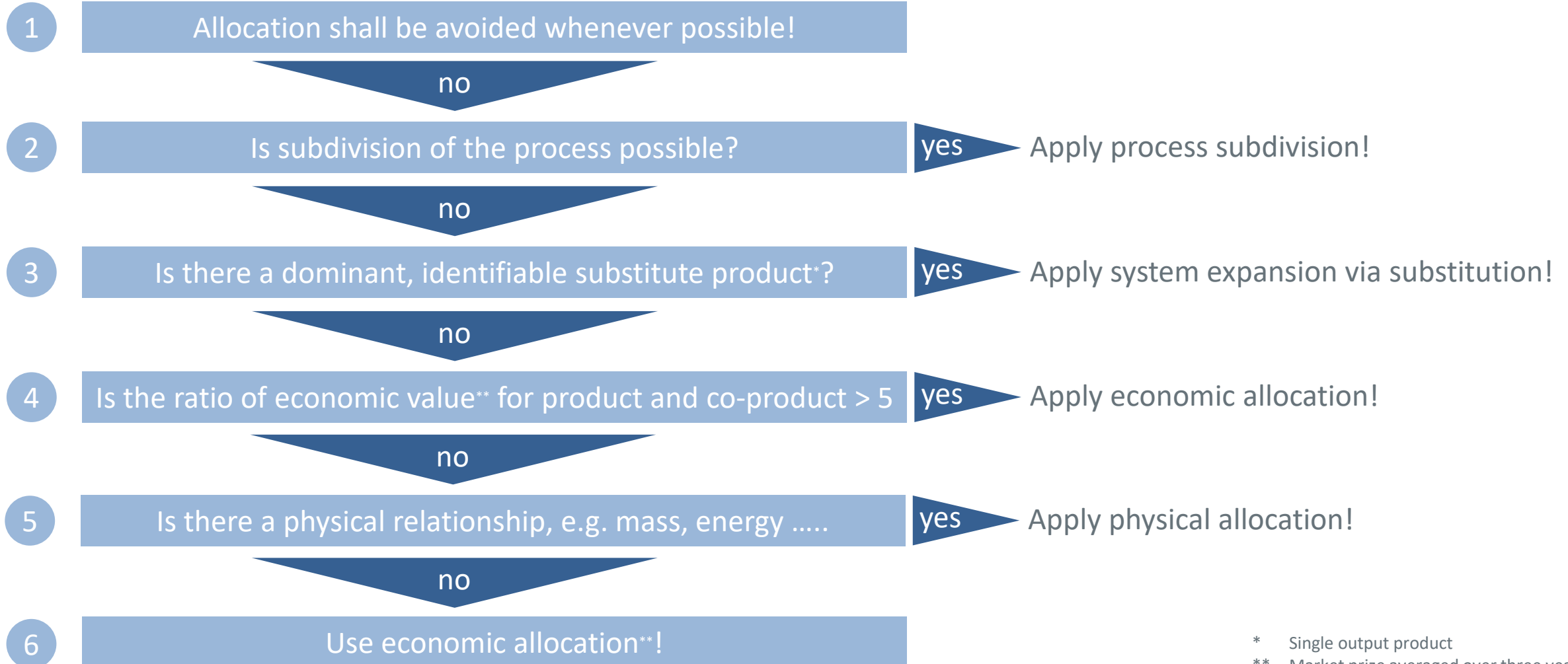


UNECE IWG A-LCA

CLEPA INPUT: 4.1 ALLOCATION HIERARCHY FOR MULTI OUTPUT PROCESSES



- Allocation hierarchy according ISO14067,



* Single output product

** Market prize averaged over three years



European Association of Automotive Suppliers

Thank you