



European Association of Automotive Suppliers

UNECE IWG A-LCA SG3

March 19th 2024

UNECE IWG A-LCA

ORGANIZATIONAL TOPICS



4. Representatives of SG3 parties:

Contracting parties

- China Tongzhu Zhang
- Japan Tetsuya Suzuki (com)
- Korea Suhan Park
- UK Eleanore Deansmith

NGOs

- AECC Joachim Demuynck
- CLEPA Ansgar Christ
- ETRMA Alex van Gelderen
- Eurogas Alberto Castagnini
- ~~ICCT~~ ~~Georg Bieker~~
- MECA Michael Geller
- OICA Tina Dettmer

UNECE IWG A-LCA

ORGANIZATIONAL TOPICS



4. Opinions on proposals:

Discussion Topics		Status	Poll Results											
			China	Japan	Korea	UK	AECC	CLEPA	ETRMA	EUROGAS	MECA	OICA		
Aspects	Allocation hierarchy	Discussion												
	Chain of custody	tbd												
	Data quality rating	Proposal	✓	o	o	o	✓	✓	✓	✓	✓	✓	✓	✓
	Declared Unit	Proposal	✓	✓	✓	✓	✓	✓	✓	✓	✓	✓	✓	✓
	Geography	tbd												
	GHGases	Proposal	✓	✓	o	o	✓	✓	✓	✓	✓	✓	✓	✓
	Infrastructure	tbd												
	Materiality limit	Discussion												
	Offsets	tbd												
	Primary data share	Proposal	✓	o	o	o	✓	✓	✓	✓	✓	✓	✓	✓
	Recycling	tbd												
	Representative vehicle	tbd												
	Secondary data	tbd												
	System boundaries	tbd												
	Transport emission	Discussion												
Transparency vs Verification	tbd													
Waste	tbd													

✓ Approval

o Undecided

✗ Rejection

✓ Explicit

✓ Silent

▼ Comments are provided in the Excel document



European Association of Automotive Suppliers

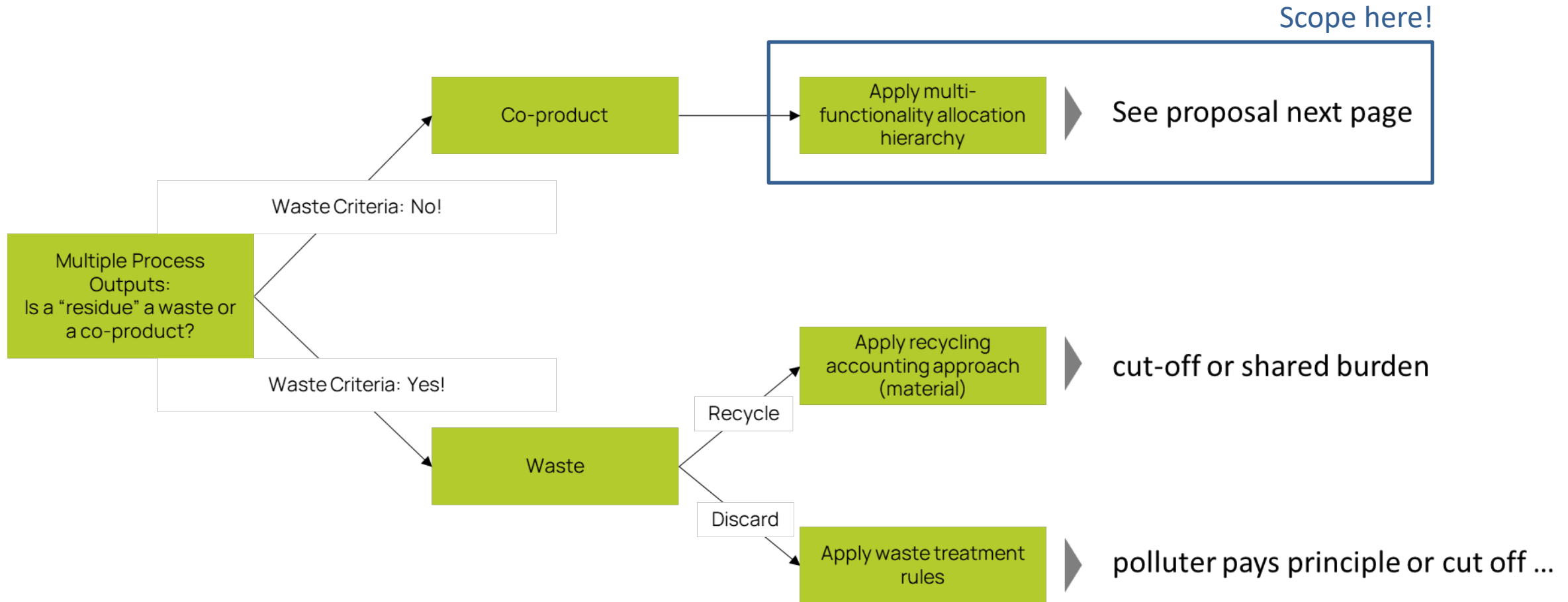
UNECE IWG A-LCA SG3

Proposal on 'Allocation Hierarchy'

March 19th 2024



- An allocation hierarchy is relevant in multi output processes (co-products)

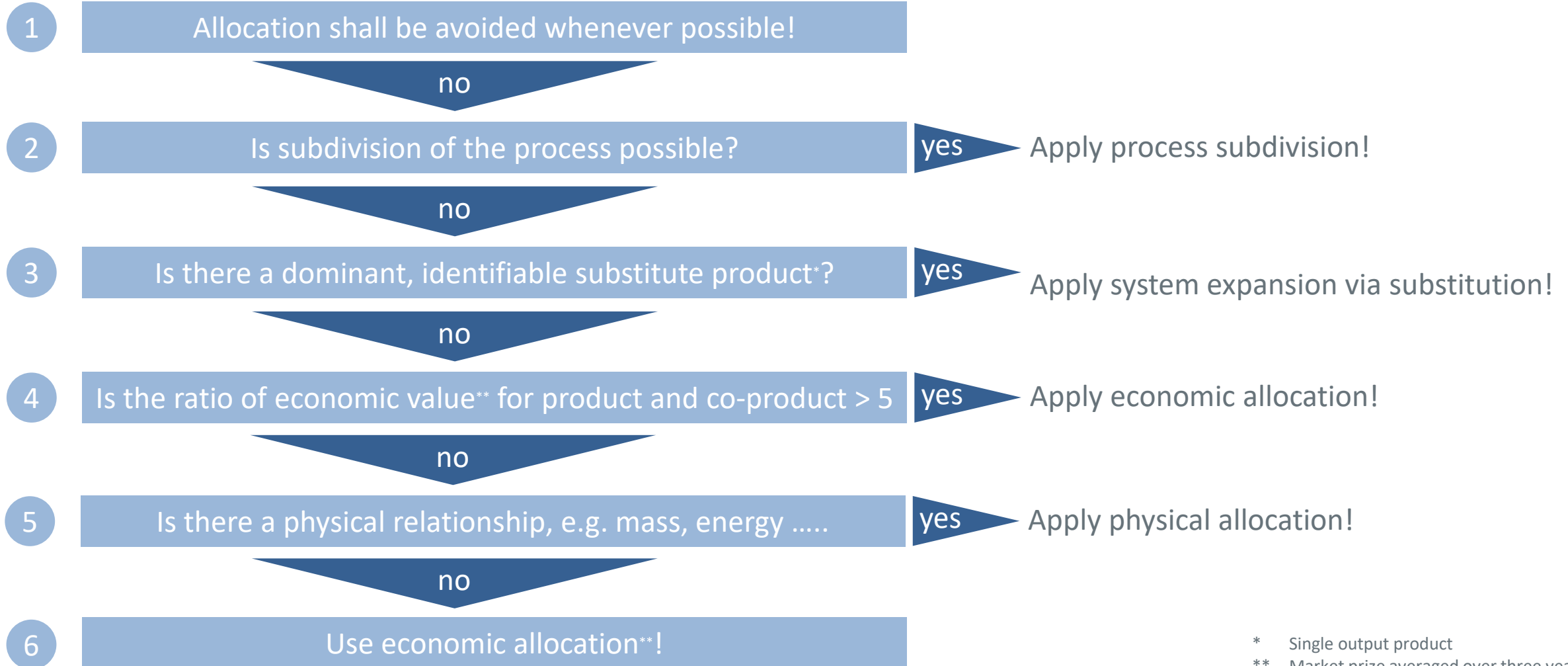


UNECE IWG A-LCA

CLEPA INPUT: 4.1 ALLOCATION HIERARCHY FOR MULTI OUTPUT PROCESSES



- Allocation hierarchy according ISO14067,



* Single output product

** Market prize averaged over three years



European Association of Automotive Suppliers

UNECE IWG A-LCA SG3 Input on 'Glossary'

March 19th 2024

UNECE IWG A-LCA

CLEPA INPUT: 4.2 GLOSSARY



- Input to the Glossary from OICA incorporated

Term	Definition	Source
A Allocation	Partitioning the input or output flows of a process or a product system between the product system under study and one or more other product systems	DIN EN ISO 14040, Feb. 2021
A Attributable process	Those processes that consist of all service, material and energy flows that become, make and carry a product throughout its life cycle.	WBCSD Pathfinder
A Attributionable	process-based modelling intended to provide a static representation of average conditions, excluding market-mediated effects.	PEF guidelines (EC-JRC, 2021).
A Average data	production-weighted average of specific data	PEF guidelines (EC-JRC, 2021).
B Bill of Materials	a bill of materials or product structure (sometimes bill of material, BOM or associated list) is a list of the raw materials, sub-assemblies, intermediate assemblies, sub-components, parts and the quantities of each needed to manufacture the product in the scope of PEF. In some sectors it is equivalent to the bill of components.	PEF guidelines (EC-JRC, 2021).
B Biogenic carbon	Carbon derived from biomass	DIN EN ISO 14067, Feb. 2019
B Biomass	material of biological origin, excluding material embedded in geological formations and material transformed to fossilized material. Biomass includes organic material (both living and dead), e.g. trees, crops, grasses, tree litter, algae, animals, manure and waste of biological origin. Biomass excludes peat.	ISO 14 067 / ISO 14021
C Carbon offsetting	Mechanism for compensating for a full PCF or a partial PCF through the prevention of the release of, reduction in, or removal of an amount of GHG emissions in a process outside the product system under study	DIN EN ISO 14067, Feb. 2019
C Climate Change	Environmental Footprint impact category considering all inputs and outputs that result in greenhouse gas (GHG) emissions. The consequences include increased average global temperatures and sudden regional climatic changes.	PEF guidelines (EC-JRC, 2021).
C Closed-loop recycling	In a closed loop, the secondary material from one product system is either reused in the same product system (real closed-loop) or used in another product system without changing the inherent technical properties of the material (quasi closed-loop).	Catena-X PCF Rulebook V2

- Glossary is to be understood as living document
- Glossary to be provided to the IWG and SGs



European Association of Automotive Suppliers

UNECE IWG A-LCA SG3 Input on 'Waste & Recycling'

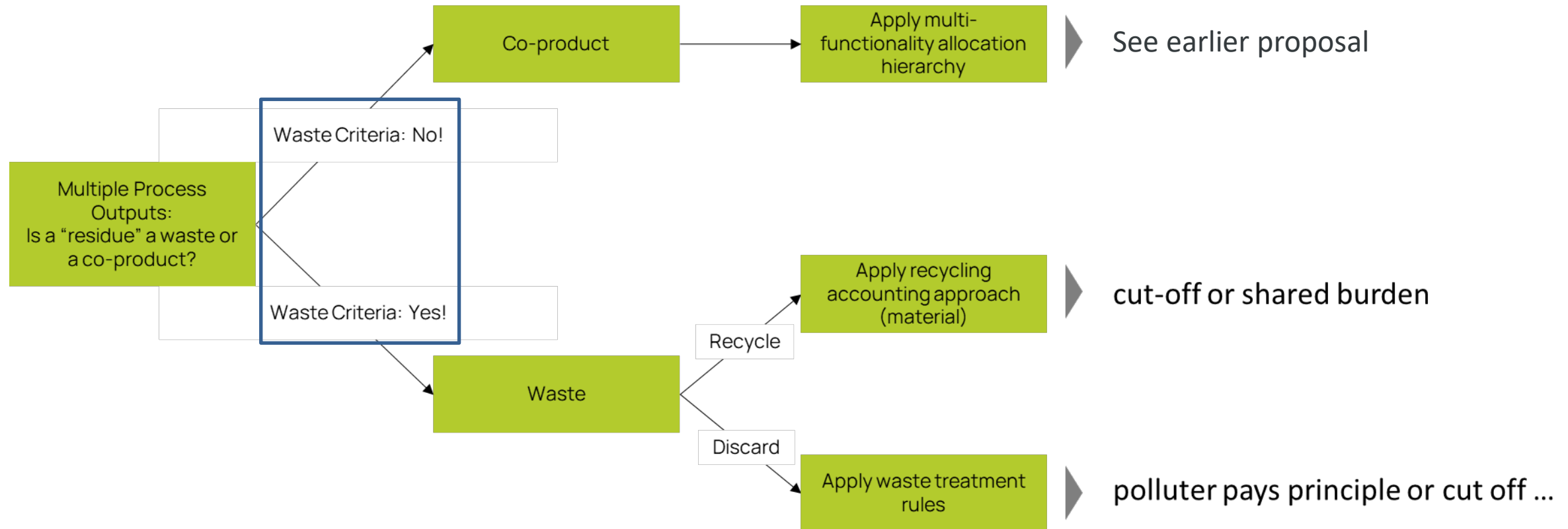
March 19th 2024

UNECE IWG A-LCA

CLEPA INPUT: 5.1 WASTE & RECYCLING



- First question to answer: Waste or Co-product?

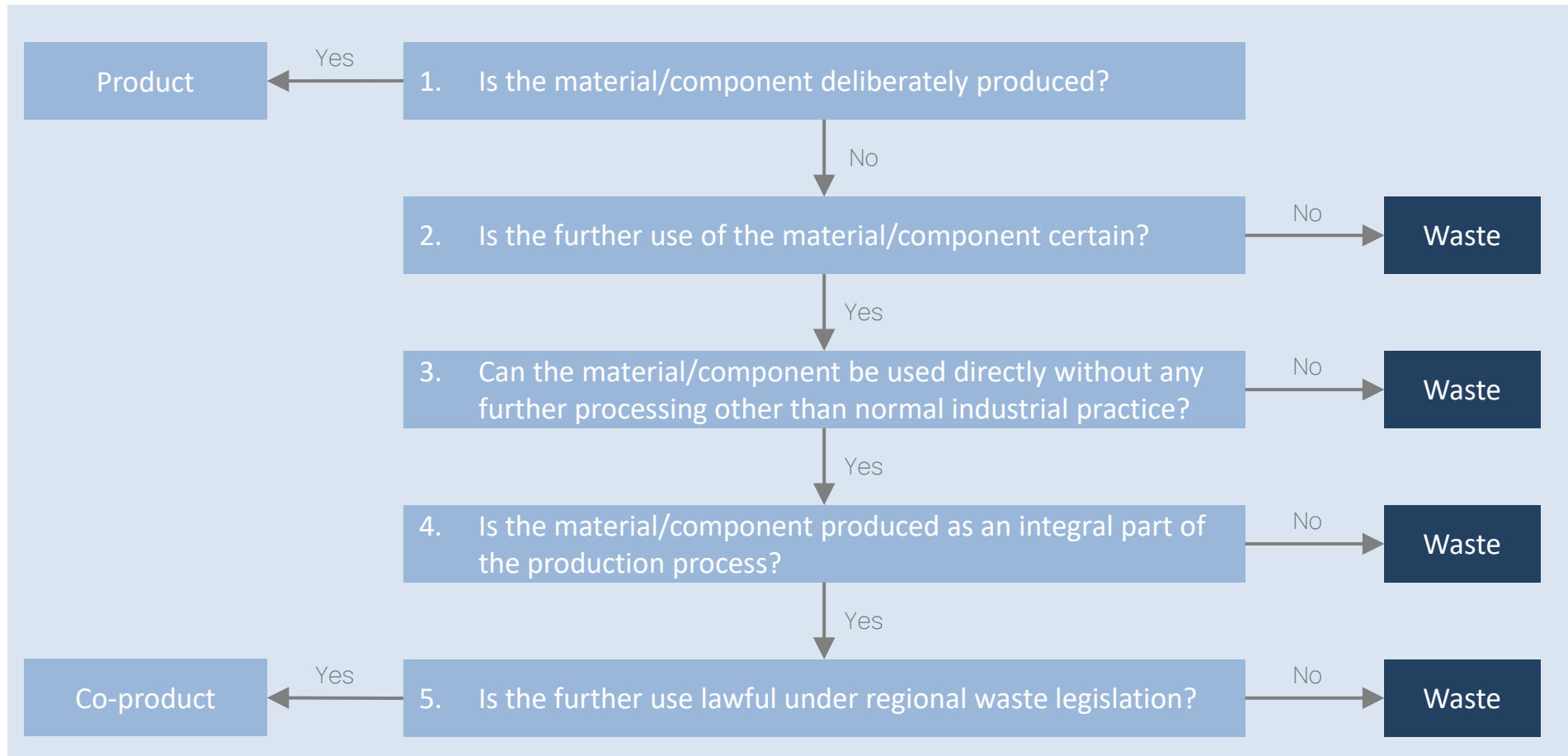


UNECE IWG A-LCA

CLEPA INPUT: 5.1 WASTE & RECYCLING



- Waste Criteria



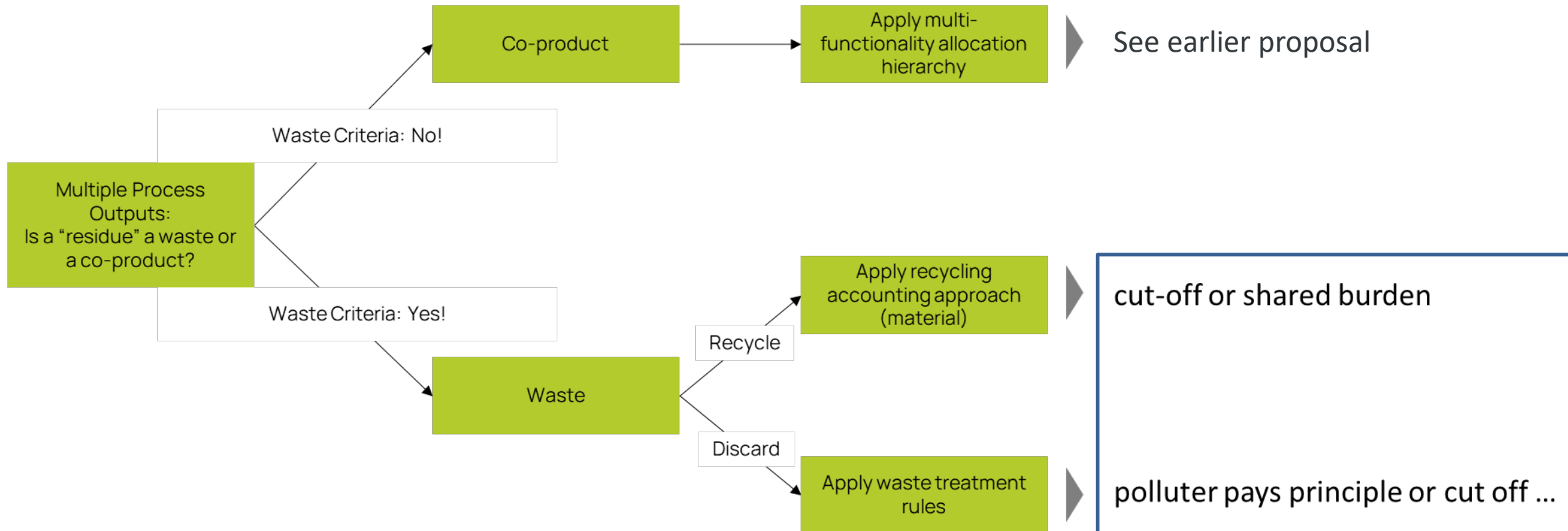
Following Waste Frame Directive

UNECE IWG A-LCA

CLEPA INPUT: 5.1 WASTE & RECYCLING



- First question to answer: Waste or Co-product?



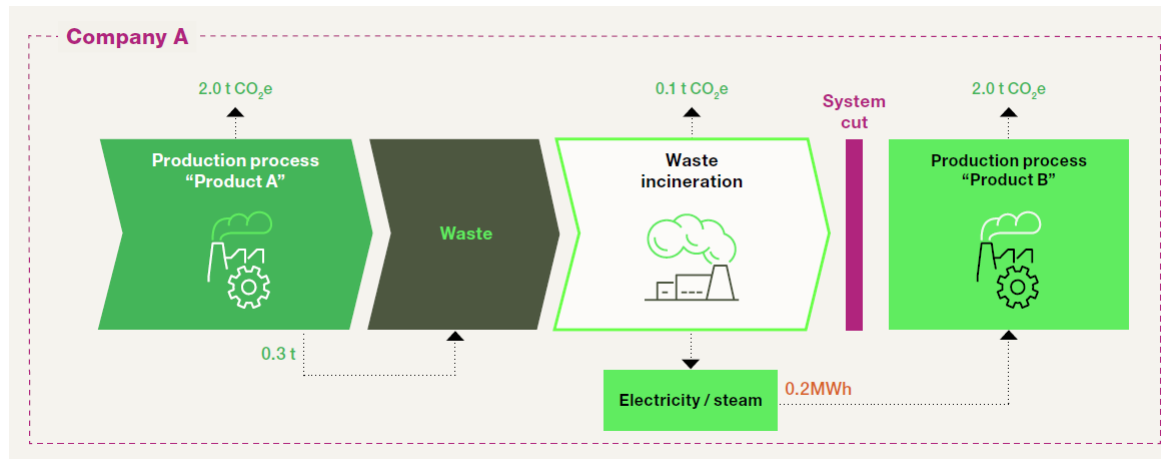
UNECE IWG A-LCA

CLEPA INPUT: 5.1 WASTE & RECYCLING

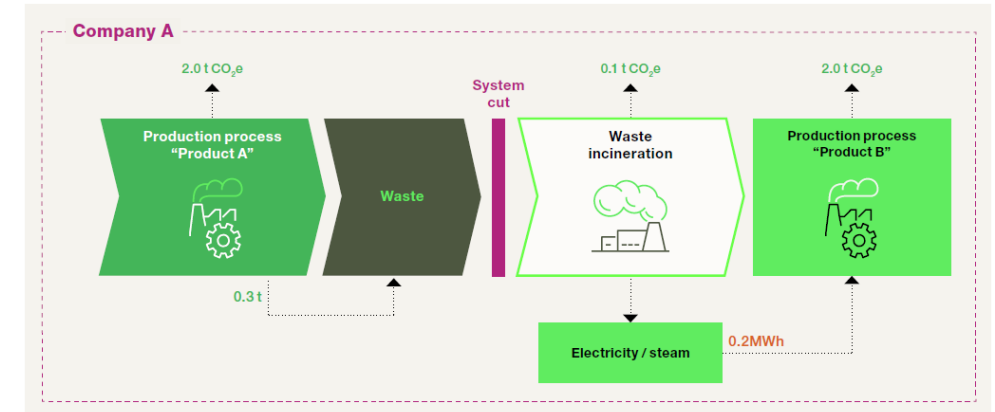


- Waste Treatment

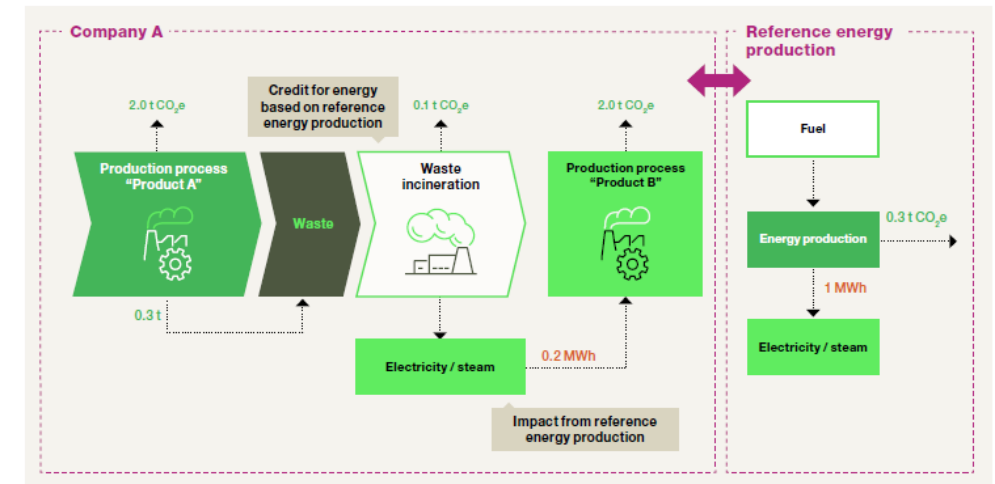
Polluter pays (or reverse cut-off)



Cut-off



Substitution



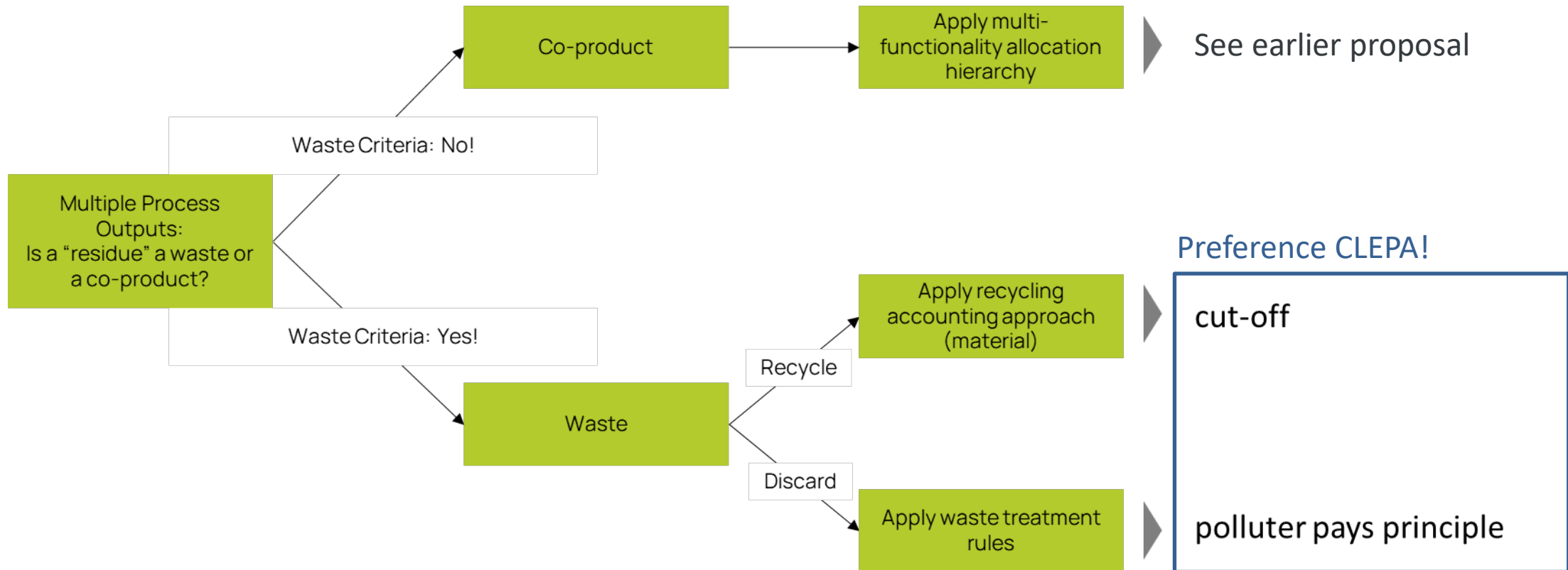
Courtesy Tfs

UNECE IWG A-LCA

CLEPA INPUT: 5.1 WASTE & RECYCLING



- First question to answer: Waste or Co-product?





European Association of Automotive Suppliers

UNECE IWG A-LCA SG3 Input on 'System boundaries'

March 19th 2024

UNECE IWG A-LCA

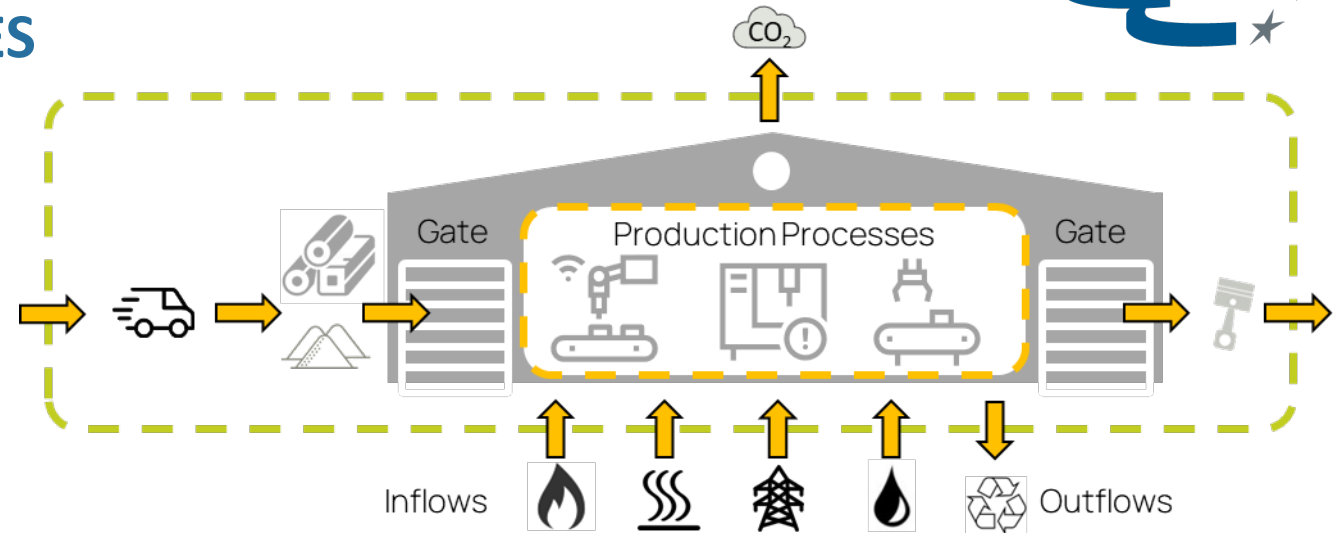
CLEPA INPUT: 5.2 SYSTEM BOUNDARIES



- Scope for Gate-to-Gate Reporting

Included

- Production processes
- Heat production / distribution
- Cooling (air & water or coolant) / distribution
- Pressurized air production and distribution
- Auxiliaries provision & disposal
- Lighting of production area
- Onsite generation of electricity
- Waste treatment
- IT for production control
- Quality management
- Inbound transport & logistics
- On site transport & logistics
- Packaging
- Maintenance of production machines



Excluded

- Indirect activities, e.g. administration, HR, sales, controlling ...
- Product development/research
- Employee commuting
- Sanitary facilities
- Canteen, break areas
- Production site facility management e.g. fire safety, plant security
- General IT
- Outbound transport & logistics

Transport from SG2 -> SG3 or SG3-> SG4 to be clarified!



European Association of Automotive Suppliers

Thank you