

JASIC preliminary study on C2 worn tyre wet performance

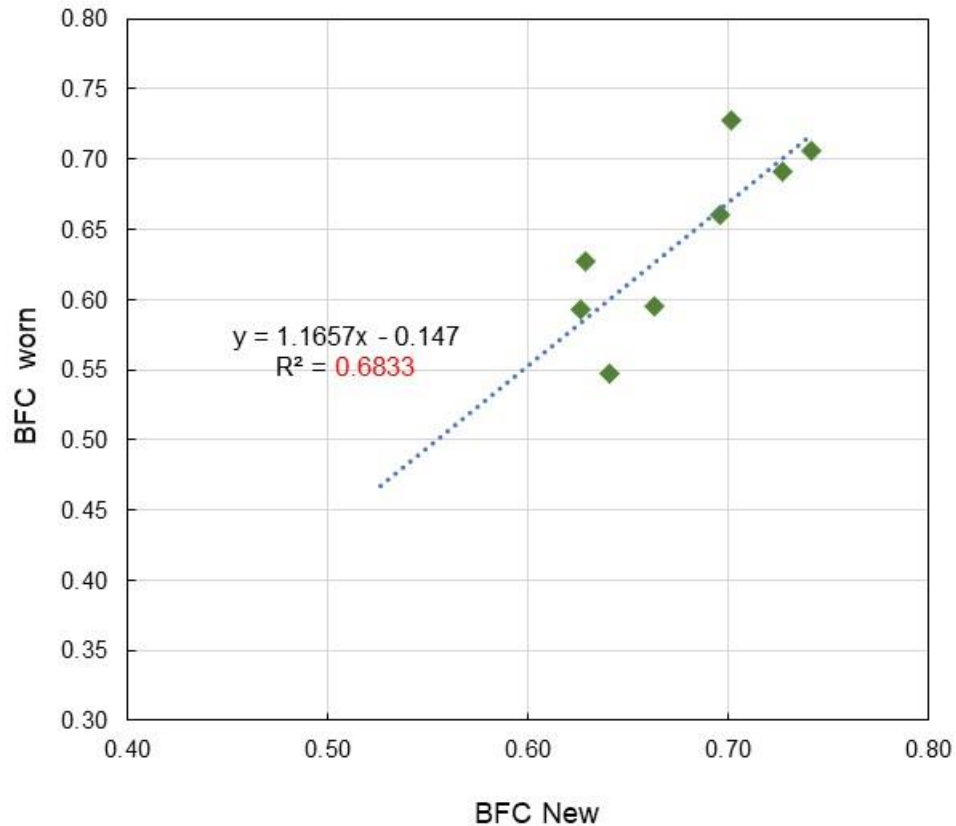
May 23, 2024

IWG WGWT

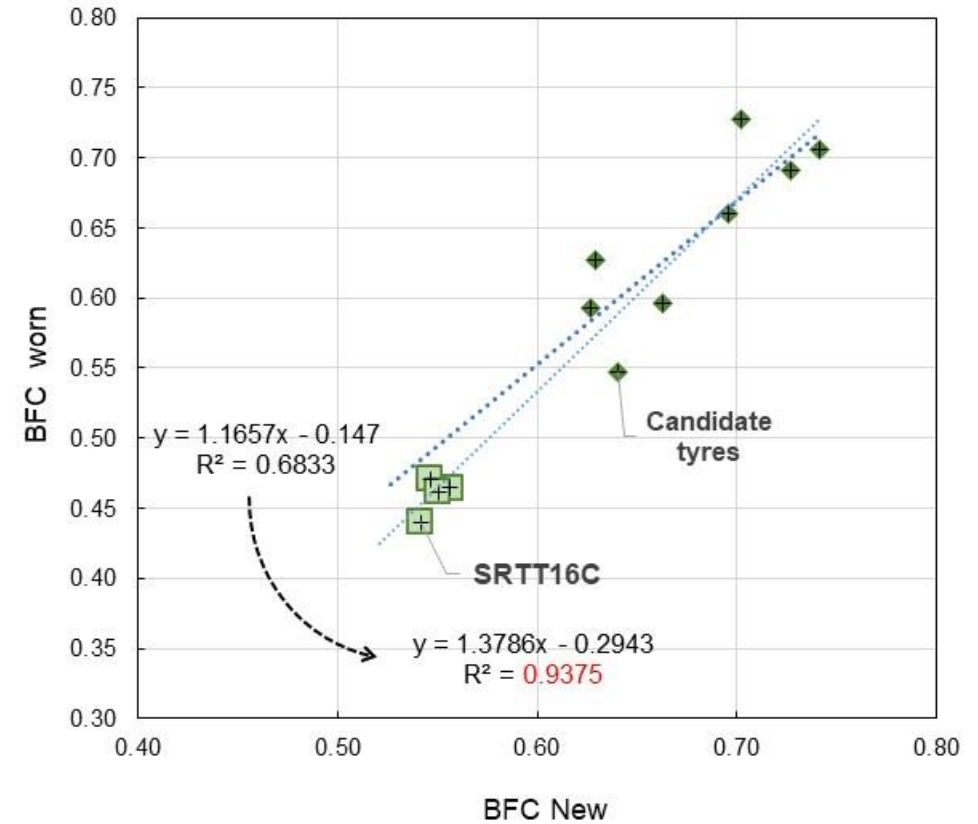


JAPAN AUTOMOBILE STANDARDS INTERNATIONALIZATION CENTER

C2 EC evaluation data

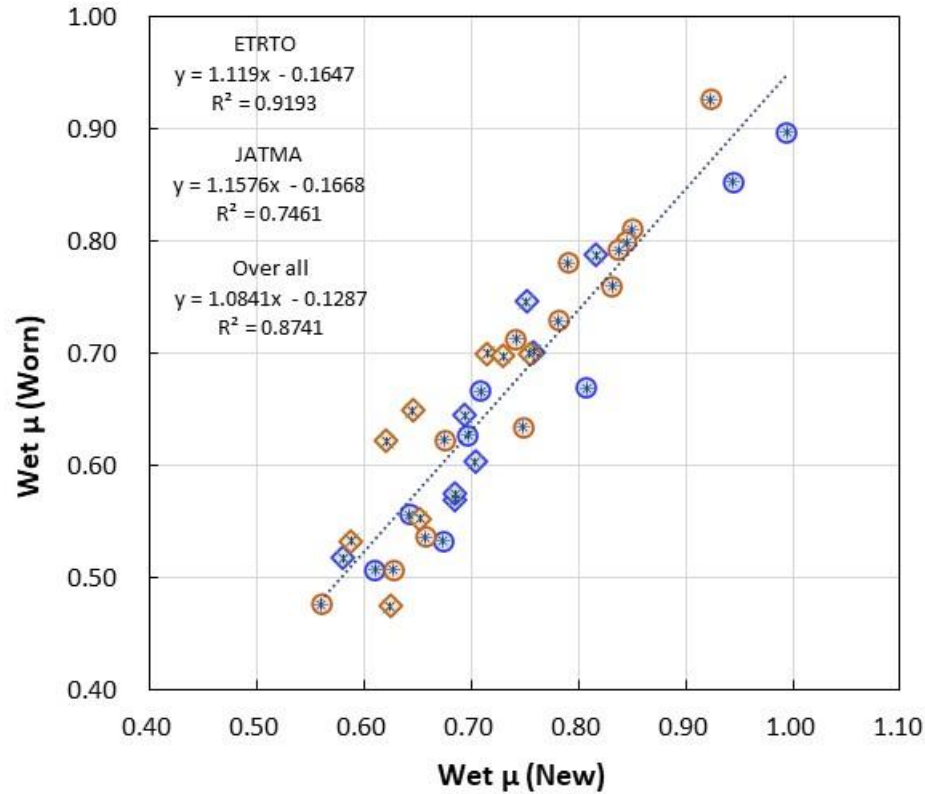


C2 candidate tyre New - worn state tyre wet performance plots dose not show good correlation.
 Note: Candidate tyre new / worn are not tested at the same period.



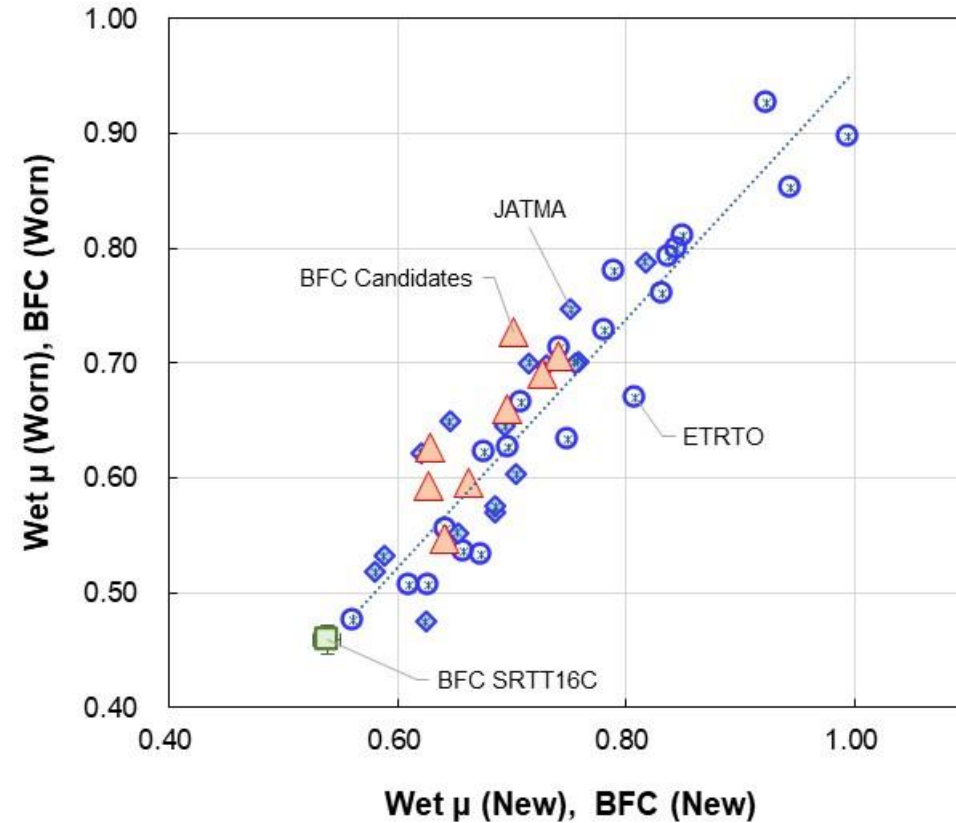
To increase the number of data assessment samples, if include SRTT16C in the data sets and proceed regression analysis, the correlation coefficient improves to 0.938.

C2 ETRTO + JATMA data

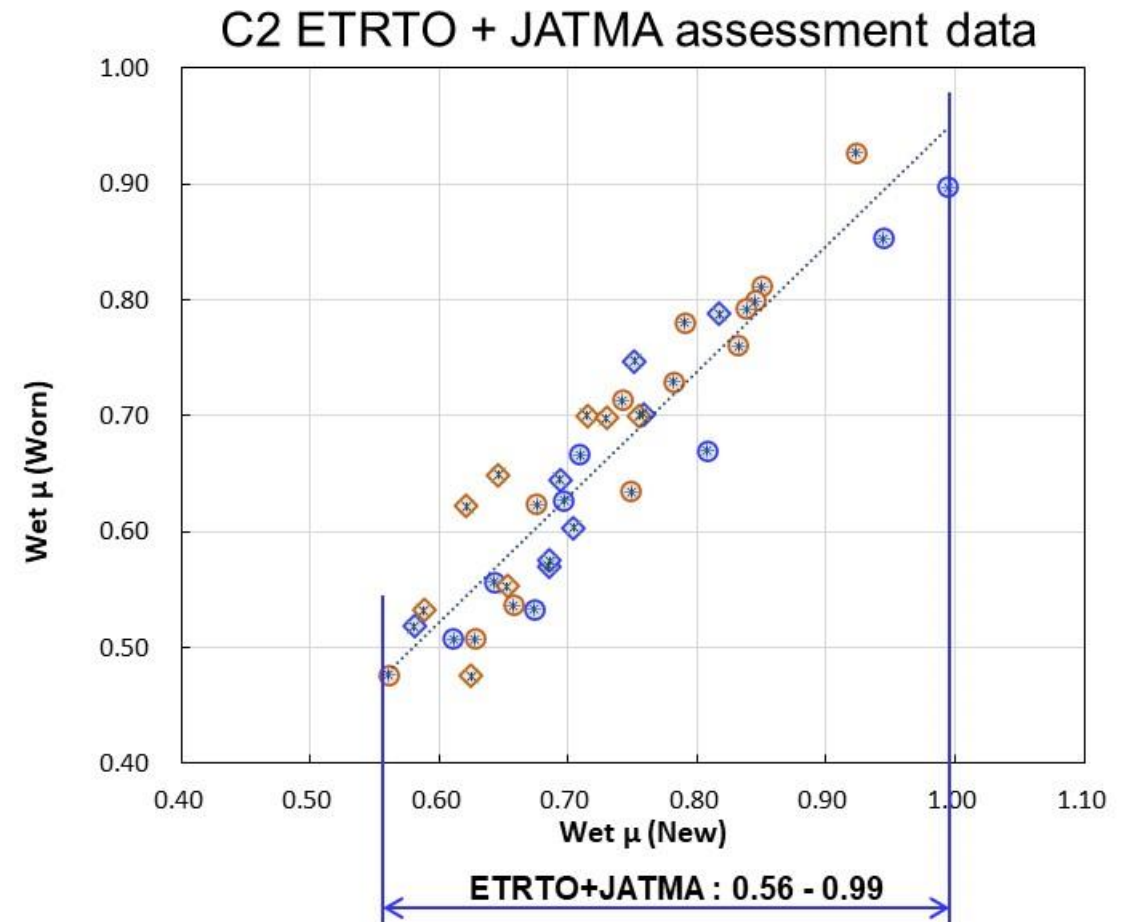
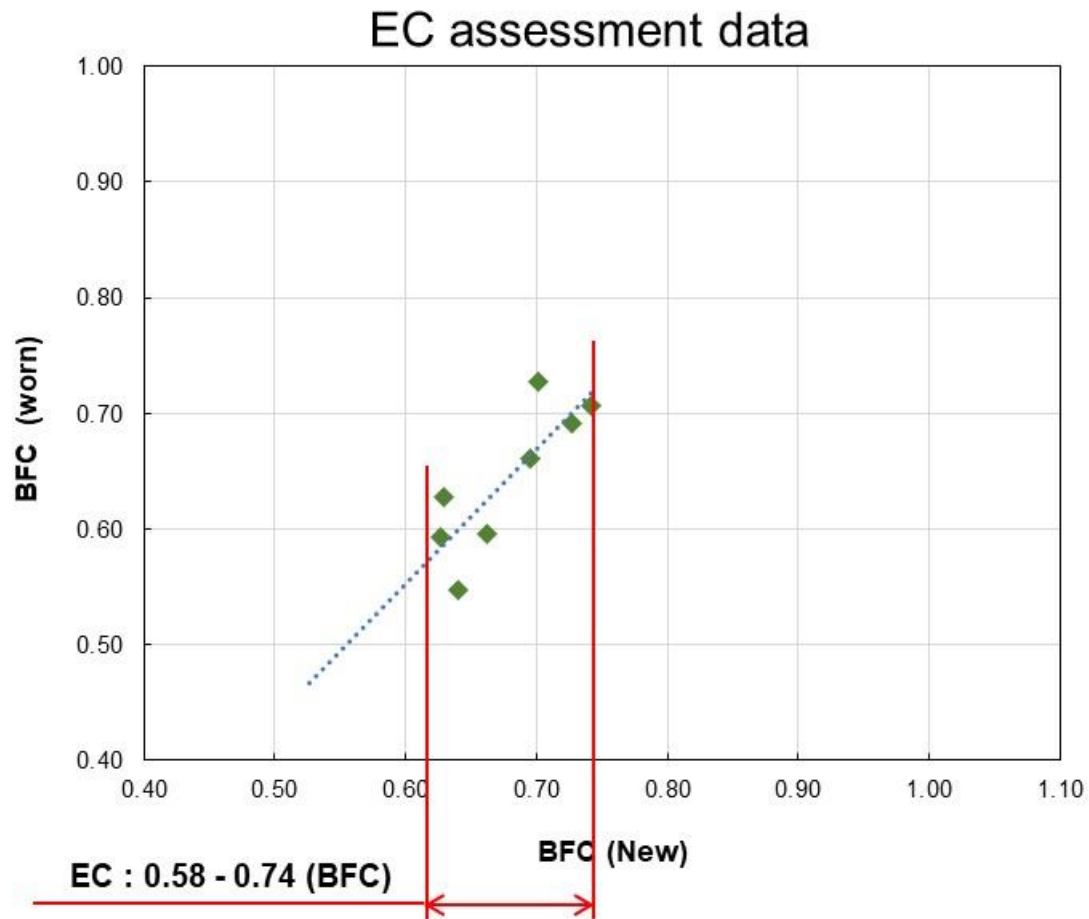


ETRTO and JATMA data show very similar trend, shows good correlation between New - worn tyre wet μ .

EC data overlayed on ETRTO & JATMA data



Overlaying the EC data, although there is a difference between Wet μ and BFC. It shows a similar trend.



- The reason for the low correlation between new and worn tyres in the EC assessment results may be due to the narrower range of assessed tyre types, that are smaller than the ETRTO/JATMA assessment sizes.
- It is recommended to add assessment tyres, such as “A grade” tyre which has high wet μ .