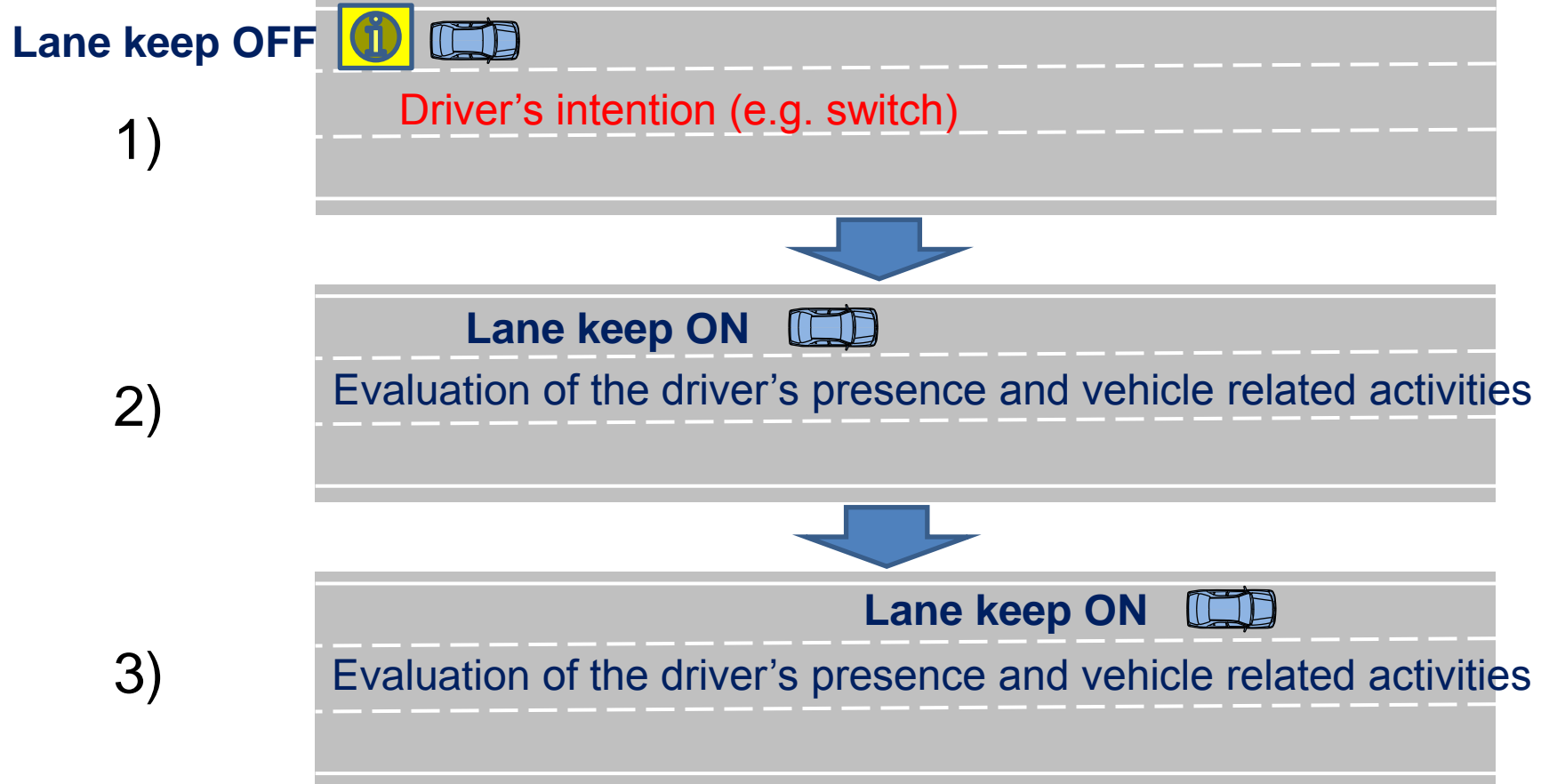


Different use cases for ACSF

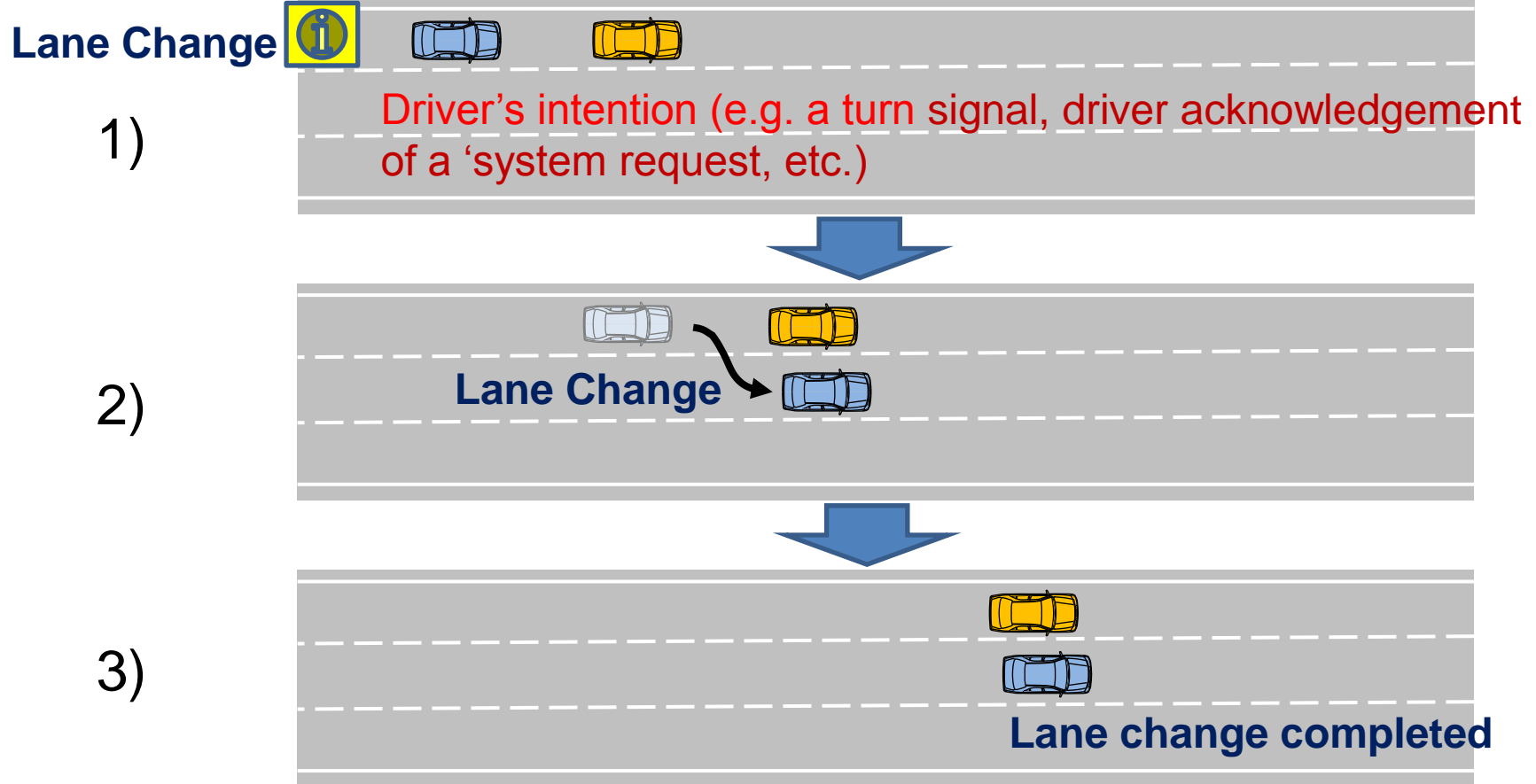
1. Lane keeping operation: In scope of ACSF informal group



In Blue : by ACSF system

In Red : by the driver

2. Lane changing operation : In scope of ACSF informal group

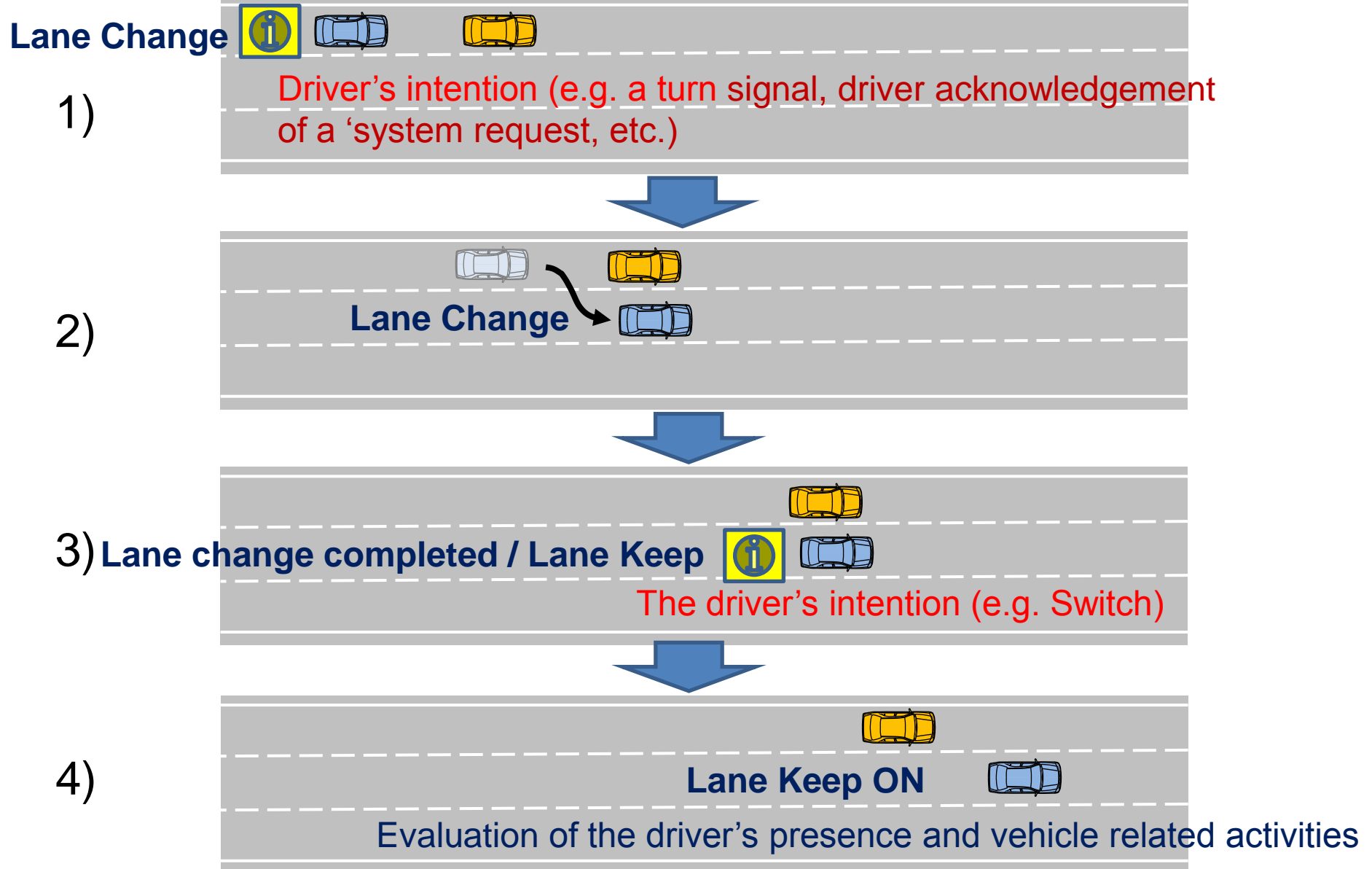


Note: When the driver operates LC switch, the vehicle moves to the target lane. After this movement, the operation of LC is finished.

In Blue : by ACSF system

In Red : by the driver

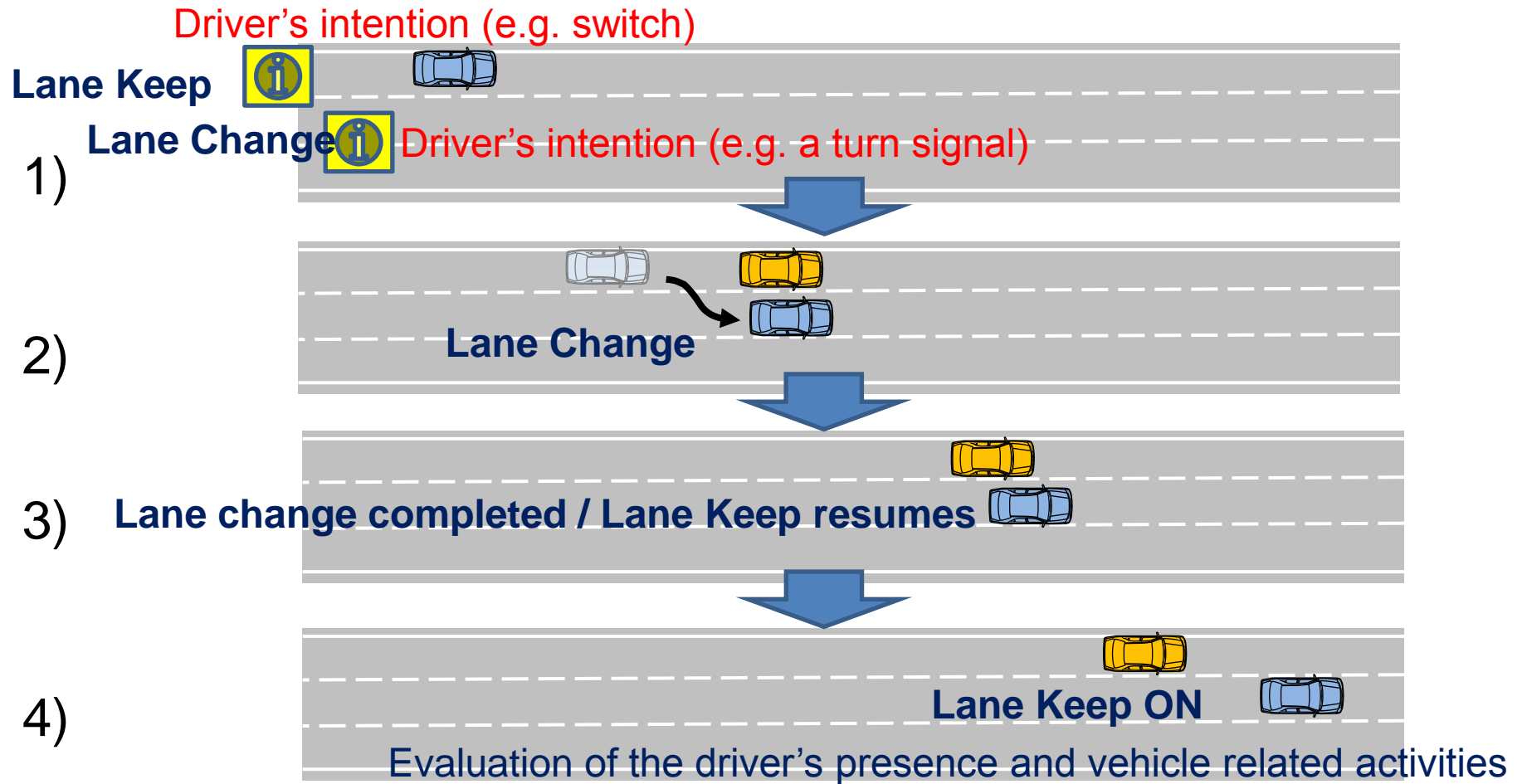
3. LC & LK operation (Sequence) : In scope of ACSF informal group



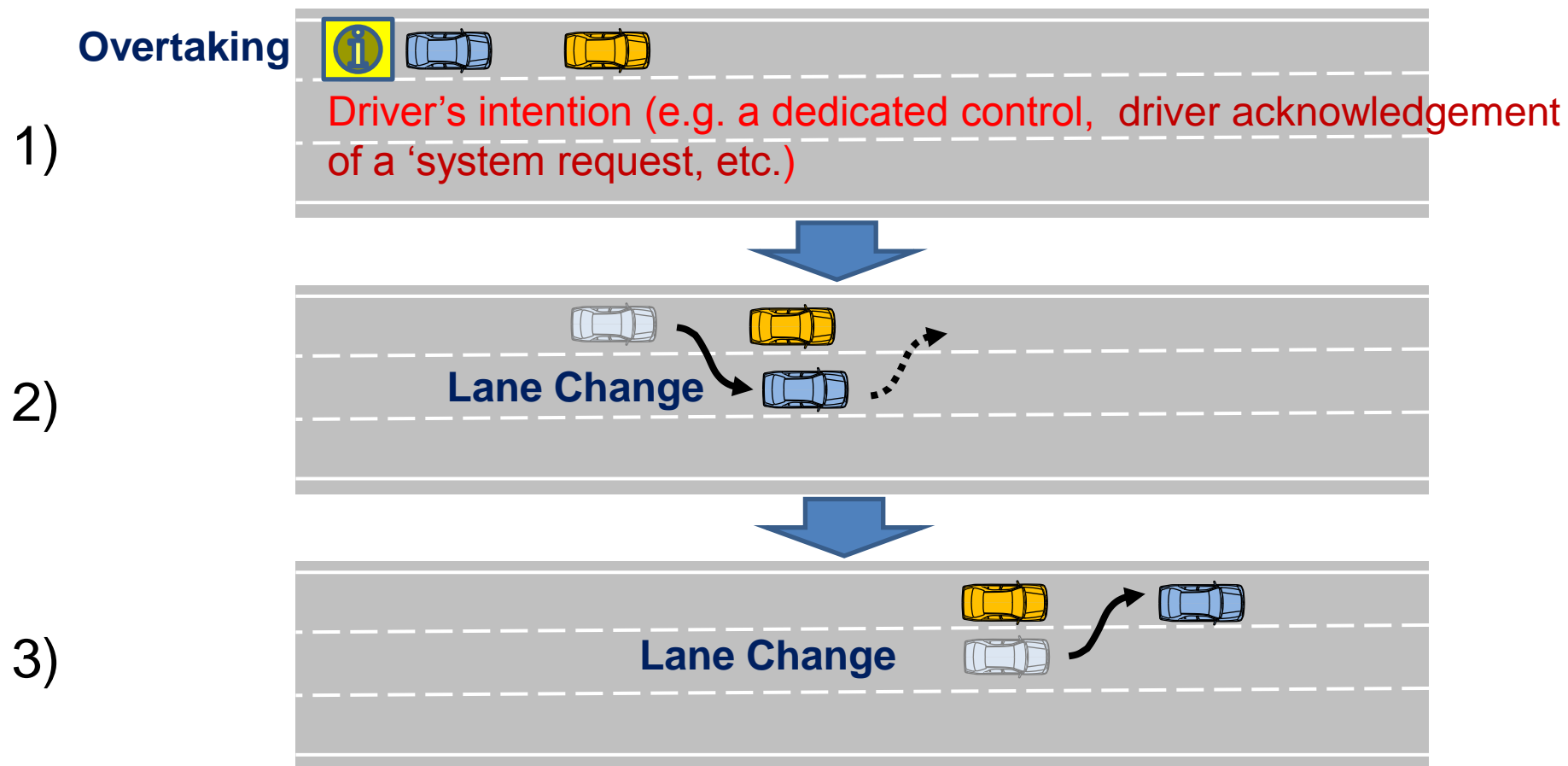
In Blue : by ACSF system

In Red : by the driver

4. LK & LC operation (combination) : In scope of ACSF informal group



5. overtaking operation as a sequence of LCs: In the scope of ACSF informal group

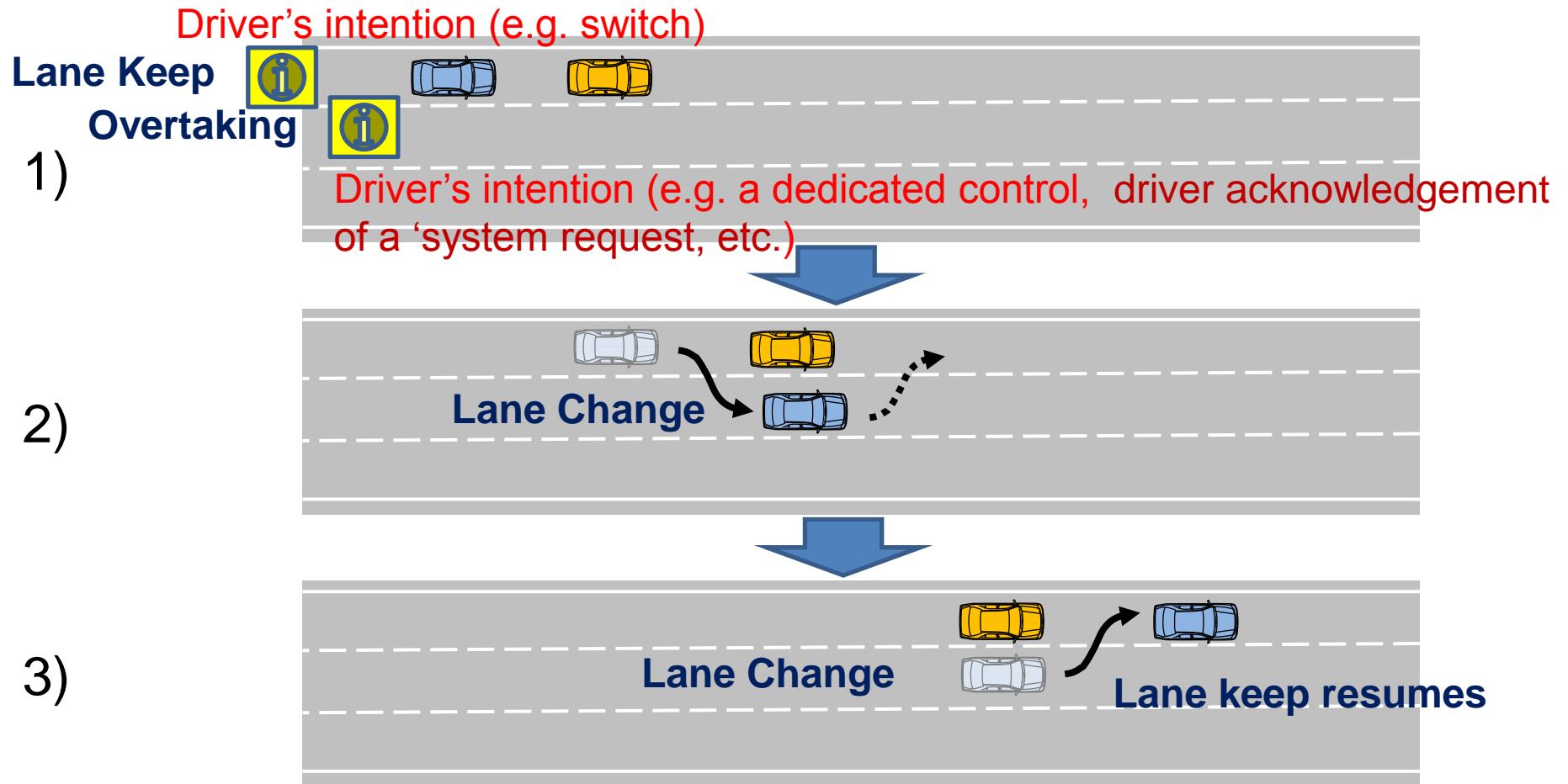


**Note: Initiated once, lane changed twice,
LK ON or OFF**

In Blue : by ACSF system

In Red : by the driver

6. LK & LC operation (combination) : In scope of ACSF informal group



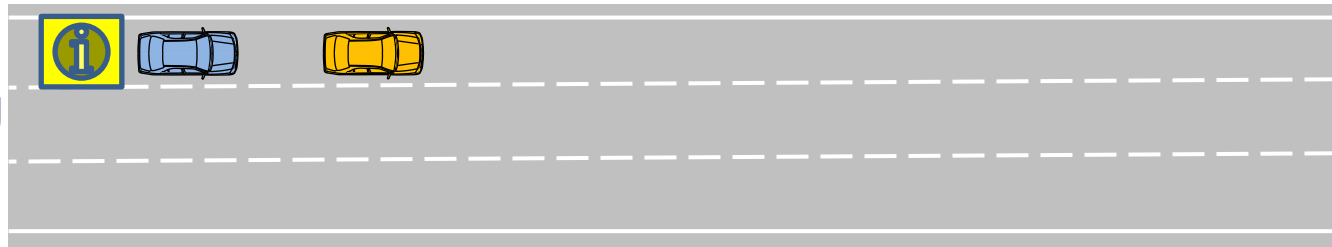
In Blue : by ACSF system

In Red : by the driver

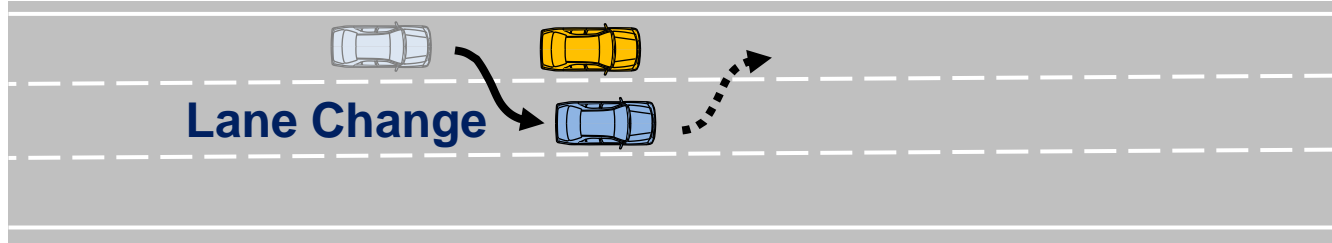
7. Auto-overtaking : In scope of ACSF informal group

Driver's intention
(e.g. Switch)
**Lane Keep +
auto overtaking**

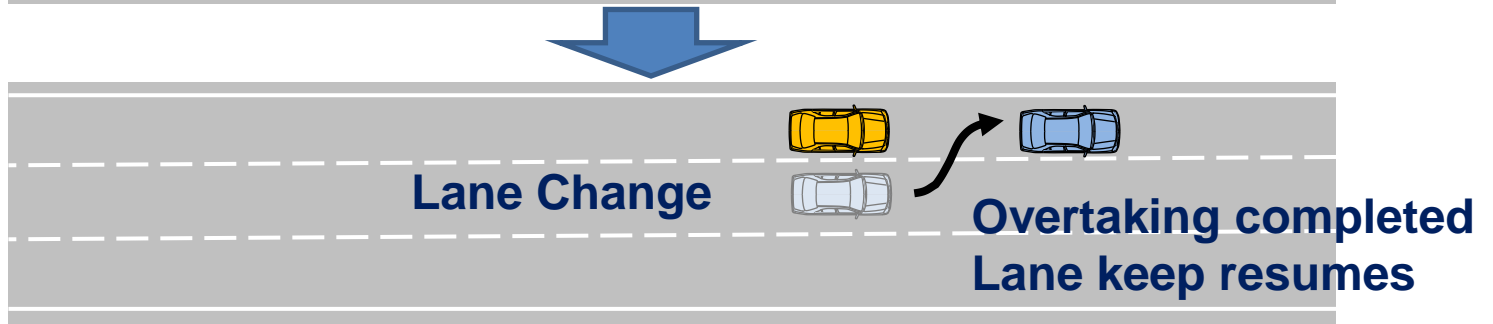
1)



2)



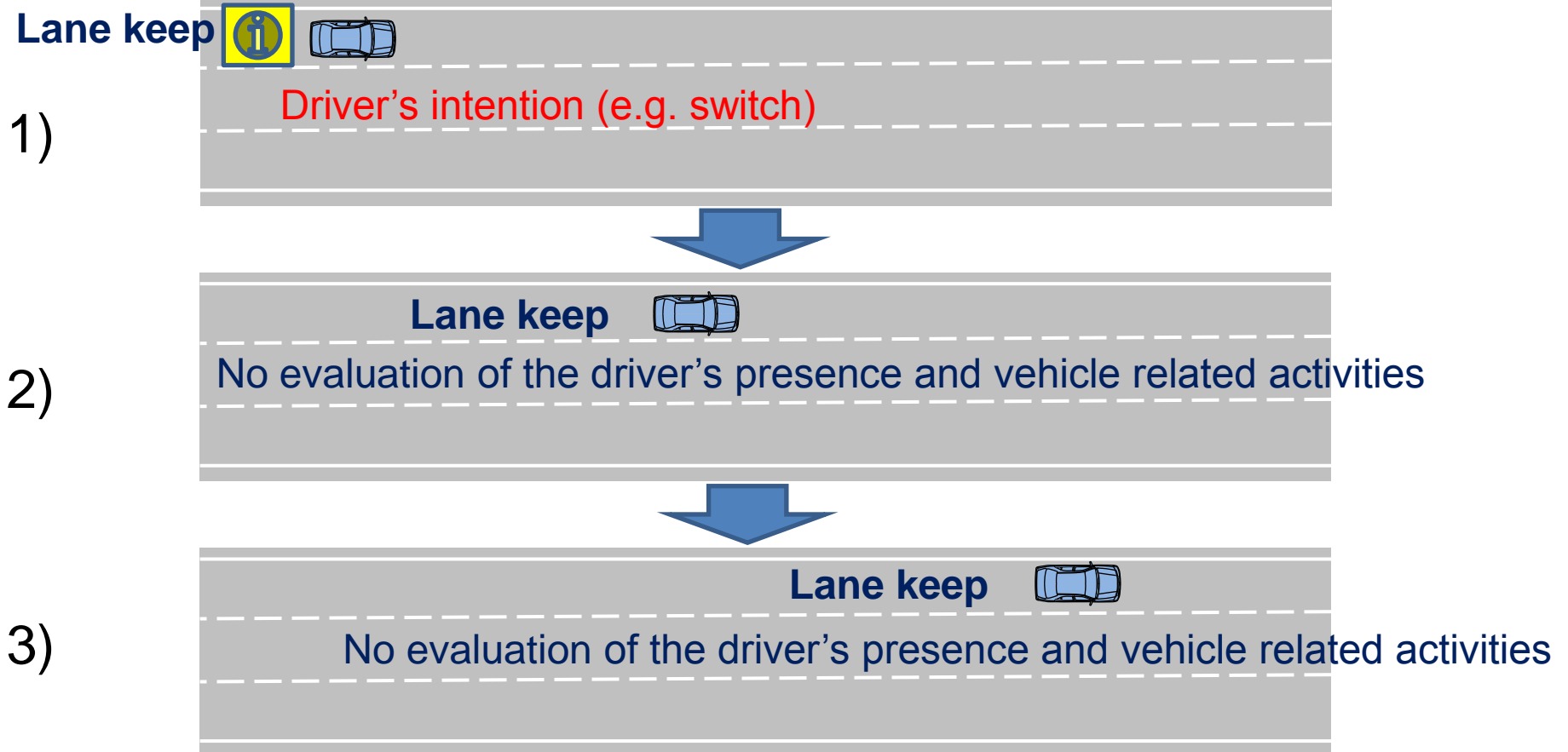
3)



In Blue : by ACSF system

In Red : by the driver

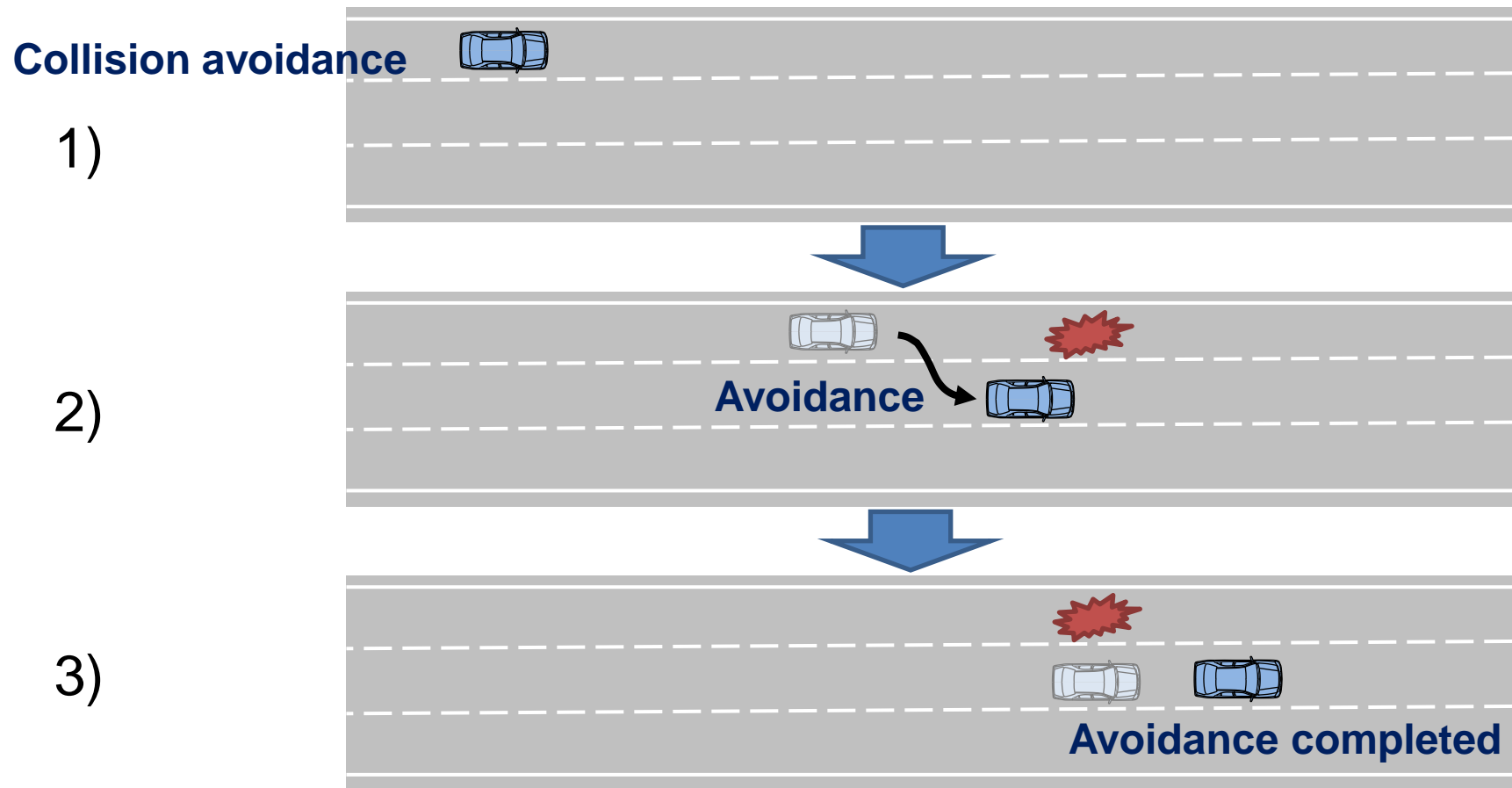
8. Lane keeping operation w/o driver evaluation: Out of scope of ACSF informal group



In Blue : by ACSF system

In Red : by the driver

9. Avoidance from collision: Out of scope of ACSF informal group?



Note: emergency situation should be discriminated from regular situation

In Blue : by system
In Red : by the driver