

Clarification of the Compatibility between the Vehicles and the CRSs, and Japan's concerns

52nd GRSP Informal Group on Child Restraint System

18th Jun. 2015

JASIC

Contents

- Clarification of the compatibility between ISOFIX positions or i-Size seating positions of the vehicles and Universal ISOFIX CRSs or Semi-universal ISOFIX CRSs or i-Size CRSs under the current situation
- Clarification of the compatibility between ISOFIX positions or i-Size seating positions or Universal booster seating positions of the vehicles and Lateral facing i-Size(?) CRSs or Universal booster seats under consideration
- Concerns about i-Size seating position or i-Size CRS
- Concerns about the proposal for lateral facing i-Size(?) CRS

Table of the compatibility between the vehicle and the ISOFIX CRS (current situation)

	fixture	ISOFIX position	i-Size seating position
R44 universal ISOFIX FF CRS with TT	ISO/F2orF2X	○	○
R44 semi-universal ISOFIX FF CRS with SL	ISO/F2orF2X	A	○(F2Xonly)
R44 semi-universal ISOFIX RF CRS with TT	ISO/R1or2or3	A	○ (R2 only)
R44 semi-universal ISOFIX RF CRS with SL	ISO/R1or2or3	A	○ (R2 only)
R44 semi-universal ISOFIX LF CRS with TT	ISO/L1,L2	A	A
R44 semi-universal ISOFIX LF CRS with SL	ISO/L1,L2	A	A
R129 i-Size FF CRS with TT	ISO/F2X	○	○
R129 i-Size FF CRS with SL	ISO/F2X	B	○
R129 i-Size RF CRS with TT	ISO/R2	B	○
R129 i-Size RF CRS with SL	ISO/R2	B	○

○ : approved for use

A : The CRS manufacturers provide consumers with the information that the CRS is suitable for fixing into the seat positions of the cars . (R44 6.1.3.7 and 15.2.2)

B : No guarantee as to the installation of CRS

Table of the compatibility between the vehicle and the ISOFIX CRS (idea of the amendment)

	fixture	ISOFIX position	i-Size seating position
R44 universal ISOFIX FF CRS with TT	ISO/F2orF2X	○	○
R44 semi-universal ISOFIX FF CRS with SL	ISO/F2orF2X	A	○(F2Xonly)
R44 semi-universal ISOFIX RF CRS with TT	ISO/R1or2or3	A	○ (R2 only)
R44 semi-universal ISOFIX RF CRS with SL	ISO/R1or2or3	A	○ (R2 only)
R44 semi-universal ISOFIX LF CRS with TT	ISO/L1,L2	A	A
R44 semi-universal ISOFIX LF CRS with SL	ISO/L1,L2	A	A
R129 i-Size FF CRS with TT	ISO/F2X	○	○
R129 i-Size FF CRS with SL	ISO/F2X	[C]	○
R129 i-Size RF CRS with TT	ISO/R2	[C]	○
R129 i-Size RF CRS with SL	ISO/R2	[C]	○

○: approved for use

A : The CRS manufacturers provide consumers with the information that the CRS is suitable for fixing into the seat positions of the cars . (R44 6.1.3.7 15.2.2)

[C : The CRS manufacturers provide consumers with the information that the CRS is suitable for fixing into the seat positions of the cars . (amendment of R129)]

Table of the compatibility between the vehicle and the Universal booster seat or the Lateral facing i-size(?) CRS (under consideration)

	fixture	ISOFIX positon	i-Size seating position (universal booster seating positon)
R44 booster seat	-	No check (seatbelt position)	Check (D) (Universal booster seating position(E))
R129 universal booster	F4	No check ? (same as R44 (?))	Check (Universal booster seating position(E))
R129 i-Size(?) LF CRS with TT	L1,L2	[C]?	F?
R129 i-Size(?) LF CRS with SL	L1,L2	[C]?	F?

[C: The CRS manufacturers provide consumers with the information that the CRS is suitable for fixing into the seat positions of the cars .]

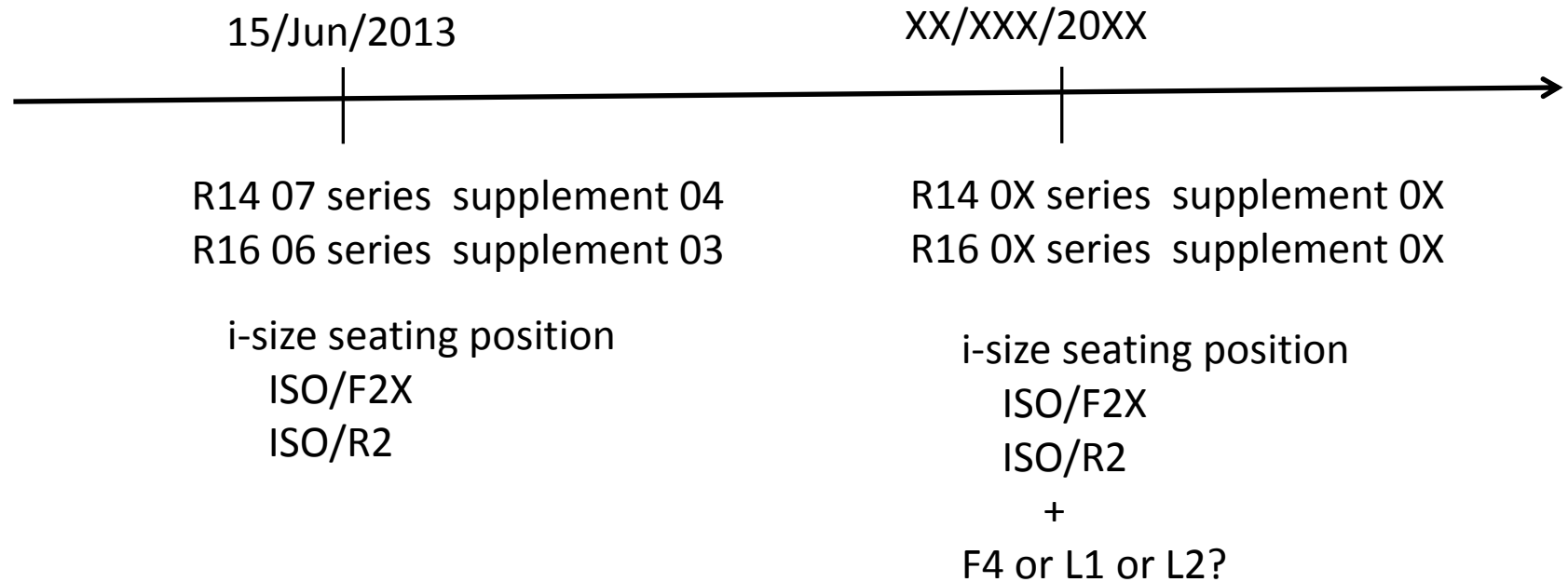
D : Checked in the case of boosters whose size is F4 or below

E : The mark of the Universal booster seating position not necessary?

F : “i-size” or “i-size compatible “or other?

If “i-size compatible” or other, how should it be defined?

Concern about “i-Size seating position”



As regards the current i-Size seating position, the installation of ISO/F2X and ISO/R2 fixtures is checked, after 15th/June/2013.

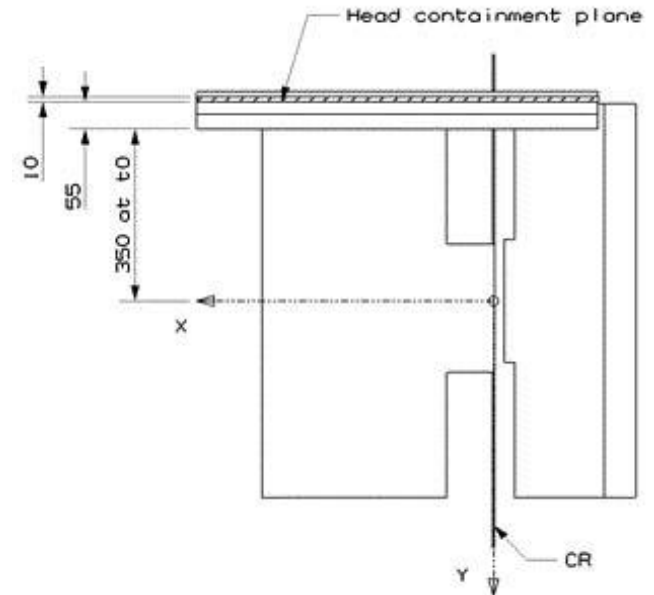
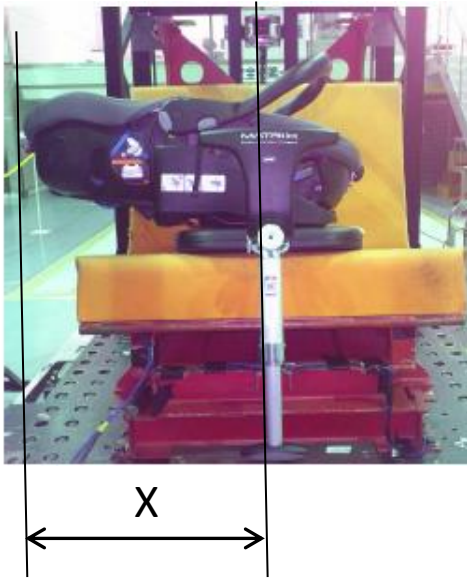
If the R14 and R16 will be amended that the installation of ISO/F2X, ISO/R2 and “F4 or L1 or L2” fixtures will be checked for the i-Size seating position, the cases that the same “i-Size seating position” is used as though the checked fixture sizes are different, will be occurred.

This is likely to cause confusion to consumers.

The criteria of the Lateral facing i-size(?) CRS in the lateral impact tests

R129 lateral impact test method

For lateral facing child restraint systems in lateral impact, if two positions are possible, then the dummy's head shall be situated near the side door.



- If $X > Y$, the occupant's head in lateral facing CRSs cannot be situated near the side door.
- If $X < Y$, the occupant's head in lateral facing CRSs can be situated near the side door.
- The value of Y varies depending on vehicle. How should it be evaluated?
- How to evaluate the case that the lateral facing CRS is installed in the center of the rear seat?

Japan's concerns about R129

- The CRS manufacturers are obligated to supply information to consumers that the i-Size CRSs are suitable for fixing into the ISOFIX positions of the cars in the R129.
- If the new i-size fixtures are added, what to do to deal with the differences between the already the checked fixture's sizes and the revised ones ? (Possible to cause confusions to consumers)

Japan's concerns about the proposal for Lateral facing i-size(?) CRS

- Is the lateral facing i-size(?) CRS possible to install into the i-size seating position of the front passenger seat?
- The criteria is necessary for evaluating the head position during the lateral impact test.
- If “i-size compatible” or other is newly created, it needs a clear definition.