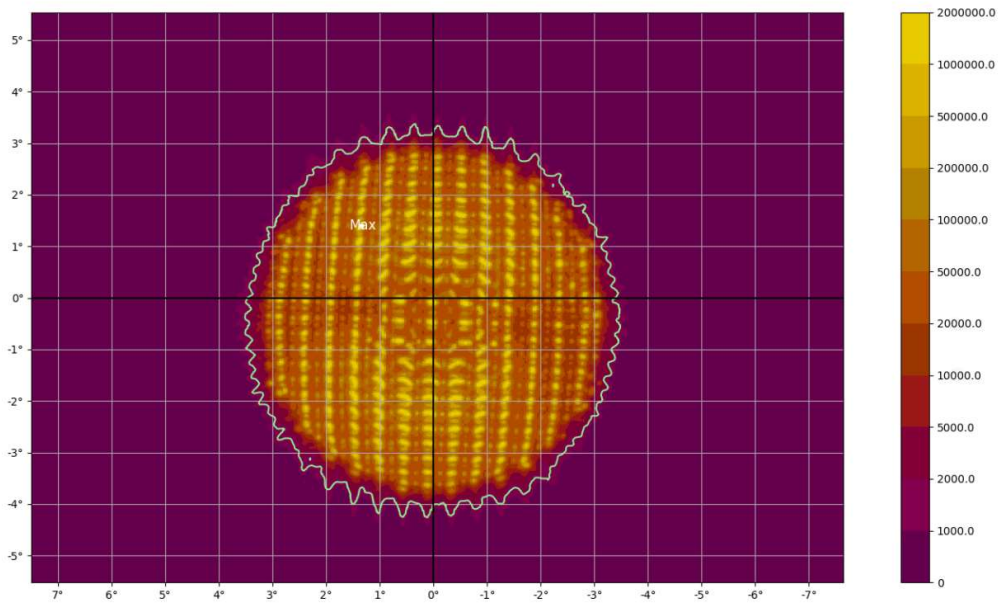
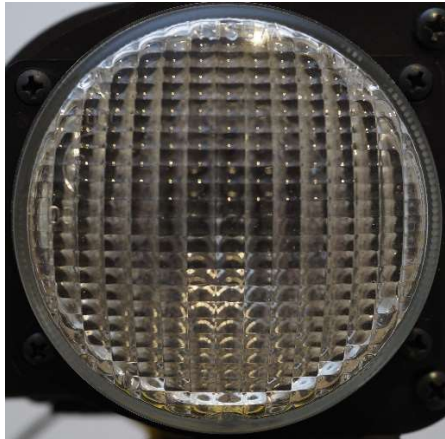
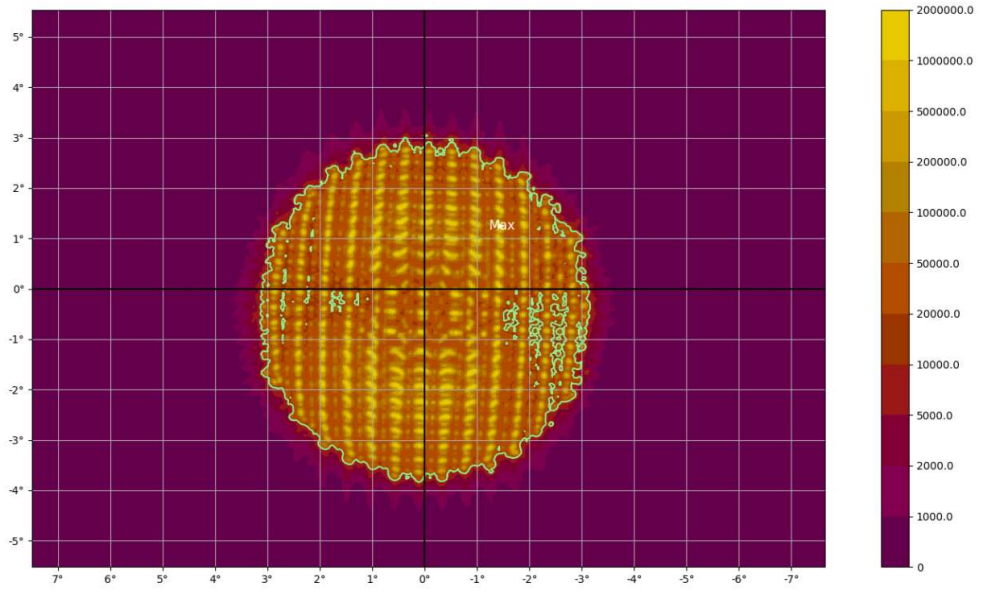


EXAMPLES OF LIGHT EMMITTING SURFACE BY LUMINANCE MEASUREMENTS

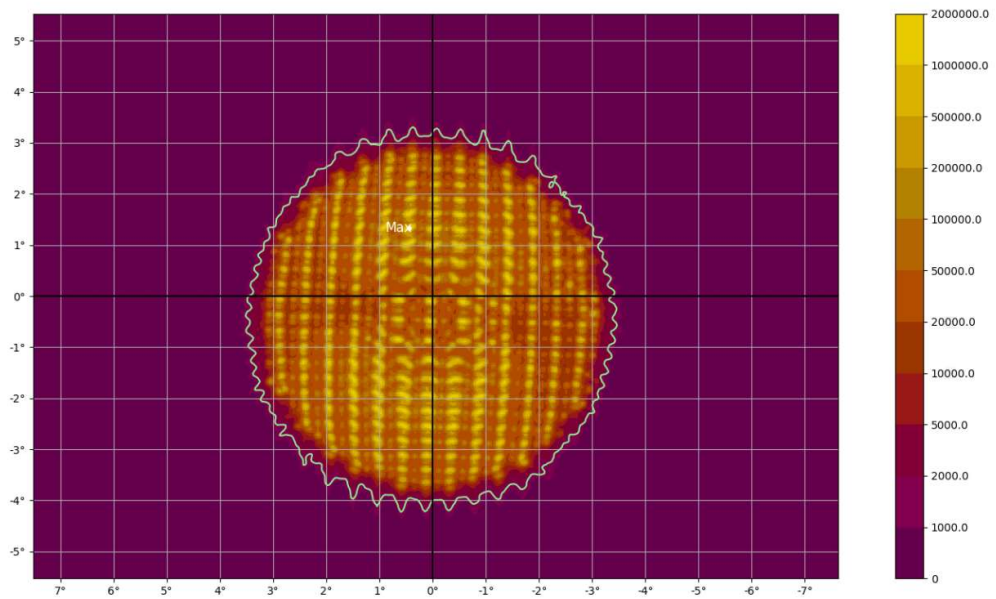
DRL with classic bulb



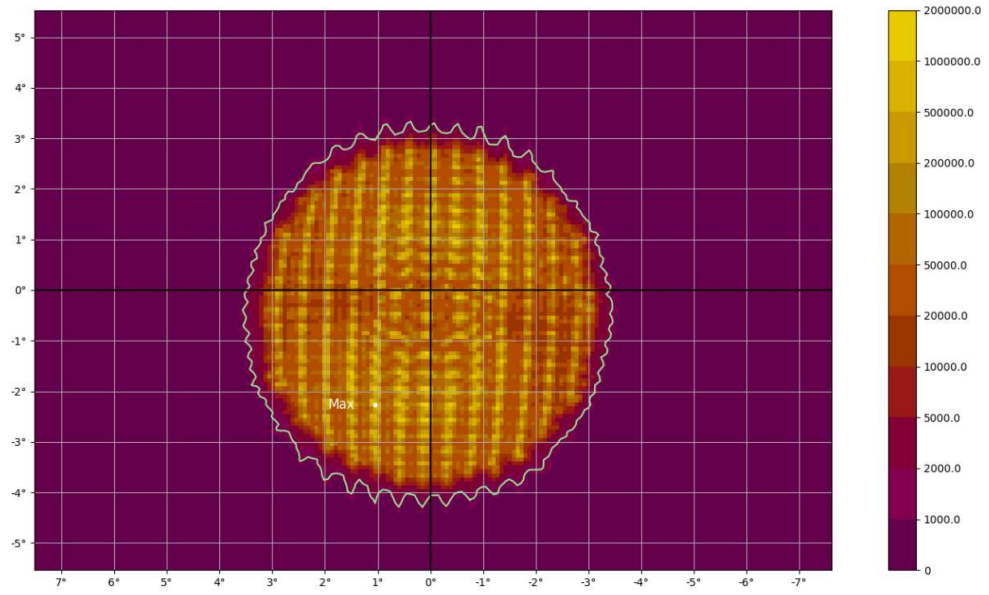
Surface border (light green line) at 0.001 (1‰) of max luminance (1580 kcd/m²),
max camera resolution
Linear dimensions at the lamp body (1° means 1 cm)



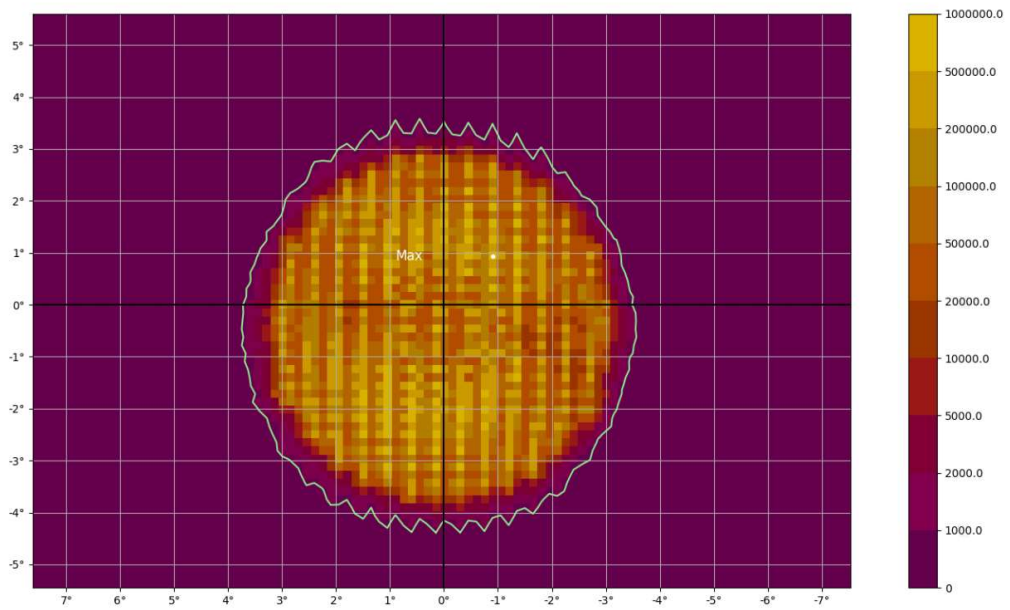
Surface border at 0.01 (1%) of max luminance (1580 kcd/m²), max camera resolution



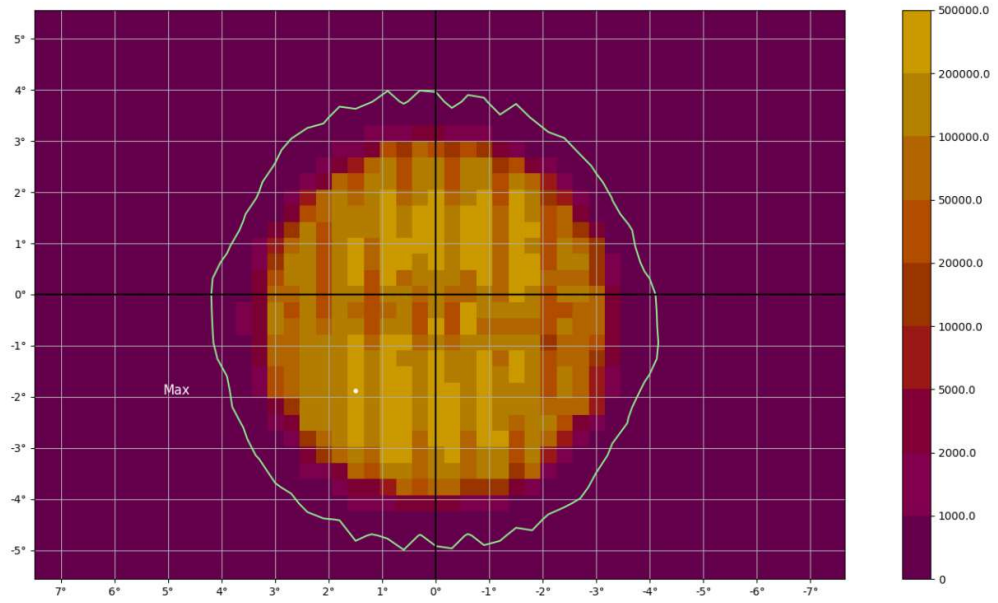
Surface border at 0.001 (1‰) of max luminance (1490 kcd/m²), reduced resolution (pixel 0.35 mm)



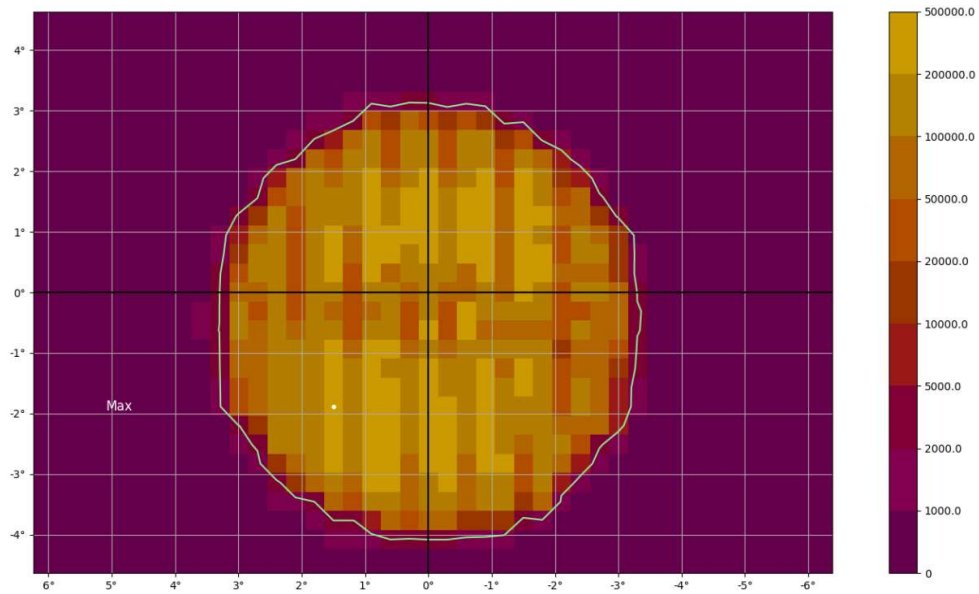
Surface border at 0.001 (1‰) of max luminance (1320 kcd/m²), reduced resolution (pixel 0.7 mm)



Surface border at 0.001 (1‰) of max luminance (740 kcd/m²), reduced resolution (pixel 1.5 mm)

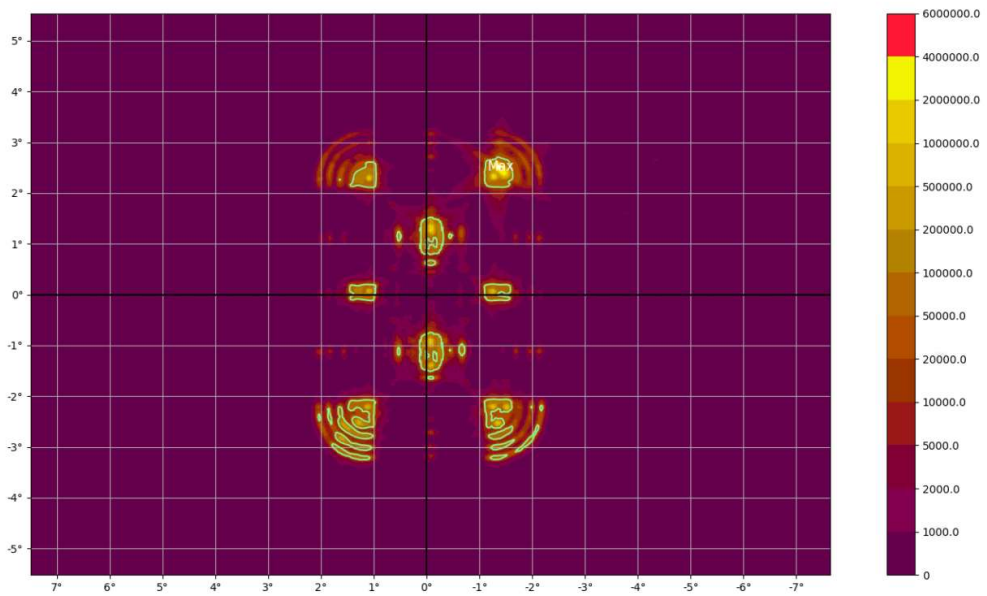
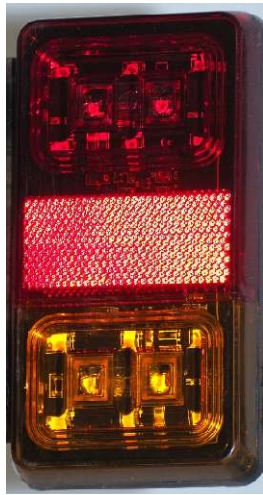


Surface border at 0.001 (1%) of max luminance (410 kcd/m²), reduced resolution (pixel 3 mm)
 Visible effect of max luminance reduction and lamp edge smearing

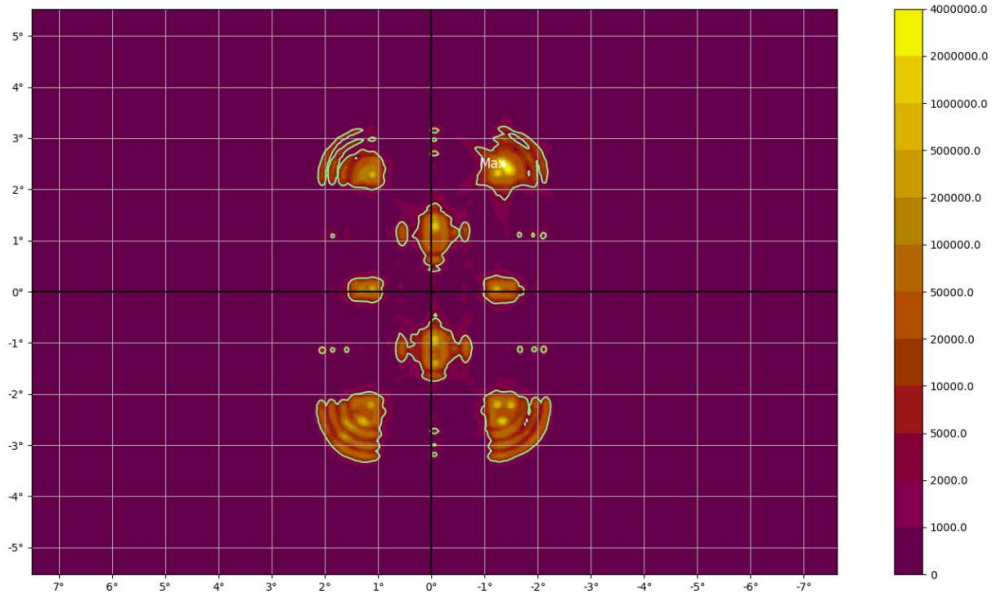


Surface border at 0.01 (1%) of max luminance (410 kcd/m²), reduced resolution (pixel 3 mm)
 Visible effect of lamp edge smearing

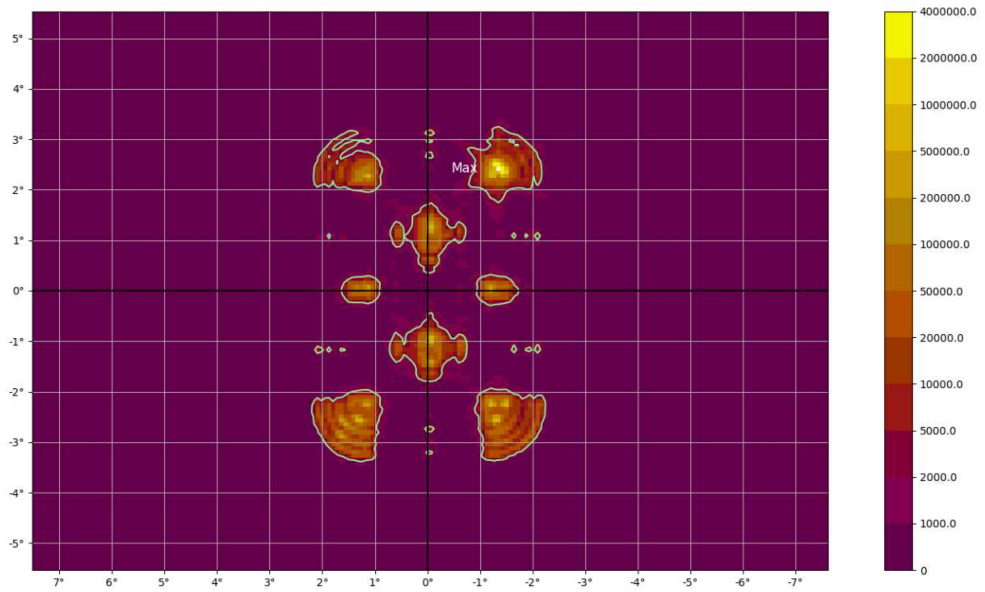
UNIVERSAL REAR LAMP of 2 x 8 single LED-s with "textured" lens



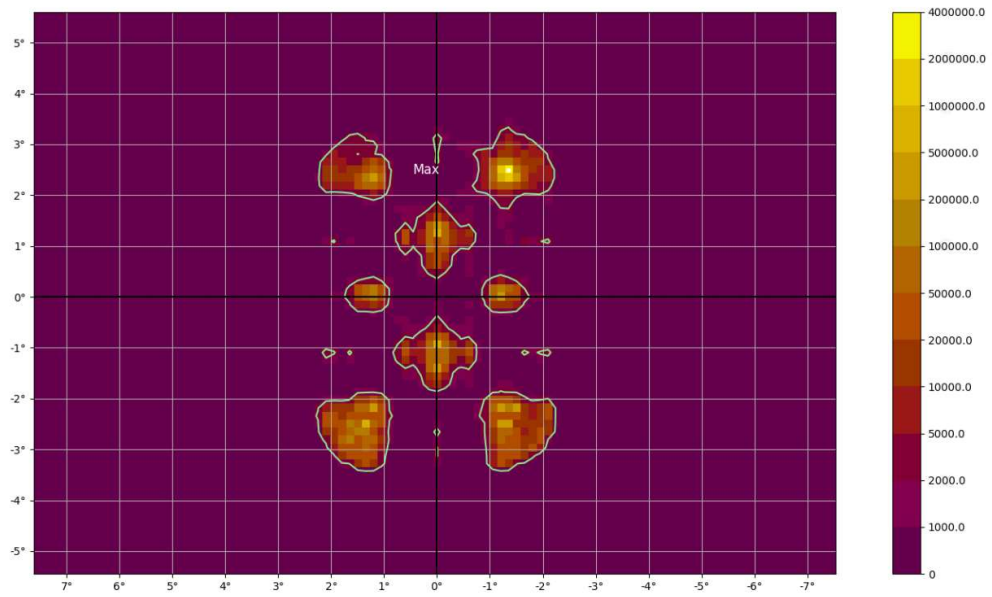
STOP LAMP. Surface border (light green line) at 0.01 (1%) of max luminance (3420 kcd/m^2),
Max camera resolution. Linear dimensions at the lamp body (1° means 1 cm)



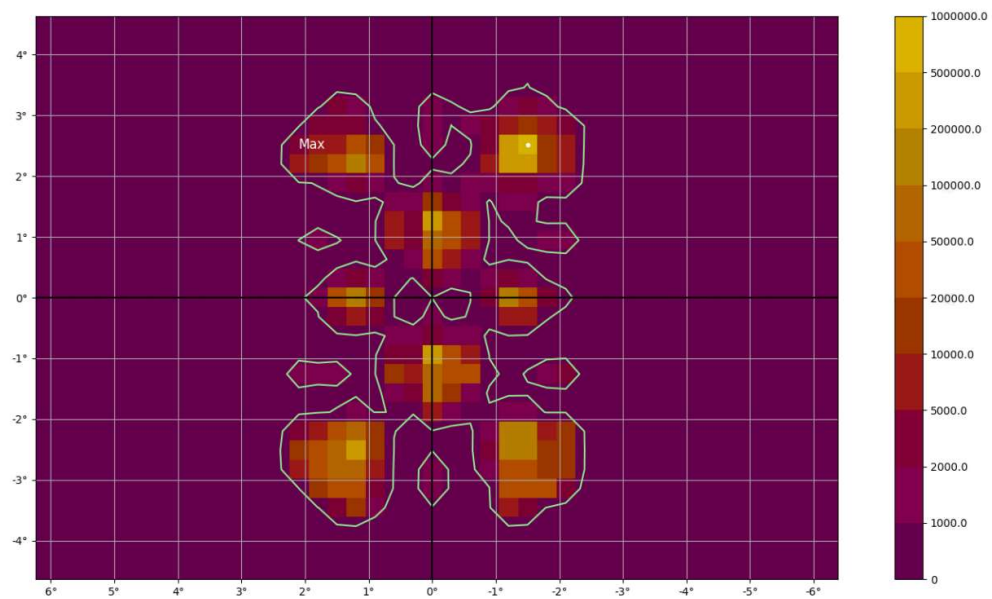
Surface border at 0.001 (1‰) of max luminance (3420 kcd/m²), max camera resolution



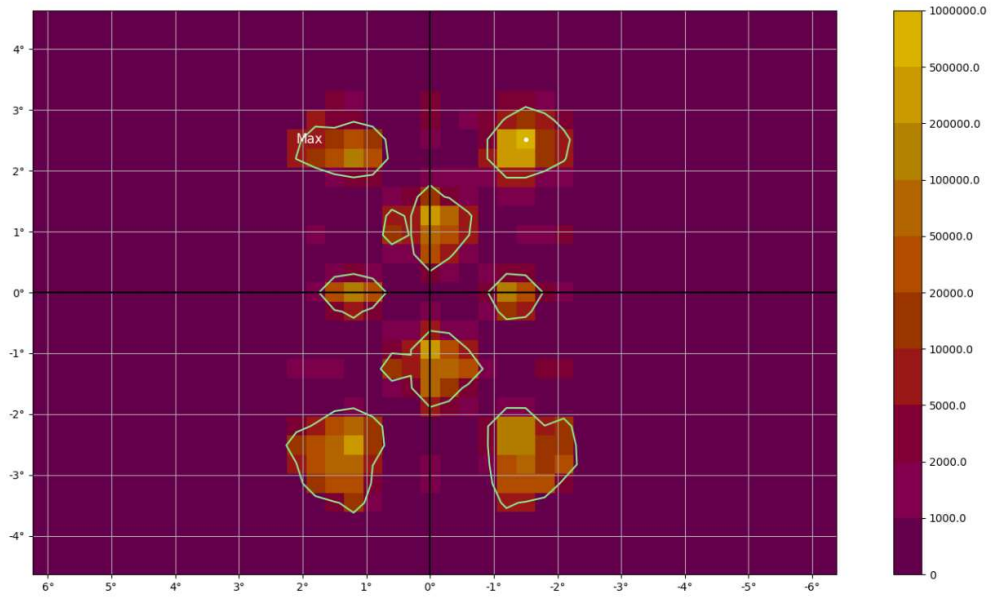
Surface border at 0.001 (1‰) of max luminance (2890 kcd/m²), reduced resolution (pixel 0.7 mm)



Surface border at 0.001 (1%) of max luminance (1820 kcd/m²), reduced resolution (pixel 1.5 mm)

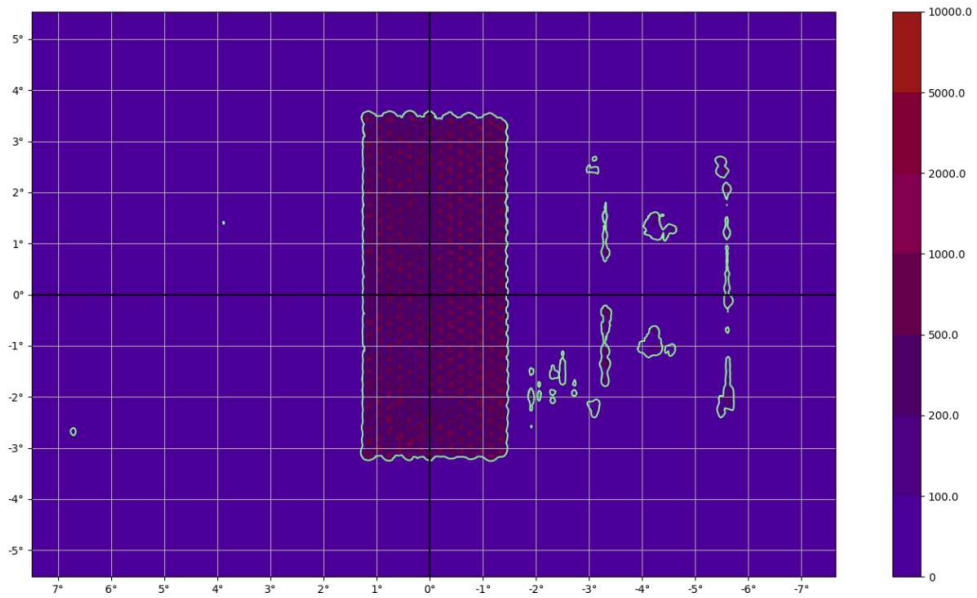


Surface border at 0.001 (1%) of max luminance (720 kcd/m²), reduced resolution (pixel 3 mm).
Visible effect of max luminance reduction and lamp edge smearing



Surface border at 0.01 (1%) of max luminance (720 kcd/m²), reduced resolution (pixel 3 mm)
 Visible effect of max luminance reduction and lamp edge smearing

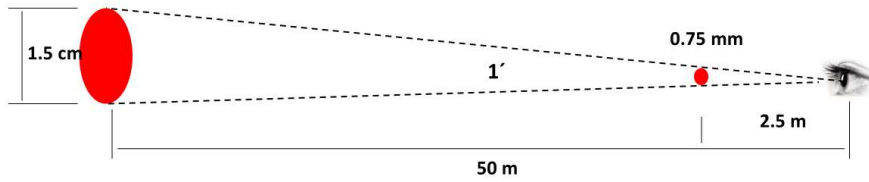
Retroreflector



Luminance depend on illumination

The minimum geometric size of lamp visible part in relation the visual acuity:

1' - very sharp; 3' - typical; 10' - boundary



Suggested luminance measurements resolution 0.75 mm pixel size

