

Proposal

5.1.3.9. The flexible hoses and cables used for the connection between a towing vehicle for semi-trailer (*i.e. a tractor, a link-trailer, a dolly...*) and its following semi-trailer shall be part of the towing vehicle.

The flexible hoses and cables used for the connection between a towing vehicle for trailer other than a semi-trailer (*i.e. a rigid truck, an A-semi, a centre-axle trailer...*) and its following trailer (*i.e. a dolly, a centre-axle trailer...*) shall be part of the trailer.”

Explanation

Vehicle combination 1

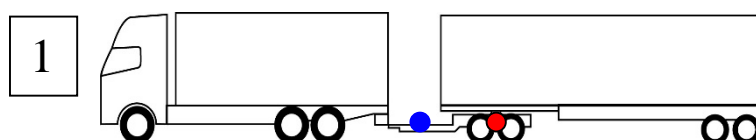


Figure 2 — truck + dolly + A-semi

Vehicle combination 2

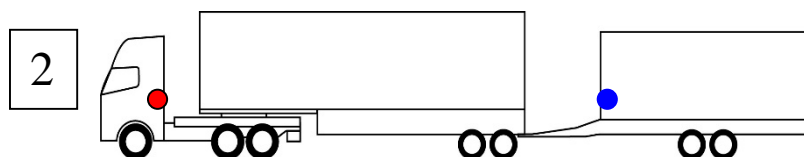


Figure 3 — tractor + A-semi + centre axle trailer

Vehicle combination 3

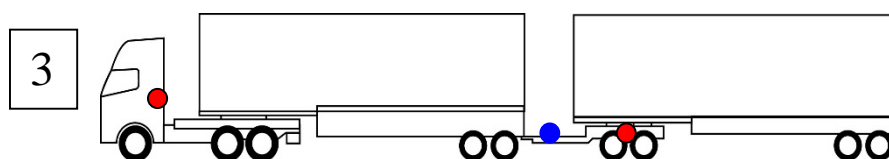


Figure 4 — tractor + A-semi + dolly + A-semi

Vehicle combination 4

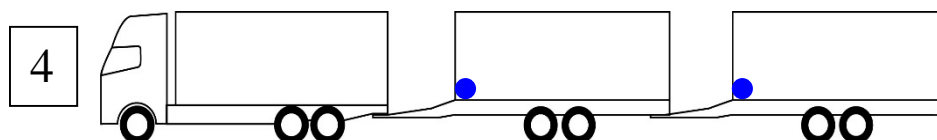


Figure 5 — truck + centre axle trailer + centre axle trailer

Vehicle combination 5

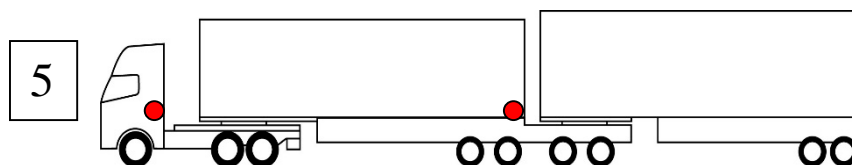


Figure 6 — tractor + link-trailer + A-semi (B-train)