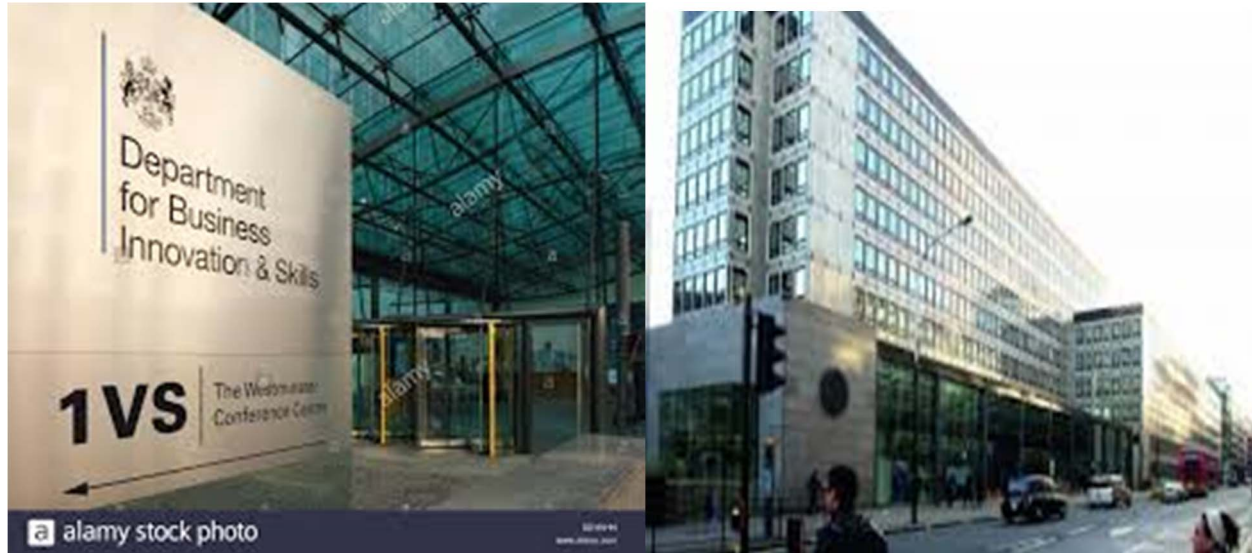


7th ACSF informal meeting

28-30 June 2016

To be held in the Conference Centre of the Department for
Business, Innovations and Skills (BIS)
1 Victoria Street, London, SW1H 0ET

Venue details



Address: BIS Conference Centre, 1 Victoria Street, London, SW1H 0ET

Telephone for BIS switchboard (within UK): 020 7215 5000 (from abroad): +44 20 7215 5000

Google map link: <https://www.google.co.uk/maps/place/Westminster,+London+SW1H+0ET/@51.4989473,-0.1328774,17z/data=!3m1!4b1!4m2!3m1!1s0x487604dc9962d79d:0xb5c0c6aaccb9c39>

Local travel links

London Underground stations: St James's Park (5 minutes' walk), Westminster (7 minutes' walk)

Victoria (15 minutes' walk), Pimlico (15 minutes' walk)

Buses from Victoria station: routes 11, 24, 148 or 211 stop opposite the BIS building on Victoria Street

Travel to the venue from airports

From Heathrow Airport

London Underground: Piccadilly Line to South Kensington, then change to the District Line or Circle Line (Eastbound) for Victoria, St James's Park or Westminster. Approximate travel time – 50 minutes. <https://tfl.gov.uk/modes/tube/>

Heathrow Express train: 4 trains run every hour non-stop to Paddington station, change there to the London Underground Circle Line for Victoria, St James's Park or Westminster. Approximate travel time – 50 minutes. <https://www.heathrowexpress.com>

From Gatwick Airport

Gatwick Express train: 4 trains run every hour non-stop to Victoria station. Approximate travel time – 30 minutes. <http://www.gatwickexpress.com>

Southern trains: Services run with intermediate stops to Victoria station. Approximate travel time – 33 minutes. <http://www.southernrailway.com>

From City Airport

Docklands Light Railway: Travel on the Westbound service to Canning Town station, change there to the London Underground Jubilee Line (Westbound) for Westminster. Approximate travel time – 25 minutes. <https://tfl.gov.uk/modes/dlr/>

From Luton Airport

Thameslink train: Services run from Luton Airport Parkway station with intermediate stops to St Pancras International station, change there to the London Underground Victoria Line (Southbound) for Victoria or Pimlico. Approximate travel time – 55 minutes. <http://www.thameslinkrailway.com>

National Express coach: Service A1 connects to Victoria station. Approximate travel time – 1 hour 15 minutes. <http://www.nationalexpress.com/en/airports/luton-airport.aspx>

From Stansted Airport

Stansted Express train: 4 trains run every hour non-stop to Tottenham Hale station, change there to the London Underground [Victoria Line](#) (Southbound) for Victoria or Pimlico. Approximate travel time – 1 hour 10 minutes.

<https://www.stanstedexpress.com>

National Express coach: Service A7 connects to Victoria station. Approximate travel time – 1 hour 30 minutes.

<http://www.nationalexpress.com/en/airports/stansted-airport.aspx>

Travel to the venue from Eurostar (St Pancras International)

Eurostar services arrive at St Pancras International station from Paris and Brussels. From St Pancras International, change to the London Underground [Victoria Line](#) (Southbound) for Victoria or Pimlico. Approximate travel time – 10 minutes.

Further information on travelling within London

Paying for travel on public transport within London: <https://tfl.gov.uk/fares-and-payments/ways-to-pay>

London Underground station map (also showing Travelcard zones): <http://content.tfl.gov.uk/standard-tube-map.pdf>

A selection of hotels near the venue

NAME & STAR RATING	ADDRESS	WEBSITE	TYPICAL PRICE (PER NIGHT)
St James' Court, A Taj ****	45-51 Buckingham Gate, SW1E 6AF	http://www.stjamescourthotel.co.uk/	£280
Grange Wellington Hotel ****	71 Vincent Square, SW1P 2PA	https://www.grangehotels.com/hotels-london/grange-wellington/about-this-hotel/	£260
Grange Rochester Hotel ****	69 Vincent Square, SW1P 2PA	https://www.grangehotels.com/hotels-london/grange-rochester/about-this-hotel/	£210
Sanctuary House Hotel ****	33 Tothill Street, SW1H 9LA	http://www.sanctuaryhousehotel.co.uk/	£210
Double Tree by Hilton – Westminster ****	30 John Islip Street, SW1P 4QP	http://doubletree3.hilton.com/en/hotels/united-kingdom/doubletree-by-hilton-hotel-london-westminster-LONWMDI/index.html	£200
The Belgrave Hotel ***	80-86 Belgrave Road, SW1V 2BJ	http://www.the-belgrave.com/Home	£130
St Georges Inn Victoria ***	25 Belgrave Road, SW1V 1RB	http://www.stgeorgesinnvictoria.co.uk/	£130
Lidos Hotel ***	43-45 Belgrave Road, SW1V 2BB	http://lidoshotel.com/index.html	£130
Melbourne House Hotel ***	79 Belgrave Road, SW1V 2BG	http://www.melbournehousehotel.co.uk/	£120

Melita House Hotel ***	35 Charlwood Street, SW1V 2DU	http://www.melita-house-hotel.resthotel.co/	£95
Victoria Inn London ***	65-67 Belgrave Road, SW1V 2BG	http://www.victoriainn.co.uk/	£90
Blades Hotel ***	122 Belgrave Road, SW1V 2BL	www.blades-hotel.co.uk	£85
Sidney London Victoria **	68-76 Belgrave Road, SW1V 2BP	http://www.sidneyhotel.com/	£110
Dover Hotel **	44 Belgrave Road, SW1V 1RG	http://www.dover-hotel.co.uk/	£100
Chester Hotel Victoria **	27-29 Longmoore Street, SW1V 1JQ	http://www.chesterhotelvictoria.com/	£100
Surtees Hotel **	94 Warwick Way, SW1V 1SB	http://www.surtees-hotel.co.uk/	£85
Blair Victoria Hotel **	78-84 Warwick Way, SW1V 1RZ	http://www.blairvictoria.com/	£70
Belle Cour Hotel *	4 Upper Tachbrook Street, SW1V 1SH	http://www.laterooms.com/en/hotel-reservations/246750_belle-cour-westminster-london.aspx	£100
Romano's Hotel *	31 Charlwood Street, SW1V 2DU	http://romanoshotel.co.uk/	£70
Corbigoe Hotel *	101 Belgrave Road, SW1V 2BH	http://www.corbigoehotel.com/	£55
Belgrave House Hotel *	28-32 Belgrave Road, SW1V 1RG	http://www.belgravehousehotel.com/	£50

Before you travel to the venue...

Please send the following registration information to:

Mr Jochen Schaefer (Jochen.Schaefer@de.bosch.com)

Mr Mike Lowe (Mike.Lowe@dft.gsi.gov.uk)

no later than **10 June 2016**

*(**If you do not notify us, you may not be allowed into the building**)*

- 1) Your name
- 2) Your job title and the name of the organisation you are representing
- 3) Your e-mail address
- 4) Your arrival and departure date (if you are not taking part for the full schedule)

Look forward to seeing you in London!