

# UMTRI dynamic test procedure



# Target

- Effect of UMTRI test installation methods on Booster seats in regulation 129 environment

# UMTRI Test Method

- 15 N loads are applied in lap and diagonal belts instead of 50 N.
- A spacer is positioned in the back of the dummy :

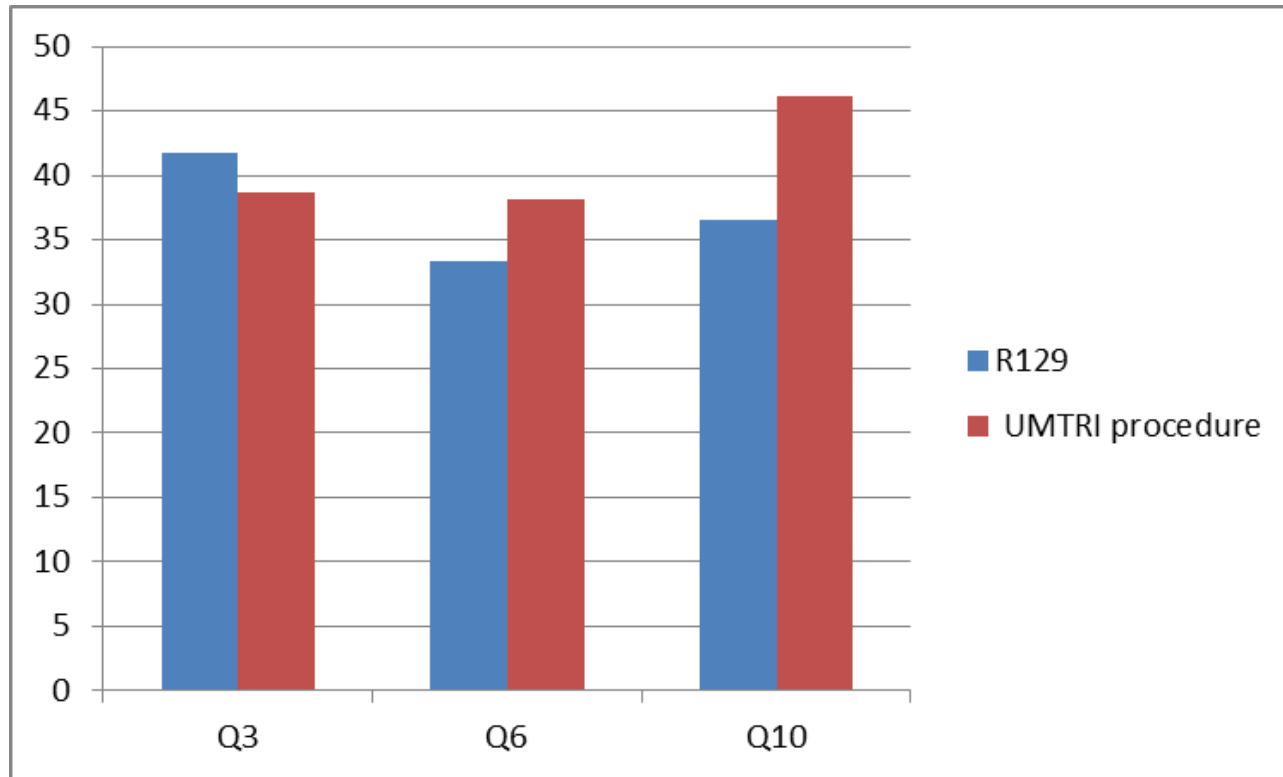


# Tests Conditions

- Tests realized with Q3, Q6 and Q10 with a R44 booster CRS
- Prototype Hip liners are used in the dummies
- Abdominal sensors are implemented in drilled Q dummies abdomen

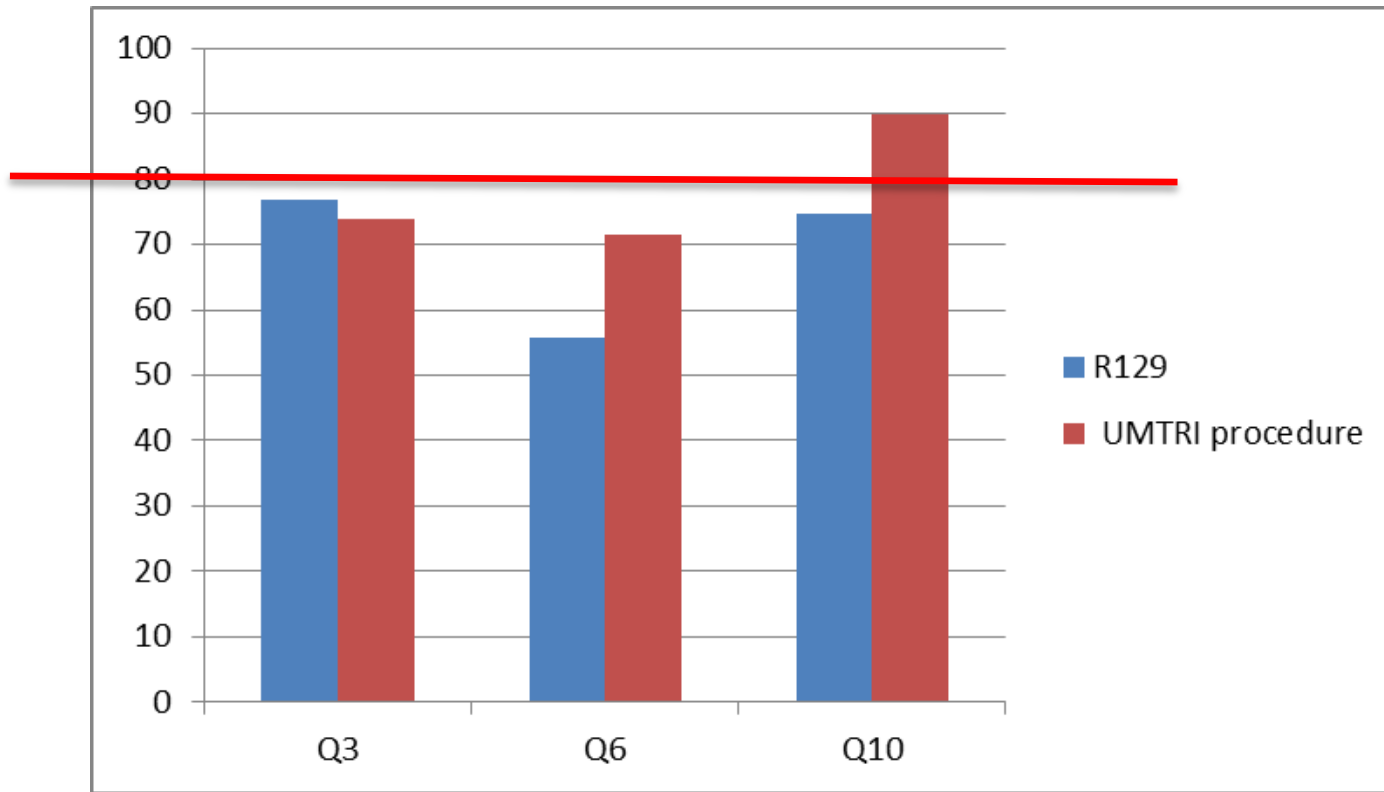
# Results

## Chest Acceleration (g)



# Results

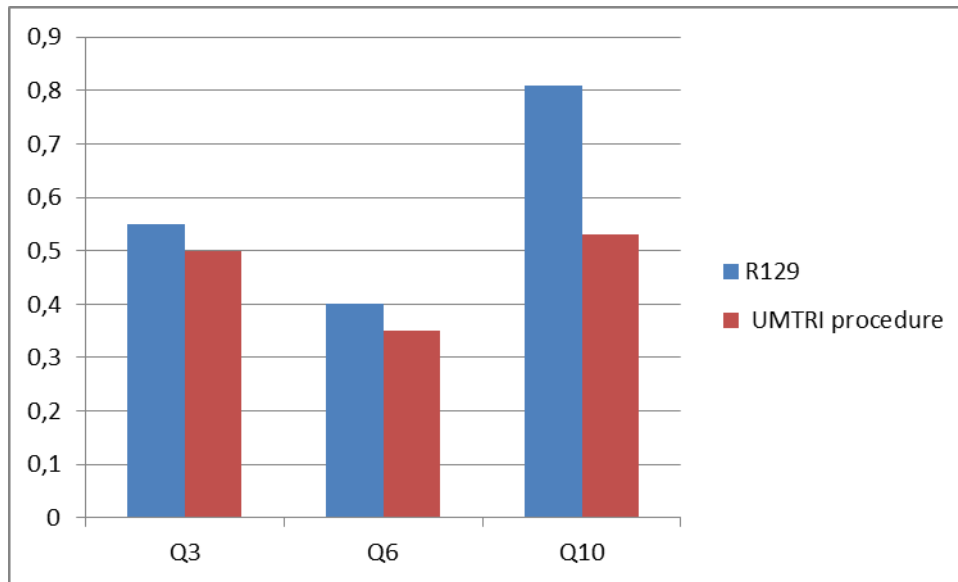
## Head Acceleration (g)



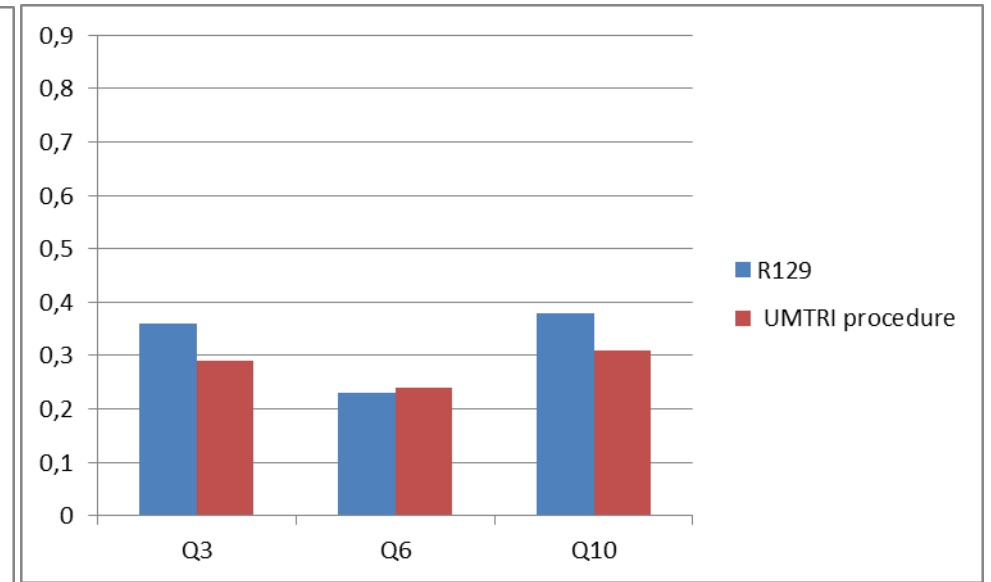
# Results

## Abdominal Pressure (bar)

Left



Right



# Conclusion

- With the CRS tested, UMTRI procedure provokes important increase of Head acceleration for Q6 and Q10 (+ 15 g).
- No important change for others criteria





# Care for Precious Life

You can  
change this  
grey field  
into another  
picture