

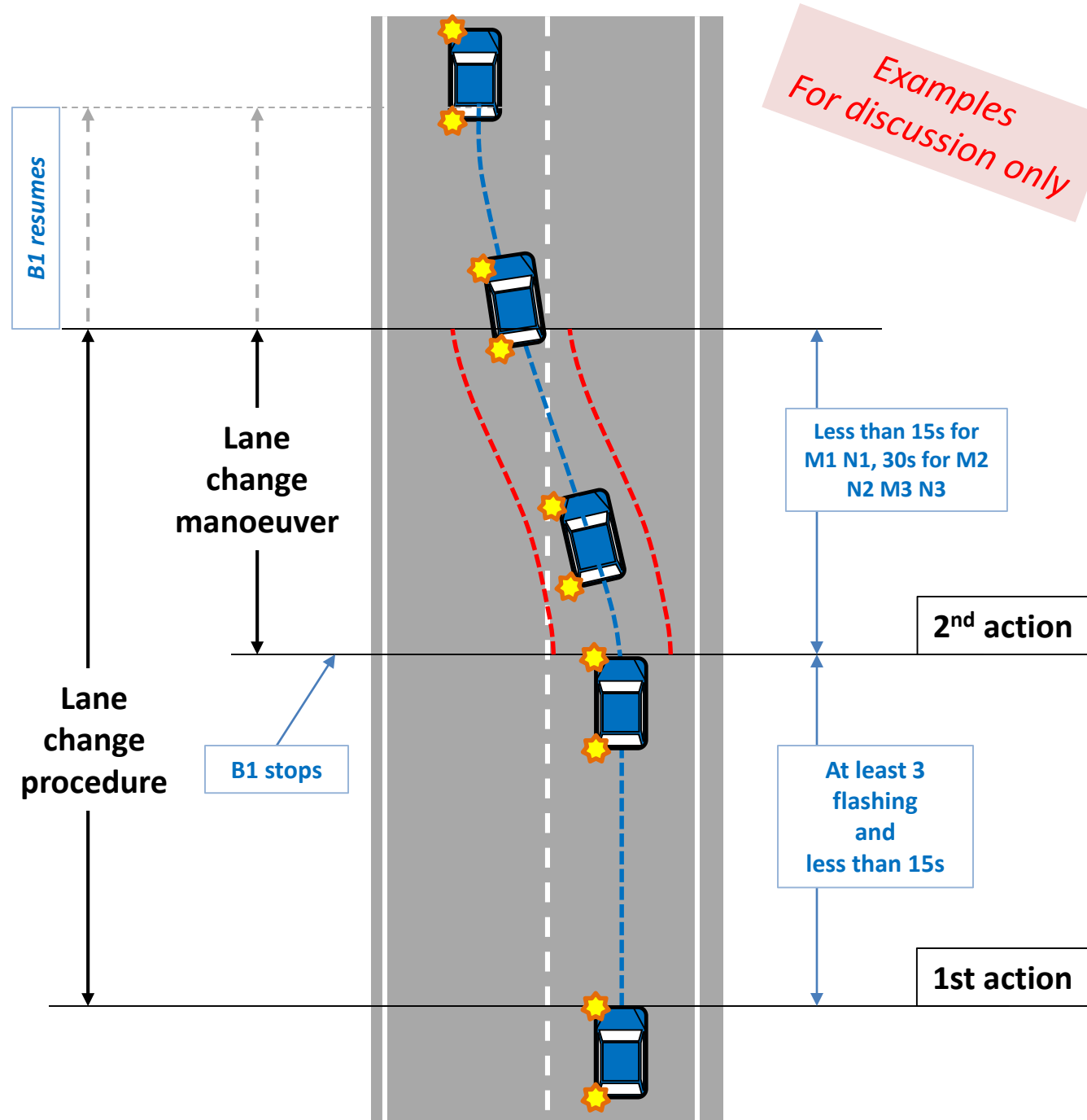
10th ACSF meeting

Paris, 11.-13. January 2017

ACSF B1+C
functional
description

ACSF B1+C functional description

During the lane change, the driver steers between **virtual lane markings**, which are defined to deliver a smooth and stable lane change.



ACSF B1+C functional description

During the lane change, the driver steers between **virtual lane markings**, which are defined to deliver a smooth and stable lane change.

The vehicle slightly **drifts in the lane** to improve rearward visibility. Yet, this is not the start of the lane change manoeuvre.

