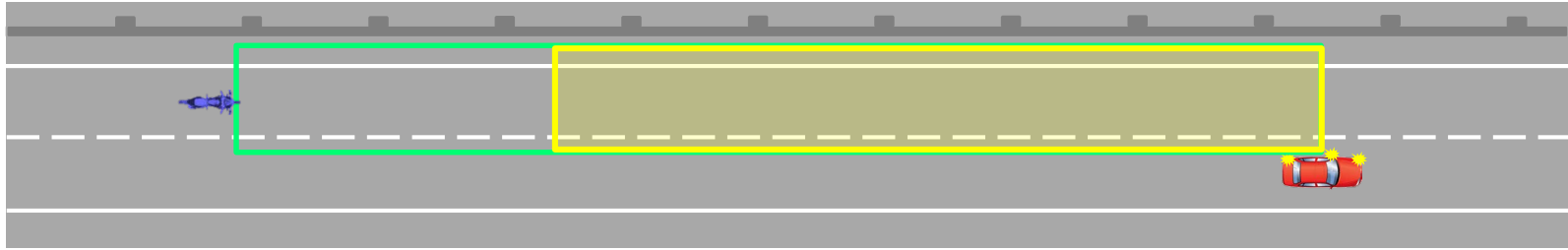


ACSF - Category C1

Definition of Sensor range and safety distances

Category C1 requirements and working principles

Sensor ranges / safety distances: definitions, requirements & testing



□ Sensor range (testing) □ Cut off area

Sensor range (testing)

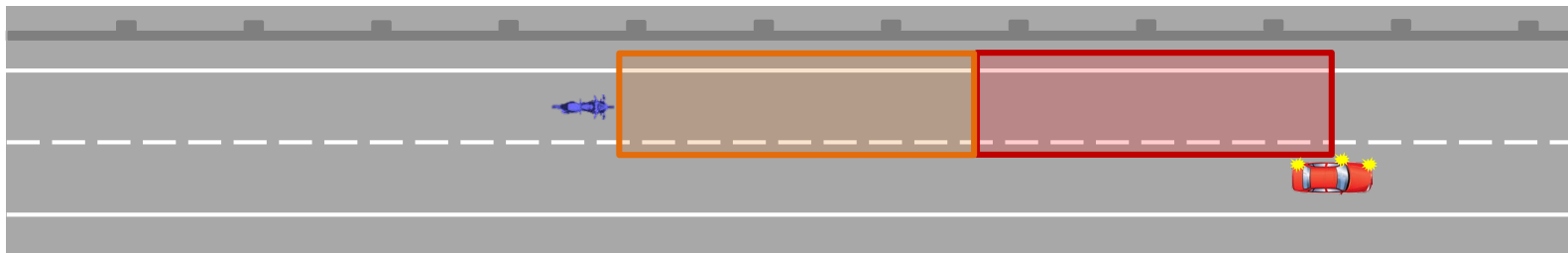
- Sensor performance test for detection range
- Specified in TA test

Cut off area

- If sensor cannot ensure detection in the defined range, LCF has to be cut off

Category C1 requirements and working principles

Sensor ranges / safety distances: definitions, requirements & testing



□ Safety area (variable)

□ Safety area (fixed)

Safety area (variable)
(absolute value of $\Delta v > 0$)

Safety area based on TTC approach, considering
safety distances ($\Delta v = 0$)

In case a vehicle enters the safety area,

- a warning shall be issued (if LCP has started)
- LCM can not be started (LCP may*)
- any LCP which has started be aborted

*considering delay of LCM initiatio n