

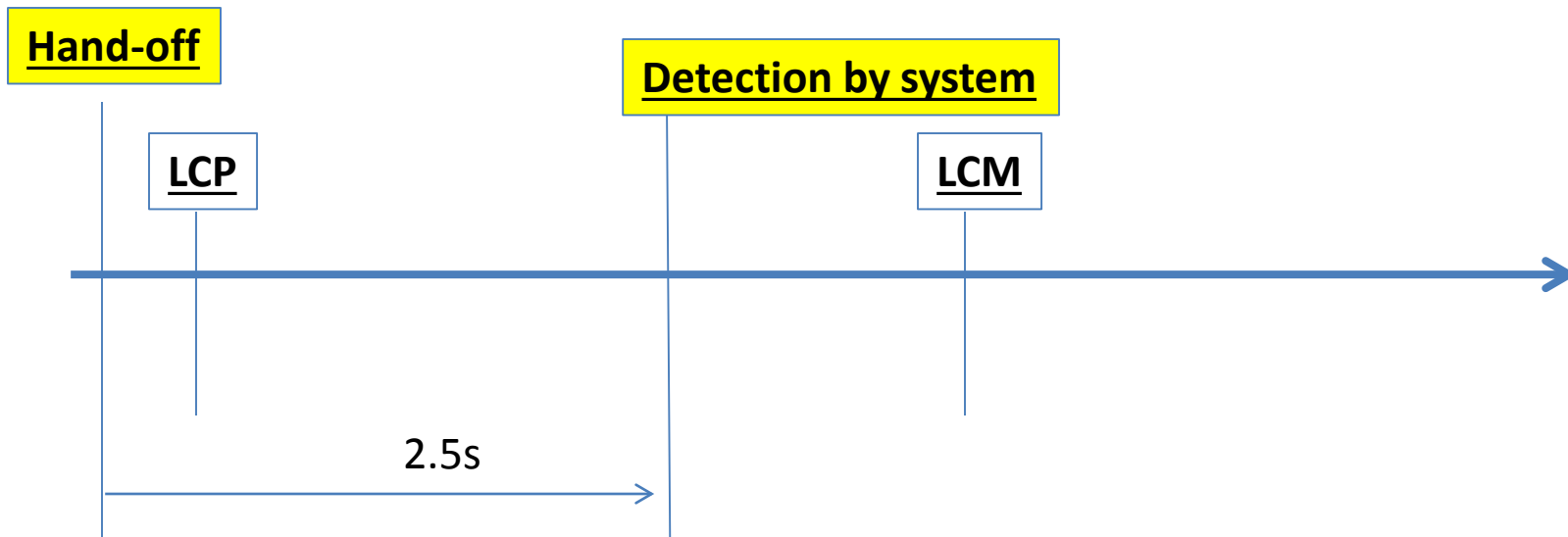
Hands-off detection

versus

Start of Lane Change Manoeuvre

LCM does not start

If, after a period of no longer than [3s] the driver is not holding the steering control, the system shall detect hands-off

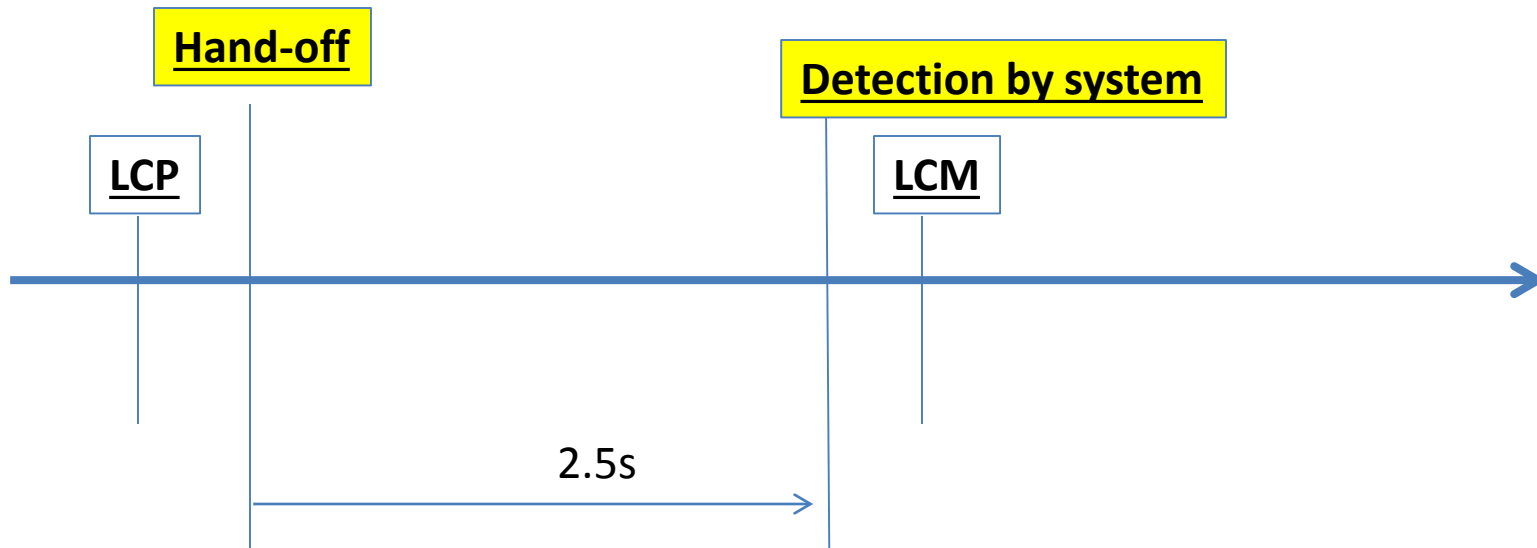


According to CP proposal: « the system has not detected that the driver is holding the steering control at the start of the LCM »

Is it prohibited to start LCM or not?

LCM does not start

If, after a period of no longer than [3s] the driver is not holding the steering control, the system shall detect hands-off

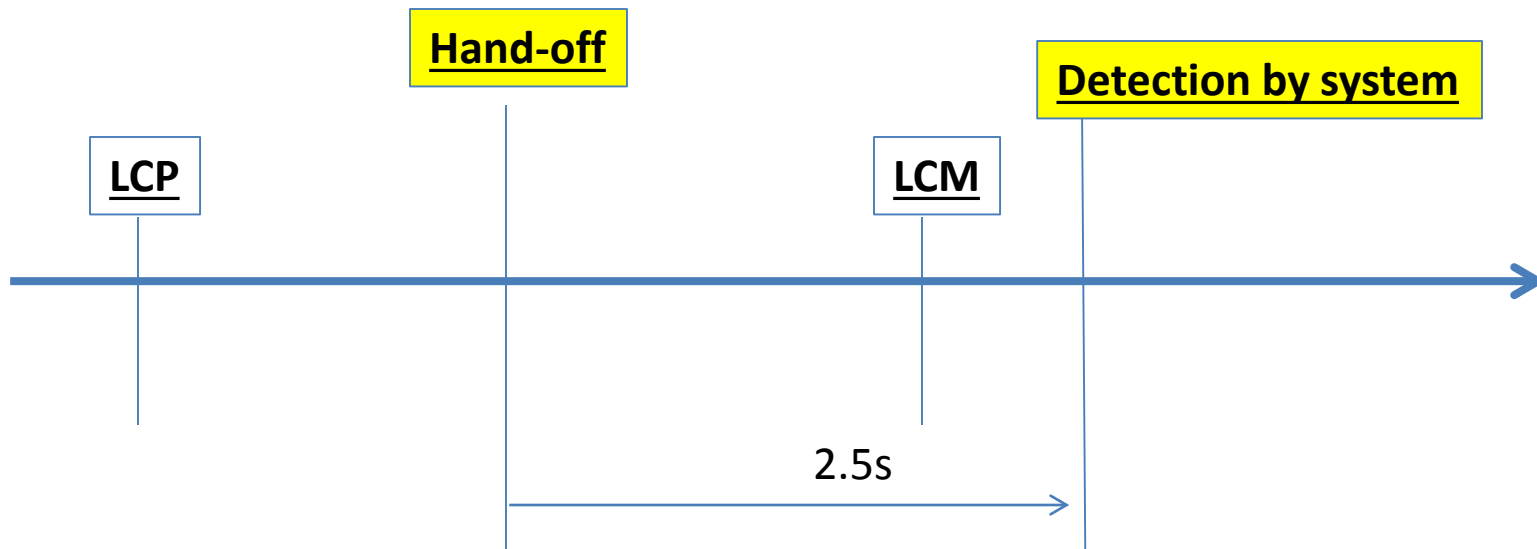


According to CP proposal: « the system has not detected that the driver is holding the steering control at the start of the LCM »

Is it prohibited to start LCM or not?

LCM starts

If, after a period of no longer than [3s] the driver is not holding the steering control, the system shall detect hands-off



According to CP proposal: « the system has not detected that the driver is holding the steering control at the start of the LCM »

Is it prohibited to start LCM or not?