

Submitted by the experts of Japan

Informal Document: ACSF-15-11

# ACSF C tests

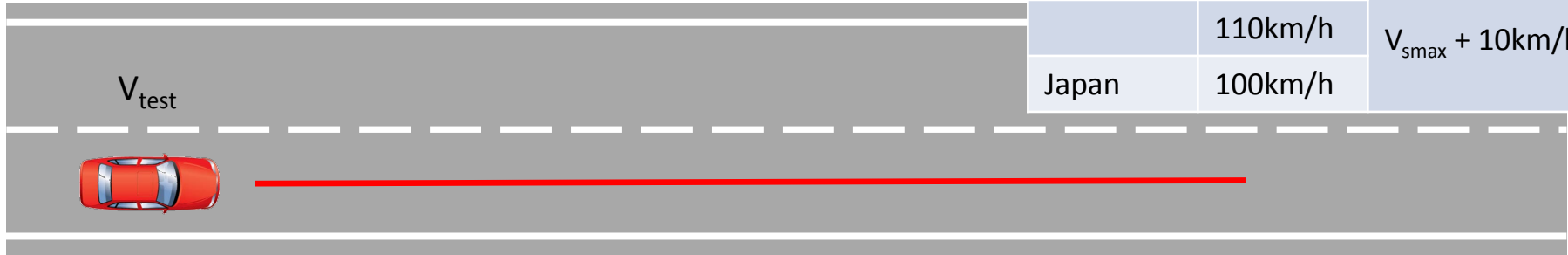
Modified on

Informal Document: ACSF-14-06

Prepared by JAPAN  
15 November, 2017

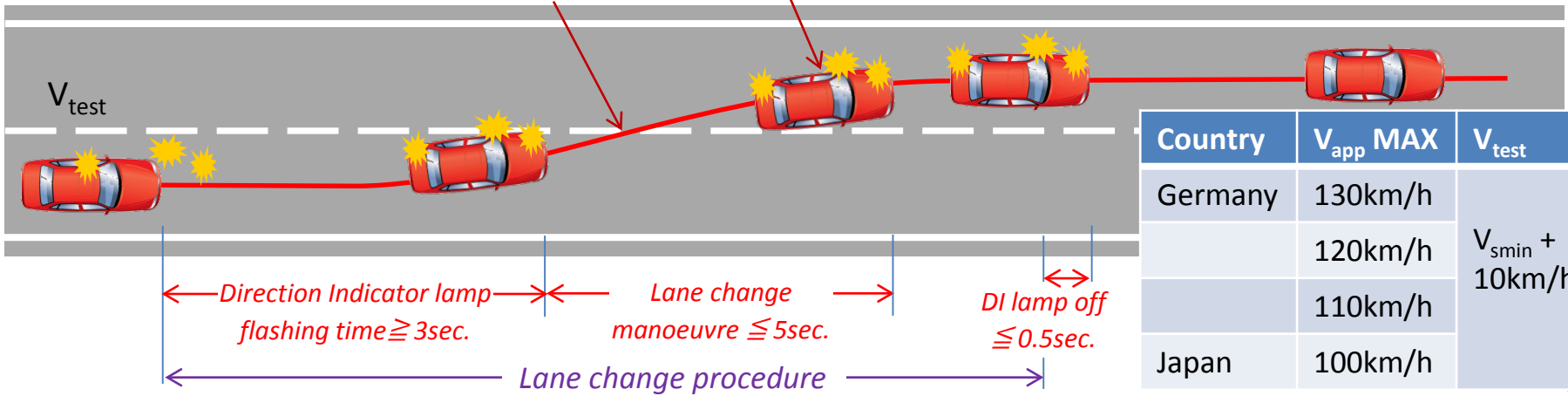
# 3.5.1. Lane change functional test

Conditions are not met



Country	$V_{app}$ MAX	$V_{test}$
Germany	130km/h	$V_{smin} - 10\text{km/h}$
	120km/h	
	110km/h	
Japan	100km/h	$V_{smax} + 10\text{km/h}$

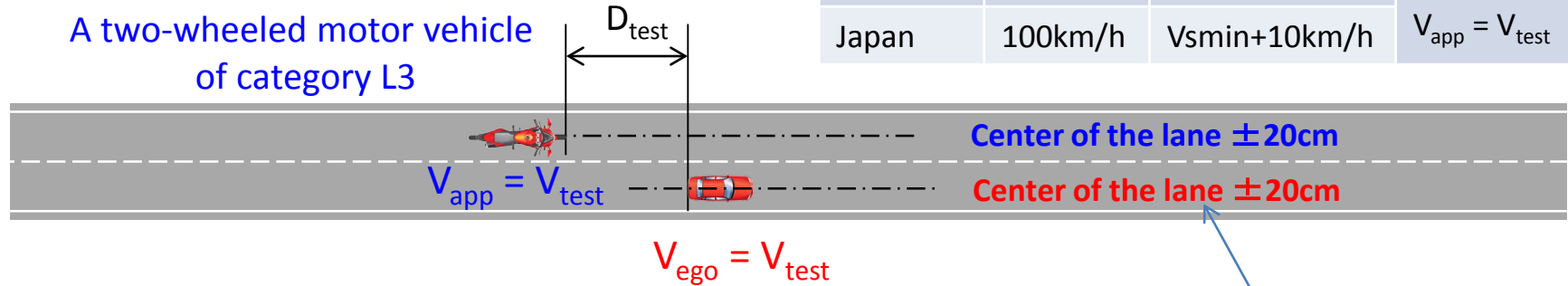
All conditions are met



Country	$V_{app}$ MAX	$V_{test}$
Germany	130km/h	$V_{smin} + 10\text{km/h}$
	120km/h	
	110km/h	
Japan	100km/h	

## 3.5.2. Abort of lane change test

Country	$V_{app}$ Max	$V_{test}$	$D_{test}$
Germany	130km/h	$V_{smin}+10\text{km/h}$	Critical distance at $V_{ego} = V_{test}$ & $V_{app} = V_{test}$
	120km/h	$V_{smin}+10\text{km/h}$	
	110km/h	$V_{smin}+10\text{km/h}$	
Japan	100km/h	$V_{smin}+10\text{km/h}$	



The driver shall initiate the lane change by the deliberate action.

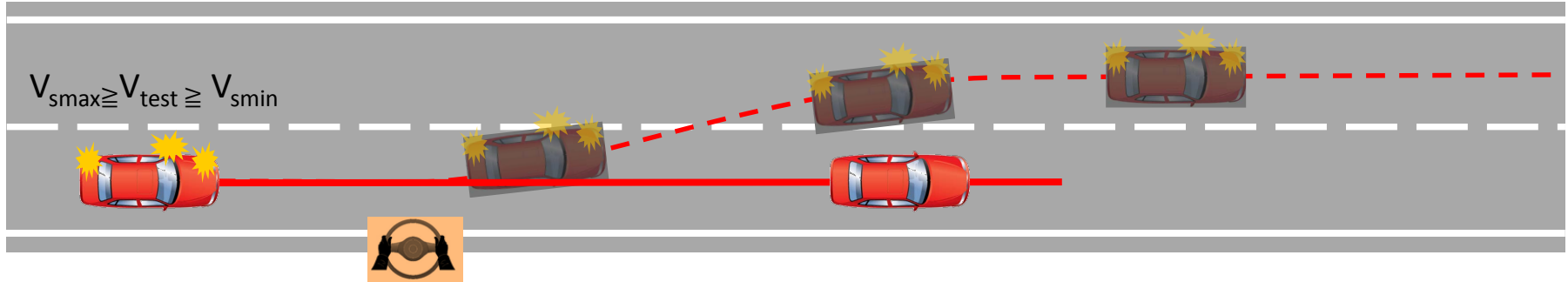
Is it needed?

1. The lane change procedure does not start.  
or
2. The lane change procedure is canceled no later than **5** seconds after the deliberate action of the driver, if the lane change procedure has started and the manoeuvre is delayed. The driver is informed that the manoeuvre is delayed.

## 3.5.3. Overriding force test

### Applicable Paragraph

5.6.5.3

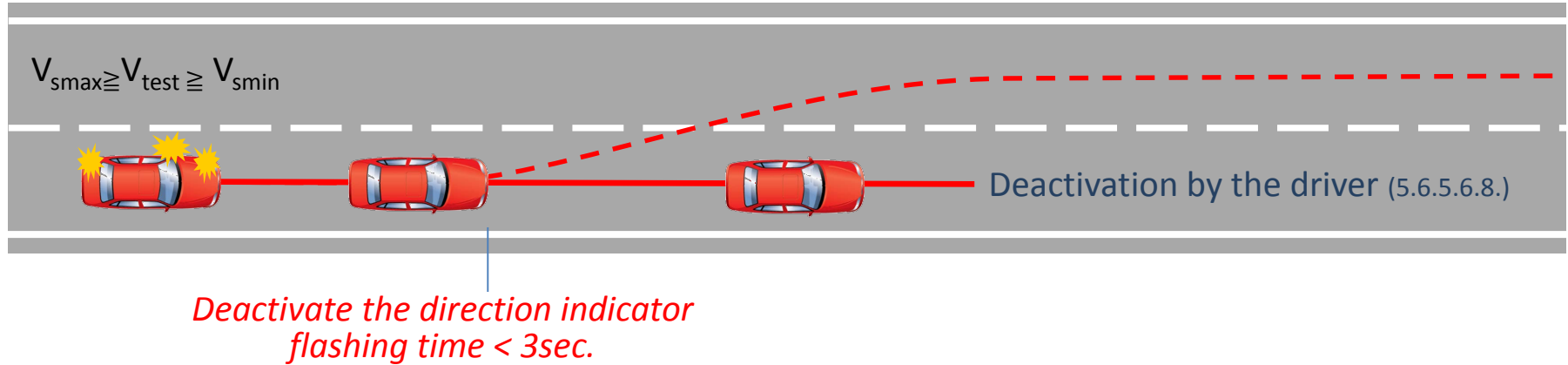


*firmly maintain the steering in the straight direction*

### Procedure

1. *Initiate lane change*
2. *Before the start of the lane change manoeuvre, the driver shall firmly maintain the steering in the straight direction.*
3. *Measure the steering effort*

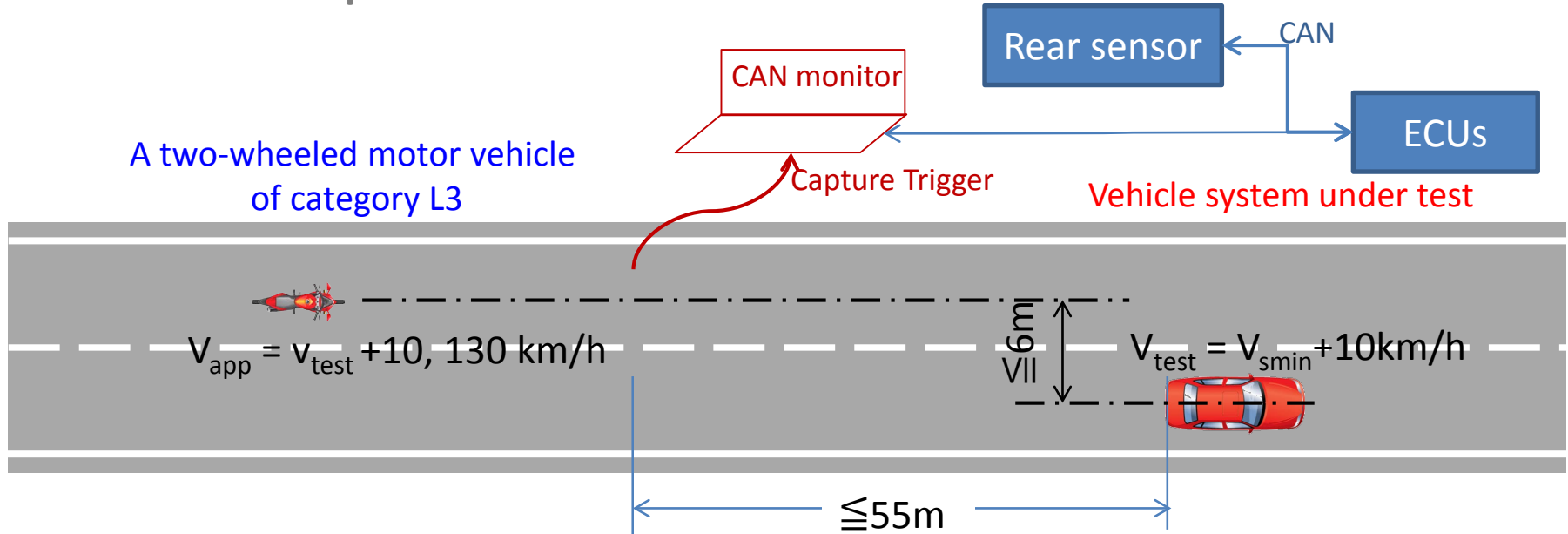
## 3.5.4. Deactivation test



### Procedure

1. Initiate lane change
2. Before the start of the lane change manoeuvre, the driver shall deactivate the direction indicator.

### 3.5.5. Sensor performance test



#### Measurement

*Capture the sensor data, distance and speed, at the timing the rear vehicle is detected*

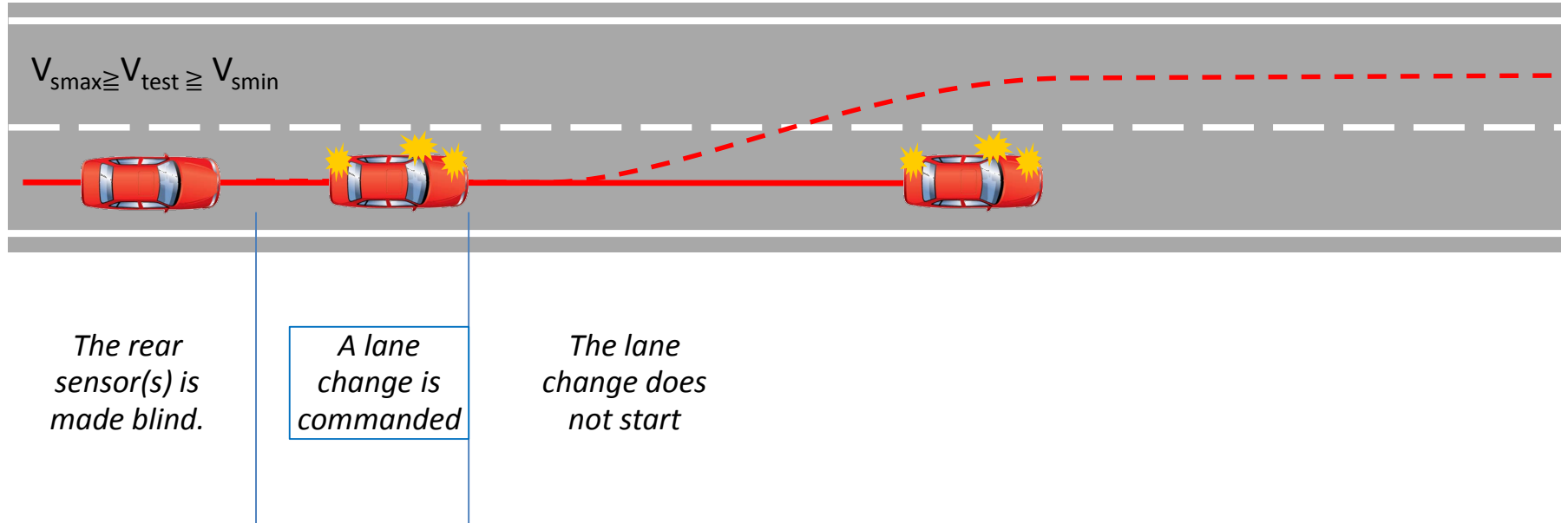
*Confirm the actual distance to the rear by using GPS data of both vehicles*

*Confirm the actual speed of the rear vehicle*

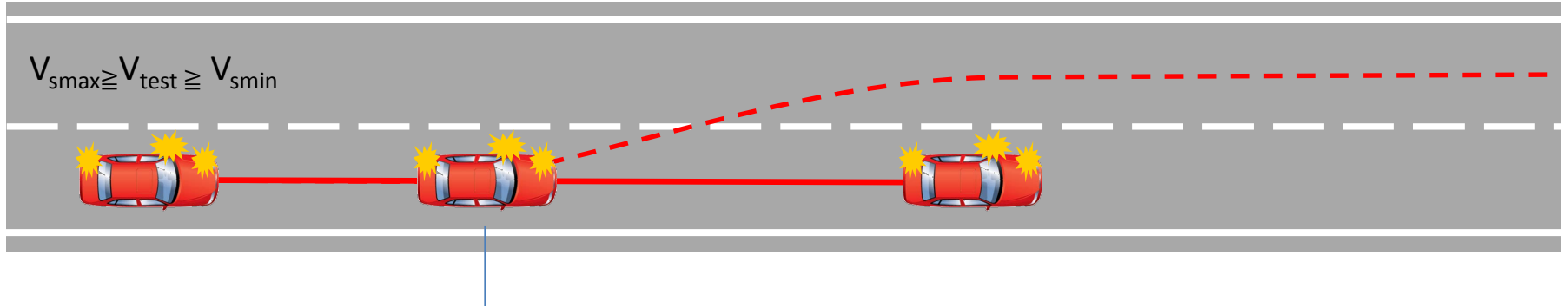
***Connection of CAN monitor system should be allowed.***

### 3.5.6. Sensor blindness test

Extra-test proposed by industry



### 3.5.7.3. Engine start/run cycle test (Phase 1)

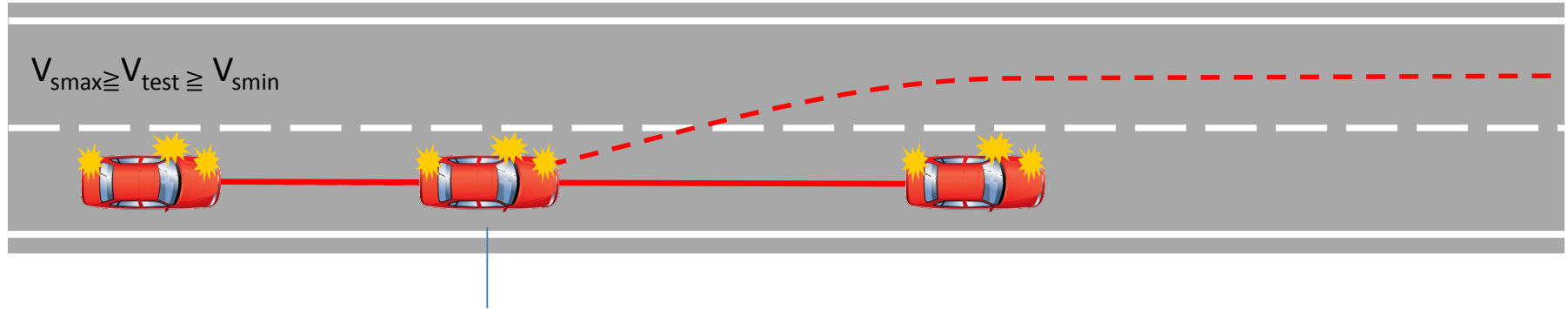


#### Procedure

1. A new engine start/run cycle
2. Check ACSF C is default off.



### 3.5.7.3. Engine start/run cycle test (Phase 2)



#### Procedure

1. Perform phase 1
2. The driver switches on ACSF C
3. The driver commands a lane change right after ACSF C switched on → No lane change

