

# ASEP SCOPE and Border

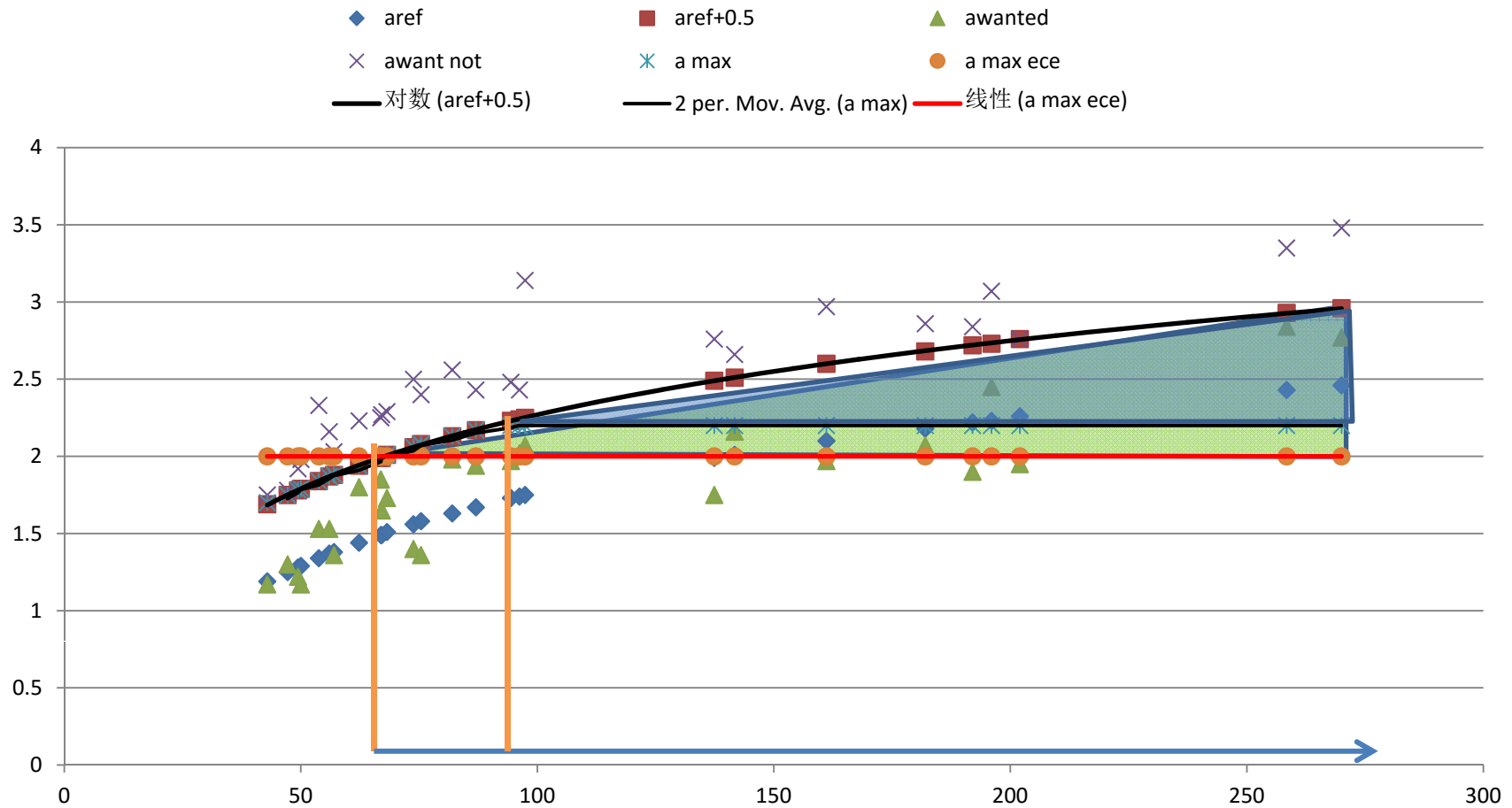
Scope based on PMR

Acceleration is the border condition

Engine speed is the exempt condition

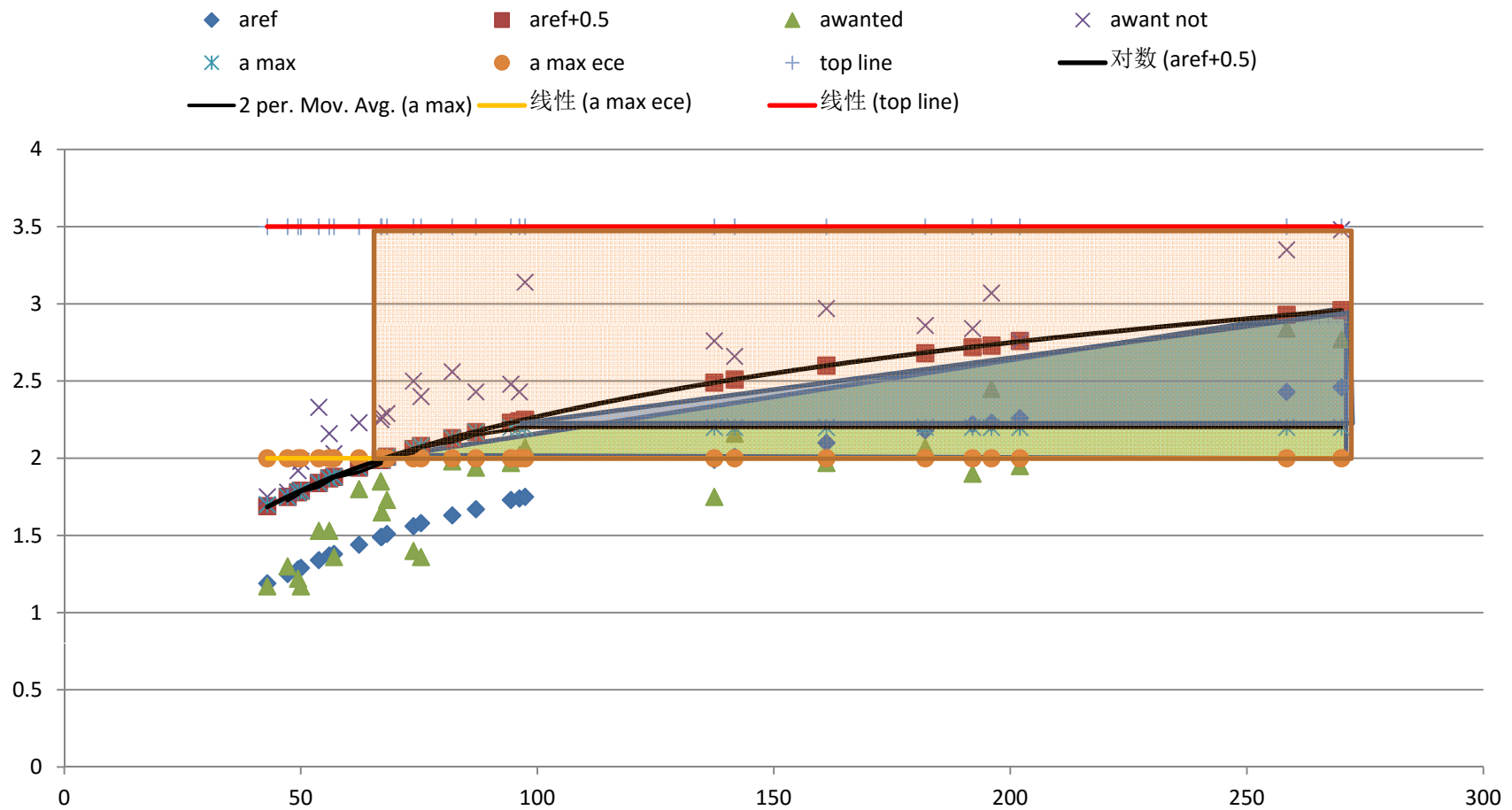
# Which car needs a ASEP

(PMR higher than 67 for ECE and higher than 90 for GB 1495)



# Top border line based on acceleration

(3.5 m/S<sup>2</sup> acceleration is enough)



# Exempt condition

(based on maximum engine speed during ISO 362-1 test)

