

# 20<sup>th</sup> meeting Informal Working Group on WLTP in Seoul

September 26<sup>th</sup> ~28<sup>th</sup>, 2017



Ministry of Land,  
Infrastructure and Transport

**T****S** Korea Automobile Testing &  
Research Institute

## Meeting Venue

# Four Seasons Hotel Seoul (Korean language : 포시즌스 호텔 서울)

(03183) 97, Saemunan-ro,  
Jongno-gu,  
Seoul, Republic of Korea

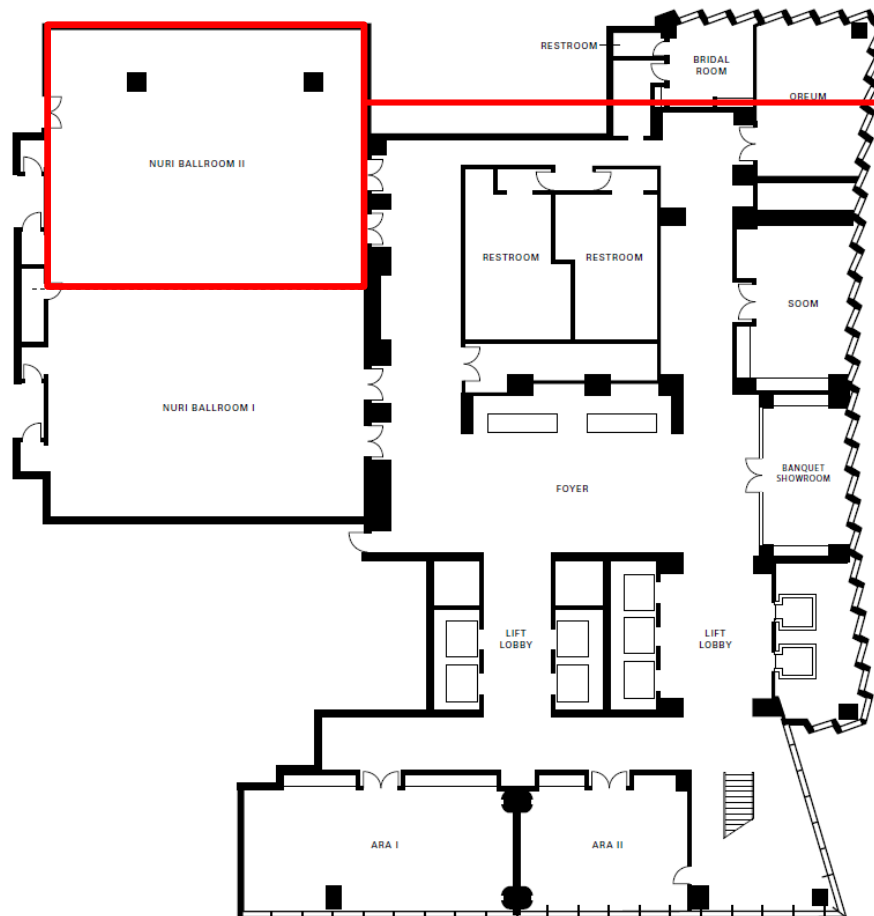
<http://www.fourseasons.com/seoul/>



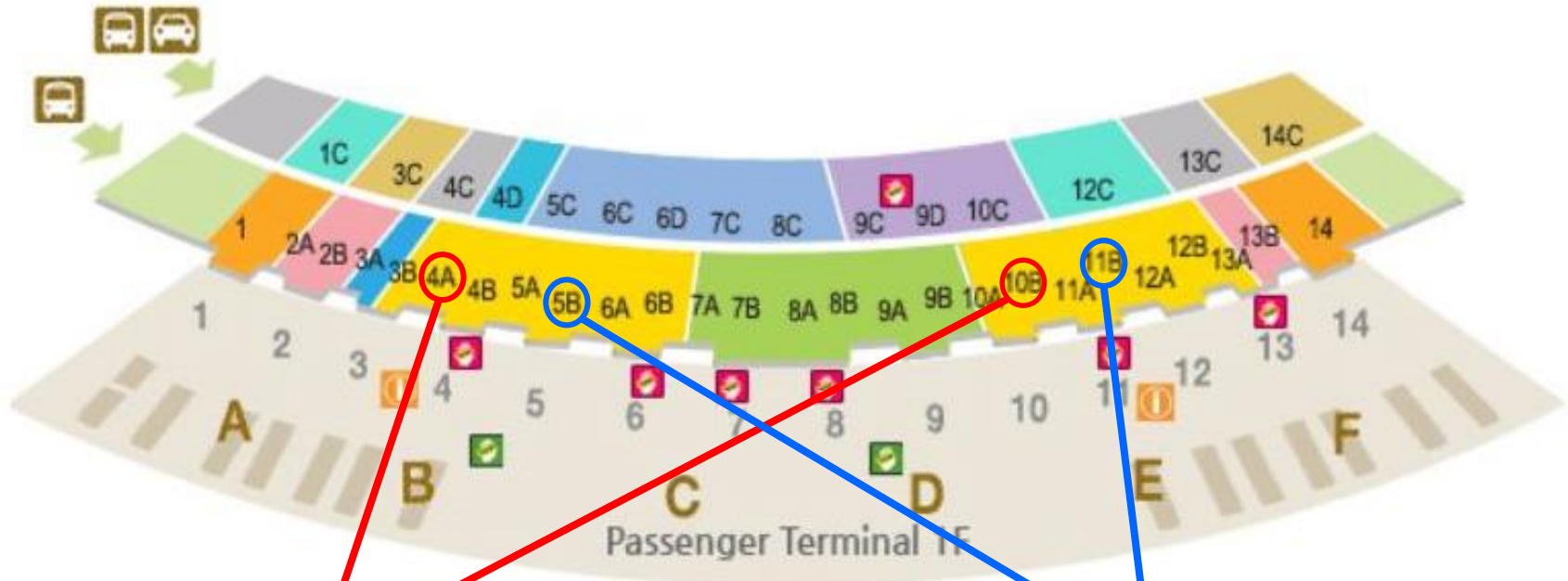
# Meeting Room

The meeting will take place in room **NURI II(6 Floor)**

The room has a capacity of ***Max. 60 person***



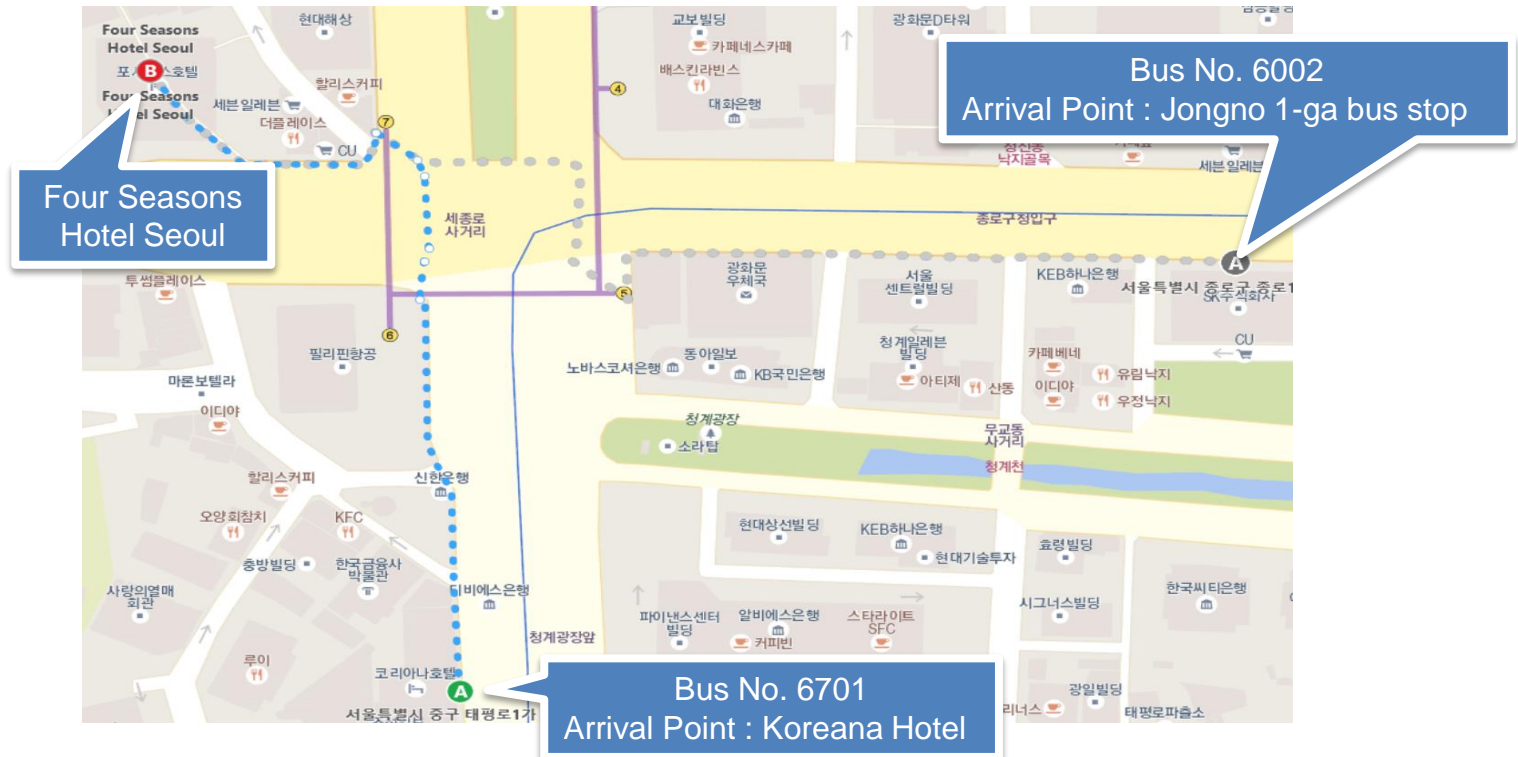
## How to reach by public transport – From Inchoen Int. Airport



- Bus No. : 6701
- Bus Stop : 4A, 10B
- Bus Fares : ¥16,000
- Length of Trip : 60 ~ 70 min.
- Interval : 20 ~ 30 min.
- Operation Hour : 5:00 ~ 19:04

- Bus No. : 6002
- Bus Stop : 5B, 11B
- Bus Fares : ¥10,000
- Length of Trip : 100 min.
- Interval : 10 ~ 15 min.
- Operation Hour : 4:30 ~ 21:00

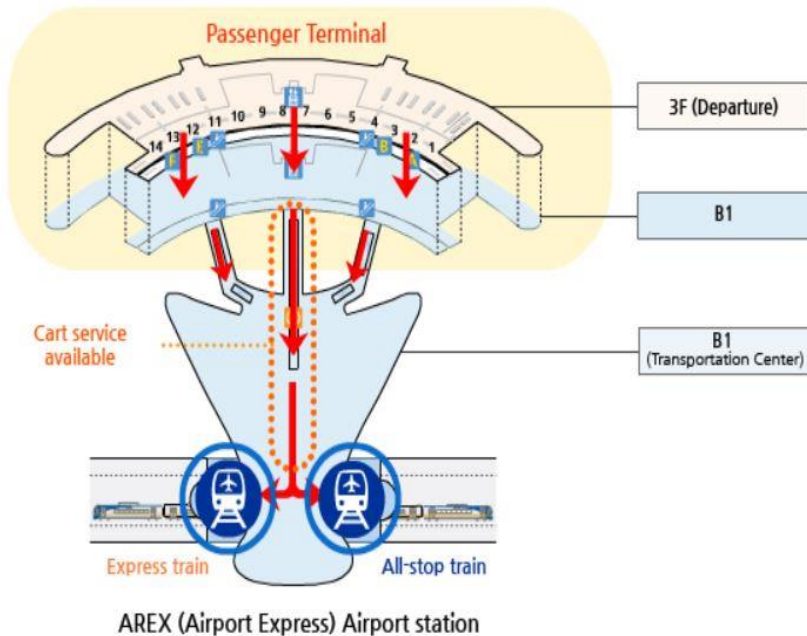
# How to reach by public transport – From Inchoen Int. Airport



- Bus No. : 6701
- Arrival Point : Koreana Hotel
- 450m / 8 minutes by foot
- ☎ 82-2-2667-0386

- Bus No. : 6002
- Arrival Point : Jongno 1-ga bus stop
- 490m / 10 minutes by foot
- ☎ 82-2-2667-0386

## How to reach by public transport – From Inchoen Int. Airport

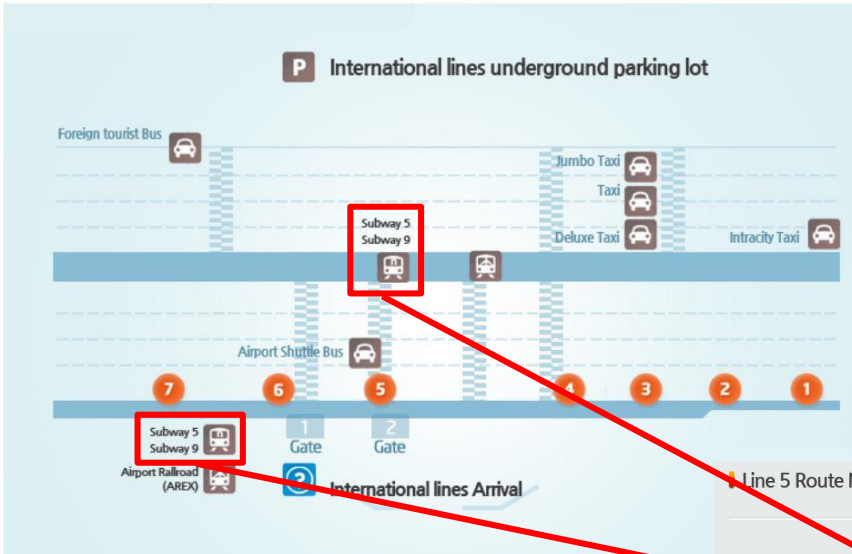


- From the airport, take the Airport Railroad in the direction of Seoul Station
- Transfer at Gongdeok Station to Seoul Subway Line 5 in the direction of Sangil-dong Station
- Disembark at Gwanghwamun Station (Exit 7) The Hotel is about a 3-minute walk from the station





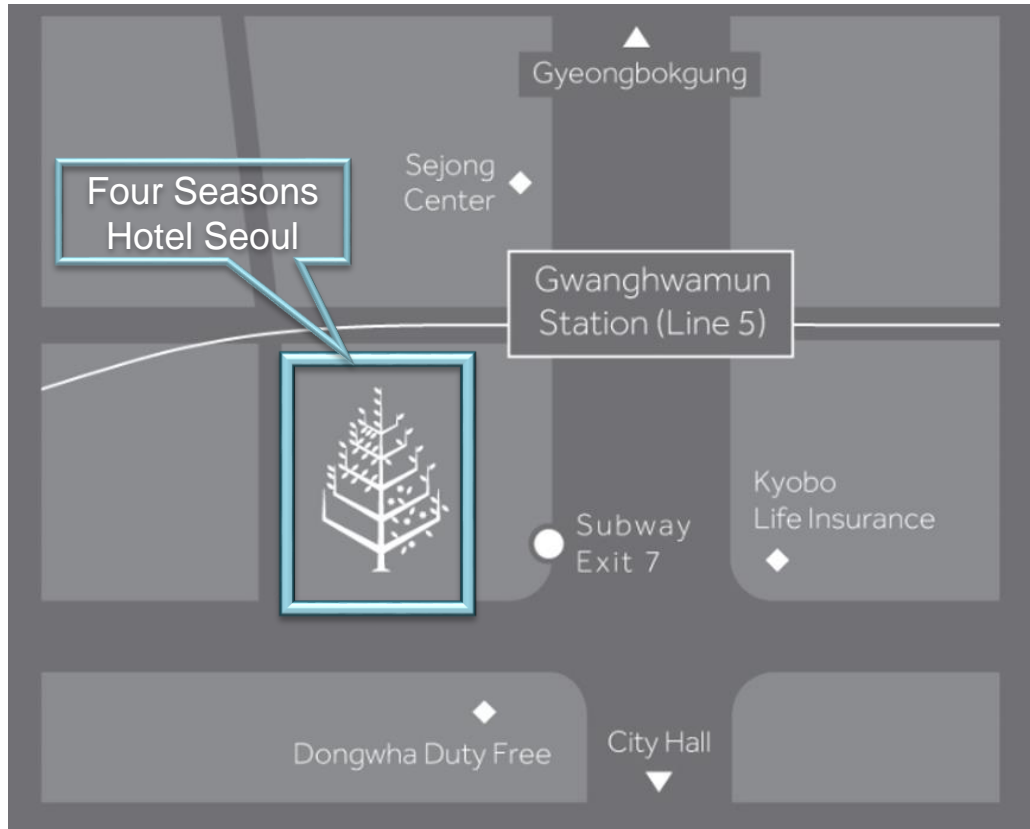
# How to reach by public transport – From Gimpo Int. Airport



Line 5 Route Map



## How to reach by public transport – From Gimpo Int. Airport

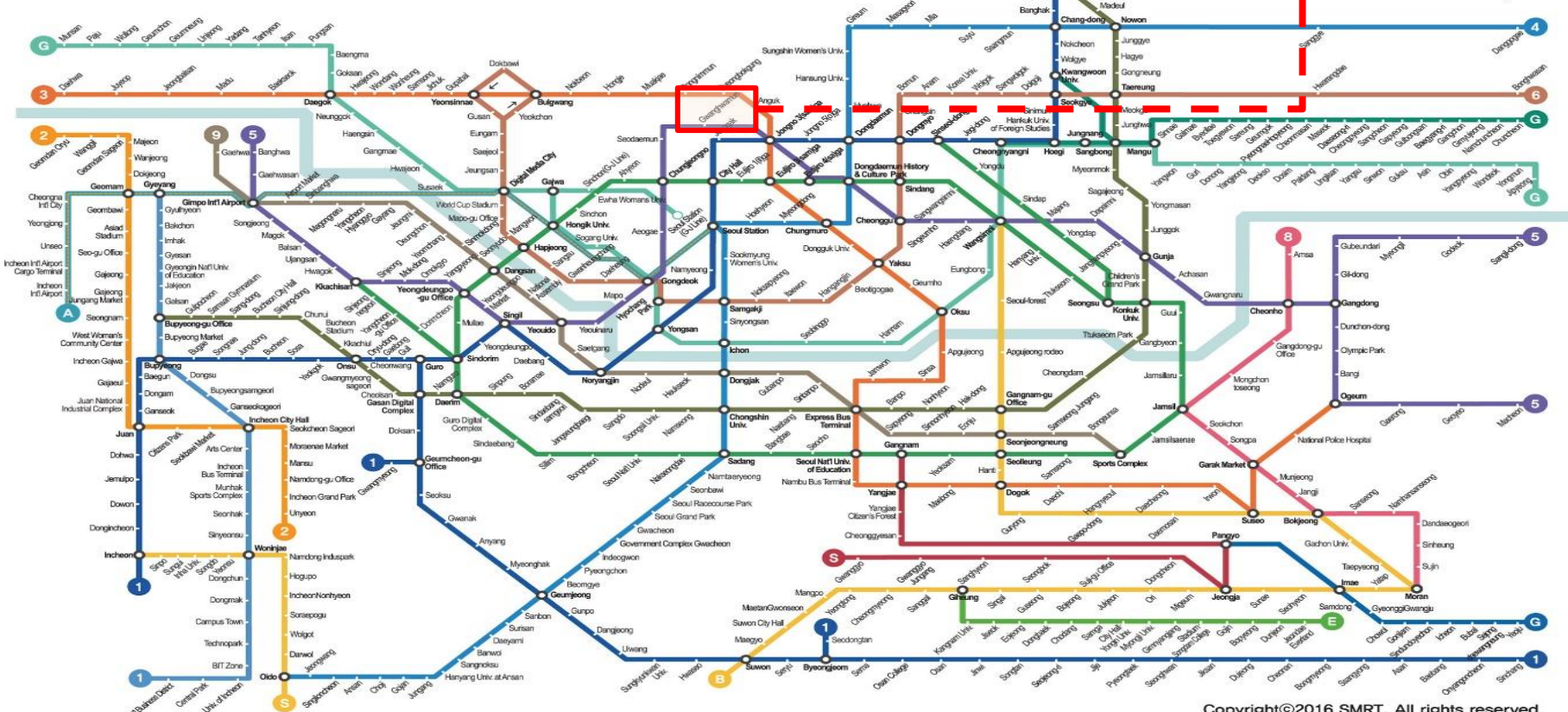


- From the airport, take the Seoul Subway Line 5 in the direction of Sangil-dong or Macheon stations
- Disembark at Gwanghwamun Station (Exit 7) The Hotel is about a 3-minute walk from the station
- Travel time : 50min



# How to reach by public transport

[Seoul Subway Map – Click Here](#)



## Hotel Information

- **Four Seasons Hotel Seoul** (<http://www.fourseasons.com/seoul/>)  
97 Saemunan-ro, Jongno-gu, Seoul, Korea, Tel. +82-2-6388-5000  
※ Special rates apply for hotel stays. Fill out the form and make a reservation with the following email:  
→ [reservations.sko@fourseasons.com](mailto:reservations.sko@fourseasons.com) or [kihyun.kim@fourseasons.com](mailto:kihyun.kim@fourseasons.com)
- **Shilla Stay Gwanghwamun** (<http://shillastay.com/stayhub/index.do>)  
63 Yulgok-ro 4-gil, Susong-dong, Jongno-gu, Seoul, Korea, Tel. +82-2-6060-9000
- **Best Western New Seoul Hotel** (<http://www.bestwesternnewseoul.co.kr/eng/?lang=eng>)  
29-1 Taepyeongno 1-ga, Jung-gu, Seoul, Korea, Tel. +82-2-735-8800
- **NEW KUKJE HOTEL** (<http://newkukjehotel.com/index1.asp>)  
29-2 Taepyeongno 1-ga, Jung-gu, Seoul, Korea, Tel. +82-2-732-0161
- **The Plaza Seoul** (<http://www.marriott.com/hotels/travel/selak-the-plaza-seoul-autograph-collection/>)  
119 Sogong-ro, Sogong-dong, Jung-gu, Seoul, Korea, Tel. +82-2-771-2200
- **Shilla Stay Seodaemun** (<http://www.shillastay.com/seodaemun/index.do>)  
140-3 Chungjeongno 2(i)-ga, Seodaemun-gu, Seoul, Korea, Tel. +82-2-2230-0700
- **The Westin Chosun Seoul** (<https://twc.echosunhotel.com/main.do>)  
106 Sogong-ro, Jung-gu, Seoul, Korea, Tel. +82-2-771-0500
- **Crown Park Hotel Seoul** ([http://www.crownparkhotel.co.kr/view/index.do?SS\\_SVC\\_LANG\\_CODE=ENG](http://www.crownparkhotel.co.kr/view/index.do?SS_SVC_LANG_CODE=ENG))  
19 Namdaemun-ro 7-gil, Sogong-dong, Jung-gu, Seoul, Korea, Tel. +82-2-750-5900

## Registration

Please send your registration **not later than**  
**September 8<sup>th</sup>, 2017**

The Chair, Rob Cuelenaere ([rob.cuelenaere@tno.nl](mailto:rob.cuelenaere@tno.nl))

Technical Secretary,

Nick ICHIKAWA ([noriyuki\\_ichikawa@mail.toyota.co.jp](mailto:noriyuki_ichikawa@mail.toyota.co.jp))

Bergmann MARJUS ([Markus.Bergmann@AUDI.DE](mailto:Markus.Bergmann@AUDI.DE)) &

Meeting Host, Charyung Kim ([cha1052@ts2020.kr](mailto:cha1052@ts2020.kr))

- I. Your full Name
- II. Your title and name of your business
- III. Your e-mail address