

Accident data study in support of development of Automatic Emergency Braking Systems

**Japan investigated the traffic accidents data that the car collide with
the bicycles. (ITARDA 2007 - 2016)**

This result will use to consider the test scenario of AEBS for car to cyclist

Detail of this investigation

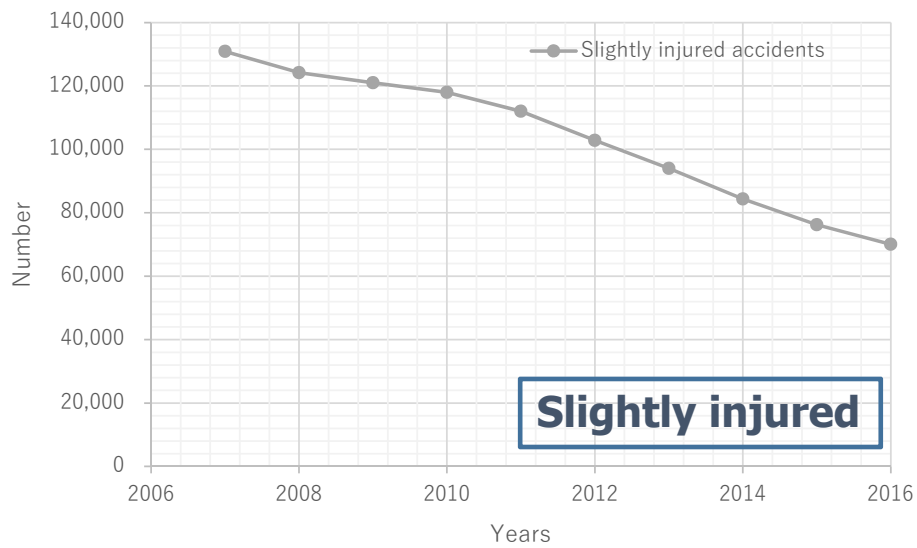
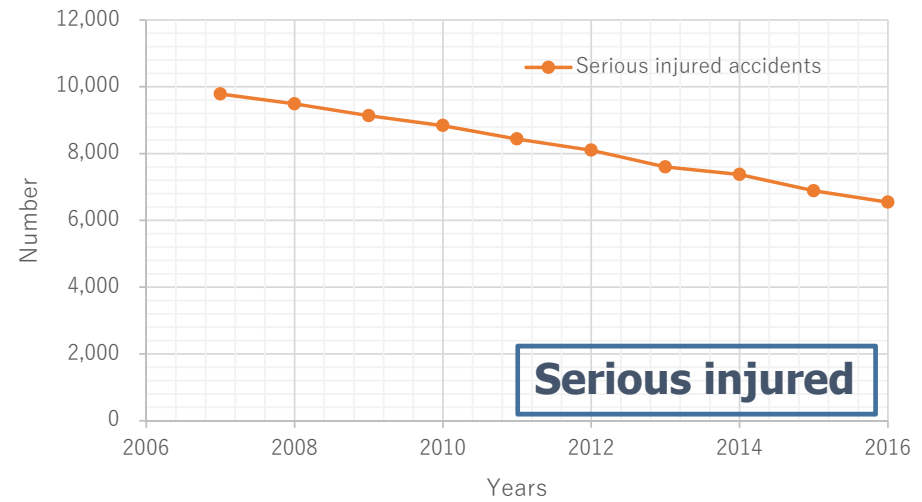
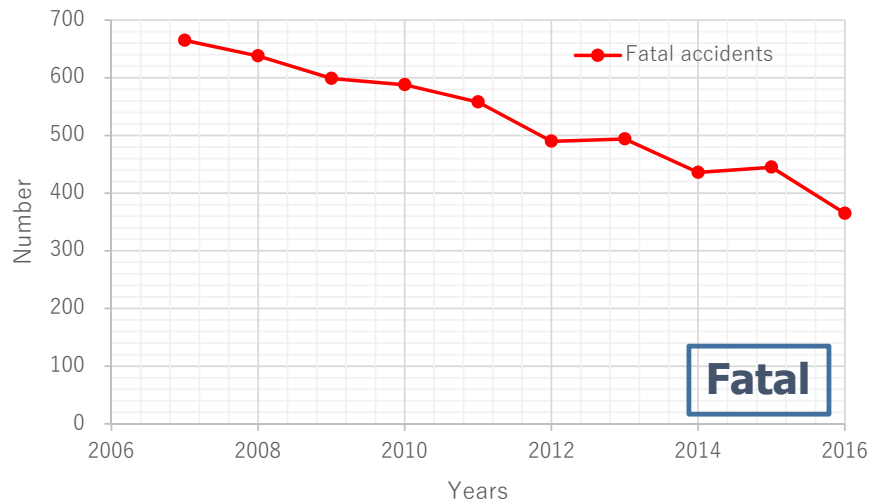
(1) Situation:

Relationship between Type of traffic accidents and Types of road

(2) Behavior

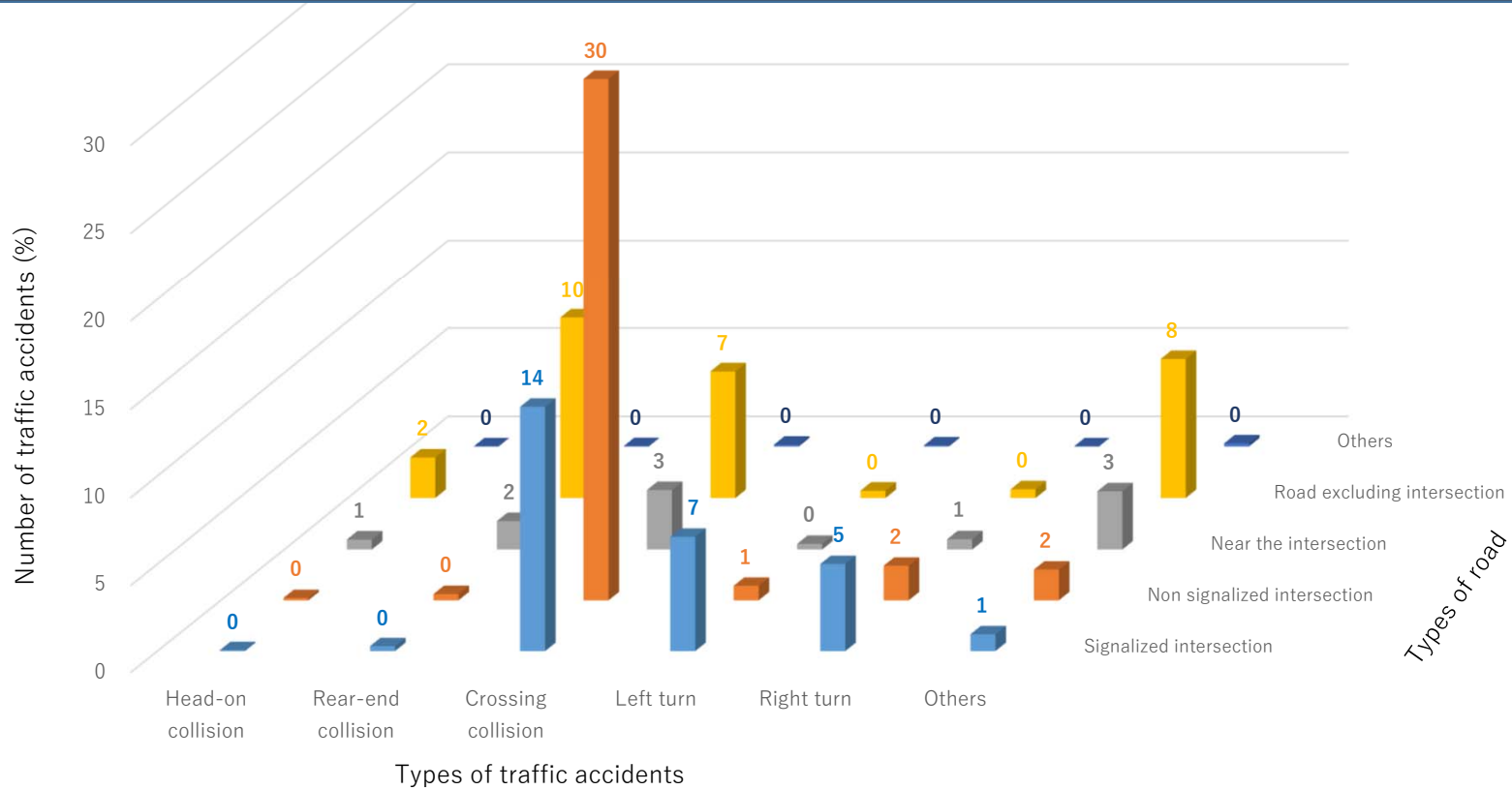
Relationship between Bicycles and Vehicles

Number of traffic accidents of Bicycle vs Vehicle (2007 - 2016)



The number of traffic accidents (2016)
Fatal accidents: About 400
Serious injured accidents: About 6,500
Slightly injured accidents: About 70,000

【Situation】 Fatal accidents of Bicycle vs Vehicle (2007 - 2016)

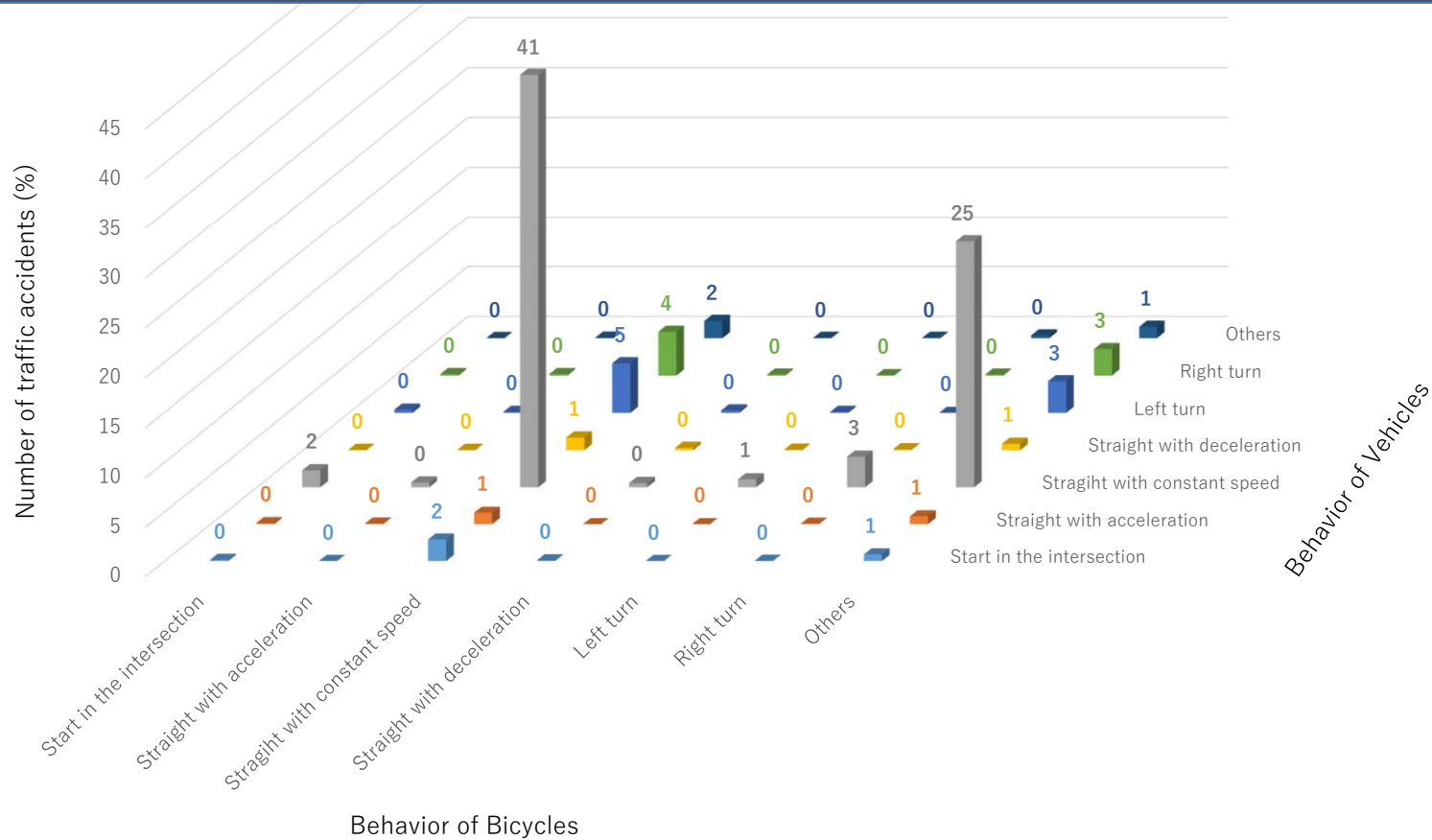


The highest situation

Types of traffic accidents: **Crossing collision**

Types of road: **Non signalized intersection**

[Behavior] Fatal accidents of Bicycle vs Vehicle (2007 - 2016)

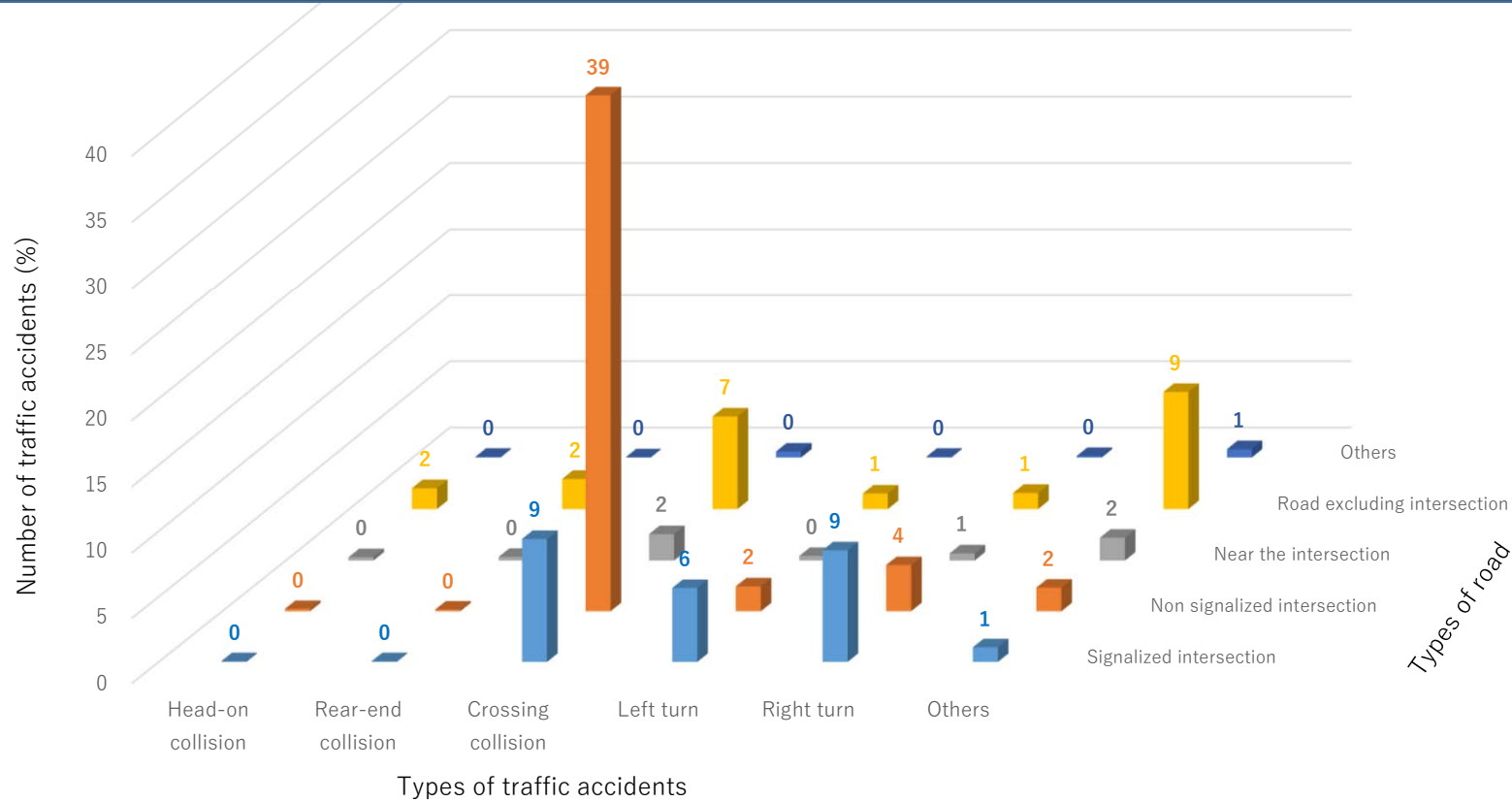


The highest situation

Behavior of bicycles: **Straight with constant speed**

Behavior of vehicles: **Straight with constant speed**

【Situation】 Serious injured accidents of Bicycle vs Vehicle (2007 - 2016)

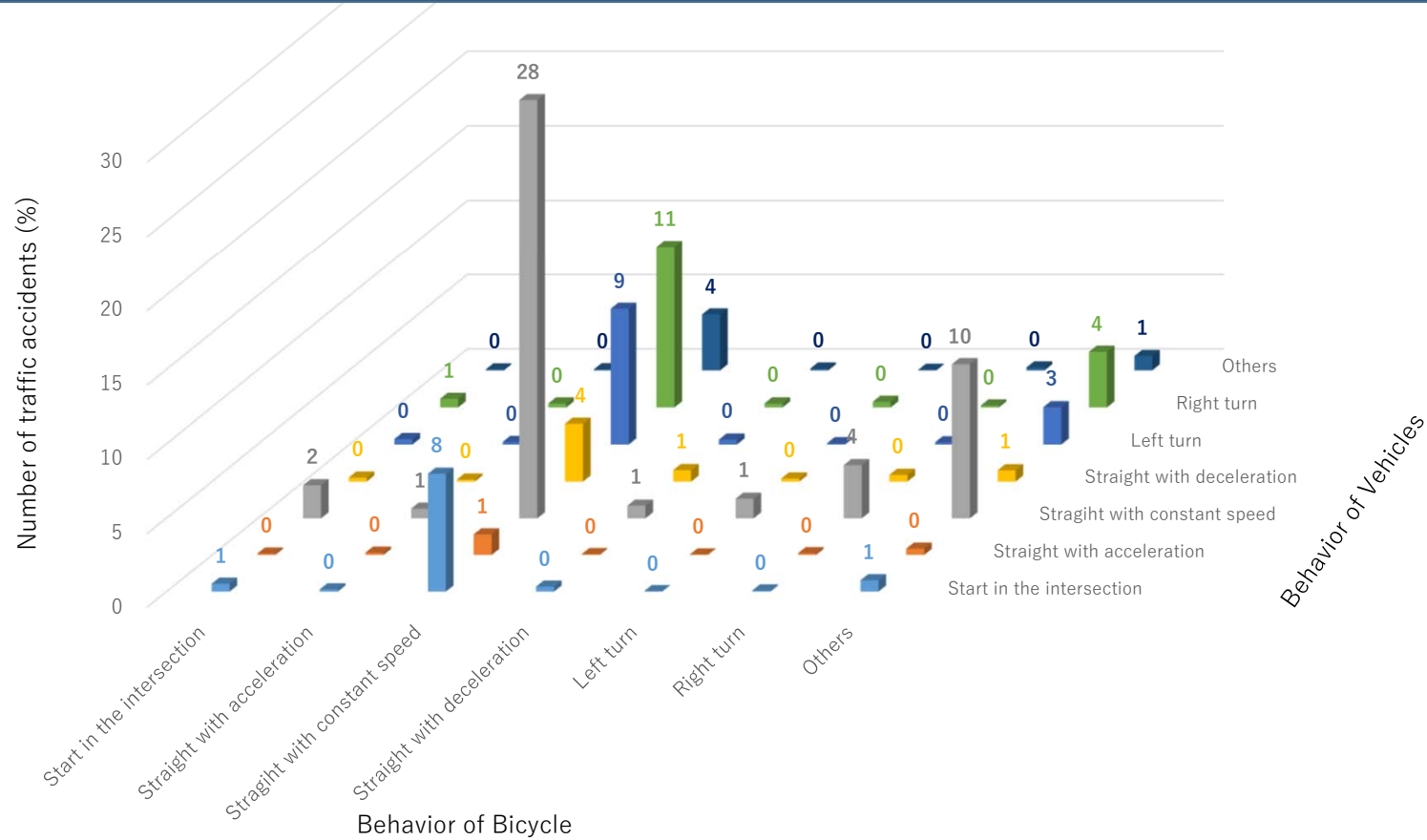


The highest situation

Types of traffic accidents: **Crossing collision**

Types of road: **Non signalized intersection**

【Behavior】 Serious injured accidents of Bicycle vs Vehicle (2007 - 2016)

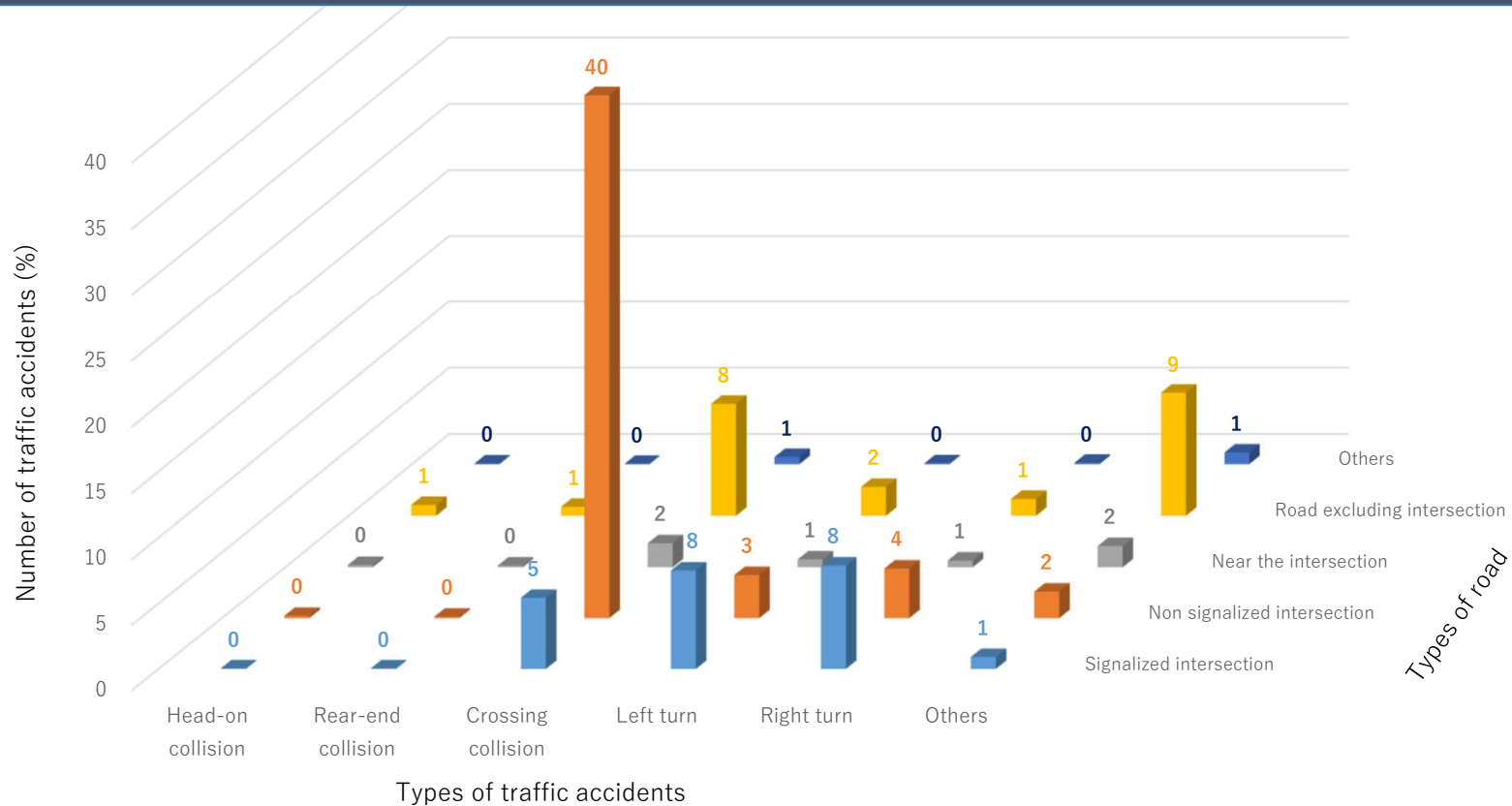


The highest situation

Behavior of bicycles: **Straight with constant speed**

Behavior of vehicles: **Straight with constant speed**

【Situation】 Slightly injured accidents of Bicycle vs Vehicle (2007 - 2016)

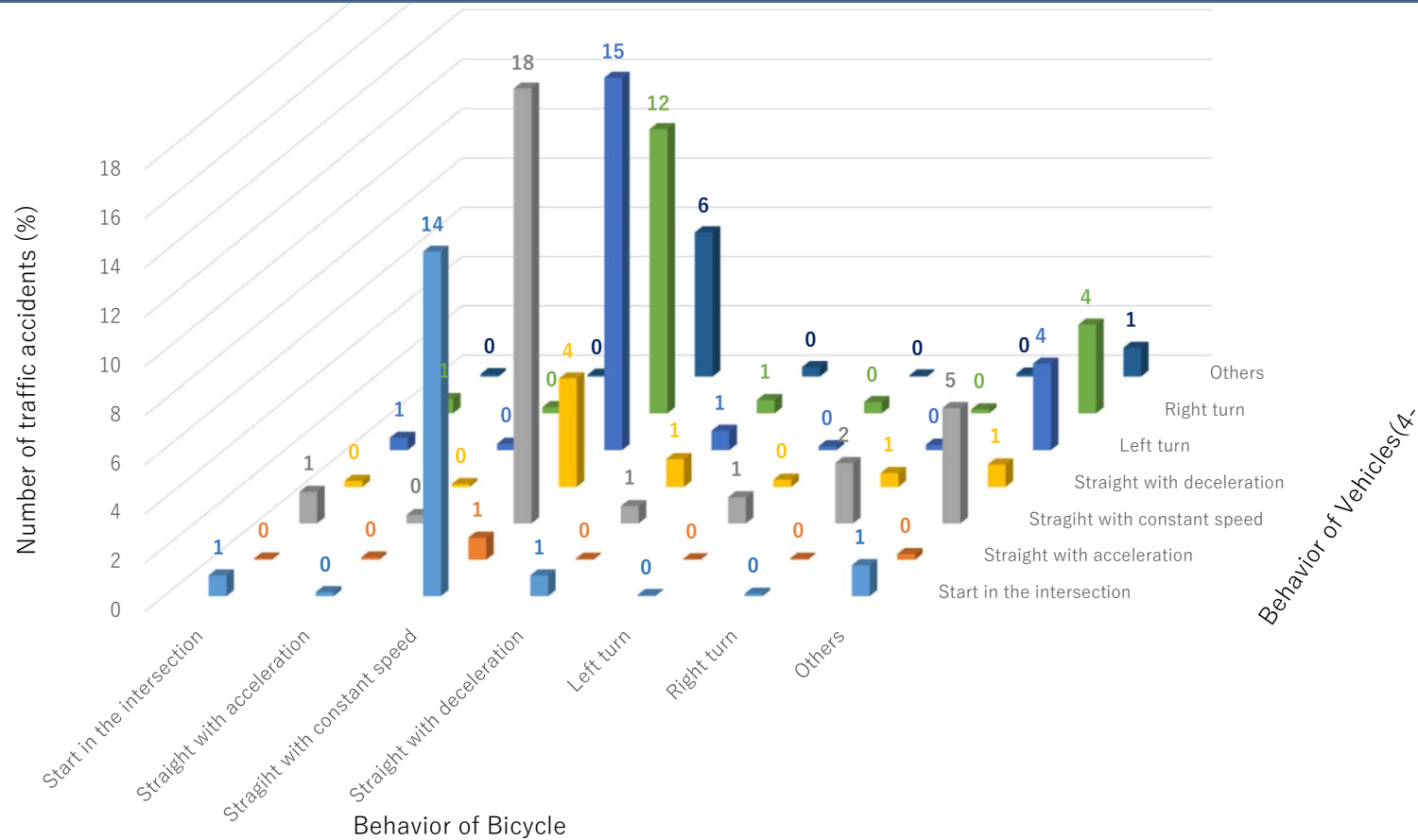


The highest situation

Types of traffic accidents: **Crossing collision**

Types of road: **Non signalized intersection**

【Behavior】 Slightly injured accidents of Bicycle vs Vehicle (2007 - 2016)



Behavior of bicycles: **Straight with constant speed is high percentage**

Summary

Detail of investigation

(1) Situation:

Relationship between Type of traffic accidents and Types of road

Priority of test situation

Types of traffic accidents: **Crossing collision**

Types of road: **Non signalized intersection**

(2) Behavior:

Relationship between Bicycles and Vehicles based on fatal accidents

Priority of test situation

Behavior of bicycles: **Straight with constant speed**

Behavior of vehicles: **Straight with constant speed**