

Drawing Review (surface level) Update

6th IG GTR9-PH2 Meeting
19-20/March/2013

Japan Automobile Standards Internationalization Center (JASIC)

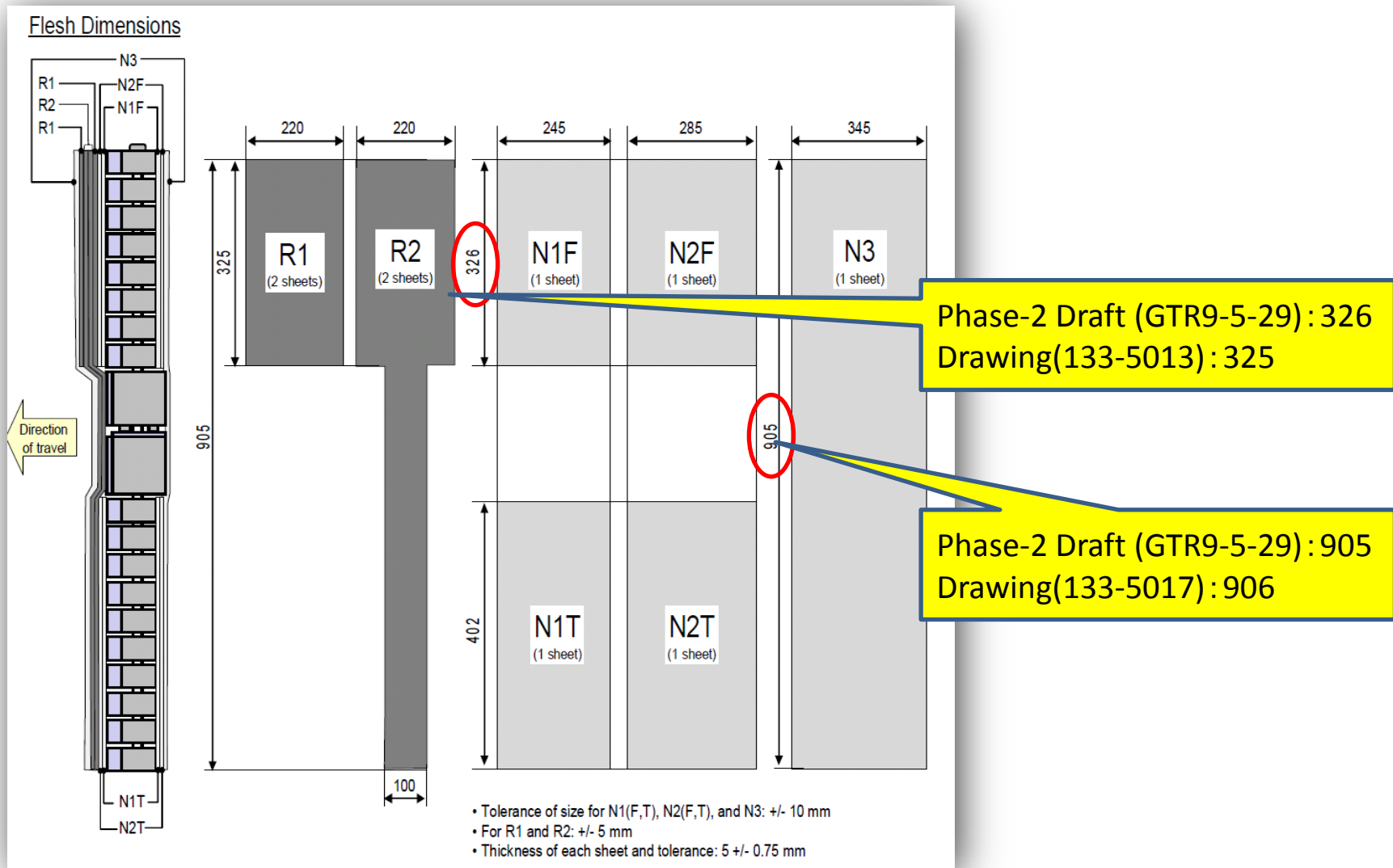
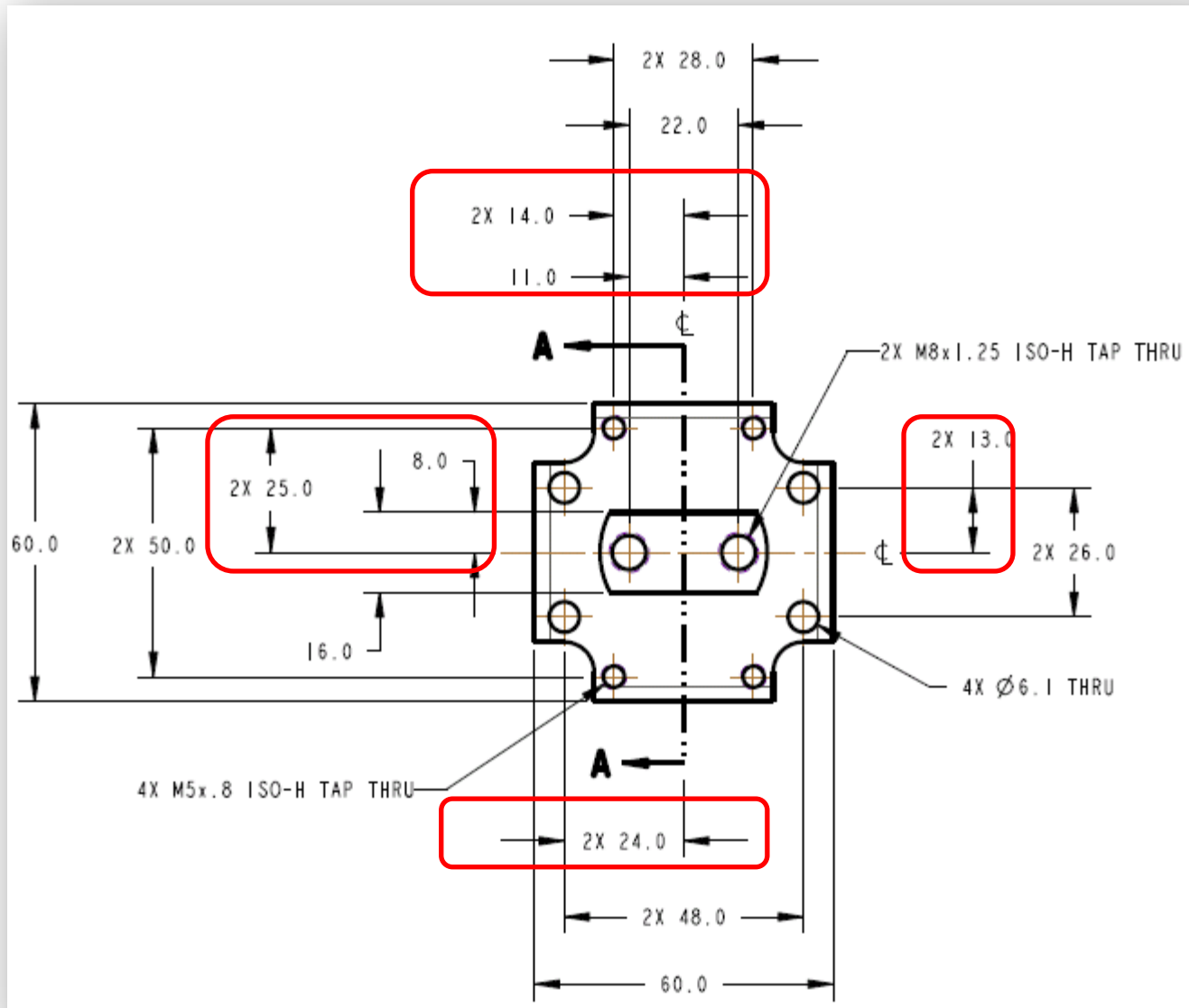


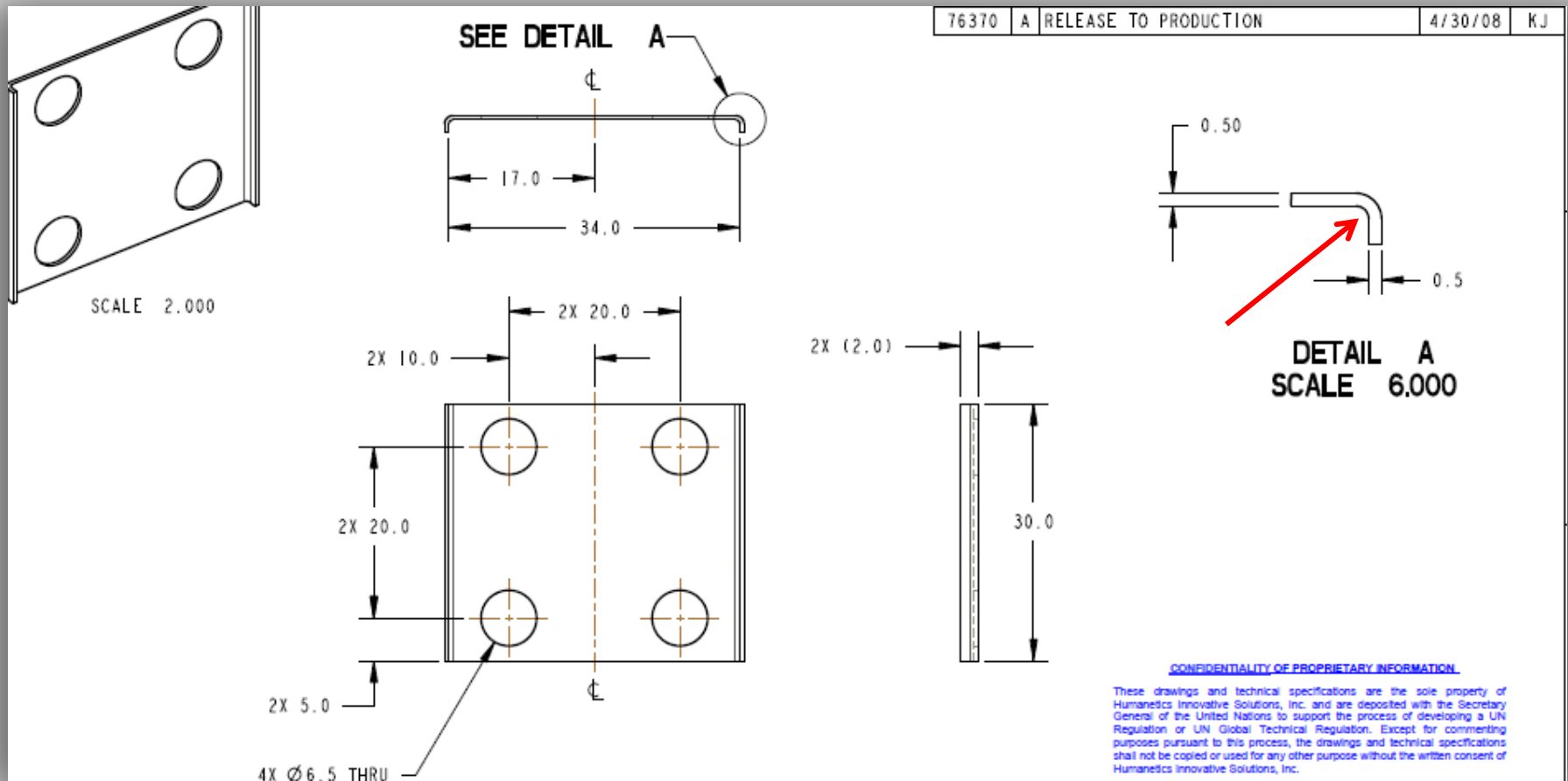
Figure 14 Flexible lower legform impactor; flesh dimensions (GTR9-5-29, p18)

Example from Drawing (133-5102)



The dimensions in the red frames are unnecessary because the centerlines are shown

Example from Drawing (133-5001)



The radius shown in the red arrow is not specified in the drawing