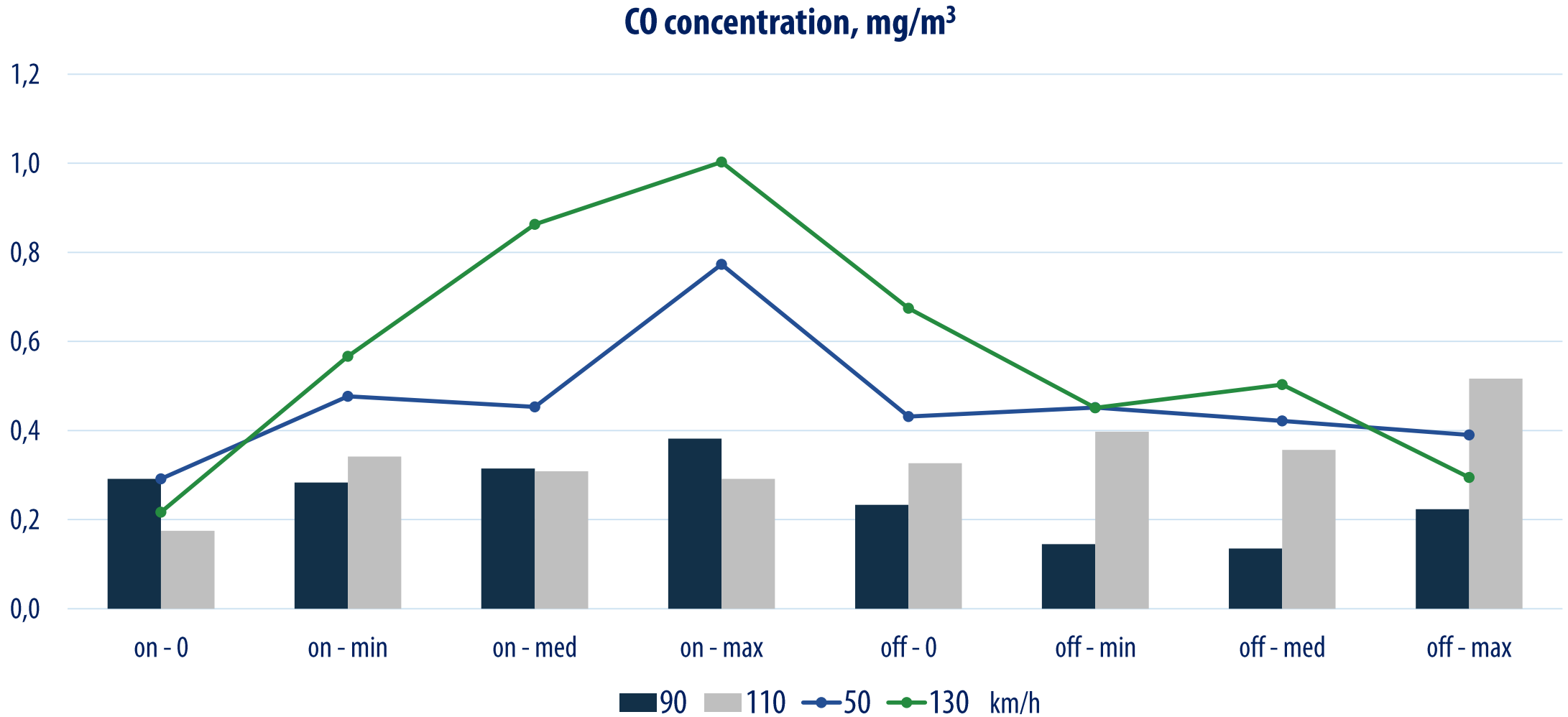


Constant speed test and HVAC modes

Andrey KOZLOV



Analysis of constant speed test date (gasoline vehicles)

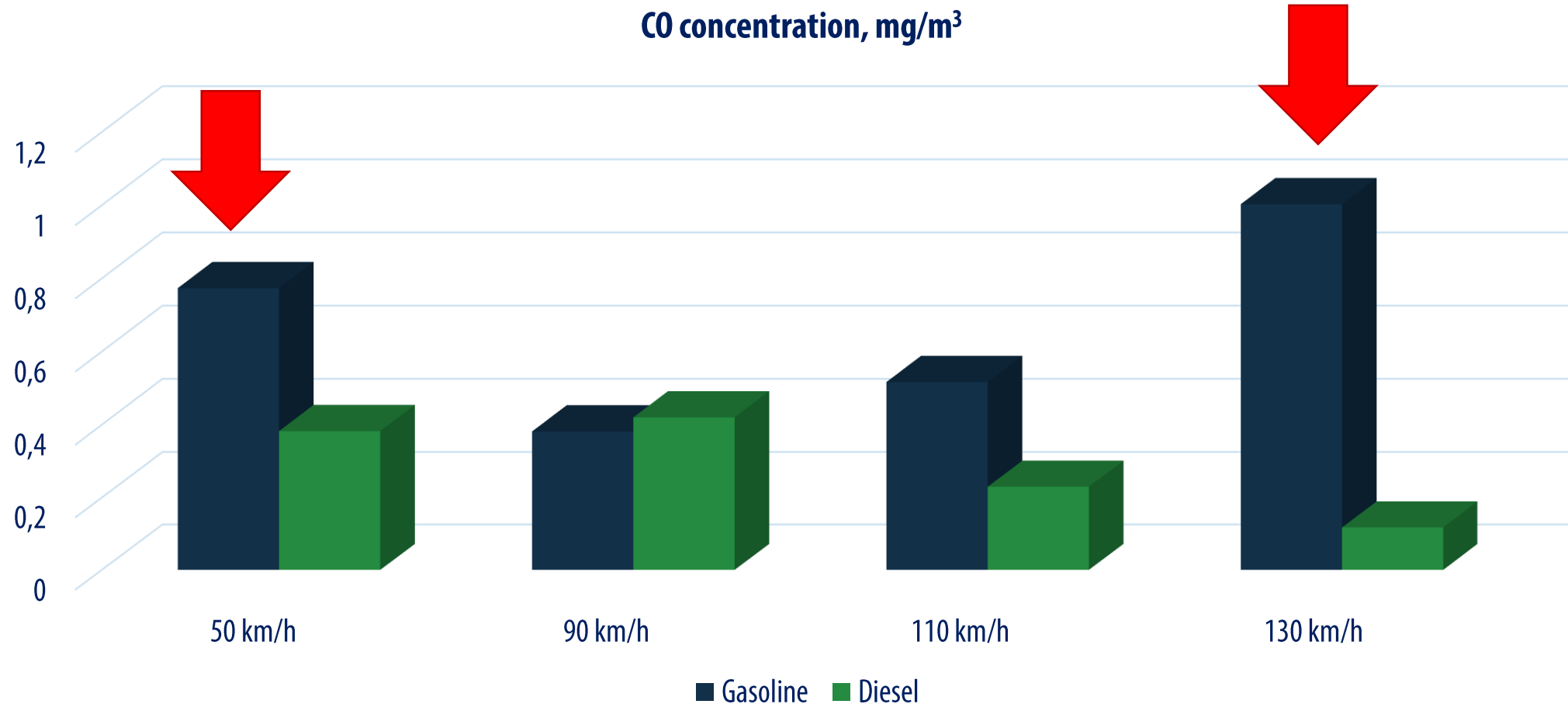


Air fan mode: 0-off., min, med, max
Recirculation mode: on, off

see VIAQ-10-07 and VIAQ-10-08 for details



Analysis of constant speed test date (CO concentration)

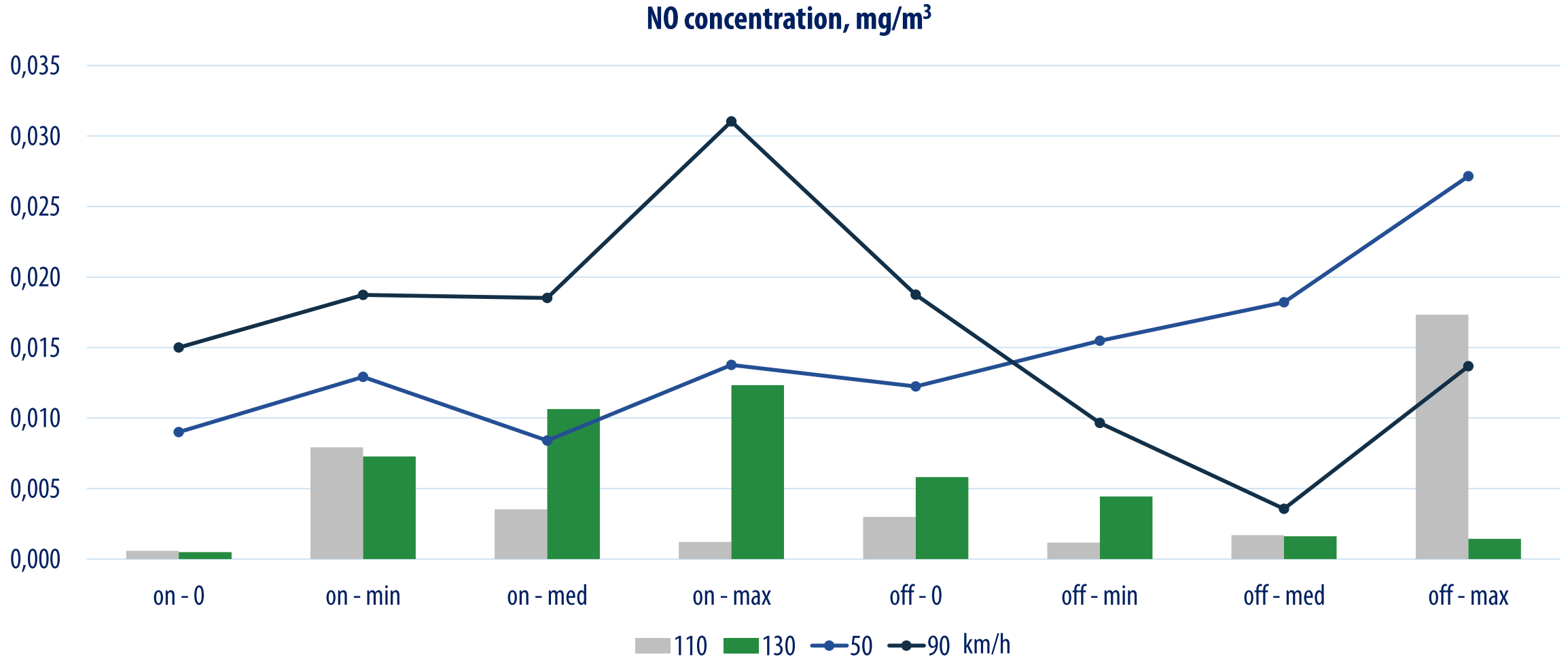


Air fan mode: 0-off., min, med, max
Recirculation mode: on, off

see VIAQ-10-07 and VIAQ-10-08 for details



Analysis of constant speed test date (gasoline vehicles)



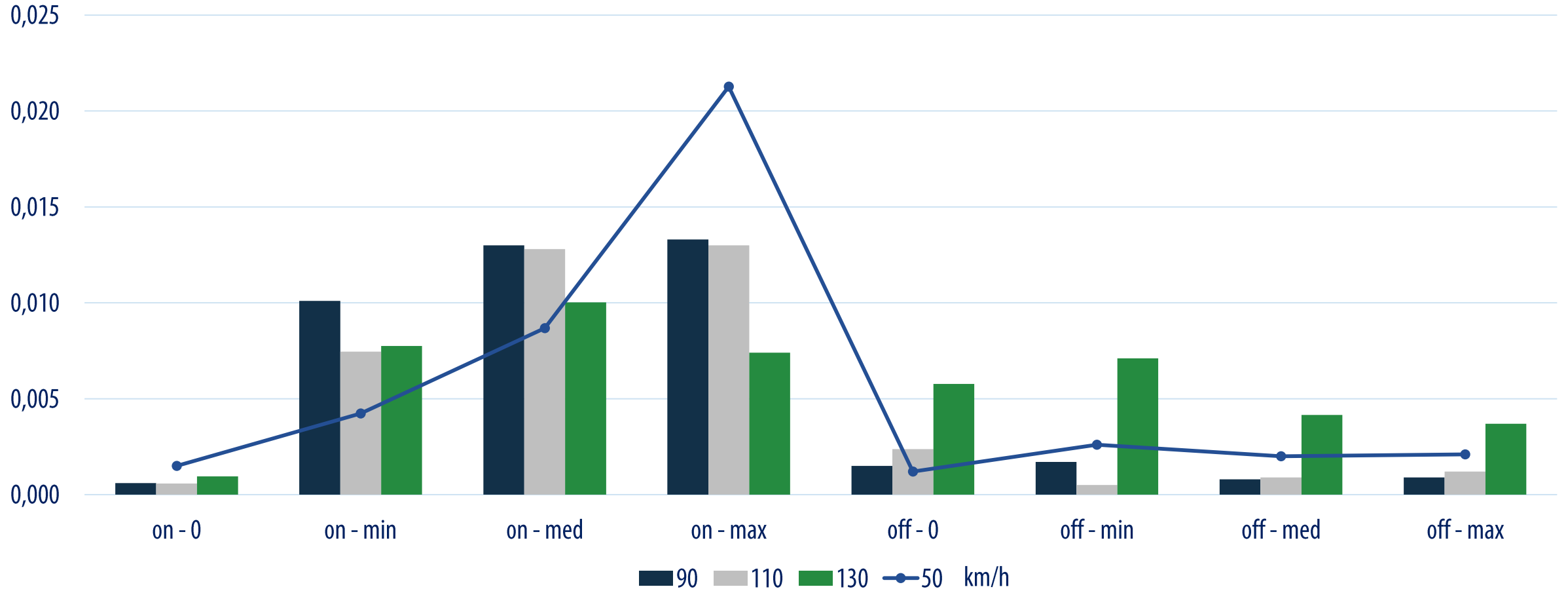
Air fan mode: 0-off, min, med, max
Recirculation mode: on, off

see VIAQ-10-07 and VIAQ-10-08 for details



Analysis of constant speed test date (diesel vehicles)

NO concentration, mg/m³

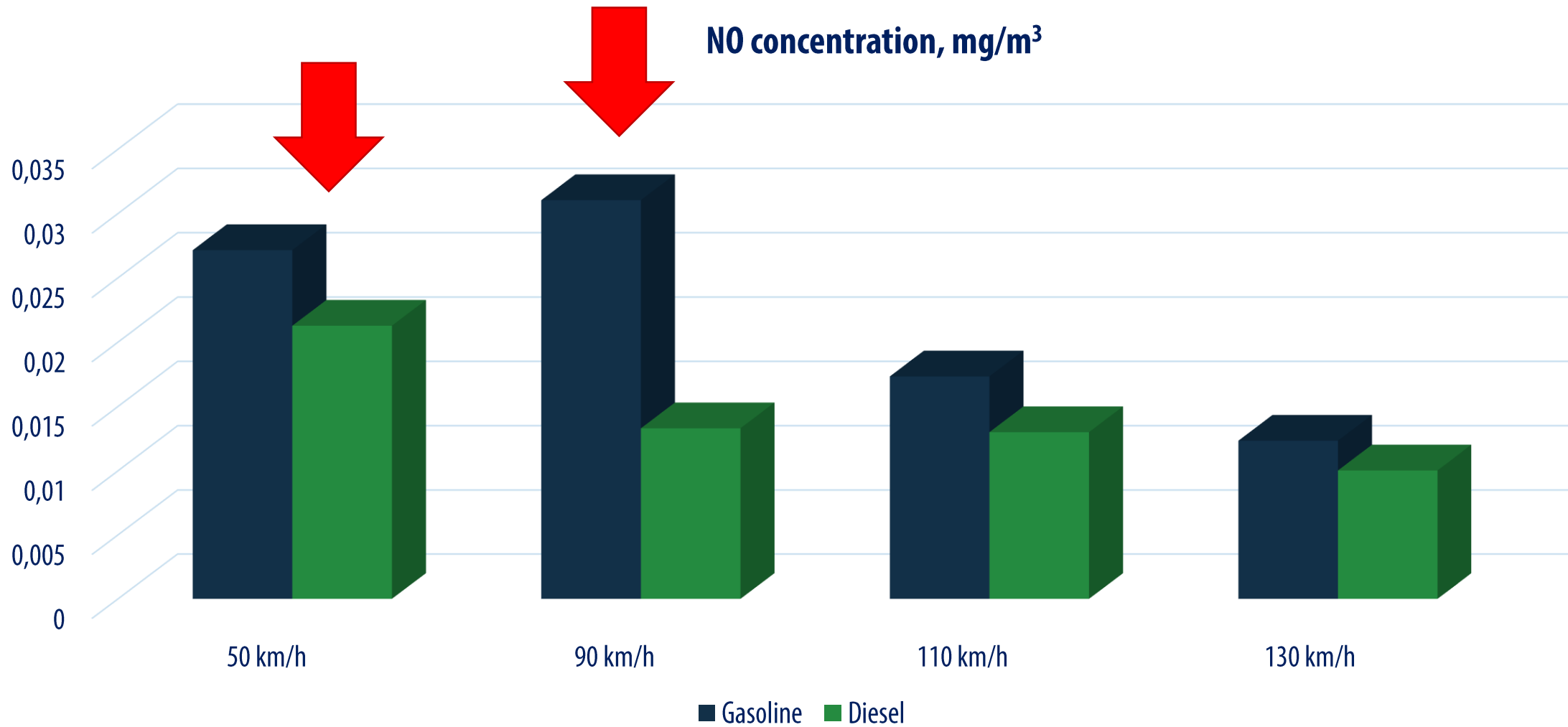


Air fan mode: 0-off, min, med, max
Recirculation mode: on, off

see VIAQ-10-07 and VIAQ-10-08 for details



Analysis of constant speed test date (NO concentration)



Air fan mode: 0-off., min, med, max
Recirculation mode: on, off

see VIAQ-10-07 and VIAQ-10-08 for details



Proposals for constant speed test

1. Speed modes:

- ✓ 50 km/h (city traffic)
- ✓ 90 km/h (suburban)
- ✓ 130 km/h (highway)

2. HVAC mode:

- ✓ recirculation is ON
- ✓ ventilator speed is MAXIMAL

Thank you for your attention!

