

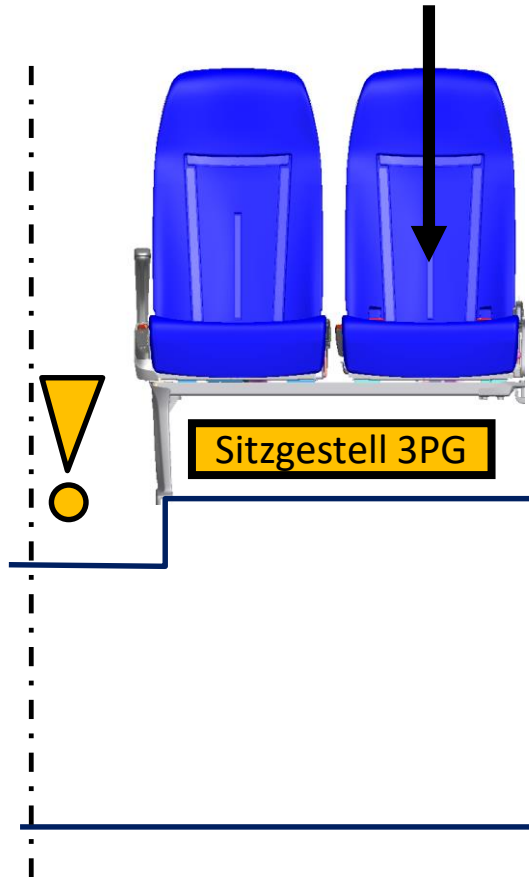
# DAIMLER

ISOFIX INFO für NCS  
Position Isofixsitz im Fzg  
Position Toptether  
Sitzabstände



# Position Isofixsitze NCS im Fzg

Sitzplatz mit Isofix muß immer **wandseitig sein**. Andere Konfigurationen sind nicht homologiert.



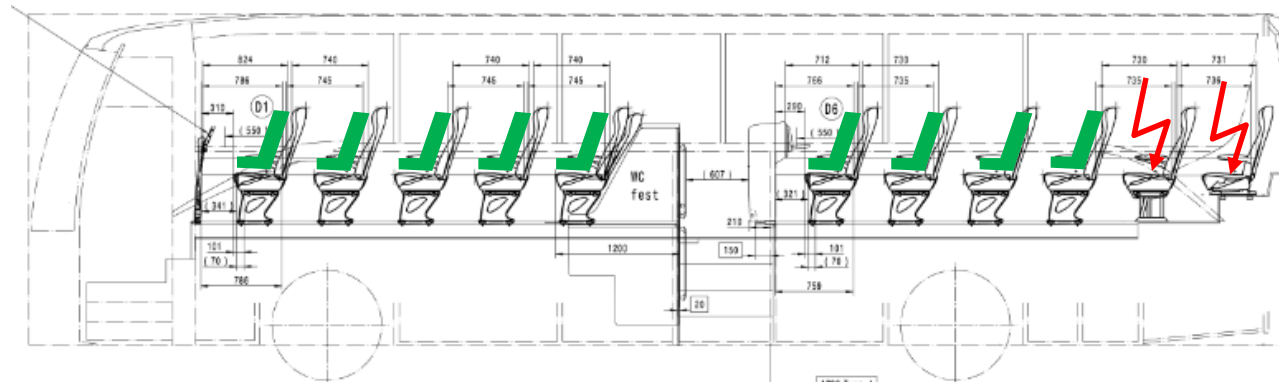
Alle **Sitzreihen** mit geklemmten standard 3PG Sitzgestell sind aktuell zugelassen, unter Einhaltung der Sitzabstände siehe Folien 5 u 7. Isofix Rückenlehne ist 2PG u 3PG fähig.

Fahrzeug kann komplett mit 2PG oder 3PG gebaut werden.

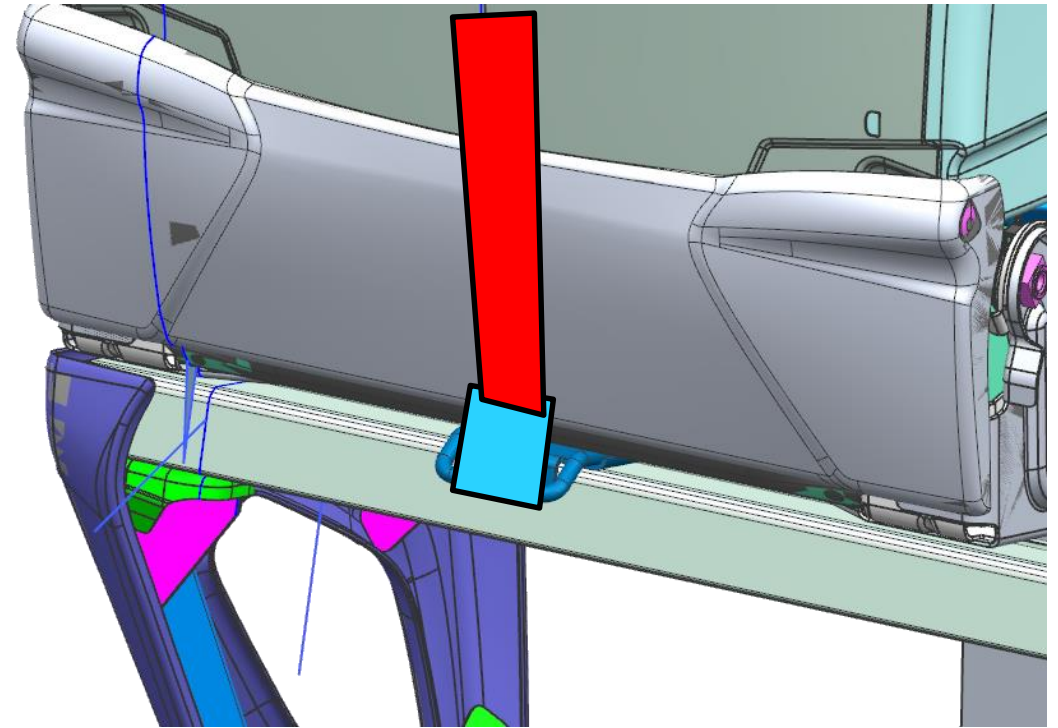
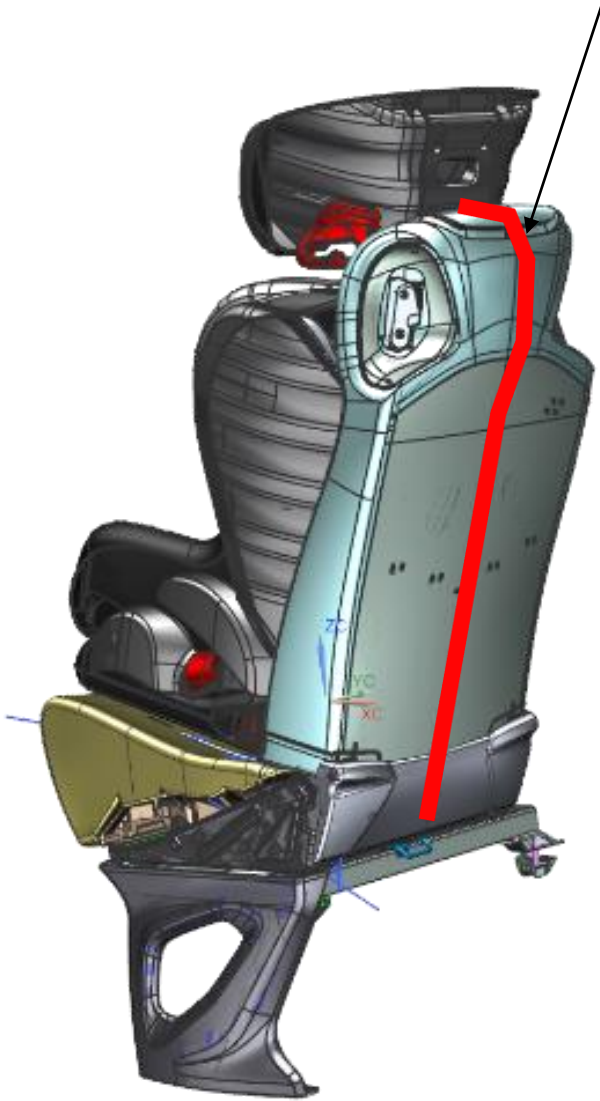
Isofix bei :

- Fond
- Vorfond
- erhöhtes Sitzgestell
- versetzte Bestuhlung
- Kinostuhl

ist **nicht freigegeben** und muß bei Bedarf mit TÜV abgestimmt und in Homologation aufgenommen werden.



# Position Toptether Anbindung am Stuhl

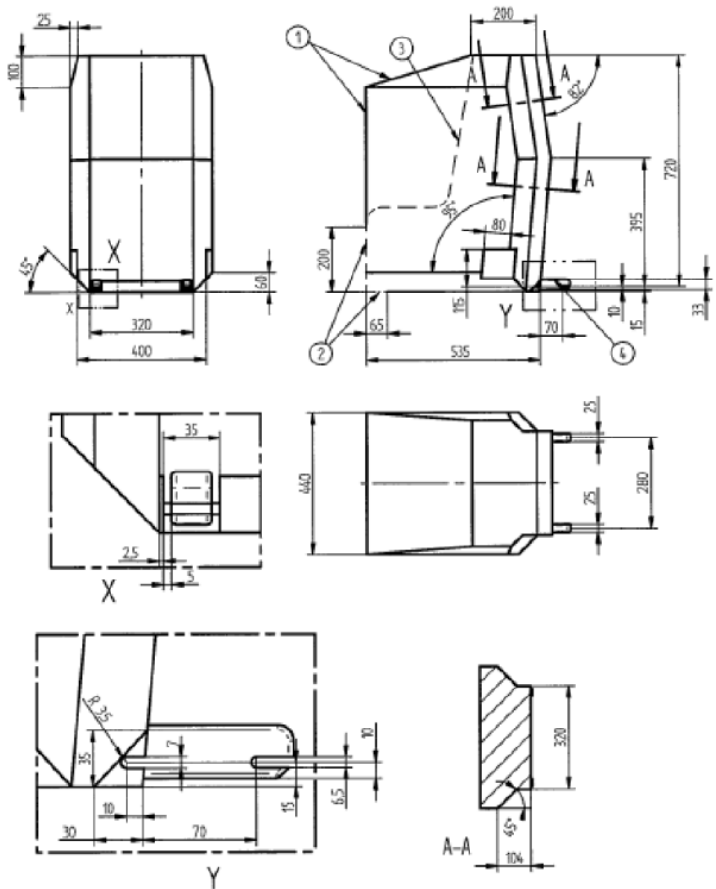


Top Tether ist ein zusätzlicher Haltegurt, der an vorwärtsgerichteten (!) Kindersitzen mit Isofix-Vorrichtung angebracht ist. Der Top Tether begrenzt die Rotationsbewegung des Kindersitzes im Falle eines Frontalunfalls.

# Vorgaben Platzbedarf für nach vorne gerichtet Kindersitze nach ECE-R 16/07 Annex17

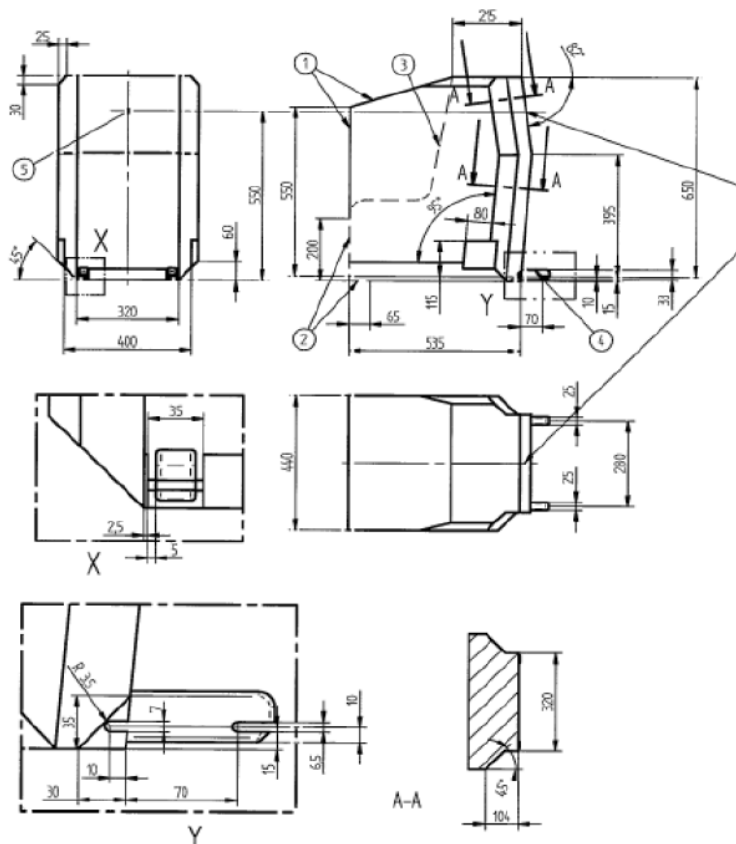
## 4.1. Full-height forward-facing toddler child restraint systems envelope

Figure 1  
ISO/F3 envelope dimensions for a full-height forward-facing toddler CRS  
(height 720 mm) **ISOFIX SIZE CLASS A**



## 4.2. Reduced-height forward-facing toddler child restraint systems envelope

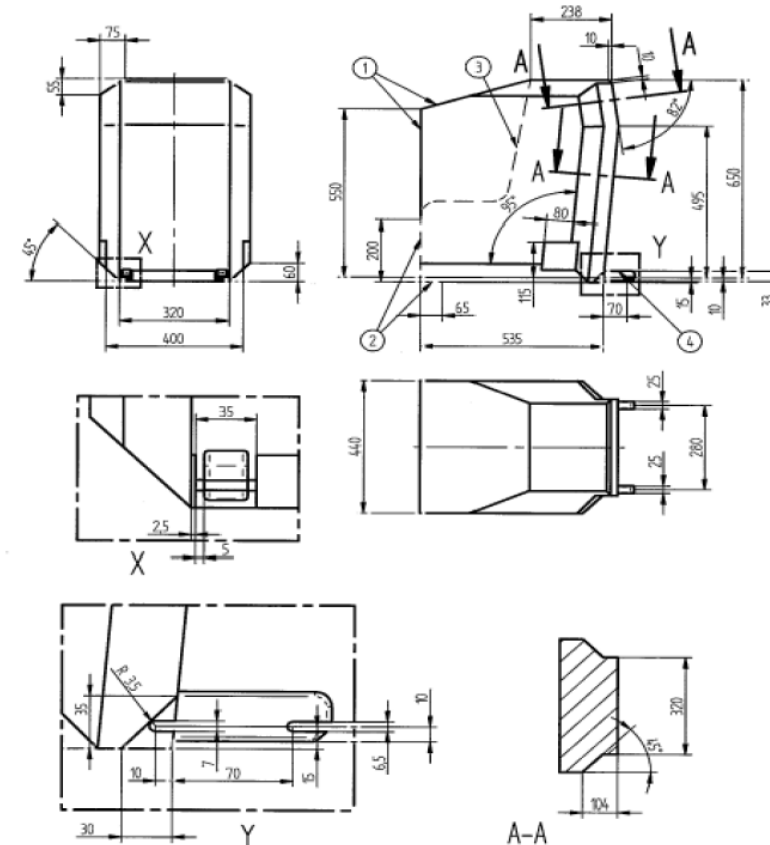
Figure 2  
ISO/F2 envelope dimensions for a reduced-height forward-facing  
CRS, (height 650 mm) - **ISOFIX SIZE CLASS B**



- Key
- 1 Limits in the forward and upwards directions
  - 2 Dashed line marks area where a support leg, or similar, of a specific vehicle CRS is protrude.
  - 3 N/A
  - 4 Further specifications of the connector area are given in Regulation No. 44
  - 5 Attachment point for the top tether strap.

## 4.3. Reduced-height second version back shape forward-facing toddler child restraint systems envelope

Figure 3  
ISO/F2X envelope dimensions for a reduced-height second version back surface shape forward-facing toddler CRS, (height 650 mm) - **ISOFIX SIZE CLASS B1**



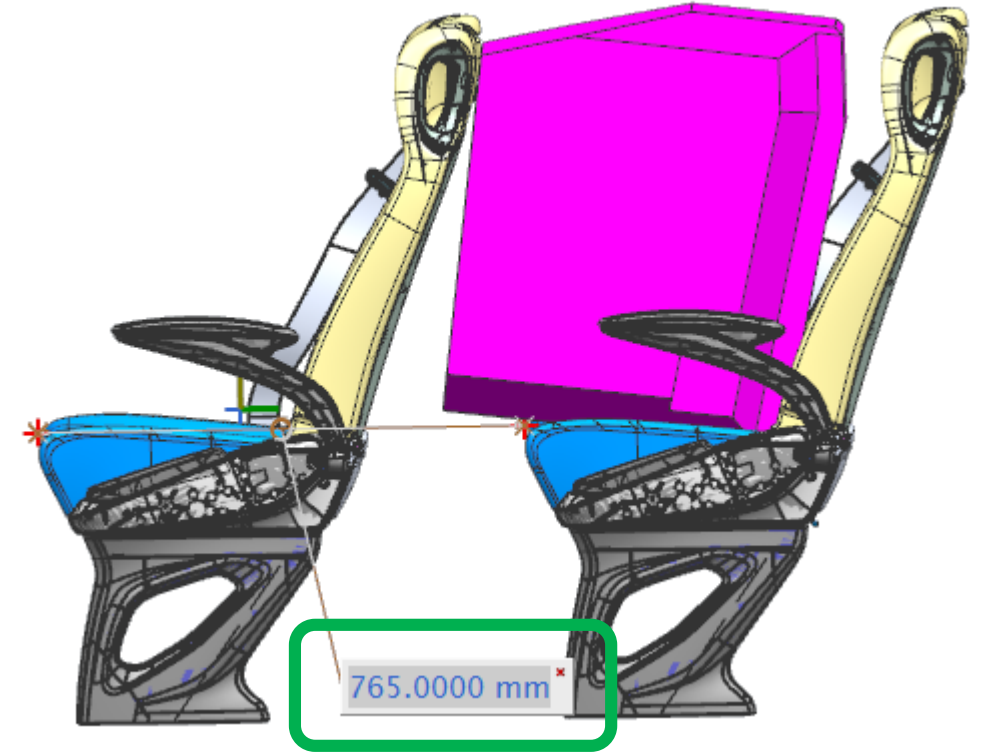
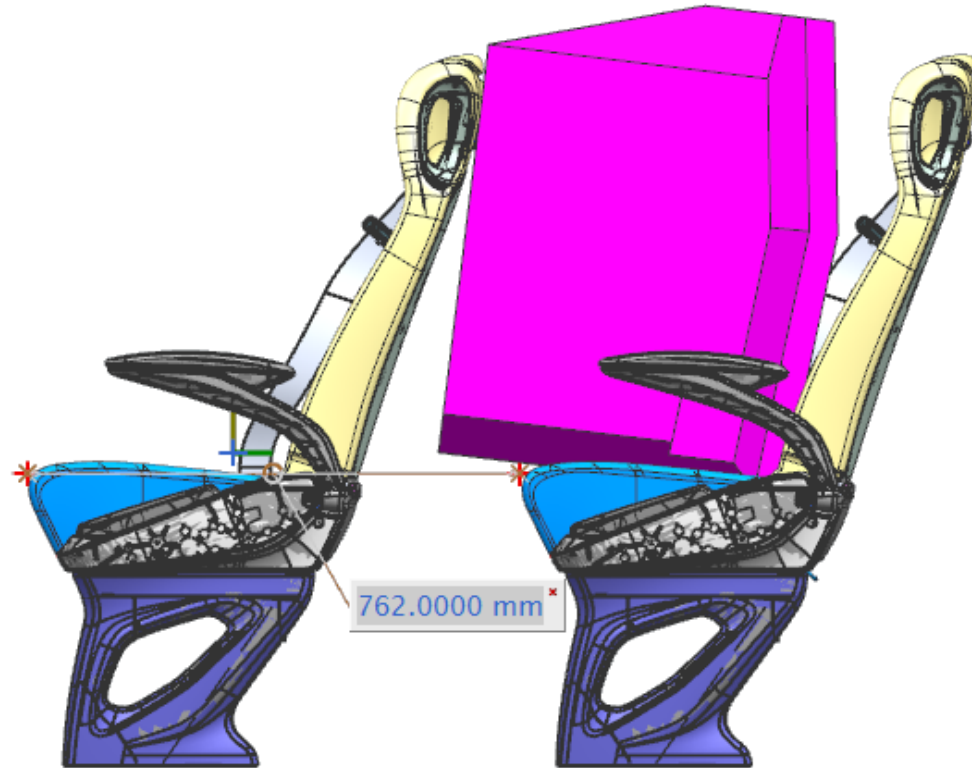
- Key
- 1 Limits in the forward and upwards directions
  - 2 Dashed line marks area where a support leg, or similar, of a specific vehicle CRS is allowed to protrude.
  - 3 N/A
  - 4 Further specifications of the connector area are given in Regulation No. 44.

- Key
- 1 Limits in the forward and upwards directions
  - 2 Dashed line marks area where a support leg, or similar, of a specific vehicle CRS is allowed to protrude.
  - 3 N/A
  - 4 Further specifications of the connector area are given in Regulation No. 44

# Untersuchung Sitzabstände für nach vorne gerichtet Kindersitze nach ECE-R 16/07 Annex17

HFL221860S000\_CRF-PRUEFKOERPER ISO/F3\_A

HFL221860S000\_CRF-Pruefkoerper B1 ISO\_F2X



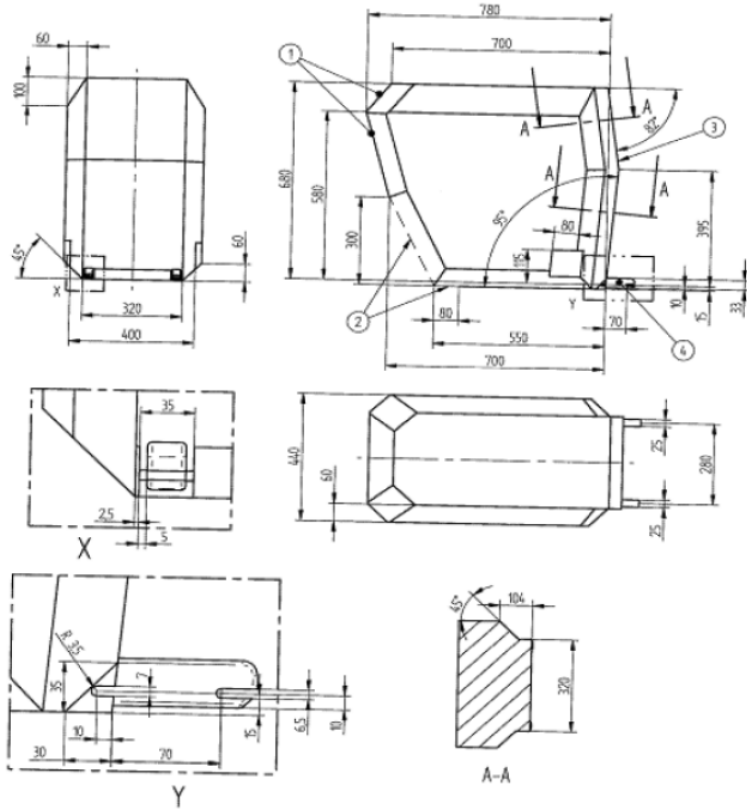
	Aufpolsterung <b>Route</b>	Aufpolsterung <b>Voyage Plus</b>	Aufpolsterung <b>Ambassador</b>
<b>Sitzabstand</b>	<b>770</b>	<b>790</b>	<b>800</b>

Basis für Untersuchung ist die extra dünne Rückenlehne

# Vorgaben Platzbedarf für nach hinten gerichtet Kindersitze nach ECE-R 16/07 Annex17

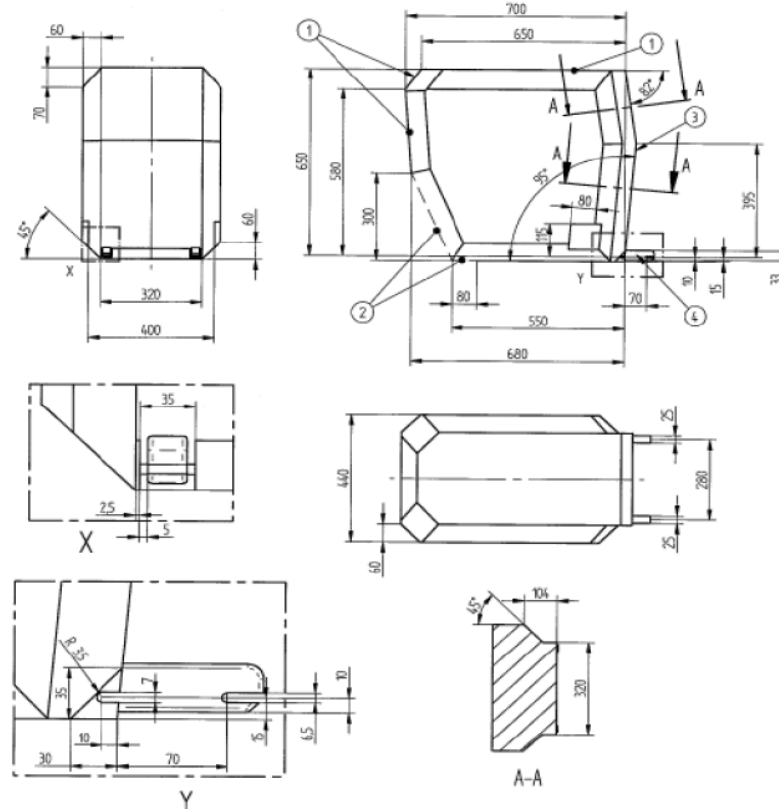
4.4. Full-size rearward facing toddler child restraint system envelope

Figure 4  
ISO/R3 envelope dimensions for a full-size rearward-facing toddler CRS **ISO**  
**FIX SIZE CLASS C**



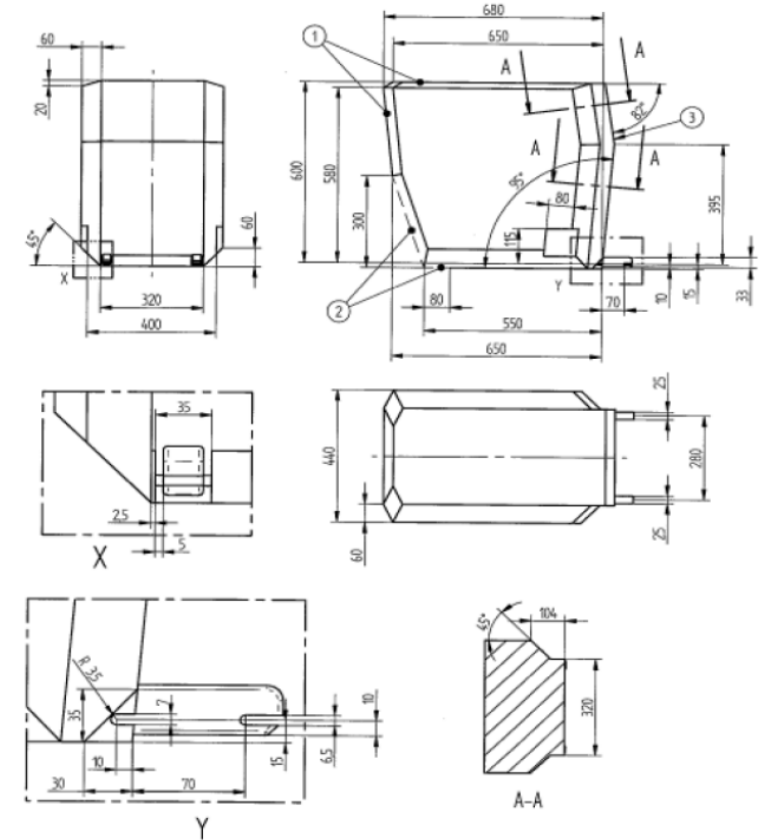
4.5. Reduced-size rearward-facing toddler child restraint systems envelope

Figure 5  
ISO/R2 envelope dimensions for a reduced-size rearward-facing toddler CRS **ISOFIX**  
**SIZE CLASS D**



4.6. Rearward facing infant child restraint systems envelope

Figure 6  
ISO/R1 envelope dimensions for an infant-size rearward-facing CRS **ISOFIX**  
**SIZE CLASS E**



- Key**
- 1 Limits in the rearward and upwards directions
  - 2 Dashed line marks area where a support leg, or similar, of a specific vehicle CRS is allowed to protrude.
  - 3 The backwards limitation (to the right in the figure) is given by the forward-facing envelope in Figure 2
  - 4 Further specifications of the connector area are given in Regulation No. 44.

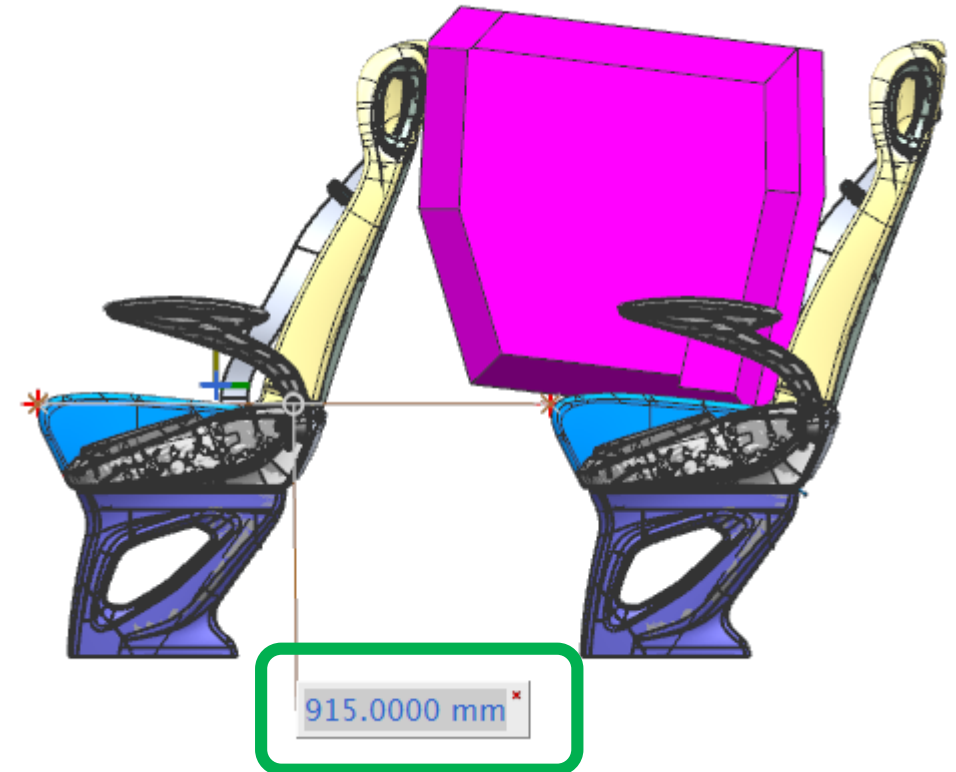
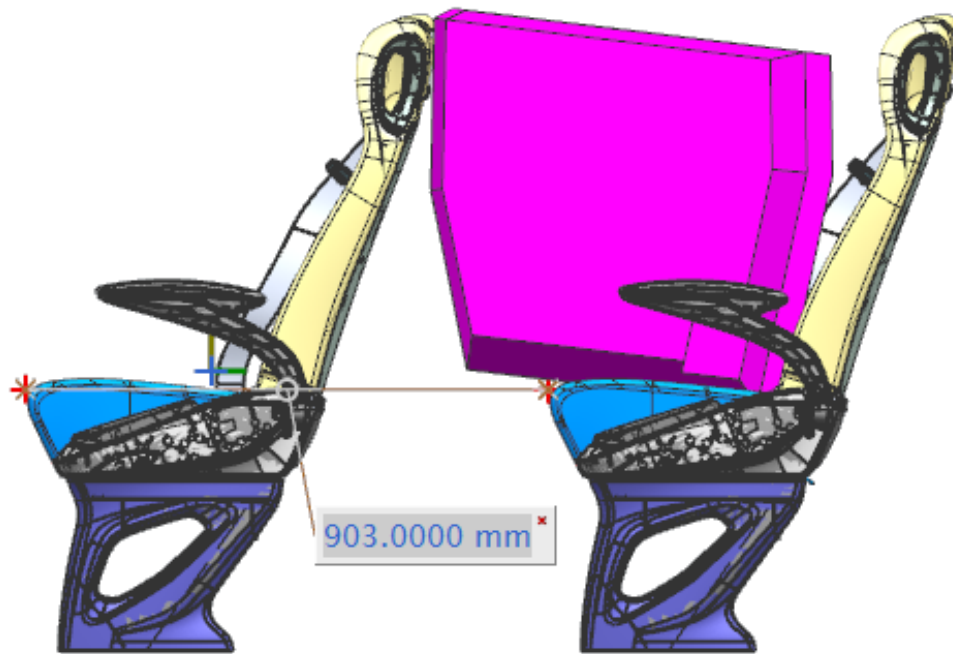
- Key**
- 1 Limits in the rearward and upwards directions
  - 2 Dashed line marks area where a support leg, or similar, of a specific vehicle CRS is allowed to protrude.
  - 3 The backwards limitation (to the right in the figure) is given by the forward-facing envelope in Figure 2
  - 4 Further specifications of the connector area are given in Regulation No. 44.

- Key**
- 1 Limits in the rearward and upwards directions
  - 2 Dashed line marks area where a support leg, or similar, of a specific vehicle CRS is allowed to protrude.
  - 3 The backwards limitation (to the right in the figure) is given by the forward-facing envelope in Figure 2
  - 4 Further specifications of the connector area are given in Regulation No. 44.

# Untersuchung Sitzabstände für nach hinten gerichtet Kindersitze nach ECE-R 16/07 Annex17

HFL221860S000\_CRF-PRUEFKOERPER ISO/R1\_E

HFL221860S000\_CRF-PRUEFKOERPER ISO/R2\_D



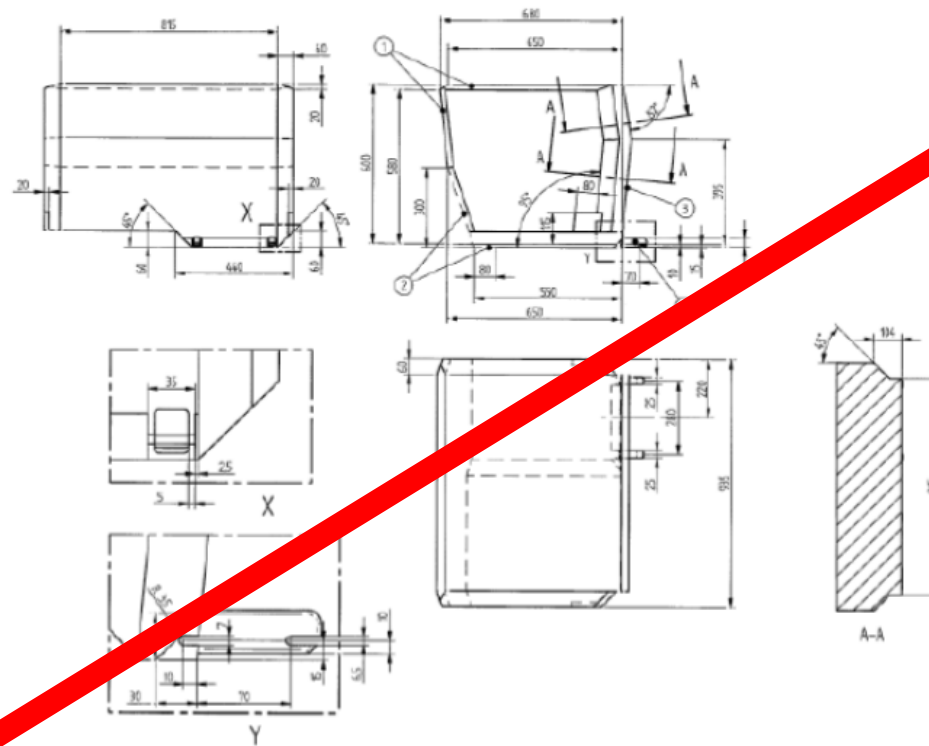
	Aufpolsterung <b>Route</b>	Aufpolsterung <b>Voyage Plus</b>	Aufpolsterung <b>Ambassador</b>
<b>Sitzabstand</b>	<b>920</b>	<b>940</b>	<b>950</b>

Basis für Untersuchung ist die extra dünne Rückenlehne

## Seitlich gerichtete Isofix Kindersitze Sitze

### 4.7. Lateral facing child restraint systems envelope

Figure 7  
Envelope dimensions for lateral facing position CRS – ISO/L1- **ISOFIX SIZE CLASS F** or symmetrically opposite – ISO/L2 – **ISOFIX CLASS G**



- Key
- 1 Limits in the rearward and upwards directions
  - 2 Dashed line marks area where a support leg, or similar, of a specific vehicle CRS is allowed to protrude.
  - 3 The backwards limitation (to the right in the figure) is given by the forward-facing envelope in the figure.

Evobus gibt keine Freigabe für Kindersitze die quer zur Fahrtrichtung sind.